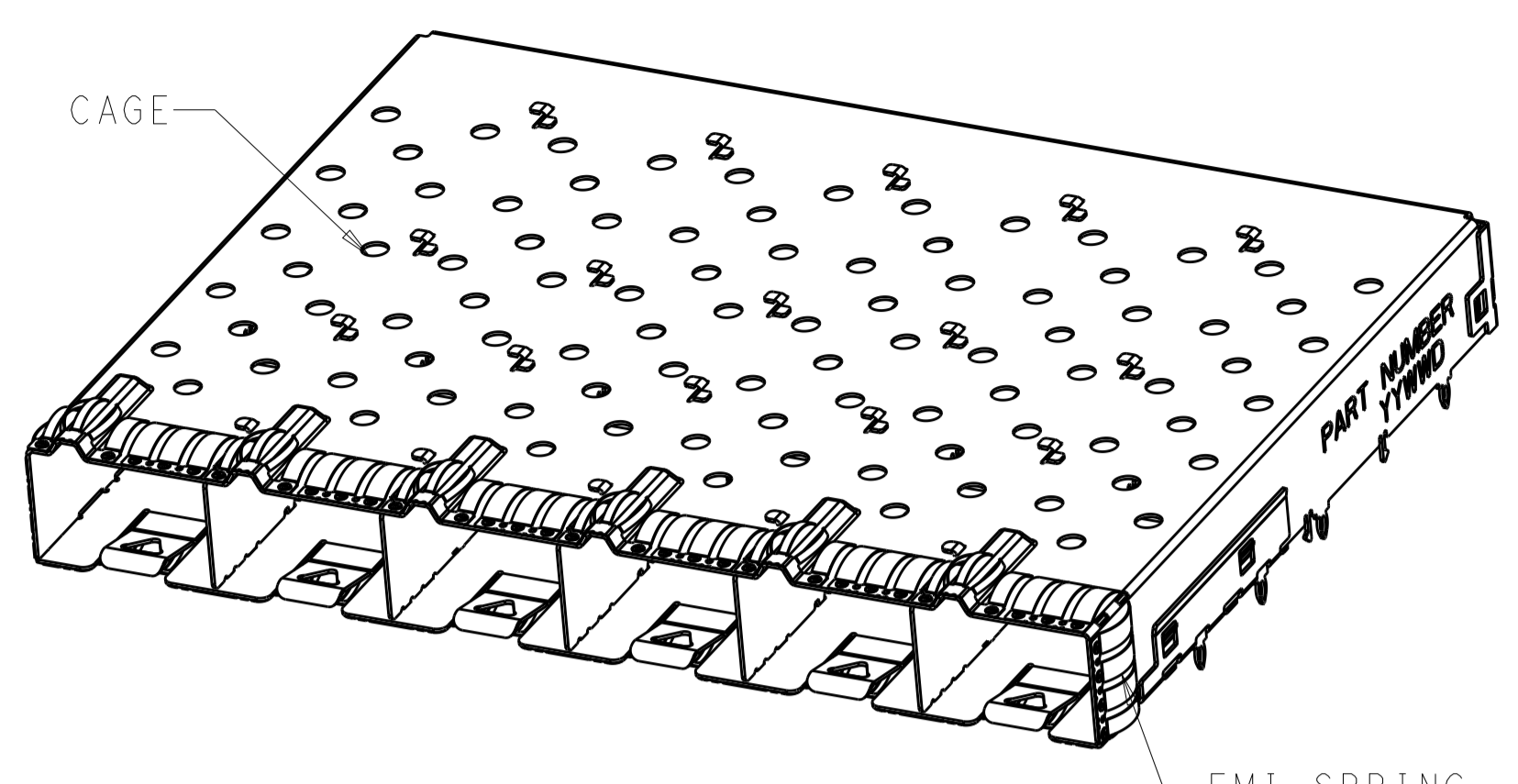
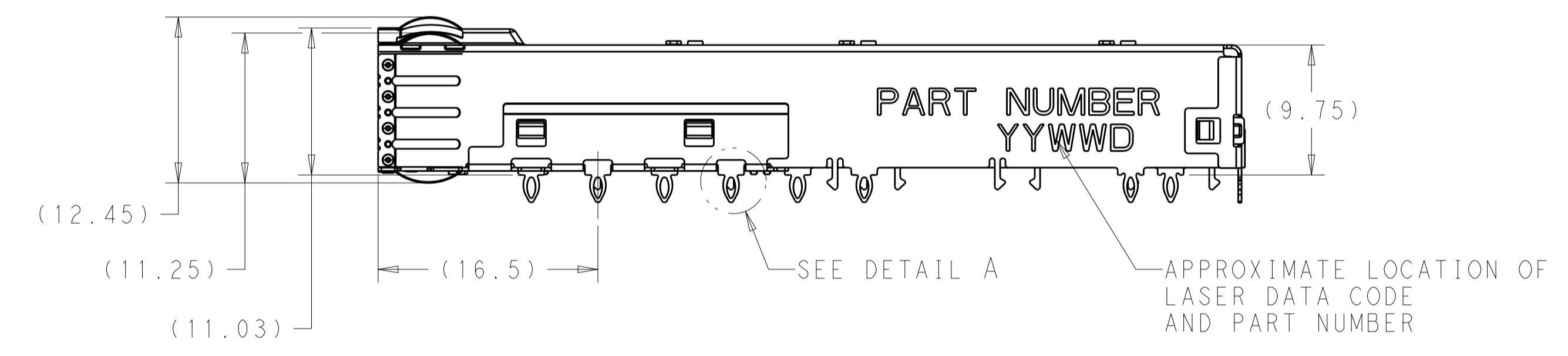
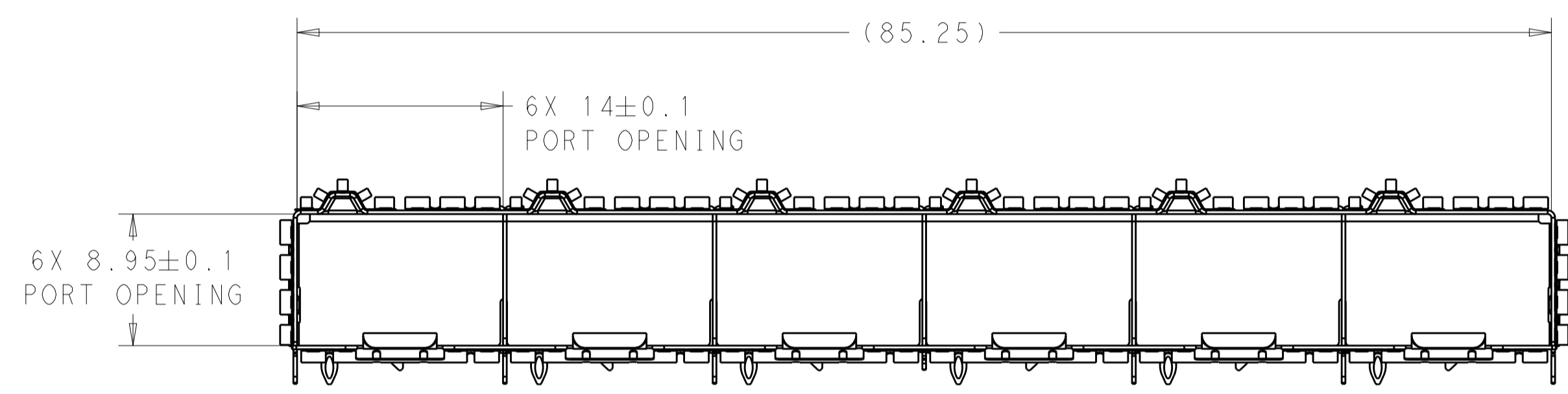


REVISIONS				
P	LTN	DESCRIPTION	DATE	APVD
A		INITIAL RELEASE	24SEP2020	AJ SH

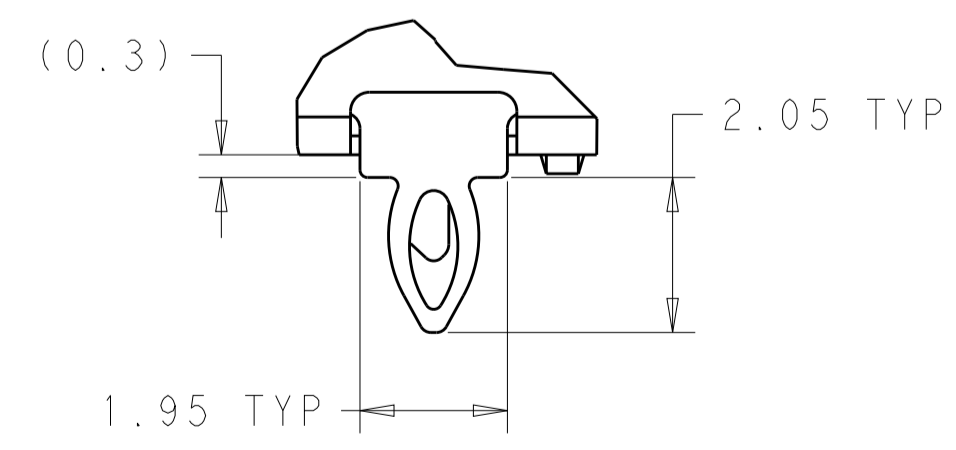
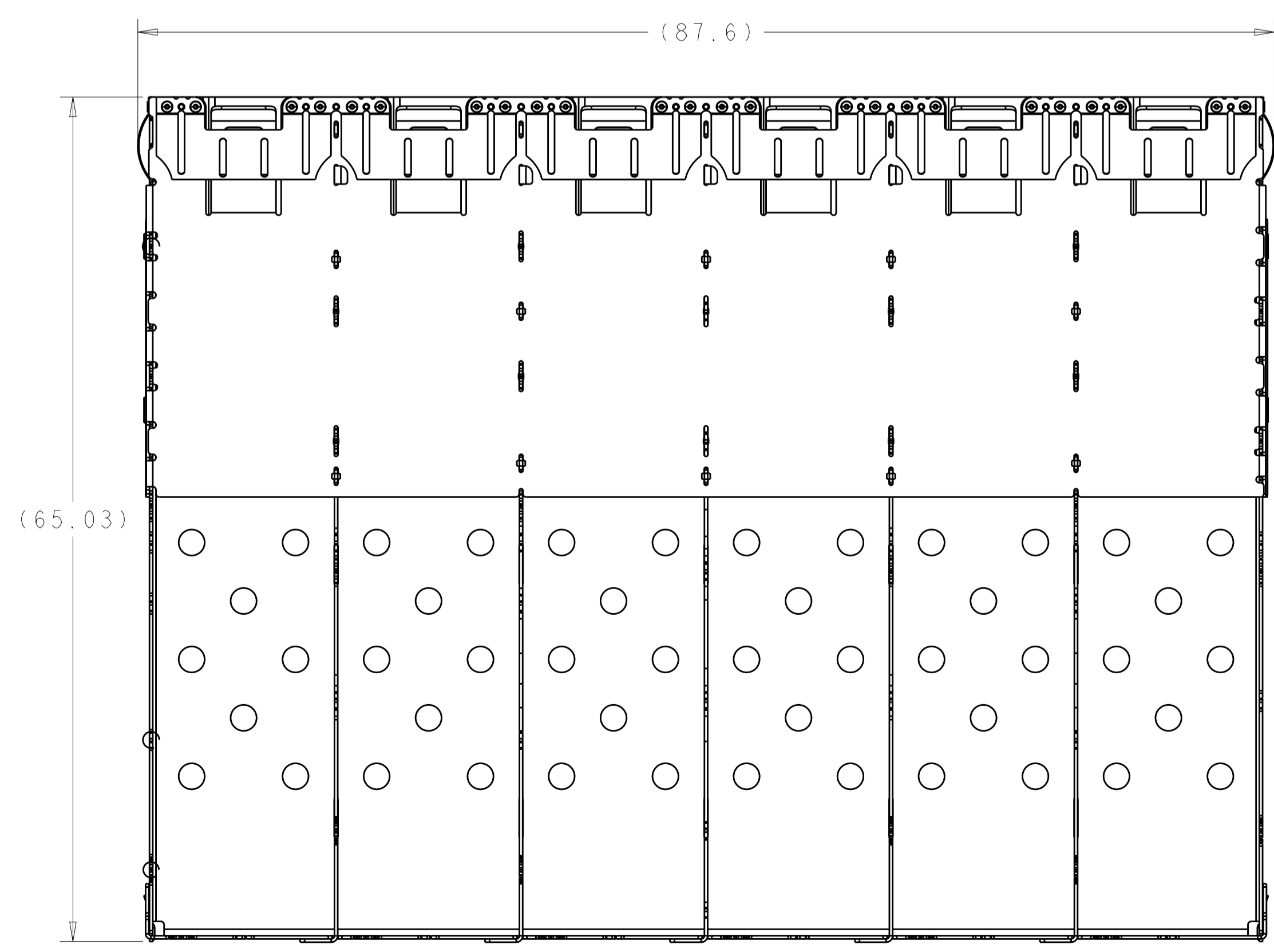


2345214-1  
FINISHED ASSEMBLY  
SCALE 2:1

- CAGE: 0.25mm THICK STAINLESS STEEL  
EMI SPRINGS: COPPER ALLOY
- FINISH:  
SPRINGS: 0.8um NICKEL. NON-PLATED EDGES PERMISSIBLE.
- MATES WITH SFP-DD MSA COMPLIANT TRANSCEIVERS.
- INTERPRETATION OF DATUM REFERENCE FRAME IN ACCORDANCE WITH SECT 4.4.1.1 OF ASME Y14.5M-1994.
- MINIMUM PC BOARD THICKNESS:  
SINGLE SIDED = 1.57mm  
DOUBLE SIDED = 2.20mm
- DATUM AND BASIC DIMENSION ESTABLISHED BY CUSTOMER.
- REFERENCE APPLICATION SPEC. 114-60027, HOLE A, FOR RECOMMENDED DRILL HOLE DIAMETER AND PLATING THICKNESS.
- REFERENCE APPLICATION SPEC. 114-60027, HOLE B, FOR RECOMMENDED DRILL HOLE DIAMETER AND PLATING THICKNESS.
- HOLE PATTERN REPEATS FOR EACH PORT. SPACING BETWEEN PORTS IS 14.25mm.
- DATUM -A- IS TOP SURFACE OF THE HOST BOARD.



SCALE 3:1

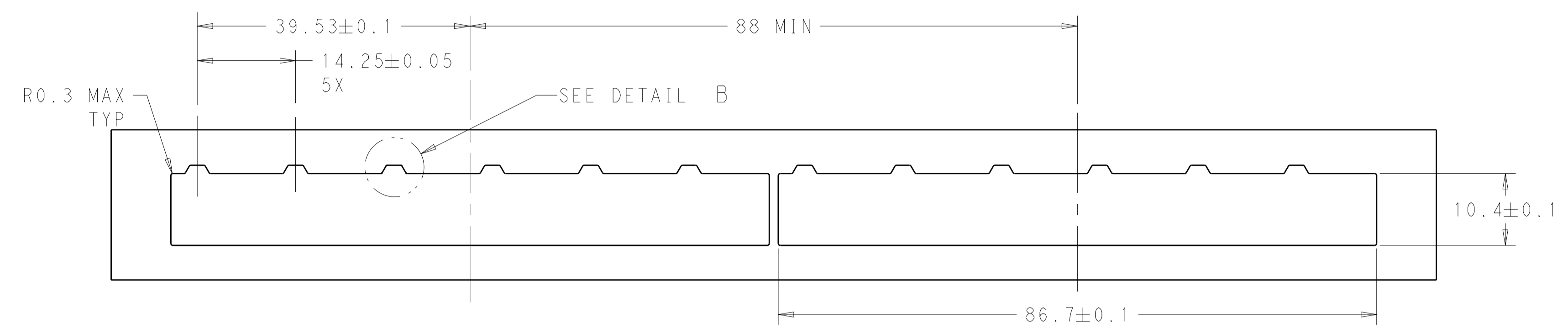


DETAIL A  
SCALE 10:1

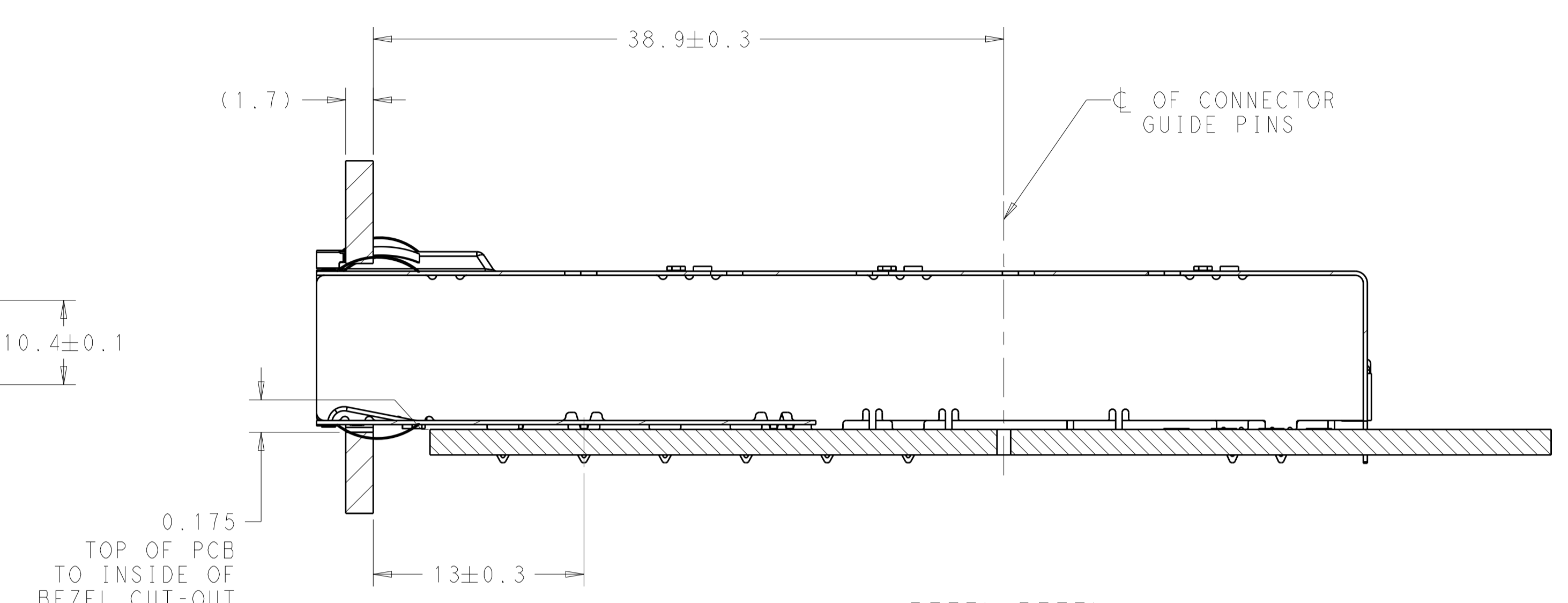
2	NO	2345214-1
REAR PIN # PER PORT	TOP OPENING	PART NUMBER

THIS DRAWING IS A CONTROLLED DOCUMENT.		OWN: ARTHUR JIN 14NOV2019	<b>TE</b> TE Connectivity	
DIMENSIONS: mm		CHK: SEAN HAN 14NOV2019		
TOLERANCES UNLESS OTHERWISE SPECIFIED:		APVD:	NAME: SFPDD 1X6 CAGE ASSEMBLY W/ HS PRESS-FIT, EXTERNAL EMI SPRINGS	
0 PLC	±0.25	PRODUCT SPEC:	-	
1 PLC	±0.25	108-60128	-	
2 PLC	±0.20	APPLICATION SPEC:	-	
3 PLC	±0.20	114-60027	-	
4 PLC	±0.20	WEIGHT:	-	
ANGLES	±	RESTRICTED CUSTOMER	-	
FINISH	-	SCALE: 1:1	SHEET: 1 OF 5	REV: A

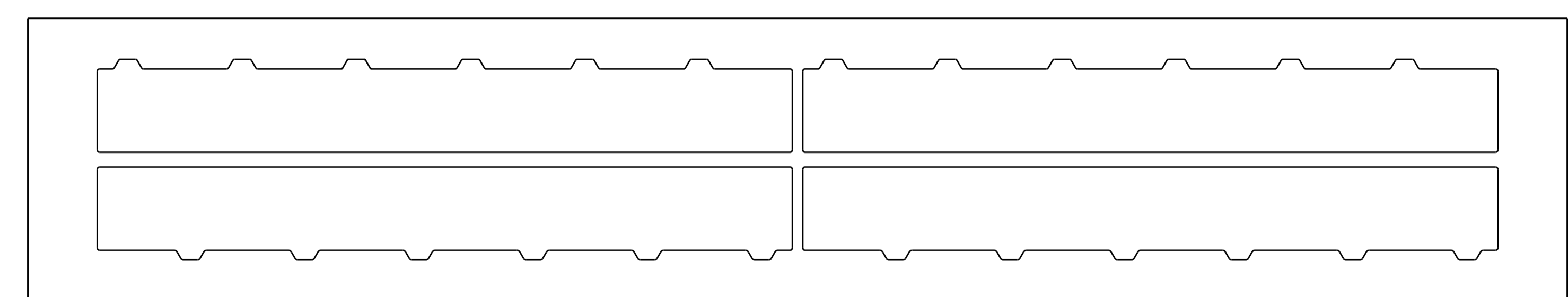
REVISIONS				
P.	LTN	DESCRIPTION	DATE	APVD
-	-	SEE SHEET 1	-	-



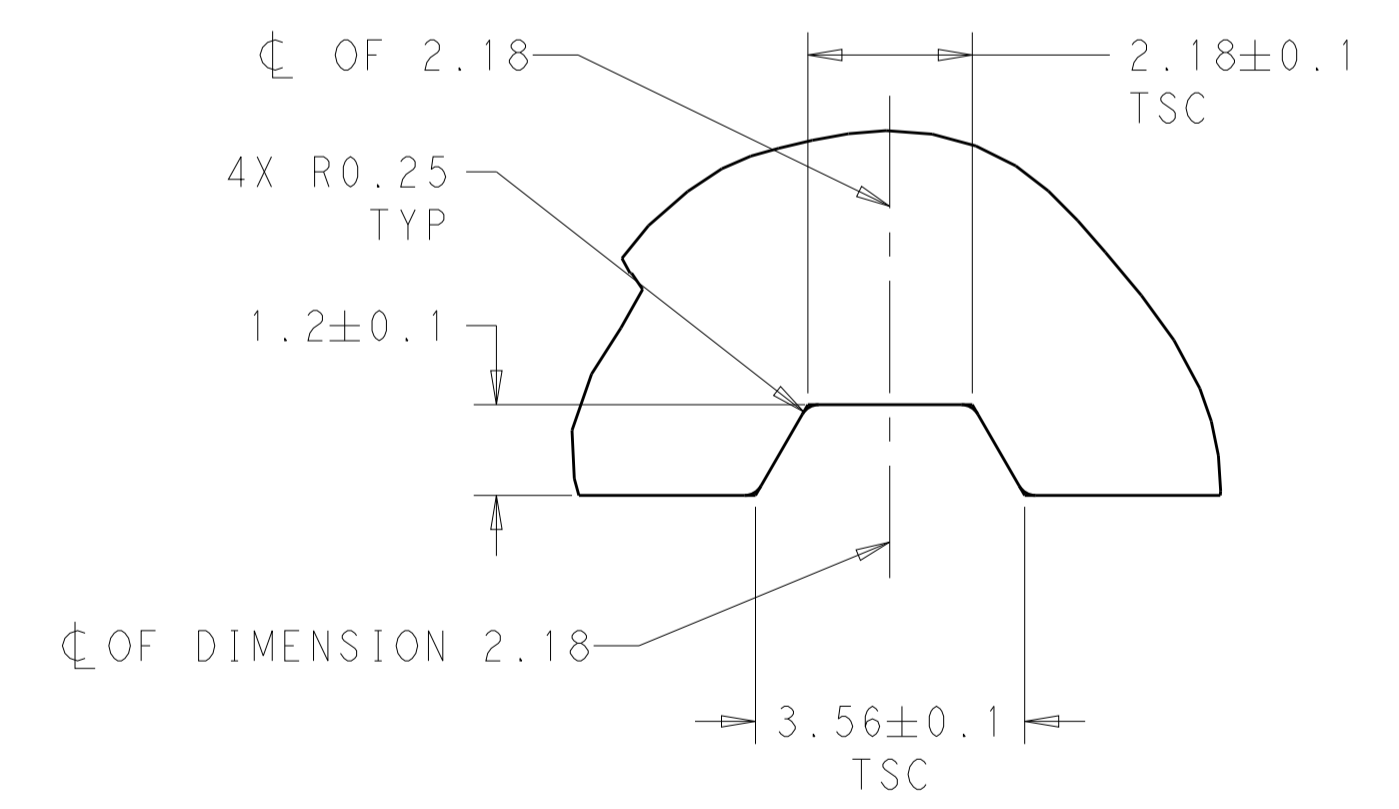
RECOMMENDED BEZEL CUT-OUT  
SINGLE SIDED APPLICATIONS  
SCALE 2:1



SECTION BEZEL-BEZEL  
SCALE 4:1



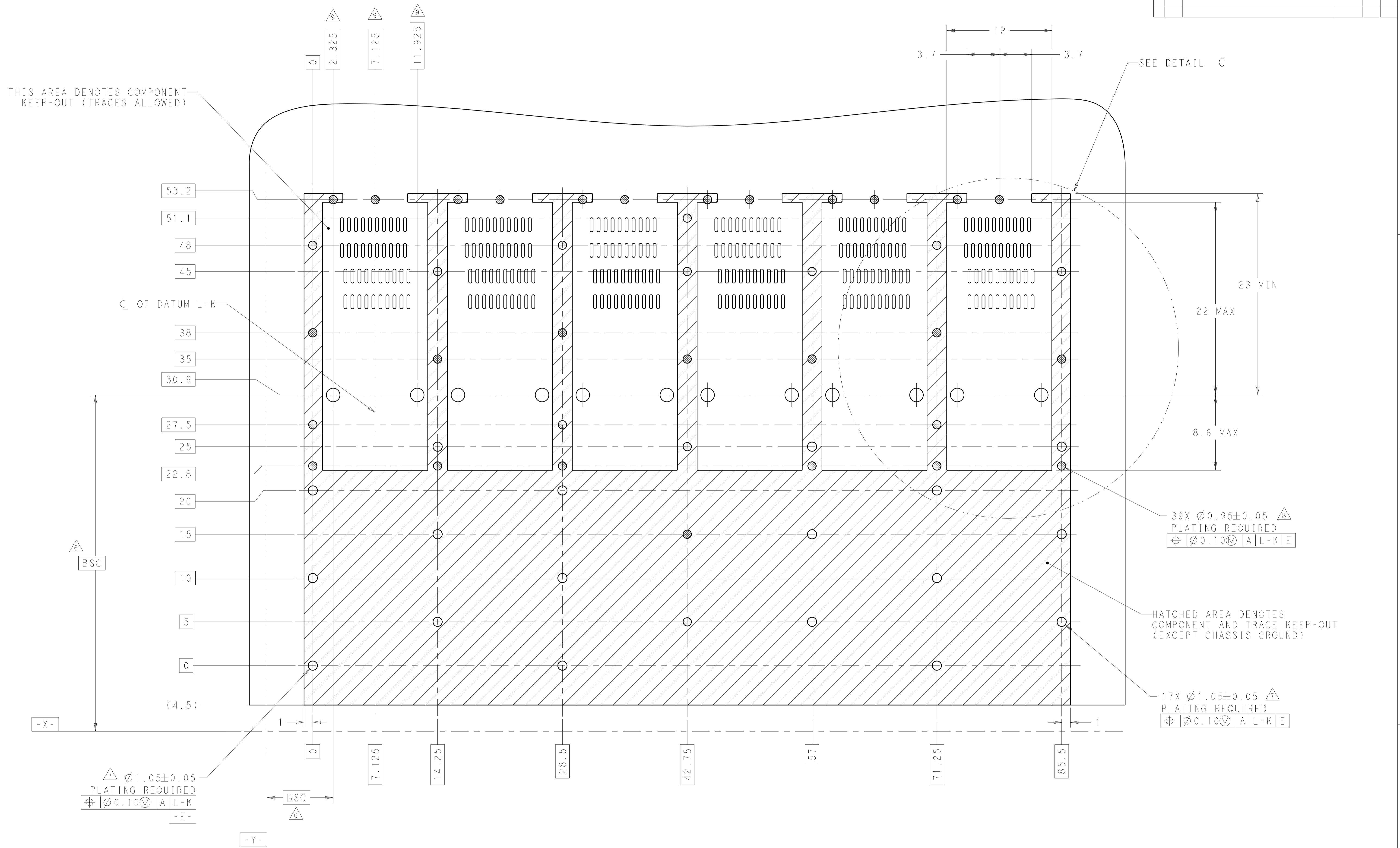
RECOMMENDED BEZEL CUT-OUT  
BELLY TO BELLY APPLICATIONS  
SCALE 2:1



DETAIL B  
SCALE 10:1

THIS DRAWING IS A CONTROLLED DOCUMENT.		OWN: ARTHUR JLN 14NOV2019	
		CHK: SEAN HAN 14NOV2019	
DIMENSIONS:	TOLERANCES UNLESS OTHERWISE SPECIFIED:	APVD:	NAME:
mm	0 PLC ±0.25	PRODUCT SPEC	SFPDD 1X6 CAGE ASSEMBLY W/ HS
	1 PLC ±0.25	108-60128	PRESS-FIT, EXTERNAL EMI SPRINGS
	2 PLC ±0.20	APPLICATION SPEC	
	3 PLC ±0.20	SIZE: CAGE CODE DRAWING NO	RESTRICTED TO
	4 PLC ±	114-60027	A   00779   C=2345214
MATERIAL:	FINISH:	WEIGHT:	SCALE 1:1 SHEET 2 OF 5 REV A
		RESTRICTED CUSTOMER	

REVISIONS				
P.	LTR.	DESCRIPTION	DATE	APVD.
-	-	SEE SHEET 1	-	-

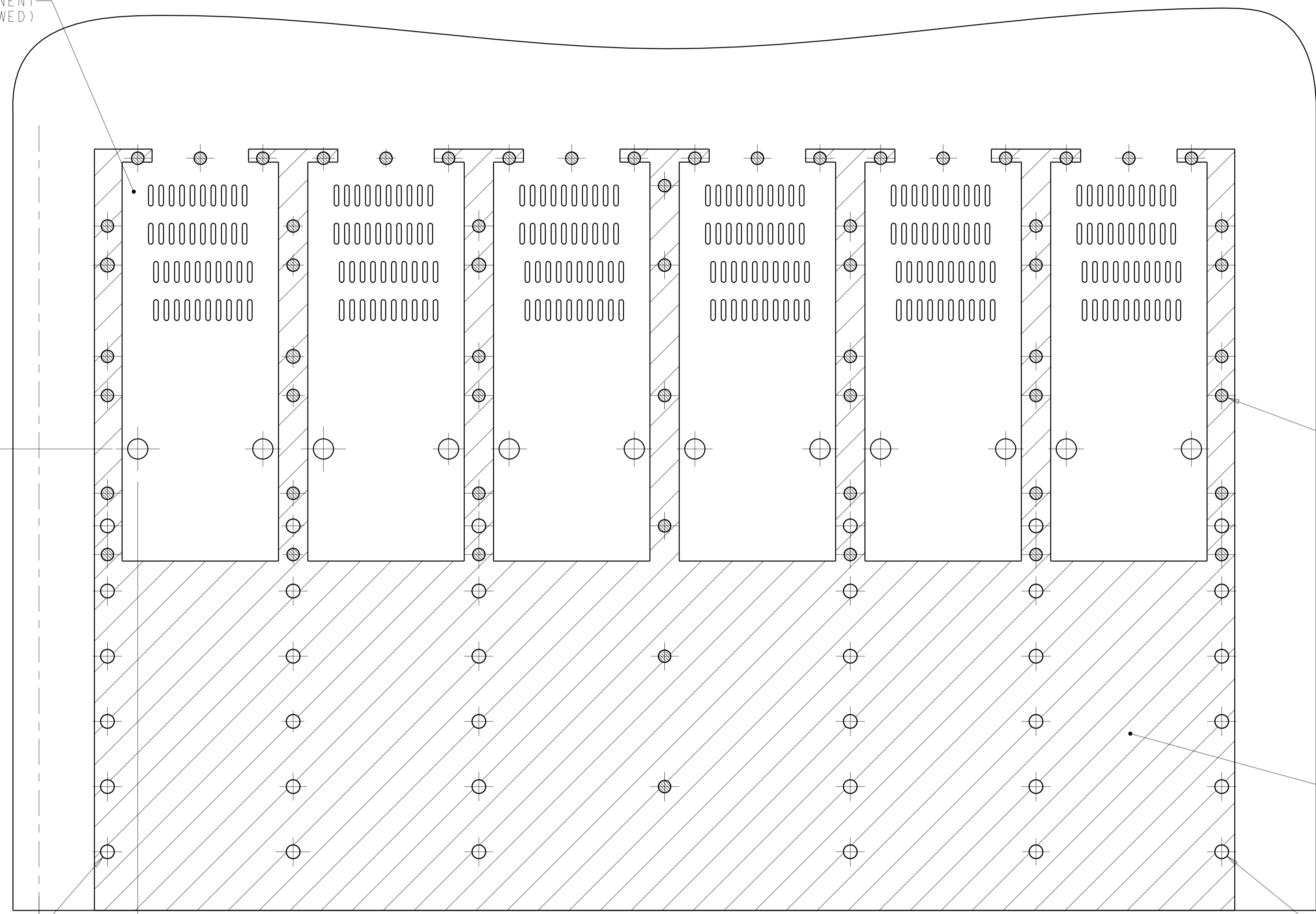


RECOMMENDED PCB CONFIGURATION  
WITH KEEP-OUT AREAS  
SINGLE SIDED APPLICATIONS  
SCALE 5:1

THIS DRAWING IS A CONTROLLED DOCUMENT.		OWN: ARTHUR JIN 14NOV2019	TE Connectivity
DIMENSIONS: mm		CHK: SEAN HAN 14NOV2019	
TOLERANCES UNLESS OTHERWISE SPECIFIED:		APVD:	NAME: SFPDD 1X6 CAGE ASSEMBLY W/ HS PRESS-FIT, EXTERNAL EMI SPRINGS
0 PLC $\pm 0.25$	1 PLC $\pm 0.25$	PRODUCT SPEC: 108-60128	SIZE: CAGE CODE DRAWING NO: A   00779   C=2345214
2 PLC $\pm 0.20$	3 PLC $\pm 0.20$	APPLICATION SPEC: 114-60027	RESTRICTED TO: CUSTOMER
4 PLC $\pm 0.20$	ANGLES: #	WEIGHT: -	SCALE: 1:1 SHEET 3 OF 5 REV A
MATERIAL: $\triangle$	FINISH: -	RESTRICTED CUSTOMER	

REVISIONS				
P.	LTN	DESCRIPTION	DATE	APVD
-	-	SEE SHEET 1	-	-

THIS AREA DENOTES COMPONENT  
KEEP-OUT (TRACES ALLOWED)



60X Ø0.95±0.05  $\triangle$   
PLATING REQUIRED  
Ø0.10 | A | L-K | E

HATCHED AREA DENOTES  
COMPONENT AND TRACE KEEP-OUT  
(EXCEPT CHASSIS GROUND)

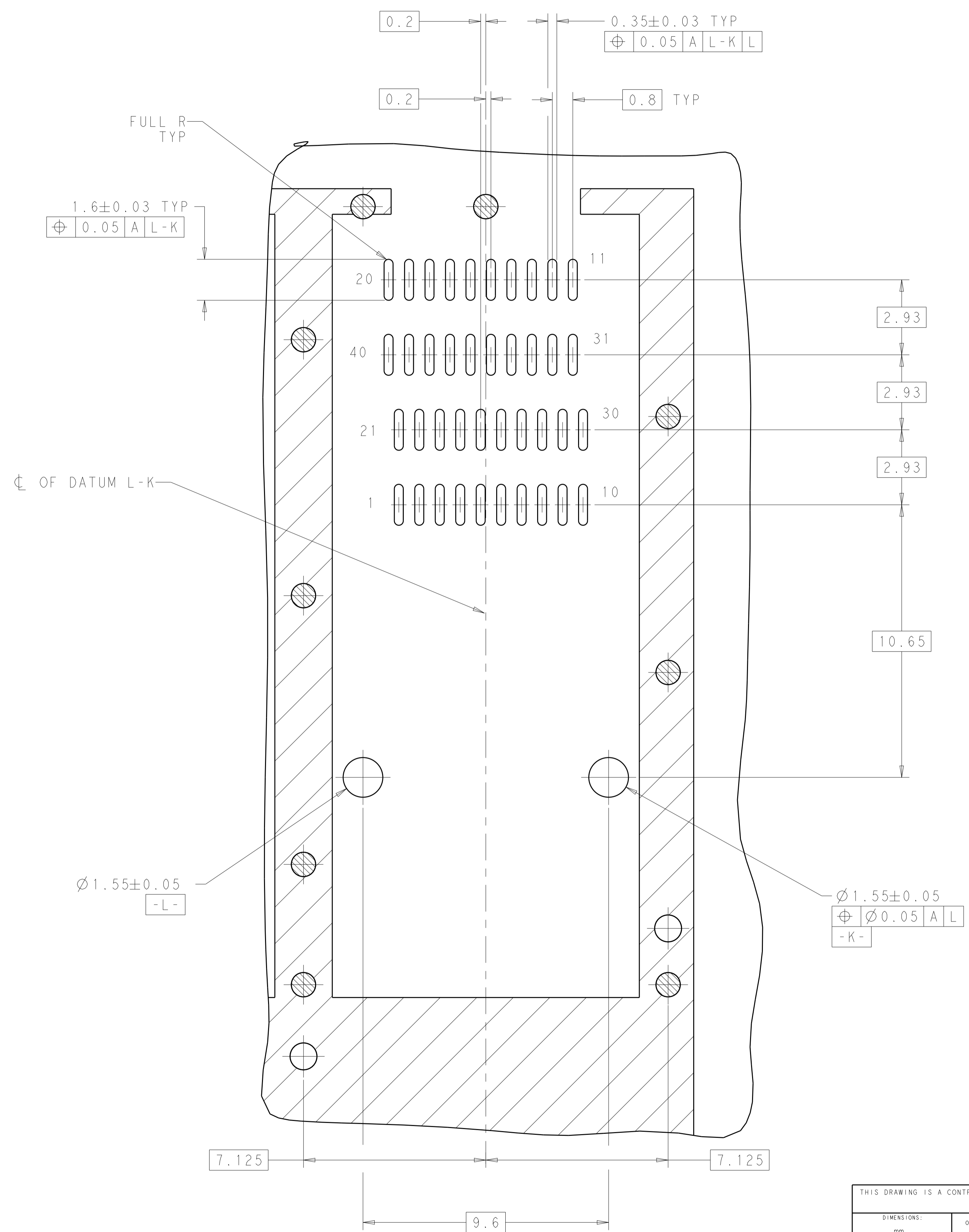
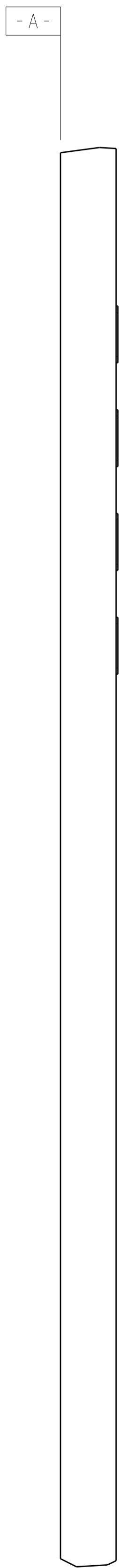
35X Ø1.05±0.05  $\triangle$   
PLATING REQUIRED  
Ø0.10 | A | L-K | E

Ø1.05±0.05  $\triangle$   
PLATING REQUIRED  
Ø0.10 | A | L-K | E

RECOMMENDED PCB CONFIGURATION WITH KEEP-OUTS FOR BELLY TO BELLY APPLICATIONS  
SAME AS SINGLE SIDE APPLICATION, EXCEPT AS SHOWN  
SCALE 5:1

THIS DRAWING IS A CONTROLLED DOCUMENT.		DWN: ARTHUR JIN 14NOV2019	TE Connectivity
		CHK: SEAN HAN 14NOV2019	
DIMENSIONS:	TOLERANCES UNLESS OTHERWISE SPECIFIED:	APVD:	NAME:
mm	0 PLC ±0.25	PRODUCT SPEC:	SFPDD 1X6 CAGE ASSEMBLY W/ HS
	1 PLC ±0.25	108-60128	PRESS-FIT, EXTERNAL EMI SPRINGS
	2 PLC ±0.20	APPLICATION SPEC:	
	3 PLC ±0.20	114-60027	SIZE: CAGE CODE: DRAWING NO:
	4 PLC ±	RESTRICTED TO:	A   00779   C=2345214
MATERIAL:	FINISH:	WEIGHT:	SCALE: 1:1 SHEET 4 OF 5 REV A
		RESTRICTED CUSTOMER	

REVISIONS				
P.	LTN	DESCRIPTION	DATE	APVD
-	SEE SHEET 1			



DETAIL C  
SCALE 10:1

THIS DRAWING IS A CONTROLLED DOCUMENT.		DWN: ARTHUR JLN 14NOV2019 CHK: SEAN HAN 14NOV2019 APVD:	
DIMENSIONS: mm	TOLERANCES UNLESS OTHERWISE SPECIFIED: 0 PLC ±0.25 1 PLC ±0.25 2 PLC ±0.20 3 PLC ±0.20 4 PLC ±0.20 ANGLES ±	PRODUCT SPEC: 108-60128 APPLICATION SPEC: 114-60027 WEIGHT:	
MATERIAL:		FINISH:	SCALE: 1:1 SHEET: 5 OF 5 REV: A