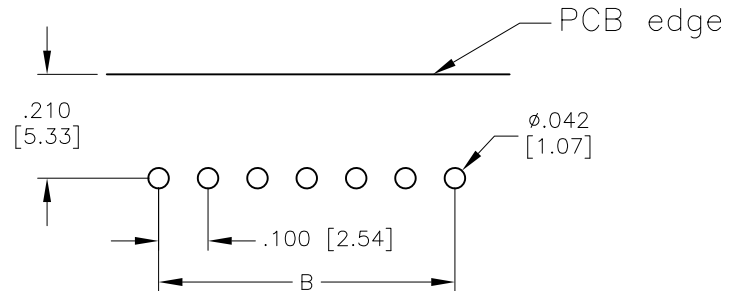
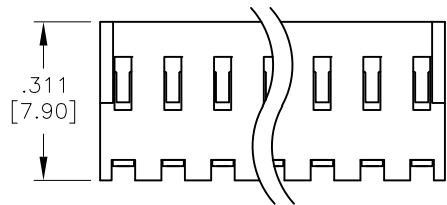
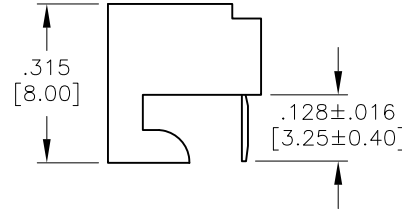
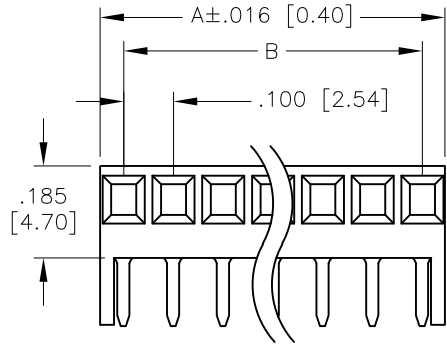


APPROVED: \_\_\_\_\_  
 DATE: \_\_\_\_\_ TITLE: \_\_\_\_\_

Rev	AWO #	Description	Date	Appr
-		RELEASED	6/2/05	
A		REDRAWN	10/5/11	
B		UPDATE TOLERANCE	1/29/21	LH/YC



RECOMMENDED  
PCB LAYOUT

**SPECIFICATIONS:**

Material:  
 Insulator: Nylon, rated UL 94V-0  
 Insulator color: White  
 Contacts: Phosphor Bronze  
 Plating:  
 Tin over Copper underplate overall  
 Electrical:  
 Voltage rating: 250 V  
 Current rating: 2.5 Amp max.  
 Contact resistance: 20 mohms max. initial  
 Insulation resistance: 5000 Mohms min.  
 Dielectric withstanding voltage: 1,500 VAC for 1 minute  
 Mechanical:  
 Recommended PCB thickness: 0.062" (1.57mm)  
 Temperature Rating:  
 0°C to +75°C  
 Environmental:  
 Lead free, RoHS compliant



Positions: 02 thru 25  
 A = .100 [2.54] x No. of Spaces + .096 [2.44]  
 B = .100 [2.54] x No. of Spaces

UNLESS OTHERWISE SPECIFIED ALL DIMENSIONS ARE INCHES [MM] TOLERANCES: EXCEPT AS NOTED INCHES HOLES .X ±.10 Ø.X ±.10 .XX ±.020 Ø.XX ±.015 .XXX ±.015 Ø.XXX ±.010		<b>ADAM TECH</b> 909 Rahway Avenue, Union, NJ 07083 Phone: 908-687-5000 Fax: 908-687-5710	
APPROVALS DRAWN SS CHECKED APPROVED		DATE 6/2/05	
TITLE .100 [2.54] PCB CONNECTOR BOARD HOOKS, SIDE ENTRY		SIZE X	PART NO. PCE-B-XX
REF: S00123T		SCALE: NTS	SHEET 1 OF 1

D  
C  
B  
A

6

5

4

3

2

1

6

5

4

3

2

1