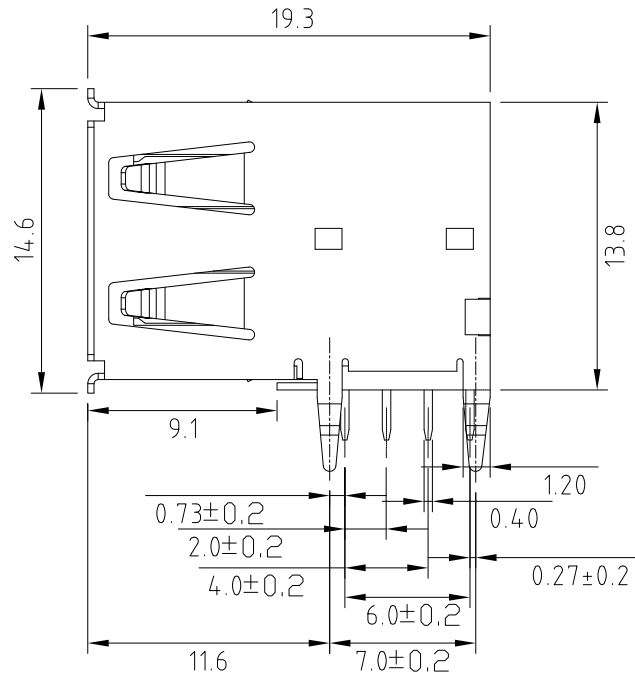
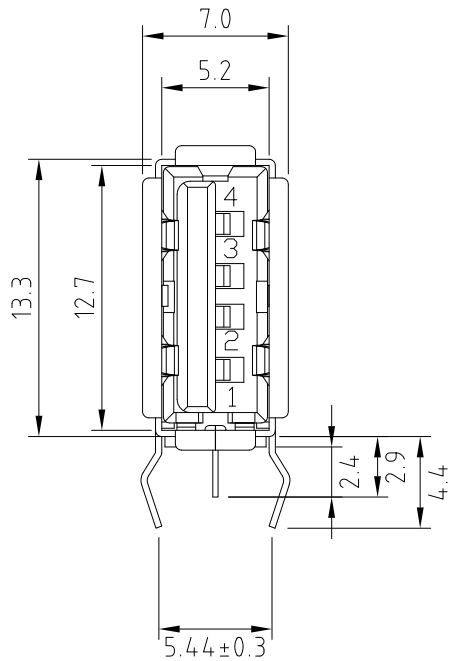


| SIGN | DATE       | DESCRIPTION          | APPROVER |
|------|------------|----------------------|----------|
| △    | 2012.10.03 | USB 2.0 detail added | SHIN     |
|      | 2019.12.19 | Updated drawing      |          |

THIS IS CAD DRAWING, DO NOT REVISE MANUALLY!!!



**Material**

- Insulator: Glass Filled Polyester
- Flammability: UL94V-0
- Contacts: Phosphor Bronze
- Contact Plating: See options
- Shell: Brass
- Shell Plating: 80u" Min. Tin over 50u" Cu

**Ratings**

- Current: 1A
- Voltage: 30V AC(r.m.s.)
- Contact Resistance: <30mΩ
- Insulation Resistance: >1,000 MΩ
- Dielectric Strength: 750V AC
- Operating Temp: -55° - +85°
- Storage Temp: -40° - +70°

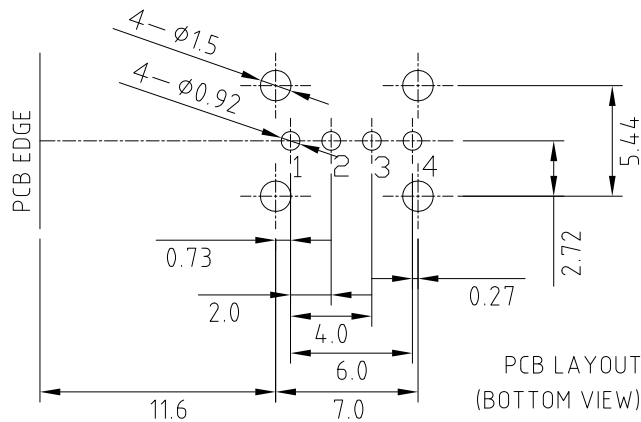
RoHS Compliant

PART NUMBER:

**USB-A1SSXX**

COLOR:  
B: Black  
W: White

PLATING:  
6: Selective Au Flash/50u" Ni  
8: Selective 30u" Au/50u" Ni (USB 2.0)



Recommended P.C. Board Layout

THESE DRAWINGS AND SPECIFICATIONS ARE THE PROPERTY OF ON-SHORE TECHNOLOGY, INC. AND SHALL NOT BE REPRODUCED, COPIED OR USED IN ANY MANNER WITHOUT THE PRIOR WRITTEN CONSENT OF ON-SHORE TECHNOLOGY, INC.



|          |                      |                                    |                      |           |  |                                                                 |
|----------|----------------------|------------------------------------|----------------------|-----------|--|-----------------------------------------------------------------|
| TITLE    |                      | USB - A type, Side type, thru hole |                      |           |  |                                                                 |
| PART NO. | USB-A1SSXX           | DWG NO.                            | USB-A1SSXX.DWG       |           |  |                                                                 |
| APPROVED | CHECKED              | DESIGNED                           | DRAWN                | 1200/2090 |  | Tolerance                                                       |
|          | Marvin<br>2006.11.12 | Marvin<br>2006.11.12               | Marvin<br>2006.11.12 |           |  | X° ±1°<br>X.X ±0.30/.012<br>X.XX ±0.20/.008<br>X.XXX ±0.10/.004 |
|          |                      |                                    |                      |           |  | UNIT: mm/inches<br>SCALE: NONE<br>SHEET: 01/01<br>REV.: A       |