

4

3

2

1

THIS DRAWING IS UNPUBLISHED.

RELEASED FOR PUBLICATION

© COPYRIGHT

ALL RIGHTS RESERVED.

LOC DIST


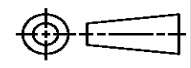
REVISIONS

P	LTR	DESCRIPTION	DATE	DWN	APVD
	S3	ECR-12-019756	14NOV2012	XZ	SX

REPLACED BY OCEAN STYLE APPLICATOR PART NUMBER 2151493-1

FOR REPLACEMENT PARTS FOR APPLICATOR 1238043
REFER TO ADDITIONAL PAGE(S). SPARE PARTS KIT (IF LISTED)
WILL REMAIN AVAILABLE.

THE REPLACEMENT OCEAN STYLE APPLICATOR HAS THE
SAME TERMINATOR/PRESS INTERFACE AS APPLICATOR
1238043

THIS DRAWING IS A CONTROLLED DOCUMENT.		DWN X. ZHAO	 TE Connectivity	
DIMENSIONS:		CHK S. XI		
		APVD S. XI	NAME	
TOLERANCES UNLESS OTHERWISE SPECIFIED:		PRODUCT SPEC	SIDE FEED HDI APPLICATOR	
0 PLC ±	1 PLC ±	APPLICATION SPEC	SIZE	CAGE CODE
2 PLC ±	3 PLC ±		A3	
4 PLC ±	ANGLES ±		DRAWING NO	RESTRICTED TO
MATERIAL	FINISH	WEIGHT	©- 1238043	
			SCALE	SHEET 1 OF 2 REV S3

Dimensioning and tolerancing per ASME Y14.5M-2009

A

B

D

D

C

B

A

Dimensioning and tolerancing per ASME Y14.5M-2009

THIS DRAWING IS UNPUBLISHED. RELEASED FOR PUBLICATION.
 © COPYRIGHT - BY TYCO ELECTRONICS CORPORATION. ALL RIGHTS RESERVED.

LOC	DIST	REV	DESCRIPTION	DATE	OWN	APPD
A	66	S2	ECR-10-010202	05-2010	RS	SX

PART NUMBER	REV	FIRST USED	TERMINATOR	FEED TYPE	DESCRIPTION
1238043-1	S	-	LEADMAKER	MECH POST FEED	CUTS CARRIER
1238043-2	S	-	BENCH	MECH PRE FEED	CUTS CARRIER
1238043-6	S	-	LEADMAKER	MECH POST FEED	CONTINUOUS CARRIER
7-1238043-1	S	-	LEADMAKER	MECH POST FEED	-1 AND SPARE PARTS
7-1238043-2	S	-	BENCH	MECH PRE FEED	-2 AND SPARE PARTS
7-1238043-6	S	-	LEADMAKER	MECH POST FEED	-6 AND SPARE PARTS
7-1238043-7	P	-	-	-	SPARE PARTS KIT

CRIMP DATA (AMP TERMINAL)			
TERMINAL NAME: SOCKET			
CRIMP	SIZE	TYPE	RANGE
WIRE	1.40 [.055 IN]	F	0.2-0.5mm ² Δ
INSUL	1.83 [.072 IN]	0	1.15-1.6 [.045-.063 IN]
WIRE STRIP LENGTH		APPL INSTRUCTION	
3.05-3.35 [.120-.132 IN]		408-8322	

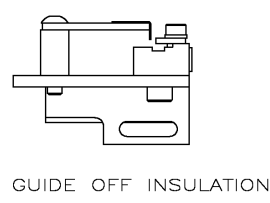
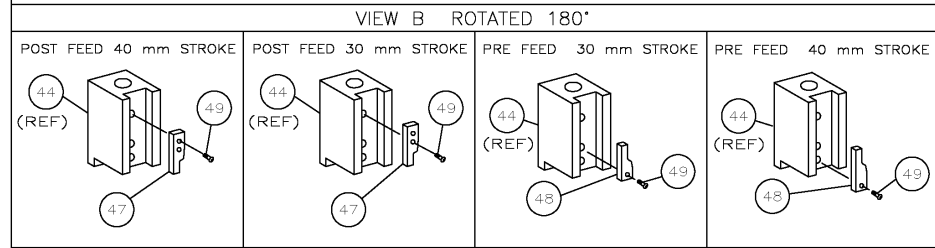
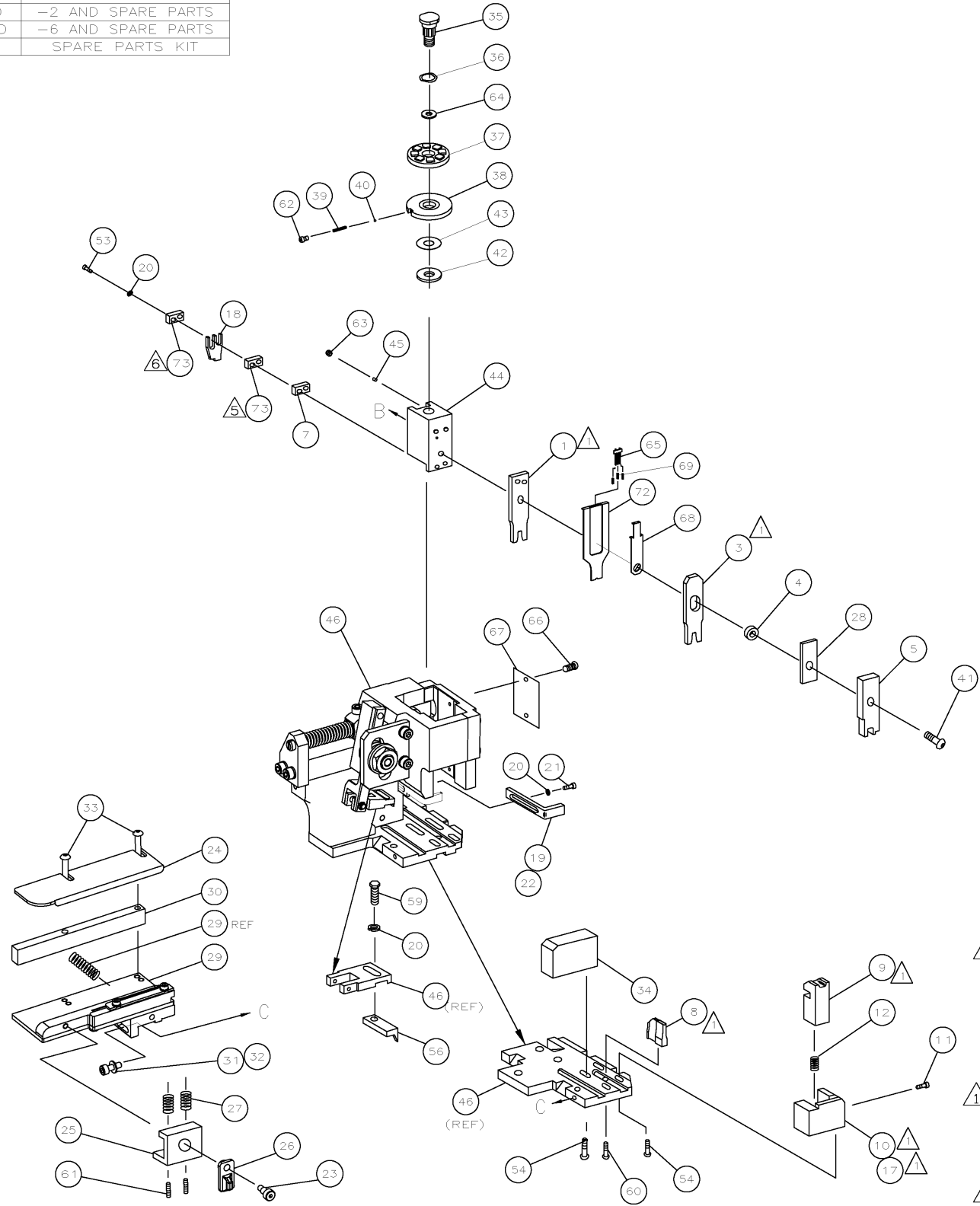
TERMINAL APPL SPEC	TERMINAL	FEED
114-18021	-	7.0 [.276 IN]

TERMINALS APPLIED				
928999	1703296	-	-	-
968220	-	-	-	-
928918	-	-	-	-
968893	-	-	-	-
1241918	-	-	-	-
1394702	-	-	-	-
1394408	-	-	-	-
1534116	-	-	-	-

WIRE SIZE mm ² AWG	CRIMP HEIGHT	PIN PN & LENGTH [IN]
0.50 mm ² Δ	0.86 \pm 0.03 [.034 \pm 0.001 IN]	5-354779-0 [.3240]
0.35 mm ²	0.76 \pm 0.03 [.030 \pm 0.001 IN]	5-354779-9 [.3285]
0.25 mm ²	0.72 \pm 0.03 [.028 \pm 0.001 IN]	6-354779-3 [.3305]

SET UP GAGE	LAYOUT
458637-3	L2377

- Δ 1. RECOMMENDED SPARE PARTS.
- 2. GREASE RAM, CAM, CAM FOLLOWER AND FEED ROD LIGHTLY.
- 3. LUBRICATE DAILY PER THE APPLICATOR INSTRUCTION SHEET SUPPLIED WITH THE APPLICATOR.
- Δ 4. 0.5mm² WIRE NOT SUITED FOR AIR BAG APPLICATIONS.
- Δ 5. ITEM 81 POSITION FOR TERMINAL 968893.
- Δ 6. ITEM 81 POSITION FOR ALL TERMINALS EXCEPT 968893.



QTY	REQD	PER	ASSY	PART NO	DESCRIPTION	ITEM NO			
-	1	1	1	1	1	1	1-240641-3	SPACER, DEP, REAR	73
-	1	1	1	1	1	1	1490525-1	DEPRESSOR, WIRE	72
-	1	1	1	1	1	1	1238043	PRINT, APPLICATOR LOG SHEET	71
-	1	1	1	1	1	1	1338705-1	DOCUMENTATION PACKAGE	70
-	2	2	2	2	2	2	1-23147-4	SPRING, DEPRESSOR	69
-	1	1	1	1	1	1	1490524-2	SPACER, DEPRESSOR	68
-	1	1	1	1	1	1	461264-1	PLATE, IDENTIFICATION	67
-	2	2	2	2	2	2	21017-2	SCR,DRIVE(#2x.19)ID PLATE	66
-	1	1	1	1	1	1	1424350-1	HOLDER, PIN, WIRED	65
-	1	1	1	1	1	1	986950-1	WASHER, FLAT PRECISION	64
-	1	1	1	1	1	1	3-18031-0	SCR,SKT_SET(M6X6 LW)RAM	63
-	1	1	1	1	1	1	18023-9	SCR,SHC(M4X6)INS DISC	62
-	2	2	2	2	2	2	2-18032-5	SCR,SET(M5X20)DRAG	61
-	1	1	1	1	1	1	18024-7	SCR,BHC(M4X10)ANVIL	60
-	1	1	1	1	1	1	5-18022-2	SCR,HEX(M4X8)FEED FINGER	59
-	-	-	-	-	-	-	-	-	58
-	-	-	-	-	-	-	-	-	57
-	1	1	1	1	1	1	1338685-1	PAWL, FEED	56
-	-	-	-	-	-	-	-	-	55
-	4	4	4	4	4	4	18024-8	SCR,BHC(M4X12)SHEAR HOLDER	54
-	2	2	2	2	2	2	1-18023-1	SCR, SHC(M4X10)TERM HLD DWN	53
-	-	-	-	-	-	-	-	-	52
-	-	-	-	-	-	-	-	-	51
-	-	-	-	-	-	-	-	-	50
-	1	1	1	1	1	1	18024-3	SCR,BHC(M3X10)CAM	49
-	-	-	-	-	-	-	1338675-1	CAM, PRE FEED 30 & 40 mm ST	48
-	1	-	1	-	1	-	1338676-1	CAM, POST FEED 30 & 40 mm ST	47
-	1	1	1	1	1	1	1320999-3	APPLICATOR BASIC SUBASSY	46
-	1	1	1	1	1	1	690191-1	PLUG, NYLON	45
-	1	1	1	1	1	1	1338660-1	RAM	44
-	1	1	1	1	1	1	690125-1	WASHER, LAMINATED	43
-	1	1	1	1	1	1	690124-1	WASHER, RAM	42
-	1	1	1	1	1	1	2-18024-6	SCR,BHC(M8X25)RAM	41
-	1	1	1	1	1	1	23241-1	BALL, STEEL	40
-	1	1	1	1	1	1	2-22278-7	SPRING, COMPRESSION	39
-	1	1	1	1	1	1	1320922-1	DISC, INSULATION	38
-	1	1	1	1	1	1	354777-1	WIRE DISC, PLASTIC	37
-	1	1	1	1	1	1	22480-5	WASHER, SPRING	36
-	1	1	1	1	1	1	690212-1	POST, RAM	35
-	1	1	1	1	1	1	3-1320934-1	TERMINAL SUPPORT	34
-	2	2	2	2	2	2	1-18024-0	SCR,BHC(M4X20)STRIP GUIDE	33
-	1	1	1	1	1	1	18027-2	WASHER, FLAT(M4)	32
-	1	1	1	1	1	1	1-18023-2	SCR,SKT_CAP(M4X12)MOUNT BLOCK	31
-	1	1	1	1	1	1	1320908-4	SPACER, STRIP GUIDE	30
-	1	1	1	1	1	1	1633073-1	STRIP GUIDE PLATE ASSY	29
-	1	1	1	1	1	1	2-455888-0	SPACER, FRONT SHEAR DEP	28
-	2	2	2	2	2	2	1-22284-0	SPRING, DRAG	27
-	1	1	1	1	1	1	356835-1	LEVER, DRAG RELEASE	26
-	1	1	1	1	1	1	240792-1	DRAG, TERMINAL	25
-	1	1	1	1	1	1	1320928-1	GUIDE, STRIP (REAR)	24
-	1	1	1	1	1	1	980371-4	SCR,SHC SHLD	23
-	1	-	1	-	1	-	690472-2	STRIPPER	22
-	1	1	1	1	1	1	1-18023-1	SCR,SHC(M4X10)STRIPPER	21
-	4	4	4	4	4	4	18025-2	WASHER,LOCK(M4)STRIPPER	20
-	-	1	-	-	1	-	690472-1	STRIPPER	19
-	1	1	1	1	1	1	879657-2	HOLD DOWN TERMINAL	18
-	1	-	-	-	1	-	1338684-1	HOLDER, SHEAR, FRONT (NO-CUT)	17
-	-	-	-	-	-	-	-	-	16
-	-	-	-	-	-	-	-	-	15
-	-	-	-	-	-	-	-	-	14
-	-	-	-	-	-	-	-	-	13
-	1	1	1	1	1	1	3-22280-3	SPRING, SHEAR	12
-	1	1	1	1	1	1	356885-4	STOP, SHEAR	11
-	-	1	-	-	1	-	1320921-1	HOLDER, SHEAR, FRONT (CUT)	10
-	1	1	1	1	1	1	462006-1	SHEAR, FLOAT (FRONT)	9
1	2	2	2	1	1	1	1-1338690-2	ANVIL	8
-	1	1	1	1	1	1	4-240641-2	SPACER, DEPRESSOR (REAR)	7
-	-	-	-	-	-	-	-	-	6
-	1	1	1	1	1	1	1-455889-4	DEPRESSOR, SHEAR (FRONT)	5
-	1	1	1	1	1	1	238011-8	SPACER, BLOCK CRIMPER	4
1	2	2	2	1	1	1	8-904741-0	CRIMPER, INSULATION	3
-	-	-	-	-	-	-	-	-	2
1	2	2	2	1	1	1	1-562108-5	CRIMPER, WIRE	1

DIMENSIONS:		TOLERANCES UNLESS OTHERWISE SPECIFIED:		APPLICATOR SPEC:		MATERIAL:		FINISH:	
INCHES	0	PLC	±	0.5	[02 IN]	WEIGHT	-	SCALE	-
	1	PLC	±	-	-				
	2	PLC	±	-	-				
	3	PLC	±	-	-				
	4	PLC	±	-	-				
	5	PLC	±	-	-				