

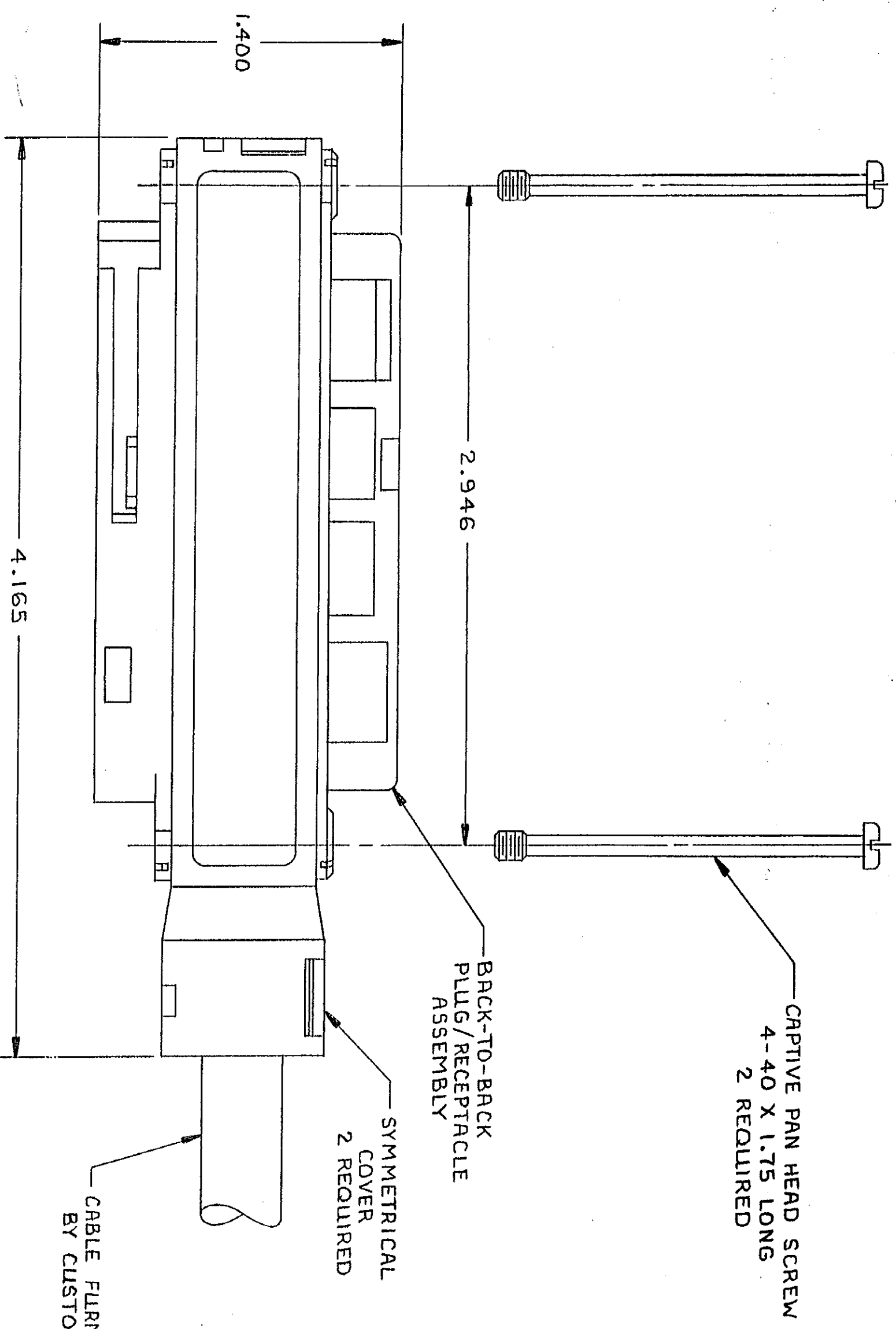
DRAWING MADE IN THIRD ANGLE PROJECTION

© COPYRIGHT 1980 BY AMP INCORPORATED, HARRISBURG, PA.
 ALL INTERNATIONAL RIGHTS RESERVED. AMP INCORPORATED PRODUCTS
 COVERED BY U. S. AND FOREIGN PATENTS AND/OR PATENTS PENDING.

1 2 3

LOG DIST AA 20

REVISIONS		DATE	APPROVED
P	F		
ZONE	LTR	DESCRIPTION	
A	B	REVISED; EON AA-7810	1-3-92 LHS ST



- △ MATERIAL: HOUSINGS & COVERS - THERMOPLASTIC (BLACK) TERMINALS - GOLD OVER NICKEL PLATED HIGH STRENGTH COPPER ALLOY. HARDWARE - ZINC PLATED STEEL
2. KIT SHOWN ASSEMBLED, HOWEVER, HARDWARE AND COVERS ARE INSTALLED AFTER CABLE IS APPLIED TO CONNECTORS.
 3. COVERS AND HARDWARE SHIPPED UNASSEMBLED.
 4. WIRE SIZE: 26 AWG SOLID OR 24 AWG 7 STRANDS OF COPPER CONDUCTORS. MAX INSULATION DIA OF .045 IS ACCEPTABLE FOR MOST APPLICATIONS.
 5. CABLE RANGE: .380 - .400 DIA.
 6. PLUG AND RECEPTACLE ARE BONDED TOGETHER.
 7. THE CONTACT SURFACES OF THE TERMINALS ARE COATED WITH LUBRICANT.
 8. ALL DIMENSIONS SHOWN ARE FOR REFERENCE ONLY UNLESS OTHERWISE SPECIFIED.
 9. CENTER-TO-CENTER SPACING OF TERMINALS IS .085.
 10. KIT SHIPPED IN POLY BAG FORM.

553257-1 AS SHOWN

UNLESS OTHERWISE SPECIFIED DIMENSIONS ARE IN INCHES. TOLERANCES ON: DECIMALS ± .005 ANGLES ± .1°		CONTRACT NO		PART NO	
MATERIAL		DR <i>O. Nell</i> 11-11-80		AMP INCORPORATED Harrisburg, Pa.	
FINISH		CHK <i>MDF</i> 11-12-80		NAME	
△		APPD <i>S. Hill</i> 11-12-80		KIT, BACK-TO-BACK, 50 POSITION, B SLOT (CHAMP-LOK, PLUG/RECEPTACLE, THIN FLANGE)	
△		DSGN APPD <i>R. K. ...</i> 11/13/80		SIZE CODE IDENT NO DRAWING NO	
		OTHER APPD <i>R. K. ...</i> 11/13/80		C 00779 553257	
				SCALE 2/1 SHEET 1 OF 1	

CUSTOMER DRAWING

AMP 1471-6 REV 12-78

553257