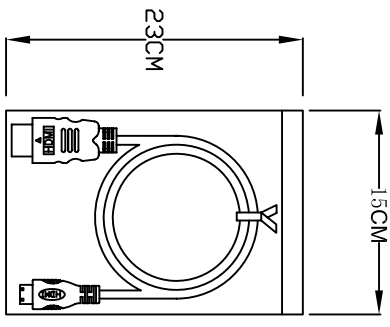
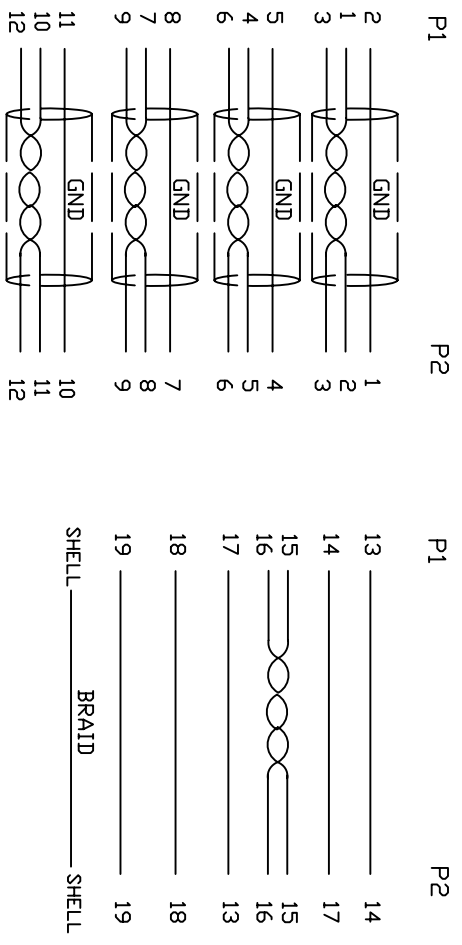


1. Wiring Diagram.



2. Cable test condition :

Open / Short : 100%

Insulation resistance : 5M ohms

Contact resistance : 2 ohm

Hipot : DC 300V / 1 sec

3. Each pcs with PE polybag.

7	COPER	W25MM*1.45MM	1	
6	COPER	W20MM*1.35MM	1	
5	PVC	45P PVC BLACK OVERMOLD	2.5g	
4	PE	LLDPE 500026 6201 INSIDE MOLDING	16g	
3	CONN	HDMI C TYPE MALE PIN G/F ,SHELL PLATED NICKEL, INSULATION BLACK	1	P2
2	CONN	HDMI A TYPE MALE PIN G/F ,SHELL PLATED NICKEL, INSULATION BLACK	1	P1
1	CABLE	UL20276 《30AWG (7/0.115) *P+EA+AL/MY》 *4+30AWG (7/0.115) *5C +AEM(16/6/0.12AM) OD:0 BLACK	1	1500mm

NO.		PART NO.		DESCRIPTION		QTY	UNIT/REF
BILL OF MATERIAL							
DRAWN		DATE		CHECKED		APPROVAL	
EDWIN LAI		07/26/17		Win C			
Cnc Tech, LLC				INITIAL RELEASE			
TITLE				DESCRIPTION			
HDMI A/M TO HDMI C/M CABLE				2017/7/26			
DWN NO.		CUSTOMER P/N:		REV		DATE	
742-10010-00150				A			
SHEET 1 OF 1							