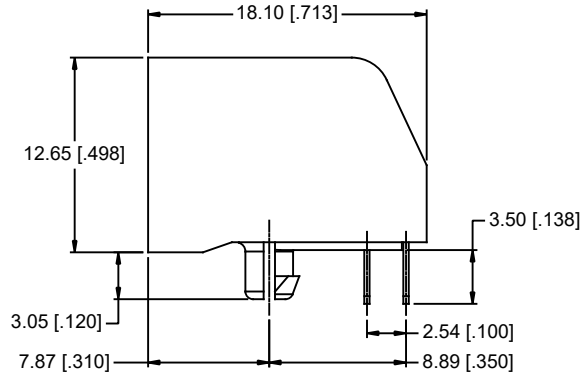
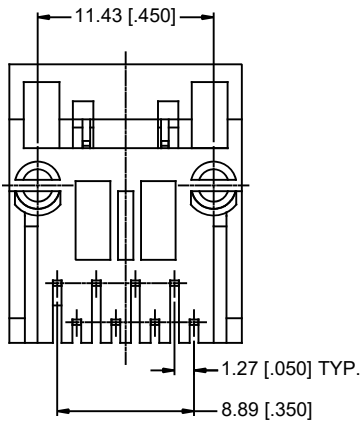


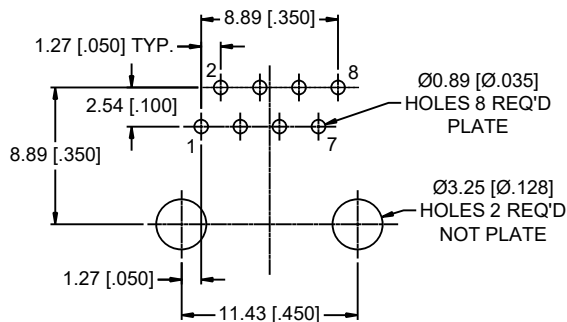
FRONT VIEW



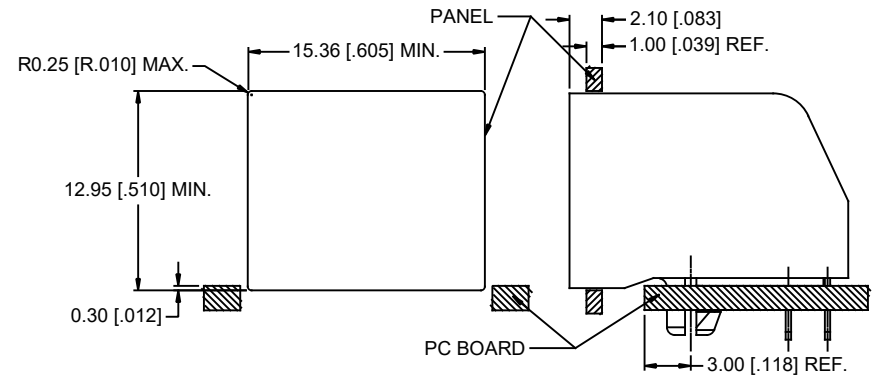
SIDE VIEW



BOTTOM VIEW



RECOMMENDED P.C.B LAYOUT
(TOLERANCE: $\pm 0.05[\pm 0.002]$)
(PCB THICKNESS: 1.57[.062])
(COMPONENT SIDE OF PC BOARD)



RECOMMENDED PANEL CUTOUT

REVISIONS			
REV	DESCRIPTION, ECN, EAR NO.	DATE	APP'D
A	NEW PROPOSAL	JUL19/22	KELVIN

NOTES:

- MATERIALS:**
CONTACTS: PHOSPHOR BRONZE, 0.35MM THICKNESS,
PLATING: 50 μ [1.27 MICRONS] MIN. GOLD PLATING
ON MATING SURFACES,
50 μ [1.27 MICRONS] MIN. NICKEL OVERALL.
GOLD FLASH ON CONTACT TAILS.
HOUSING: ENGINEERING THERMOPLASTIC, FLAMMABILITY RATING UL 94V-0
COLOR - BLACK.
- MECHANICAL:**
MATING FORCE: 5.0 LBS MAXIMUM
- ELECTRICAL:**
CONTACT RESISTANCE: 20 MILLIOHMS MAXIMUM
INSULATION RESISTANCE: 500 MEGOHMS MINIMUM
CURRENT RATING: 1.5 AMPS
VOLTAGE RATING: 125 VOLTS AC
- ENVIRONMENTAL:**
STORAGE TEMPERATURE: -40°C TO +85°C
- RECOMMENDED SOLDERING TEMPERATURE:**
WAVE SOLDERING PEAKED AT 260°C FOR 5 TO 8 SECONDS.

AMPHENOL PART NUMBER: RJE03-188-0416



UNLESS SPECIFIED OTHERWISE	DRAWN RONNIE.C	JUL19/22
PRIMARY UNITS MILLIMETERS	CHECKED KELVIN.T	JUL19/22
SECONDARY INCHES	M.E. APP'D	
REFERENCE IN PARENTHESES	Q.A. APP'D	
GENERAL TOLERANCES	DWG APP'D	
1 DECIMAL PLACE ± 0.25	ENG. REL. NO.	
2 DECIMAL PLACES ± 0.13	REF.	
3 DECIMAL PLACES ± 0.05		
ANGULAR DEGREES $\pm 2.0^\circ$	THIRD ANGLE PROJECTION	DO NOT SCALE DRAWING

Amphenol Canada Corp.
Commercial Products

SINGLE PORT MODULAR JACK,
TAB DOWN, 8 POSITION, 8 CONTACTS,
UNSHIELDED -RoHS COMPLIANT

DWG NO.	P-RJE03-188-0416	REV	A
CODE ID NO.	03554	DWG SIZE	X
SCALE	N/A	SHEET	1 OF 1