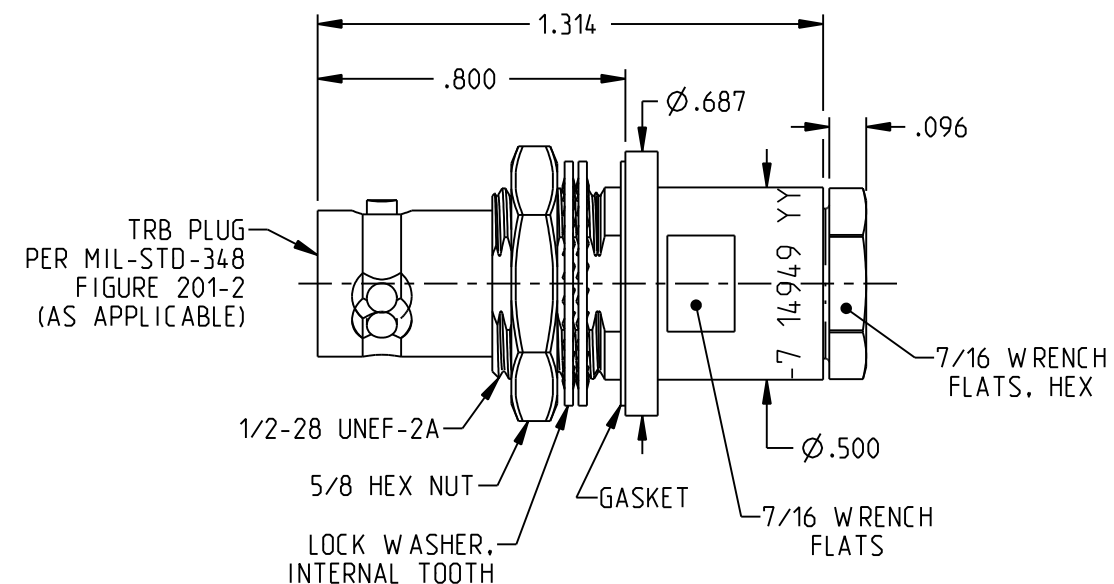
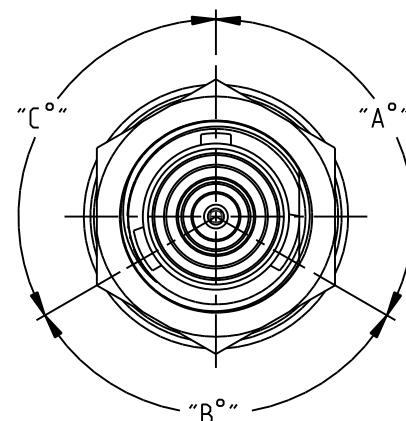
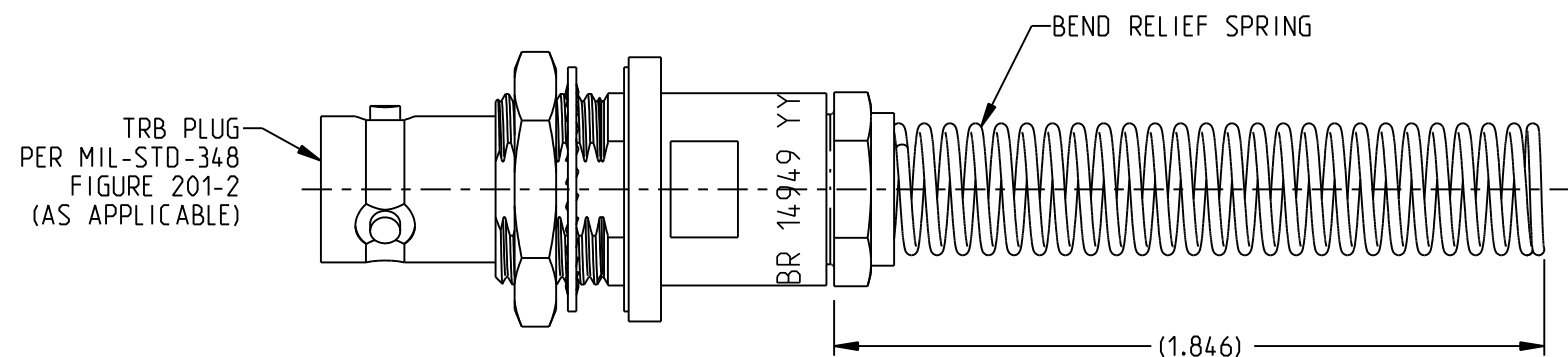
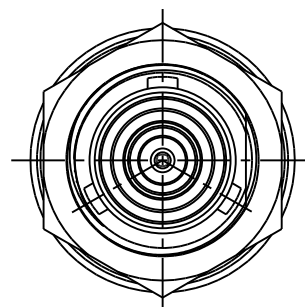


TABLE 1			
MODEL NUMBER	CABLES ACCOMMODATED	ASSEMBLE PER	SH
BJ79-7	TRC-50-2 TRC-75-2	TAI-189	1
BJ79-9	TWC-78-2 TWC-124-2	TAI-102	
BJ79-23	250-3884, MICRODOT	TAI-189	
BJ79-24	202-3934, MICRODOT	TAI-102	
BJ79-24A	9530A5117, RAYCHEM	TAI-189	
BJ79-25	T-43M, GENERAL	TAI-102	
BJ79-25A	5021H5331, RAYCHEM	TAI-189	
BJ79-26	7028A5518, RAYCHEM		
BJ79-27	202-3927, MICRODOT		
BJ79-29	TWC-78-1 TWC-124-1A	TAI-102	
BJ79-30	761A, W.E.CO. 8441, BELDEN	TAI-189	
BJ79-32	TRC-50-1		
BJ79-33	TRC-75-1		
BJ79-42	21-204, ESSEX 4463 CONSOLIDATED	TAI-102	
BJ79-43	250-4044, 250-4045, 293-3930, MICRODOT		
BJ79-45	M27500-22TE2T14 1100-66F, STANDARD		
BJ79-47	M17/176-00002	TAI-189	
BJ79-49	TWAC-78-1F2		
BJ79-55	89272, BELDEN		
BJ79-56	GC875GC1, GRUMMAN	TAI-102	
BJ79-57	GC875GB1, GRUMMAN		
BJ79-58	GC875TM24H, GRUMMAN		
BJ79-58-1T	GC875TM24H, GRUMMAN	TAI-189	
BJ79-59	GC875LN1, GRUMMAN		
BJ79-60	M17/177, THERMATICS 380-10045, BOEING		
BJ79-64	7528A5314, RAYCHEM	1	

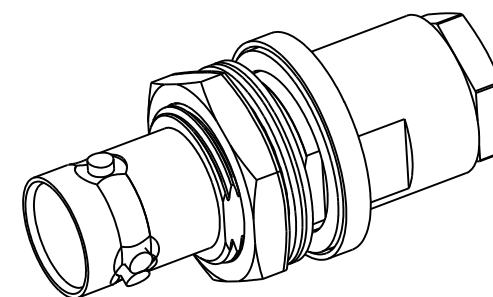
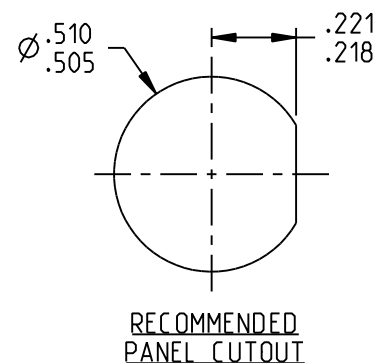
TABLE 2			
POLARIZATION CHART			
KEYING LETTER	"A°"	"B°"	"C°"
NONE	120	120	120
T	100	150	110
U	120	130	110
V	115	130	115
W	125	110	125
X	130	100	130
Y	110	140	110
Z	100	160	100
S	135	135	90



BJ79-7 SHOWN
UNLESS OTHERWISE SPECIFIED
DIMENSIONS COMMON TO ALL MODEL NO.



BJ79-7BR SHOWN



NOTES: UNLESS OTHERWISE SPECIFIED.

- MATERIAL & FINISH:
 - BODY, CONE & CLAMP NUT: NICKEL PLATED BRASS
 - INSULATORS & DIELECTRIC: PTFE (TEFLON)
 - INTERMEDIATE CONTACT: GOLD PLATED BRASS
 - CENTER CONTACT: GOLD PLATED BERYLLIUM COPPER
 - GASKET: SILICONE RUBBER
 - MOUNTING HARDWARE: NICKEL PLATED COPPER ALLOY
 - BEND RELIEF SPRING: PASSIVATED STAINLESS STEEL

- ELECTRICAL:
 - FREQUENCY (MAX): 500 MHz
 - IMPEDANCE: NON-CONSTANT

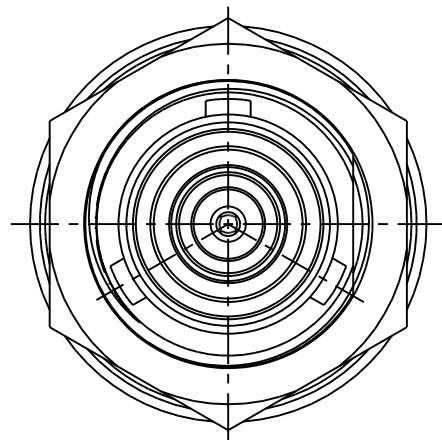
3. PANEL NUT TORQUE (MAX): 40 IN-LBS

4. ASSEMBLE PER TABLE 1.

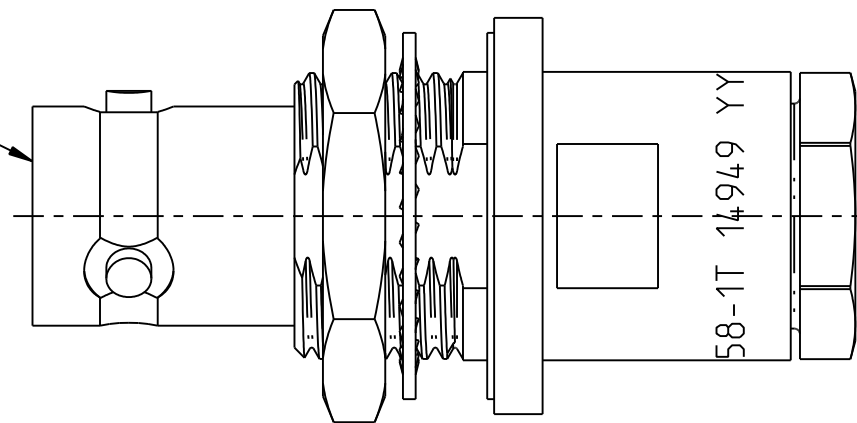
5. EXAMPLE OF COMPLETE MODEL NO.

BJ79 A -BB BR
 └──┬── BEND RELIEF SPRING (OPTIONAL)
 └──┬── ASSEMBLY DASH NO.
 └──┬── KEYING LETTER PER TABLE 2 (AS APPLICABLE)
 └──┬── BASE MODEL NO.

	30° ANGLE PROJECTION	TROMPETER	
	RoHS2 2011/65/EU	Title: TRB CABLE JACK, BULKHEAD MOUNT, WRENCH CRIMP	
<small>NOTICE: The information in this drawing is PROPRIETARY and must not be used without the permission of Cinch Connectivity Solutions. It may contain data whose export is restricted. Verify status prior to exporting.</small>		Model No. BJ79A-BBCC	
<small>INTERPRET DRAWING IN ACCORDANCE WITH ASME Y14.5-2018</small>	<small>UNLESS OTHERWISE SPECIFIED UNITS: INCH</small> .XX ±.02 .XXX ±.010 ANGLES ±2°	Size B DO NOT SCALE DRAWING	Date: 7/13/2023 Sheet 1 OF 2



TRB PLUG
PER MIL-STD-348
FIGURE 201-2
(AS APPLICABLE)



BJ79-58-1T SHOWN

NOTES: UNLESS OTHERWISE SPECIFIED (THIS PAGE)

1. MATERIAL & FINISH:

- 1.1 BODY, CONE & CLAMP NUT: TIN PLATED BRASS
- 1.2 INSULATORS & DIELECTRIC: PTFE (TEFLON)
- 1.3 INTERMEDIATE CONTACT: GOLD PLATED BRASS
- 1.4 CENTER CONTACT: GOLD PLATED BERYLLIUM COPPER
- 1.5 GASKET: SILICONE RUBBER
- 1.6 MOUNTING HARDWARE: TIN PLATED COPPER ALLOY

<p>NOTICE: The information in this drawing is PROPRIETARY and must not be used without the permission of Cinch Connectivity Solutions. It may contain data whose export is restricted. Verify status prior to exporting.</p> <p>INTERPRET DRAWING IN ACCORDANCE WITH ASME Y14.5-2018</p>	<p>RoHS2 <input checked="" type="checkbox"/></p> <p>2011/65/EU</p> <p>UNLESS OTHERWISE SPECIFIED UNITS: INCH</p> <p>.XX ±.02 .XXX ±.010 ANGLES ±2°</p>	<p>TROMPETER</p> <p>Title: TRB CABLE JACK, BULKHEAD MOUNT, WRENCH CRIMP</p>	
		<p>Model No. BJ79A-BBCC</p>	
<p>Size B</p>	<p>DO NOT SCALE DRAWING</p>	<p>Date: 7/13/2023</p>	<p>Sheet 2 OF 2</p>