

NOTES:

ELECTRICAL:

1. VOLTAGE RATING : 150 VAC RMS.
2. CURRENT RATING : 1.5 AMP.
3. CONTACT RESISTANCE: 20 MILLIOHMS MAX.
4. INSULATION RESISTANCE: 1000 MEGOHMS MIN @ 500 VDC.
5. DIELECTRIC STRENGTH: 1000 VAC RMS 60Hz, 1MIN.

MECHANICAL:

1. HOUSING MATERIAL : GLASS FILLED POLYESTER UL94V-0.
2. CONTACT MATERIAL : PHOSPHOR BRONZE ϕ 0.46mm.
3. PLATING : GOLD PLATING OVER NICKEL.
4. OPERATING LIFE : 750 CYCLES MIN.
5. PCB RETENTION PRE-SOLDER: 1 LB MIN.
6. PCB RETENTION POST-SOLDER: 10 LBS MIN.

ENVIRONMENTAL:

1. STORAGE : -40°C TO +85°C.
 2. OPERATION: -20°C TO 85°C.
- MATES WITH MODULAR PLUG CONFORMING TO FCC PART 68, SUBPART F.

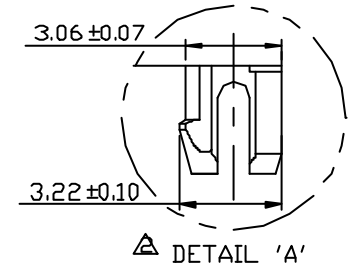
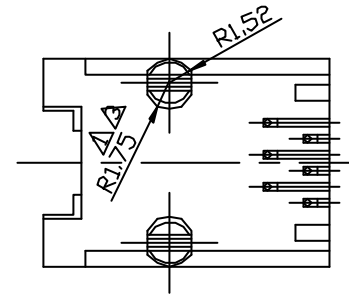
PART NUMBER: E536X-300XGX

4- 4C
6- 6C

1- 3u' 2- 6u' 3-15u'
4-30u' 5-50u'

MATERIAL OF HS'G :
J- PBT + G.F. WHITE.
N- PBT + G.F. GRAY.

REVISION RECORD				
REV	ECO	DESCRIPTION	DRFT	CHKD
△		MODIFY LEG DIM	CH	
△		Modify Drawing	Synge	04/02/03
△		Modify Drawing	Synge	5/22/2003
△		Modify Drawing	Synge	5/28/2003
△		Modify Drawing	Thomas	11/25/2003



DETACHEE LISTS	MM CIRCLED	DFTD Thomas	DATE 11/25/2003
	TOLERANCES EXCEPT AS NOTED	CHKD MING-WO	DATE 11/25/03
		MFD LMJ	DATE 11/25/03
		APPROVUAN	DATE 11/25/03
	.0 ± .02		
	.00 ± .05		
	.000 ± .0075		
	ANGLES ± .05	QT'Y :	
	THIRD ANGLE PROJECTION	FINISH:	
		SCALE : 3 : 1	

FULL RISE ELECTRONIC CO., LTD

TITLE
11.5mm SIDE PCB JACK 6P

DRAWING NO. GE533A42 SIZE REV
/PART NO. SEE NOTE A3 4

DO NOT SCALE DRAWING SHEET 1 OF 1