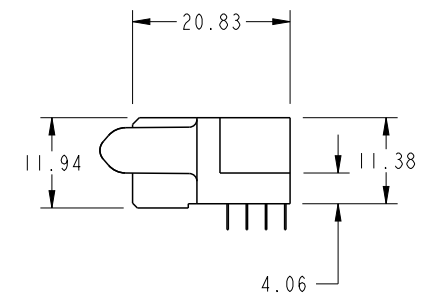
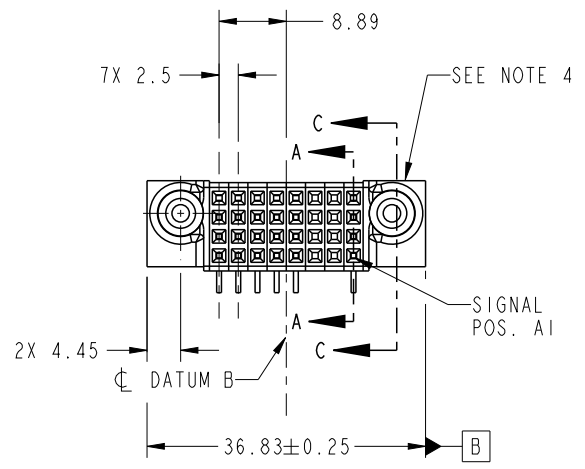




Copyright FCI.

PRODUCT NO.	ROWS	SIGNAL									
		E2	8	7	6	5	4	3	2	1	E1
51915-295 -- NOTE 3	D	⊙	H	H	H	H	H	X	X	H	⊙
	C	⊙	G	G	G	G	X	X	G	⊙	
	B	⊙	F	F	F	F	X	X	F	⊙	
	A	⊙	E	E	E	E	X	X	E	⊙	



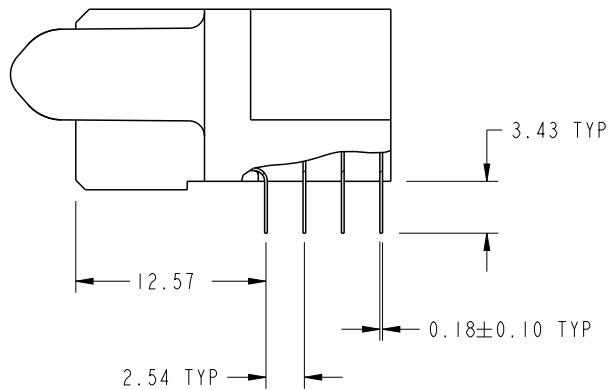
CODE	DIM "M" MATING LENGTH	CONTACT TYPE
H	[N/A]	SIGNAL
G	[N/A]	SIGNAL
F	[N/A]	SIGNAL
E	[N/A]	SIGNAL
X	OMITTED	OMITTED

spec ref	SEE NOTE		dr	Anson Liu	2011/04/02	projection 	MM ←→	size	A4	scale	1:1	
tolerance std	TOLERANCES UNLESS OTHERWISE SPECIFIED		eng	Luo Weller	2012/09/16			product family	PwrBlade	rel level	Released	
			chr	-	-				ecn no	-		
surface ✓	linear	0.X	±0.50	FCI www.fci.com	title	32 S R/A STB RECEPTACLE	dwg no	51915-295	rev	A		
		0.XX	±0.25									
		0.XXX	±0.10									
	angular	0°	±2°	cat. no.	Product - Customer Drw			sheet 1 of 4				

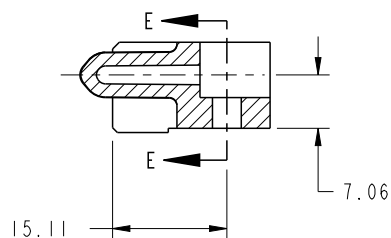
PwrE File - REV C - 2009-06-09

PRODUCT NUMBER

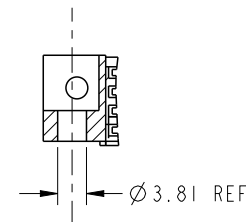
51915-295__
NOTE 3



BROKEN-OUT SECTION A-A
SCALE 2:1



SECTION C-C

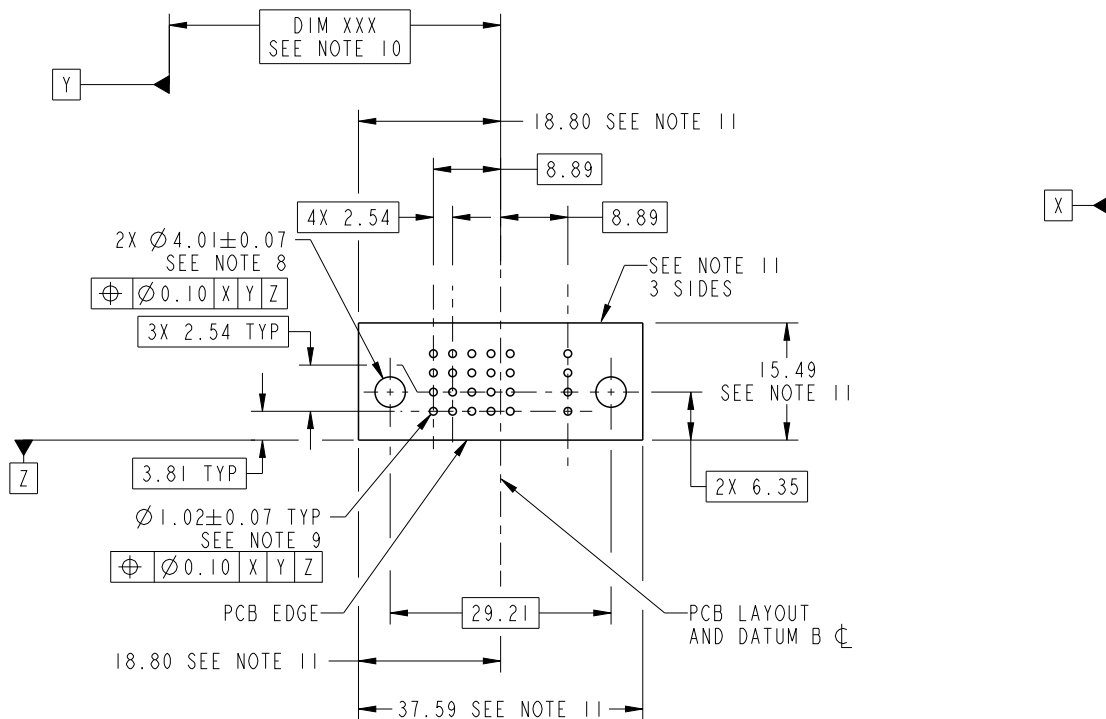


PARTIAL SECTION E-E

spec ref	SEE NOTE			dr	Anson Liu	2011/04/02	projection 	MM ←→	size	A4	scale	1:1
tolerance std	TOLERANCES UNLESS OTHERWISE SPECIFIED			eng	Luo Weller	2012/09/16			ecn no	-		
				chr	-	-						
surface ✓	linear	0.X	±0.50	FCj	title	32 S	product family	PwrBlade	rel level	Released		
		0.XX	±0.25									
		0.XXX	±0.10									
	angular	0°	±2°	www.fci.com	cat. no.	Product - Customer Drw	sheet 2 of 4					

PRODUCT NUMBER

51915-295__
NOTE 3



RECOMMENDED PCB LAYOUT

spec ref	SEE NOTE			dr	Anson Liu	2011/04/02	projection	MM	size	A4	scale	1:1	
tolerance std	TOLERANCES UNLESS OTHERWISE SPECIFIED			eng	Luo Weller	2012/09/16			ecn no	-			
surface	linear	0.X	±0.50	appr	Pei-Ming Zheng	2012/09/17	product family	PwrBlade		rel level			Released
		0.XX	±0.25										
		0.XXX	±0.10			title	32 S		dwg no	51915-295		rev	A
	angular	0°	±2°	www.fci.com		cat. no.	Product - Customer Drw			sheet 3 of 4			

PRODUCT NUMBER

51915-295__
NOTE 3

NOTES:

1. DIMENSIONS AND TOLERANCES ARE IN ACCORDANCE WITH ASME Y14.5M, 1994 UNLESS OTHERWISE SPECIFIED.

CONNECTOR NOTES:

- 2. HOUSING MATERIAL: UL 94 V-0 GLASS FILLED HIGH-TEMP THERMOPLASTIC
POWER CONTACT MATERIAL: COPPER ALLOY
SIGNAL PIN MATERIAL: COPPER ALLOY
- 3. SEE ITEM 5 & 6 IN PRINT 10064183 FOR PLATING SPEC OF 51915-295 AND 51915-295LF RESPECTIVELY.
- 4. MANUFACTURER'S NAME, DATE CODE AND OPTIONAL P/N TO APPEAR ON THIS SURFACE. THE P/N CAN BE OMITTED IF THERE IS NOT ENOUGH SPACE ON THIS SURFACE.
- 5. PRODUCT SPECIFICATION GS-12-149.
APPLICATION SPECIFICATION BUS-20-067.
- 6. PACKAGED IN TRAYS.

PCB NOTES:

- 7. ALL HOLE DIAMETERS ARE FINISHED HOLE SIZE.
- 8. MOUNTING HOLES, WHERE APPLICABLE, ARE UNPLATED.
- 9. $\varnothing 1.151 \pm 0.025$ DRILLED HOLES PLATED WITH
0.008 MIN SnPb OR Sn OVER 0.03
TO 0.08 Cu PLATING TO ACHIEVE
 $\varnothing 1.02 \pm .07$ HOLE.
- 10. "DIM XXX" TO BE DETERMINED BY THE CUSTOMER.
- 11. CONNECTOR KEEP-OUT ZONE.
- 12. THE VOID CORING IN BETWEEN POWER MODULES, SIGNAL MODULES AND END MODULES ARE OPTIONAL AND THE SHAPE MAY BE DIFFERENT FOR OPTIMIZE THE MOLDING PROCESS. THE VOID CORING WILL NOT EFFECT TO PRODUCT FUNCTION.

spec ref	SEE NOTE			dr	Anson Liu	2011/04/02	projection 	MM 	size	A4	scale	1:1		
tolerance std	TOLERANCES UNLESS OTHERWISE SPECIFIED			eng	Luo Weller	2012/09/16			ecn no	-				
				chr	-	-								
surface <input checked="" type="checkbox"/>	linear	0.X	± 0.50	appr	Pei-Ming Zheng	2012/09/17	product family	PwrBlade	rel level			Released		
		0.XX	± 0.25						title	32 S	dwg no	51915-295	rev	A
		0.XXX	± 0.10											
	angular	0°	$\pm 2^\circ$						www.fci.com					