



SAW filters for infrastructure systems

Series/Type: B3608

The following products presented in this data sheet are being withdrawn.

Ordering Code	Substitute Product	Date of Withdrawal	Deadline Last Orders	Last Shipments
B39141B3608Z510	B39141B5246H810	2012-01-13	2012-12-31	2013-03-30

For further information please contact your nearest EPCOS sales office, which will also support you in selecting a suitable substitute. The addresses of our worldwide sales network are presented at www.epcos.com/sales.

© EPCOS AG 2015. Reproduction, publication and dissemination of this publication, enclosures hereto and the information contained therein without EPCOS' prior express consent is prohibited.

EPCOS AG is a TDK Group Company.

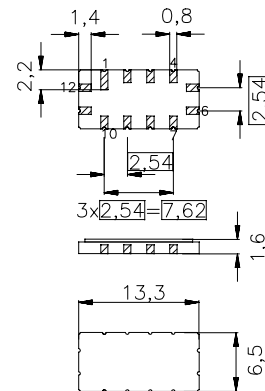
Preliminary Data Sheet

 Ceramic package **QCC 12**
Features

- High performance IF bandpass filter
- Constant group delay
- Hermetically sealed ceramic package

Terminals

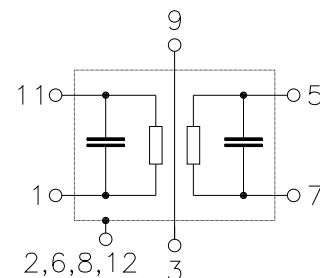
- Gold plated



Dimensions in mm, approx. weight 0,4 g

Pin configuration

- | | |
|-----------------------------|------------------------------|
| 11 | Input or balanced Input |
| 1 | Input-Ground or bal. Input |
| 5 | Output or balanced Output |
| 7 | Output-Ground or bal. Output |
| 2, 3, 4, 6,
8, 9, 10, 12 | Must be grounded |



Type	Ordering code	Marking and Package according to	Packing according to
B3608	B39141B3608Z510	C61157A0007A055	F61074V8026Z000

Electrostatic Sensitive Device (ESD)
Maximum ratings

Operable temperature range	T	- 40/+ 85	°C	source impedance 50 Ω s. imp. 50 Ω , duty cycle 1:100
Storage temperature range	T_{stg}	- 40/+ 85	°C	
DC voltage	V_{DC}	0	V	
Source power	P_s	10	dBm	
Source power	P_s	20	dBm	

Preliminary Data Sheet
Characteristics

Operating temperature:

$T = 25 \text{ }^{\circ}\text{C}$

Terminating source impedance:

$Z_S = 50 \text{ } \Omega \text{ and matching circuit}$

Terminating load impedance:

$Z_L = 50 \text{ } \Omega \text{ and matching circuit}$

		min.	typ.	max.	
Center frequency (Center between 3dB points)	f_C	139,75	140,00	140,25	MHz
Insertion attenuation at f_C	α_C	—	10	11	dB
Group delay at f_C	τ_C	1,18	1,23	1,28	μs

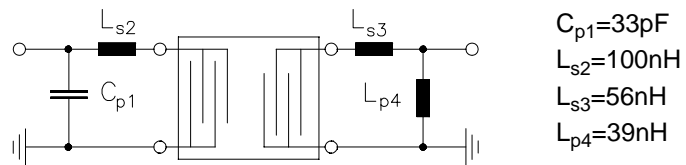
Preliminary Data Sheet
Characteristics

Operating temperature:	$T = -40\text{ °C} \dots +85\text{ °C}$
Terminating source impedance:	$Z_S = 50\ \Omega$ and matching circuit
Terminating load impedance:	$Z_L = 50\ \Omega$ and matching circuit
Group delay aperture:	200 kHz

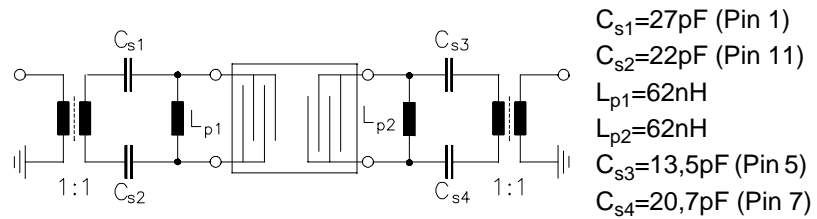
		min.	typ.	max.	
Center frequency (Center between 3dB points)	f_C	138,85	140,00	141,15	MHz
Insertion attenuation at f_C	α_C	—	—	13	dB
Amplitude ripple (max peak to adjacent valley) (80% of B_{3dB})	$\Delta\alpha$ 133,60 ... 146,40 MHz	—	0,5	0,9	dB
Phase ripple (p-p) (80% of B_{3dB})	$\Delta\phi$ 133,60 ... 146,40 MHz	—	7	14	°
Pass bandwidth					
	$\alpha_{rel} \leq 1\text{ dB}$	B_{1dB}	15,0	16,0	— MHz
	$\alpha_{rel} \leq 3\text{ dB}$	B_{3dB}	16,0	16,8	— MHz
	$\alpha_{rel} \leq 40\text{ dB}$	B_{40dB}	—	21,0	22,0 MHz
Relative attenuation relative to α_C	α_{rel}				
	100,00 ... 128,70 MHz	40	45	—	dB
	128,70 ... 129,00 MHz	37	43	—	dB
	151,00 ... 152,30 MHz	24	30	—	dB
	152,30 ... 180,00 MHz	40	45	—	dB
Group delay ripple (p-p) (80% of B_{3dB})	$\Delta\tau$ 133,60 ... 146,40 MHz	—	80	140	ns
Reflected wave signal suppression 0,70 μs ... 3,75 μs after main pulse		35	38	—	dB
Temperature coefficient of frequency	TC_f	—	- 87	—	ppm/K

Preliminary Data Sheet
Matching circuit: Element values depending on PCB layout

Input and output unbalanced

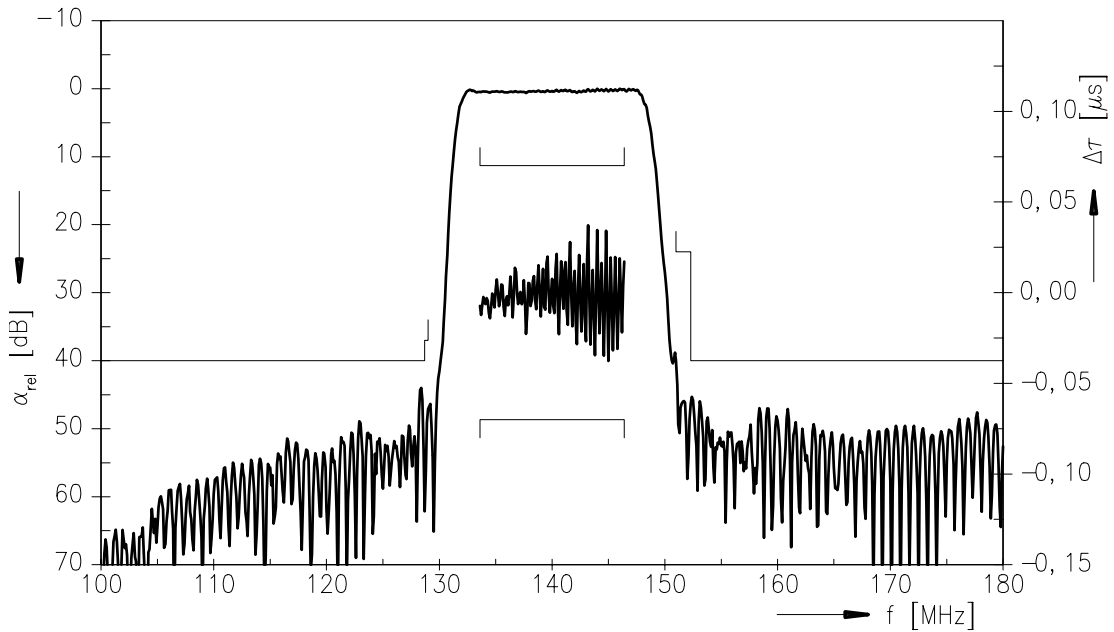


Input and output balanced

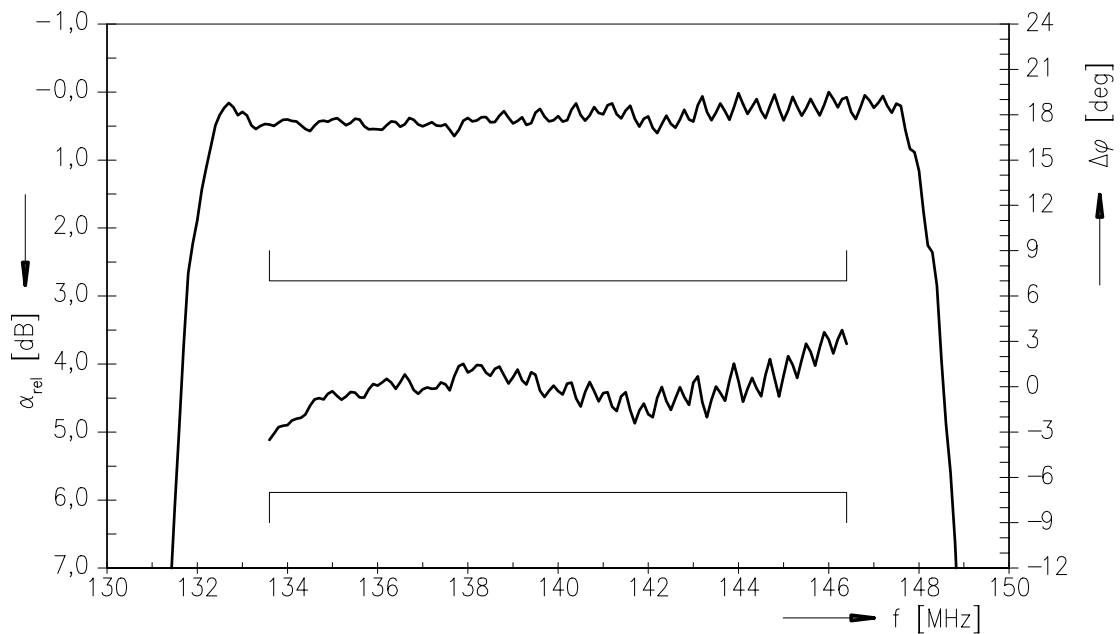


Preliminary Data Sheet

Normalized frequency response



Normalized frequency response



SAW Components

B3608

Low-Loss Filter

140 MHz

Preliminary Data Sheet

Attachment

Pyroelectric pulse amplitude < 100 mV.

Published by EPCOS AG

**Surface Acoustic Wave Components Division, SAW MC IS,
P.O. Box 80 17 09, 81617 Munich, GERMANY**

© EPCOS AG 2002. Reproduction, publication and dissemination of this brochure and the information contained therein without EPCOS' prior express consent is prohibited.

Purchase orders are subject to the General Conditions for the Supply of Products and Services of the Electrical and Electronics Industry recommended by the ZVEI (German Electrical and Electronic Manufacturers' Association), unless otherwise agreed.

This brochure replaces the previous edition.

For questions on technology, prices and delivery please contact the Sales Offices of EPCOS AG or the international Representatives.

Due to technical requirements components may contain dangerous substances. For information on the type in question please also contact one of our Sales Offices.