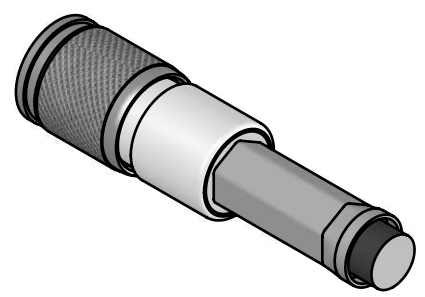


RECOMMENDED CABLE: BELDEN B1855A

CRIMPED FERRULE HEX CRIMP SIZE .178 [4.52].

CRIMPED CONTACT PIN HEX CRIMP SIZE .042 [1.07].

ALTERNATE CONTACT PIN RADIAL CRIMP TOOL:
 - DANIELS HAND TOOL NUMBER: MH995 OR MH992
 - DANIELS POSTIONER NUMBER: K1803



RECOMMENDED CABLE STRIPPING AND CRIMPING DIMENSIONS

- NOTES:
1. BODY: COPPER ALLOY, NICKEL PLATED.
 2. CONTACT PIN: COPPER ALLOY, GOLD PLATED.
 3. SPRING: BERYLLIUM COPPER, NICKEL PLATED.
 4. TINE CONTACT: BERYLLIUM COPPER, GOLD PLATED.
 5. INSULATOR: TEFLON
 6. FERRULE: COPPER ALLOY, NICKEL PLATED.
 7. CHARACTERISTIC IMPEDANCE: 75 OHMS, 3 GHz BANDWIDTH.
 8. RETURN LOSS: MEETS HDTV SMPTE 424M SPECIFICATION.
 9. DIMENSIONS ARE FOR REFERENCE ONLY.
 10. THIS PRODUCT IS RoHS COMPLIANT.

CUSTOMER DRAWING

REV	ECO NUMBER	DATE	BY	APVD
B	26729	01/24/12	TS	BDS
A	26641	10/06/10	ZS	SRC

UNLESS OTHERWISE SPECIFIED

1. ALL DIMENSIONS IN INCHES
 - TWO PLACE DECIMALS ±0.02
 - THREE PLACE DECIMALS ±0.005

DO NOT SCALE DRAWING

THIS DRAWING DESCRIBES A DESIGN CONSIDERED PROPRIETARY IN NATURE, DEVELOPED AND MANUFACTURED BY SWITCHCRAFT INC. AND IS RELEASED ON A CONFIDENTIAL BASIS FOR IDENTIFICATION PURPOSES ONLY.									
SIZE *	WIDTH *	MULT *	LBS/M *	TEMPER *	MATERIAL SEE NOTES				
FINISH *					SPEC No. *				
FIRST USED ON *			SCALE 4:1		SEE NOTES				
DATE DRAWN	BY	CHKD	APVD	Switchcraft®					
04/29/10	ZS	04/29/10	04/29/10	SHEET 1 OF 1					
NAME			PART No.		REV				
DIN 1.0/2.3 PLUG, 75OHMS, RoHS			DIN1855A		B				