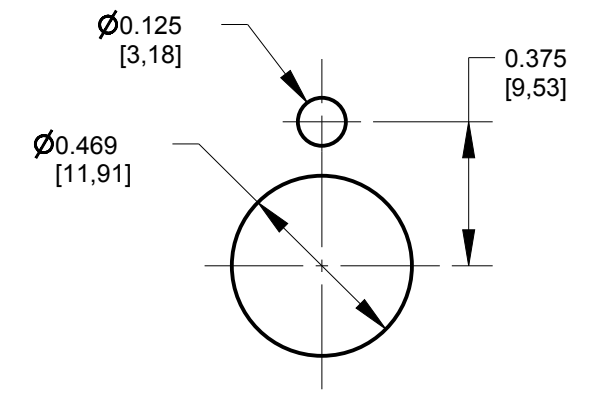
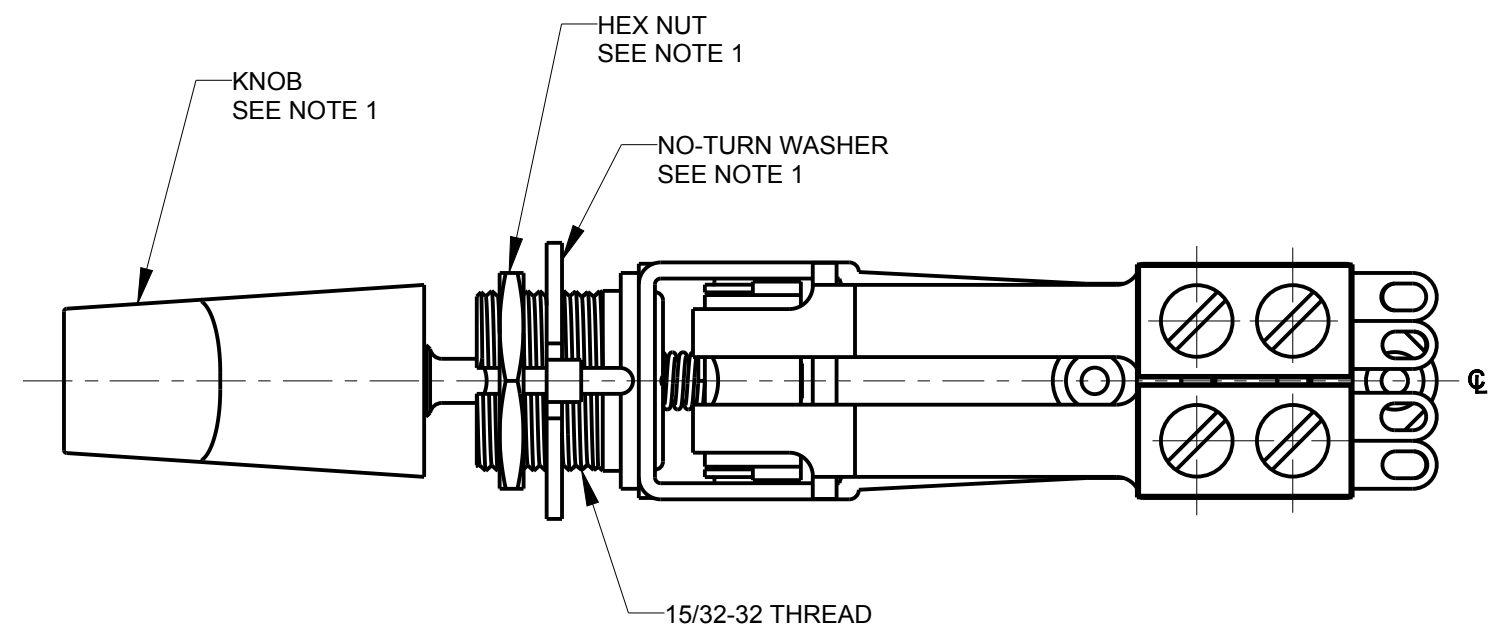
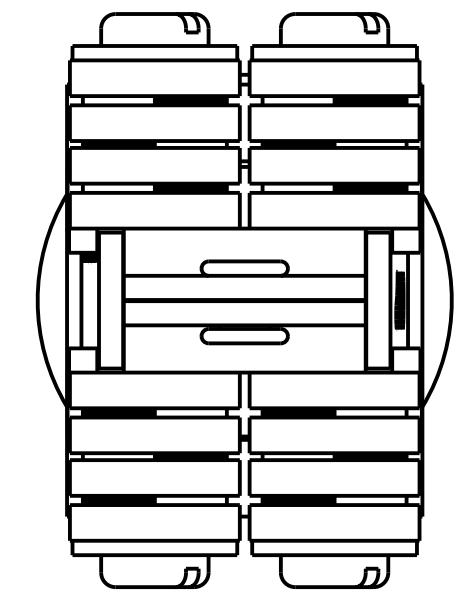
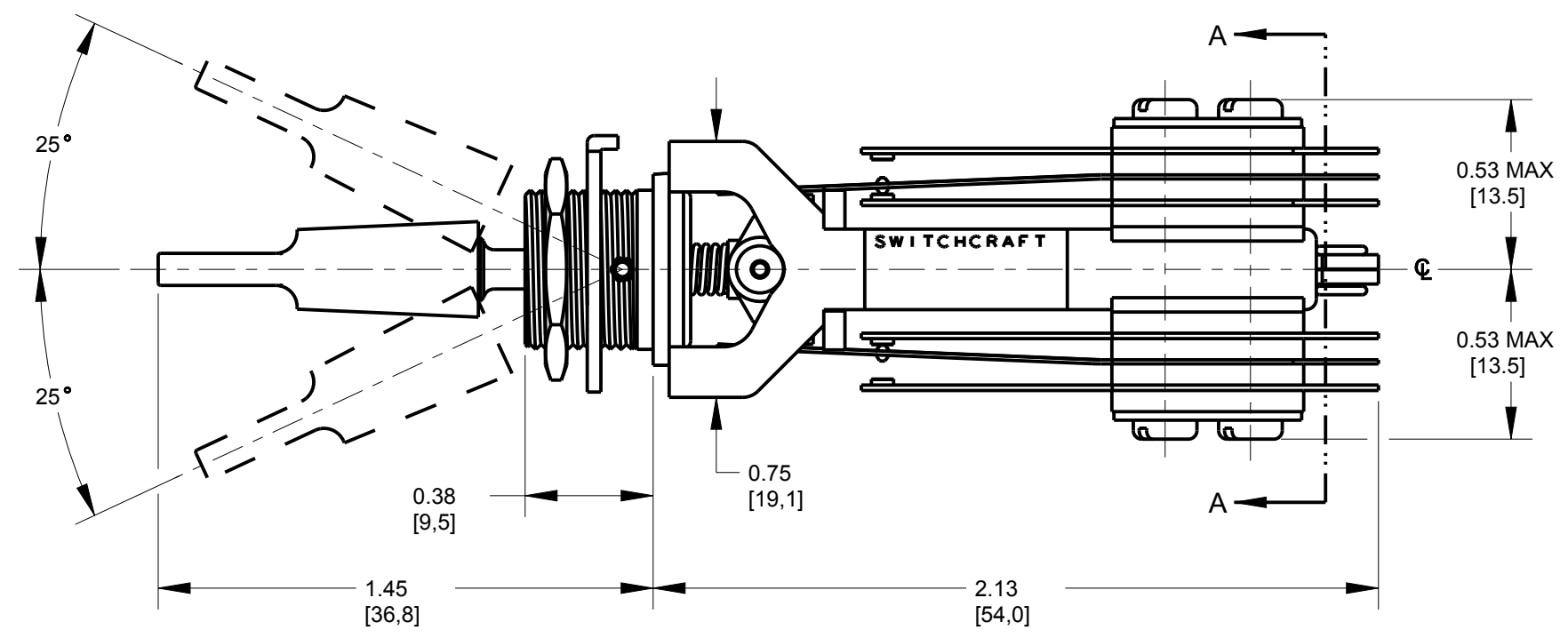
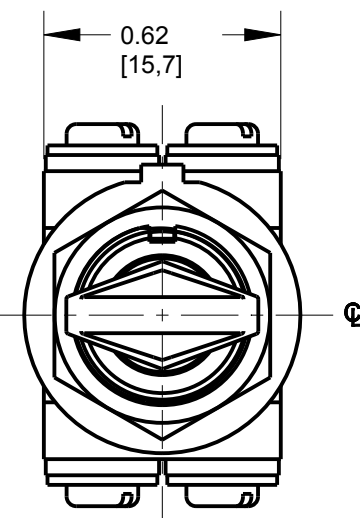


**SCHEMATIC CIRCUIT**  
TYP (2)



RECOMMENDED PANEL CUT-OUT FOR USE WITH NO-TURN WASHER



SECTION A-A  
TERMINAL POSITIONS  
SCALE 3:1

- NOTES:
1. KNOB AND HARDWARE SHIPPED UNASSEMBLED.
  2. MAX PANEL THICKNESS: 0.25 [6.4]
  3. MATERIALS:  
 FRAME - CRS, ZINC PLATED  
 BUSHING & ACTUATOR - COPPER ALLOY, NICKEL PLATED  
 SPRINGS - SPECIAL COPPER ALLOY  
 TERMINALS - TINNED DIPPED SOLDER LUGS  
 INSULATORS - PHENOLIC  
 LIFTERS & ROLLERS - THERMOPLASTIC  
 SCREWS - CRS, NICKEL PLATED  
 HEX NUT - COPPER ALLOY, NICKEL PLATED  
 WASHER - CRS, NICKEL PLATED  
 KNOB - THERMOPLASTIC, BLACK
  4. THIS PRODUCT IS RoHS COMPLIANT

CUSTOMER DRAWING

REV	ECO NUMBER	DATE	BY	APVD
A	27887	05-12-17	PC	TJK
REVISIONS				

★ STAR SYMBOL DENOTES CRITICAL DIMENSION

UNLESS OTHERWISE SPECIFIED

1. ALL DIMENSIONS IN INCHES  
 -TWO PLACE DECIMALS ±0.01  
 -THREE PLACE DECIMALS ±0.005  
 -ANGLES ±1°  
 -ALL DIA. CONCENTRIC WITHIN 0.005 T.I.R.
2. FEATURES ON THE SAME CENTERLINE MUST BE ALIGNED WITHIN ±0.002
3. REMOVE ALL BURRS

DO NOT SCALE DRAWING

THIS DRAWING DESCRIBES A DESIGN CONSIDERED PROPRIETARY IN NATURE, DEVELOPED AND MANUFACTURED BY SWITCHCRAFT INC. AND IS RELEASED ON A CONFIDENTIAL BASIS FOR IDENTIFICATION PURPOSES ONLY.				
SIZE	WIDTH	MULT	LBS/M	TEMPER
FINISH		MATERIAL		
SPEC No.		SPEC No.		
FIRST USED ON		SCALE 2:1		
DATE DRAWN	BY	CHKD	APVD	
May-15-19	PC	PC	TJK	
		05-15-19	05-15-19	
NAME			PART No.	REV
LT SERIES LEVER SWITCH			41312X	A
3 POSITION NON-LOCK, RoHS				