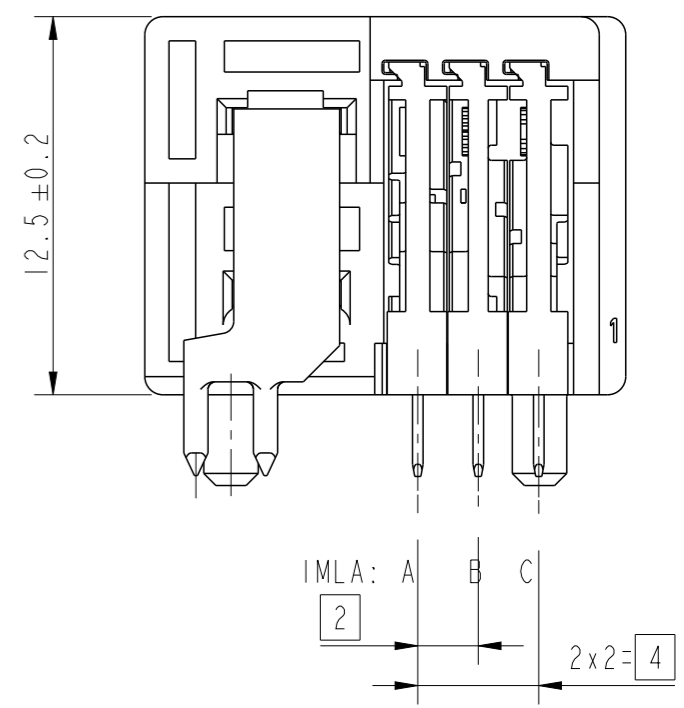
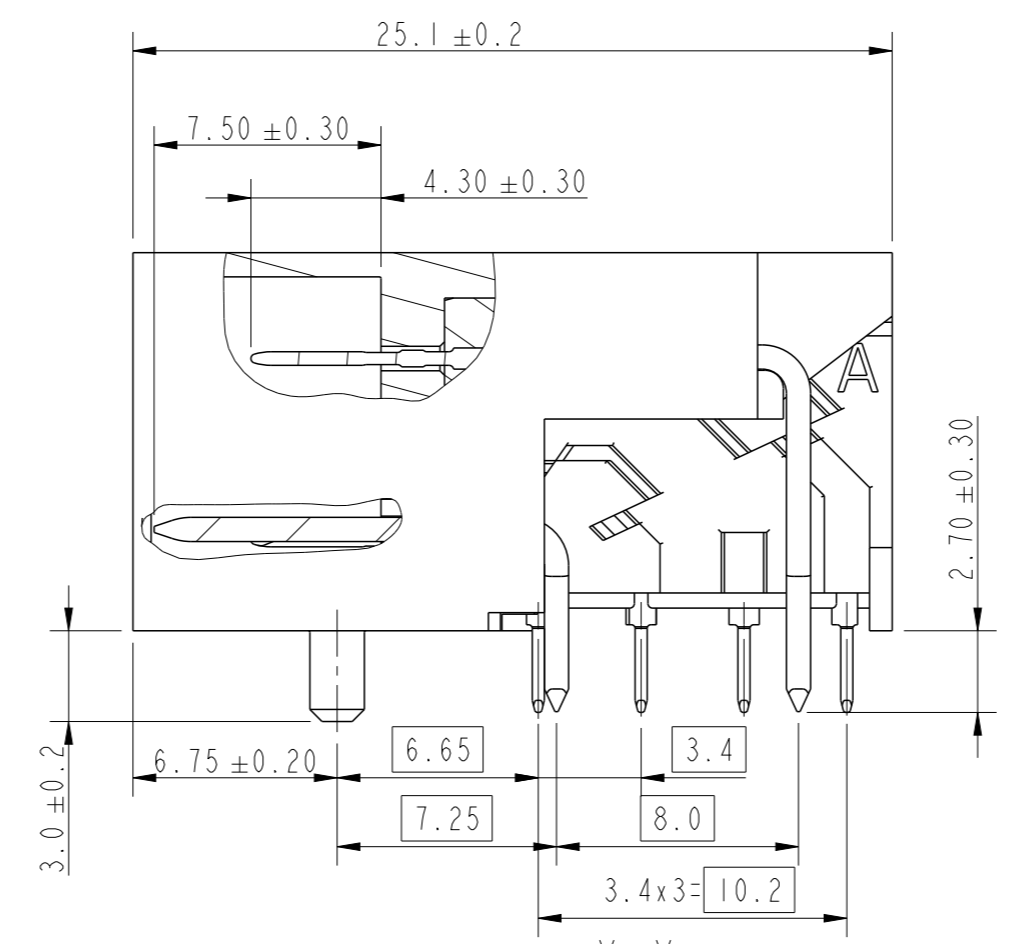
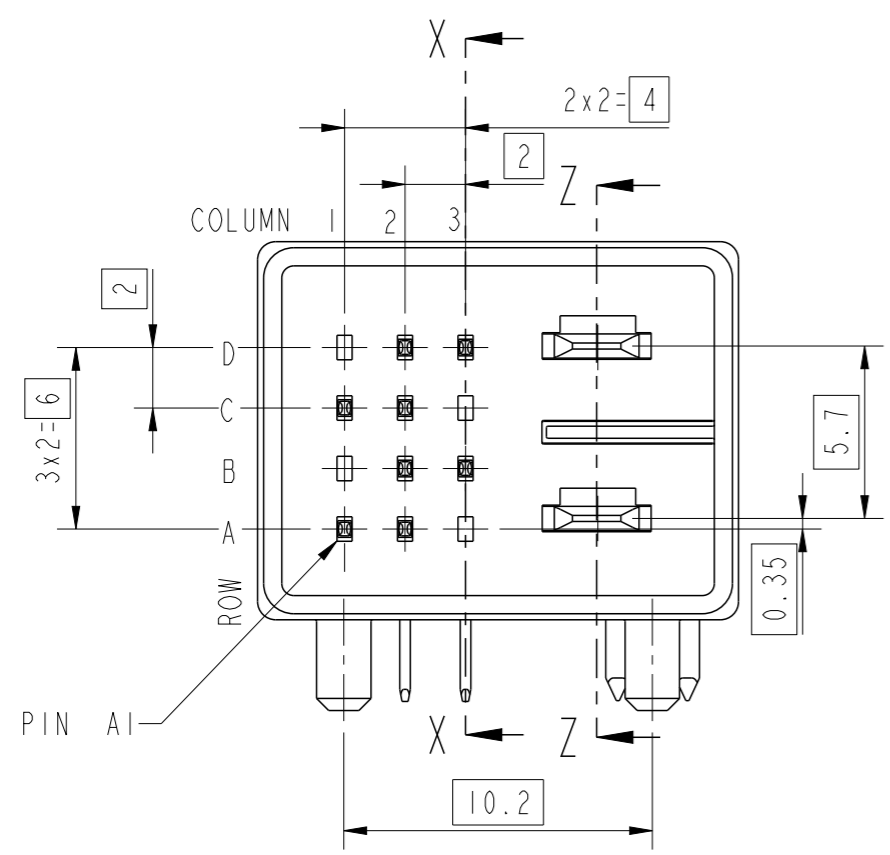
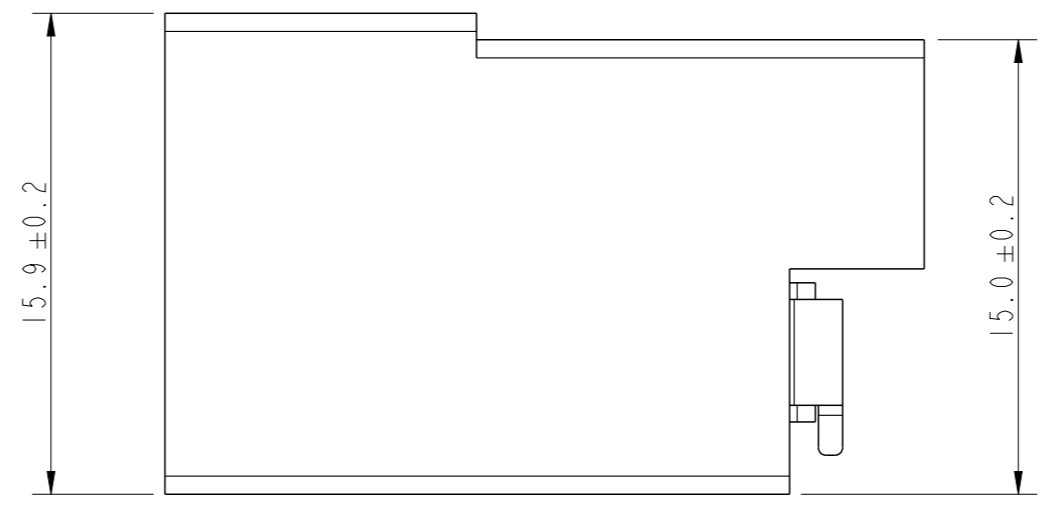


PRODUCT NUMBER  
SEE TABLE

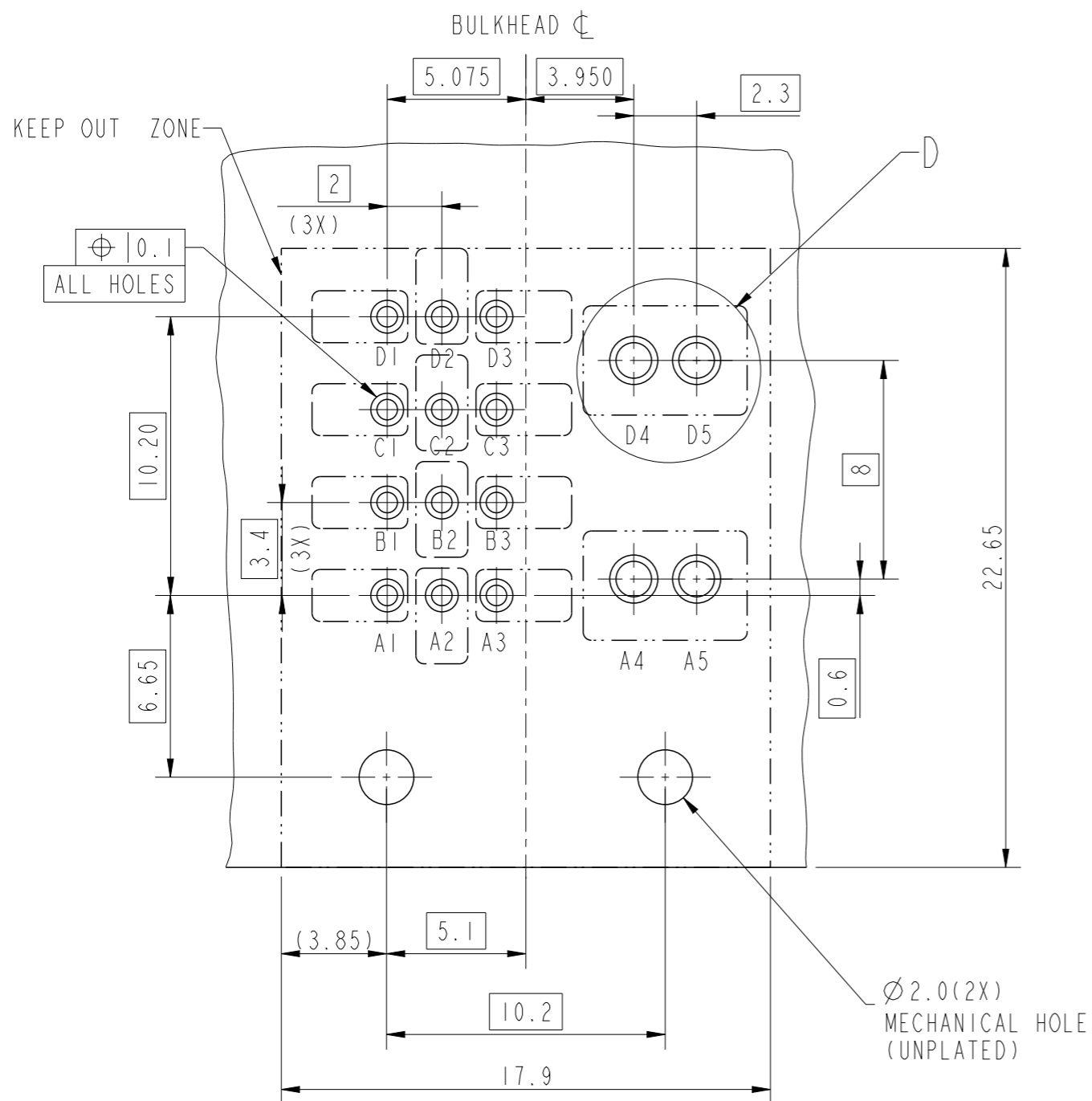


AFCI PART NO	ROW	COLUMN 1	COLUMN 2	COLUMN 3
10140949-101LF (VIEWS SHOWN IN THIS SHEET)	D	-	X	X
	C	X	X	-
	B	-	X	X
	A	X	X	-
10140949-102LF	D	X	X	X
	C	X	X	-
	B	X	X	X
10140949-103LF	D	X	X	X
	C	X	X	X
	A	X	X	X

SECTION X-X  
Z-Z  
SCALE 4:1

spec ref	-	dr	Jibin John	2017/09/26	projection	mm	size	A3	scale	1:1	
tolerance std	ISO 406 ISO 1101	eng	B T Varghese	2017/10/26			ecn no	ELX-I-28252-1	rel level	Released	
surface	linear	chr	-	apppr			K-Paul Biju	2017/10/26		product family	VERIO
ISO 1302	angular	0°	±2°	<b>Amphenol FCI</b>		title VERIO HYBRID (SIGNAL&POWER) RA BOARD CONNECTOR SIGNAL & PWR PIP TERMINATION	dwg no 10140949	rev C	cat. no. -	Product - Customer Drw	sheet 1 of 4

VIEW FROM COMPONENT SIDE



NOTE:  
 ABOVE PCB IS FOR THE P/N 10140949-103LF  
 FOR P/N 10140949-101LF, REMOVE HOLES A3,B1,C3 AND D1  
 FOR P/N 10140949-102LF, REMOVE HOLES A3 AND C3

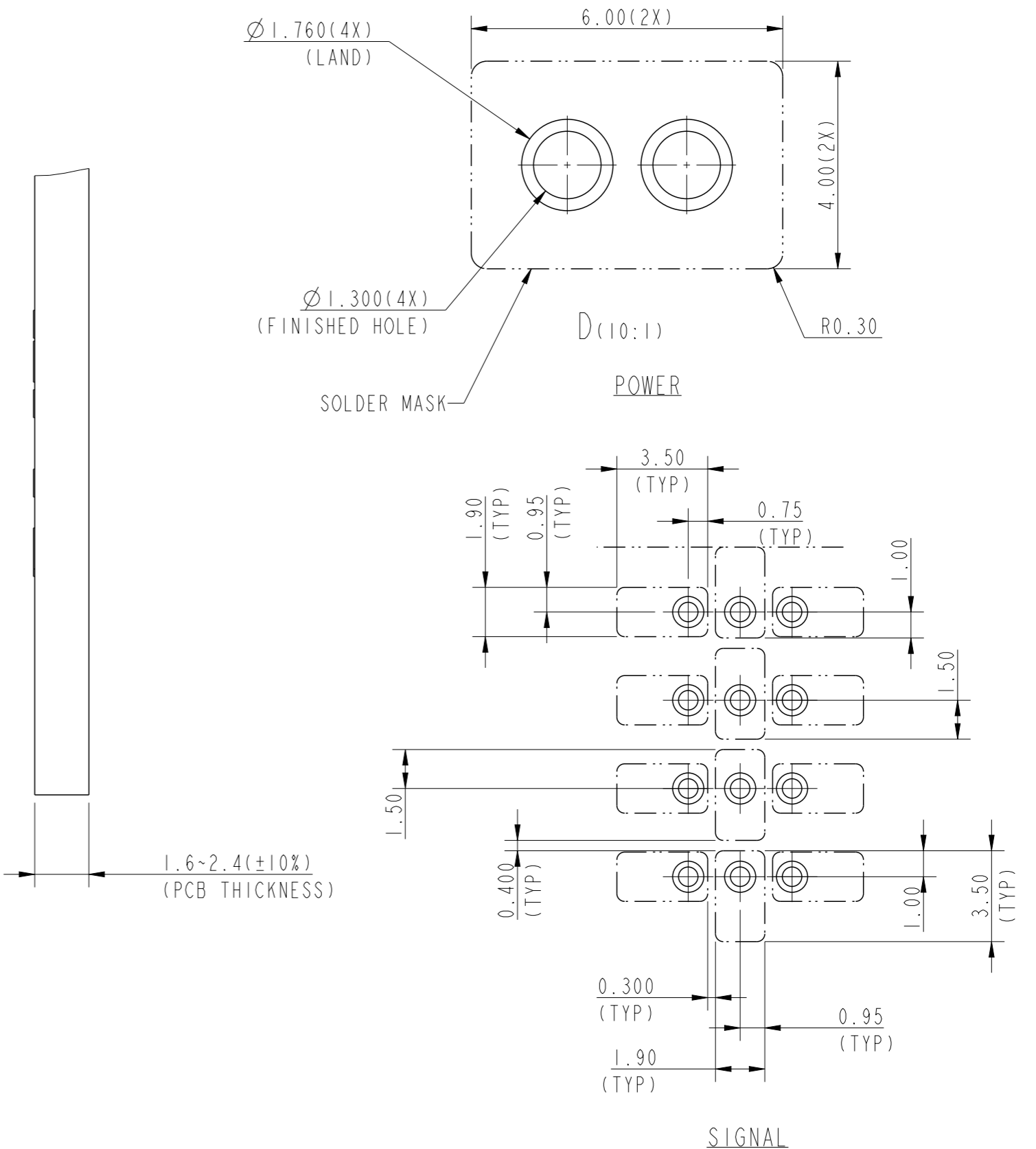
	SIGNAL PTH DETAILS	POWER PTH DETAILS
DRILLED HOLE	0.82-0.87mm	1.37-1.42mm
COPPER PLATING	25-50 $\mu$ m	25-50 $\mu$ m
TIN PLATING	0.8-1.2 $\mu$ m	0.8-1.2 $\mu$ m
FINISHED HOLE DIA	0.70-0.80mm	1.25-1.35mm

spec ref	-
tolerance std	ISO 406 ISO 1101
surface	linear
	angular

TOLERANCES UNLESS OTHERWISE SPECIFIED

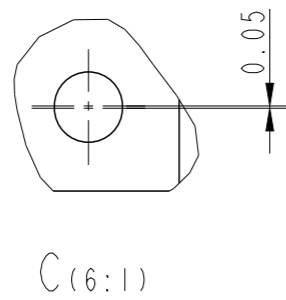
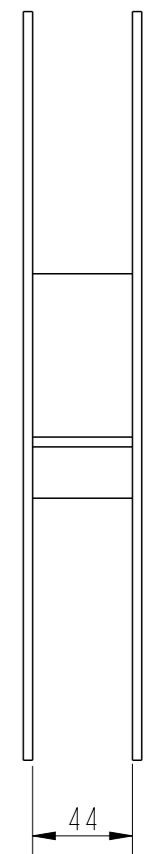
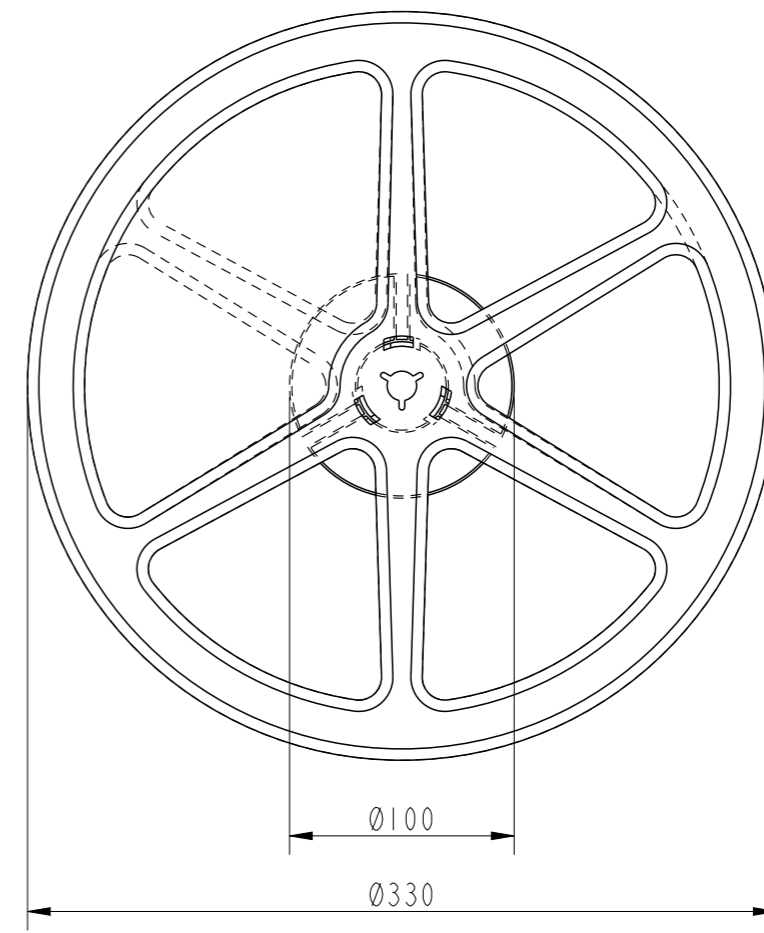
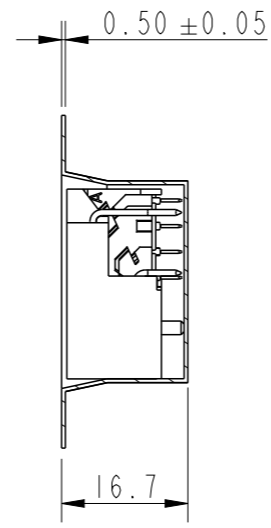
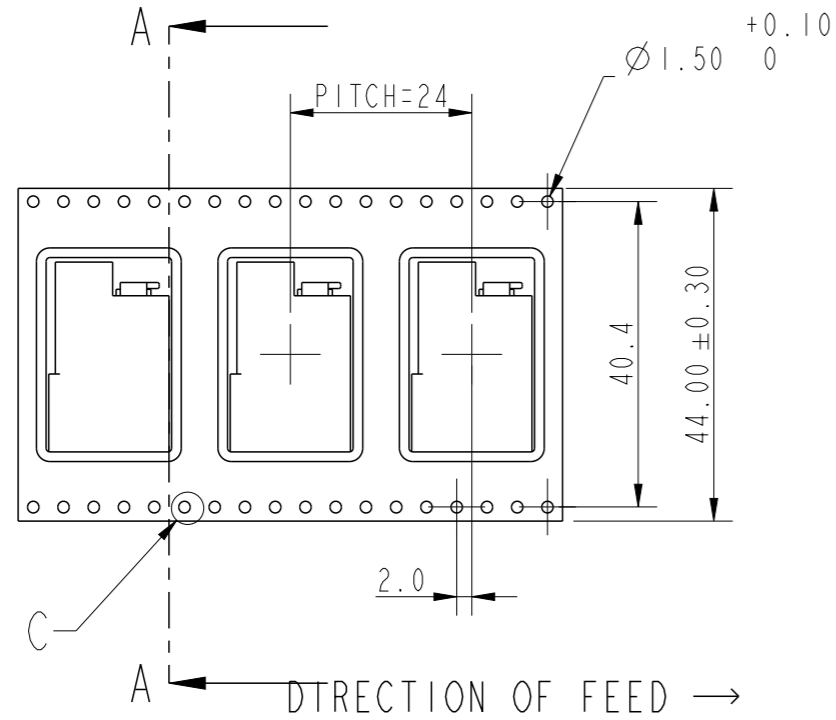
0.X	$\pm 0.3$
0.XX	$\pm 0.10$
0.XXX	$\pm 0.050$
0°	$\pm 2^\circ$

dr	Jibin John	2017/09/26	projection	mm	size	A3	scale	2:1
eng	B T Varghese	2017/10/26			ecn no	ELX-1-28252-1	rel level	Released
chr	-	-			product family			
appr	K-Paul Biju	2017/10/26	Amphenol FCI VERIO HYBRID (SIGNAL&POWER) RA BOARD CONNECTOR SIGNAL & PWR PIP TERMINATION		dwg no	10140949	rev	C
cat. no.			Product - Customer Drw			sheet 2 of 4		



© 2016 AFCI  
 Amphenol FCI

PACKAGING SPECIFICATION

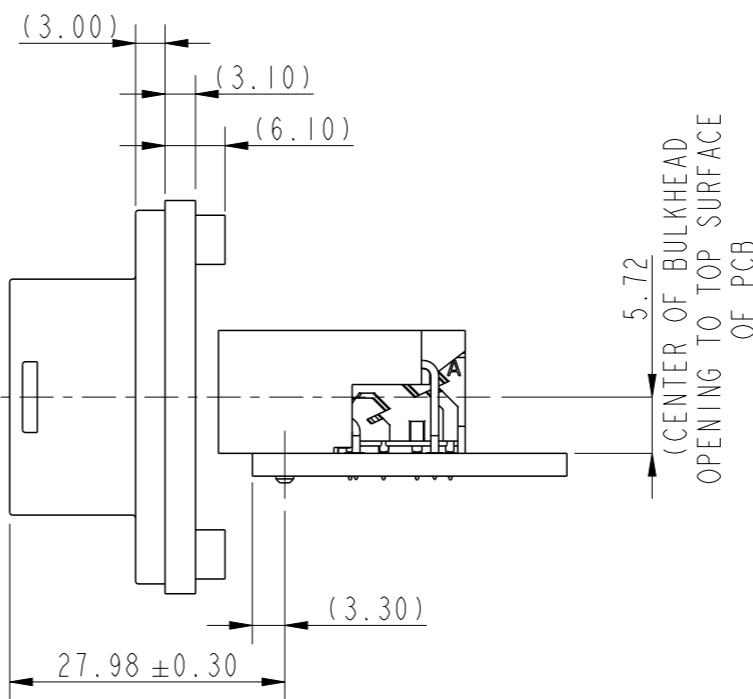
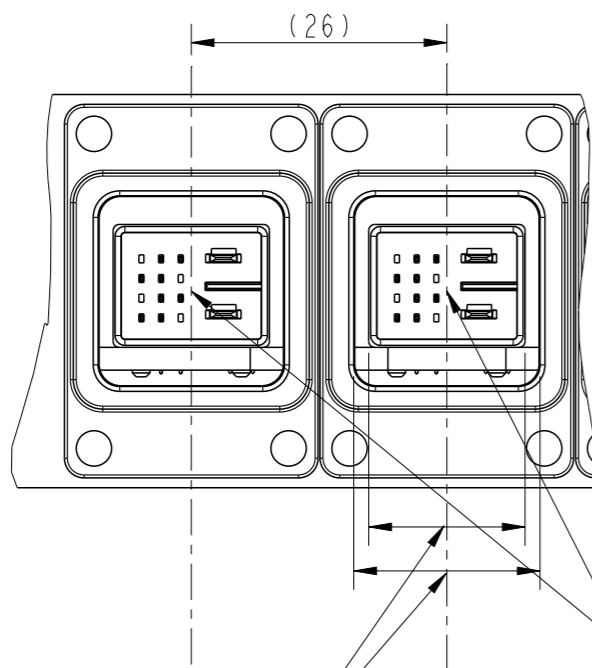
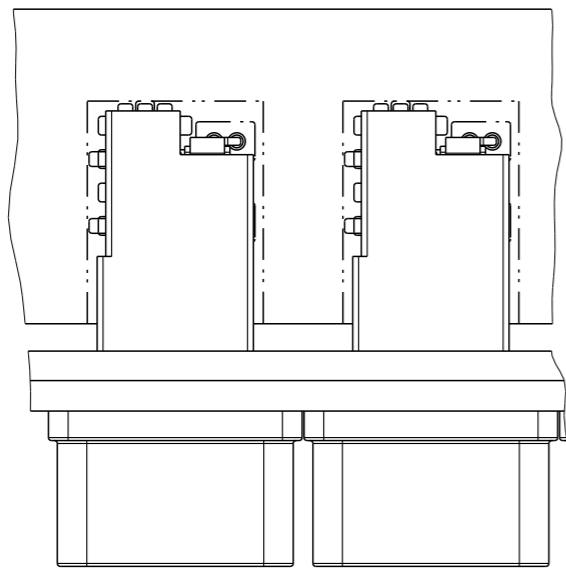


TAPE & REEL PACKING DETAILS

NOTES:

1. PACKAGING DETAILS AS PER EIA-481 STD.
2. MATERIAL : (ANTISTATIC)  
CARRIER TAPE : POLYSTYRENE  
COVER TAPE : POLYSTYRENE

spec ref	-	dr	Jibin John	2017/09/26	projection	mm	size	A3	scale	1:1	
tolerance std	ISO 406 ISO 1101	eng	B T Varghese	2017/10/26			ecn no	ELX-I-28252-1			
TOLERANCES UNLESS OTHERWISE SPECIFIED		chr	-	-			product family	-	rel level	Released	
surface	linear	0.X	±0.3	<b>Amphenol FCI</b>	VERIO HYBRID (SIGNAL&POWER) RA BOARD CONNECTOR		dwg no	10140949		rev	C
		0.XX	±0.10		SIGNAL & PWR PIP TERMINATION						
ISO 1302	angular	0°	±2°		cat. no.	-	Product - Customer Drw	sheet 3 of 4			



NOTES:

1. MATERIAL :
  - RESIN - LCP, GLASS FILLED, FLAME RETARDANT ACC
  - FLAMMABILITY CLASSIFICATION - UL94-V0
  - SIGNAL & POWER CONTACTS - COPPER ALLOY
2. PLATING :
  - GOLD OVER PALLADIUM NICKEL ON CONTACT AREA OF SIGNALS
  - PURE TIN ON TERMINAL AREA OF SIGNALS
  - PURE TIN ON POWER CONTACTS
3. PRODUCT SPECIFICATION (CONNECTOR): GS-12-1427
4. APPLICATION SPECIFICATION: GS-20-0523
5. PACKAGING - TAPE & REEL
6. UNDER PLATING FOR CONTACTS IS 1.27µm NICKEL.
7. PRODUCT WILL WITHSTAND EXPOSURE TO 260° FOR 60 SECONDS IN A CONVECTION, INFRA RED OR VAPOUR PHASE REFLOW OVEN
8. PRODUCT WHERE THE PARTNUMBER ENDS IN LF MEETS EUROPEAN DIRECTIVES AND OTHER COUNTRY REGULATIONS AS DESCRIBED IN GS-47-0004.
9. REFER DRAWING 10140965 FOR BULKHEAD DETAILS

BULKHEAD OPENING CENTRE LINE

± 0.60  
CENTERING OF THE BOARD  
CONNECTOR WITH BULKHEAD  
CAVITY

spec ref	-			dr	Jibin John	2017/09/26	projection	mm	size	A3	scale	1:2
tolerance std	TOLERANCES UNLESS OTHERWISE SPECIFIED			eng	B T Varghese	2017/10/26			ecn no		ELX-I-28252-1	
ISO 406				chr	-	product family			-	rel level		Released
ISO 1101				appr	K-Paul Biju	2017/10/26	VERIO HYBRID (SIGNAL&POWER) RA BOARD CONNECTOR		dwg no		10140949	
surface	linear	0.X	±0.3	<b>Amphenol FCI</b>		SIGNAL & PWR PIP TERMINATION		cat. no. - Product - Customer Drw		sheet 4 of 4		
		0.XX	±0.10									
		0.XXX	±0.050							rev		
ISO 1302	angular	0°	±2°							C		