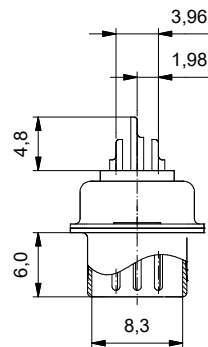
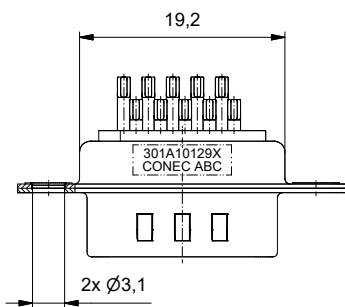
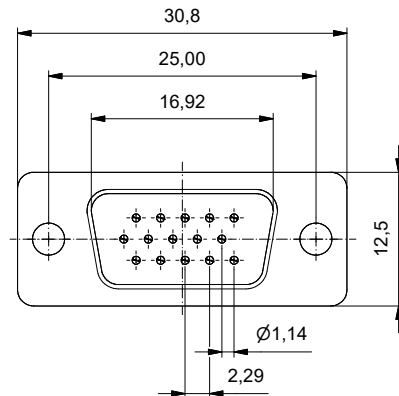


**Technical specification/
Technische Daten:**

Working voltage/ Betriebsspannung:	60 V AC/DC
Insulation resistance/ Isolationswiderstand:	min. 3000 MOhm
Dielectric withstanding voltage/ Spannungsfestigkeit:	1000 V AC / minute
Operating temperature/ Betriebstemperatur:	- 55 °C ... + 105 °C
Current rating/ Strombelastbarkeit:	3 A
Contact Resistance/ Durchgangswiderstand:	max. 15 mOhm

**Materials/
Werkstoffe:**

Contact/ Kontakt:	Cu alloy, Underplate/ 50 µin Nickel Beschichtung: Contact area/ Kontaktbereich:	Gold flash
	Solder tails area/ Lötbereich:	Gold flash
Shell/ Gehäuse:	Steel, Nickel plated	
Rivet, Boardlock/ Befestigungsniet:	Copper alloy	
Insulator/ Isolierkörper:	Thermal plastic UL 94 V-0	



Part no. / Part marked/ Art.-Nr. / Bedruckung:
301A10129X

general tolerance/ Allgemeintoleranz: 0, ±0.5 ,0 ±0.3 ,00 ±0.2	Scale/Maßstab: 2:1		dwg no / Z.-nr.: 16K1A1570	DIN-A3 1 / 1
Index: a Original	Date/Datum: 04.07.2022 Name: Bub drawn/ges: appd./gepr.: 22.08.2022 Lehmenkühler			
RoHS compliant/ konform				

The reproduction, distribution and utilization of this document as well as the communication of its contents to others without express authorization is prohibited. Offenders will be held liable for the payment of damages. For further information on our copyright and liability issues, please refer to our website: www.conec.com.