

NetKey® Category 5e Punchdown Patch Panels

PANDUIT®

DATA SHEET

specifications

Category 5e/Class D punchdown patch panels shall terminate unshielded twisted 4-pair, 22 – 26 AWG, 100 ohm cable and mount to standard TIA/EIA 19" or 23" racks. Punchdown tool shall properly terminate each conductor for optimum performance. Universal T568A and T568B color-coded wiring schemes included.



technical information

Category 5e/Class D performance:	Exceeds ANSI/TIA-568-C.2 Category 5e and ISO 11801 Class D channel requirements at swept frequencies up to 100 MHz Meets ANSI/TIA-568-C.2 and ISO 11801 Category 5e component requirements at swept frequencies up to 100 MHz
FCC compliance:	Complies with ANSI/TIA-1096A (formerly FCC Part 68); contacts plated with 50 microinches of gold
IEC compliance:	Meets IEC 60603-7
PoE compliance:	Supports IEEE 802.3af/802.3at and proposed 802.3bt type 3 and type 4 PoE applications
UL rated:	UL 1863 approved
RoHS compliance:	Compliant
Mounting options:	Mounts to standard EIA 19" or 23" racks (23" requires use of extender brackets); 12-port suitable for wall mount with 89D bracket

key features and benefits

100% performance tested	Confidence that each port delivers specified performance
110 style punchdown termination	Utilizes industry standard termination style and includes wire retention cap
Identification	Write-on areas allow for port and panel identification
Industry standard RJ45 interface	Familiar to end-users; backwards compatible
Angled design (optional)	Facilitates proper bend radius control and minimizes the need for horizontal cable managers

applications

Applications include:

- Ethernet 10BASE-T, 100BASE-T (Fast Ethernet), and 1000BASE-T (Gigabit Ethernet)
- 155 Mb/s ATM, 622 Mb/s ATM, 1.2 Gb/s ATM
- Token Ring 4/16
- Voice over Internet Protocol (VoIP)

NetKey® Network Components

NetKey® Category 5e Angled Punchdown Patch Panels

24-port, 1 RU: NKA5EPPG24Y
48-port, 2 RU: NKA5EPPG48Y

NetKey® Category 5e Flat Punchdown Patch Panels

12-port: NK5EPPG12WY
24-port, 1 RU: NK5EPPG24Y
48-port, 2 RU: NK5EPPG48Y

NetKey® Category 5e Molded Punchdown Patch Panels

24-port, 1 RU: NK5EPP24P
48-port, 2 RU: NK5EPP48P

NetKey® Category 5e Patch Cords

Foot lengths: NK5EPC3*Y
Meter lengths: NK5EPC1M*Y

Termination Tools

Punchdown tool: PDT110‡
Snipping tool: CWST
Stripping tool: CJUST

*For standard lengths other than 3 feet (5, 7, 10, 14 or 20) change the length designation in part number to the desired length. For standard cable colors other than Off White, add suffix BU (Blue), GR (Green), RD (Red) or YL (Yellow) before the Y at the end of the part number. For example, the part number for a blue 5 foot patch cord is NK5EPC5BUY.

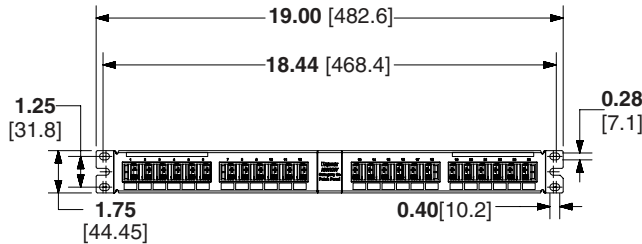
^For standard lengths other than 1 meter (2, 3, 4 or 5) change the length designation in part number to the desired length. For standard cable colors other than Off White, add suffix BU (Blue), GR (Green), RD (Red) or YL (Yellow) before the Y at the end of the part number. For example, the part number for a blue 5 meter patch cord is NK5EPC5MBUY.

‡Terminates NetKey® Punchdown Patch Panels.

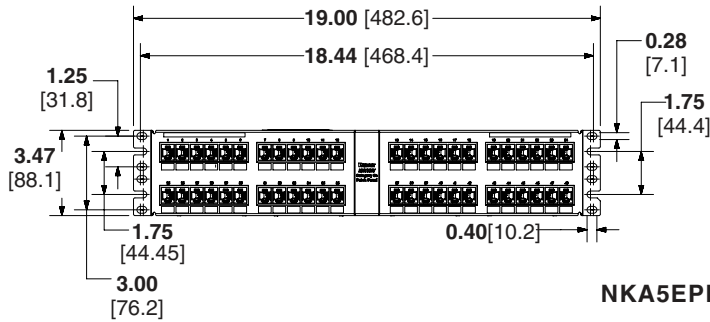
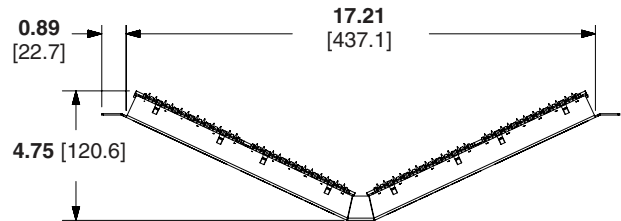
NetKey® Category 5e Punchdown Patch Panels

NetKey® Category 5e Electrical Performance

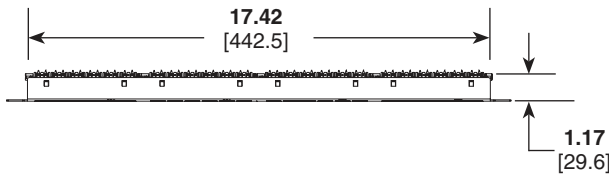
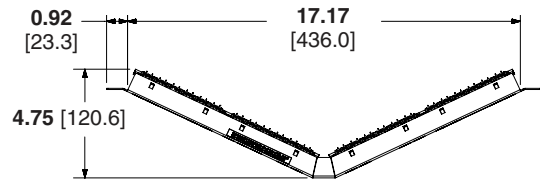
Parameters	dB @ 250 MHz
NEXT	> 43.0
FEXT	> 35.1
Attenuation	> 0.40
Return Loss	> 20.0



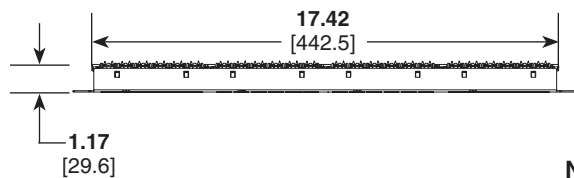
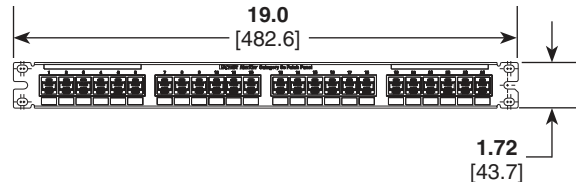
NKA5EPPG24Y



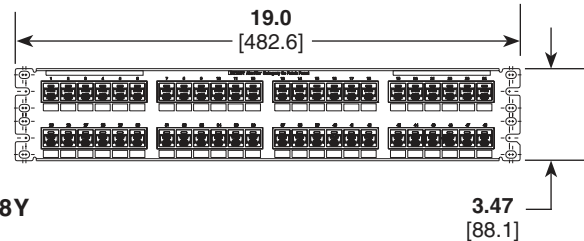
NKA5EPPG48Y



NK5EPPG24Y



NK5EPPG48Y



Dimensions are in inches [Dimensions in brackets are metric]

WORLDWIDE SUBSIDIARIES AND SALES OFFICES

PANDUIT CANADA
Markham, Ontario
cs-cdn@panduit.com
Phone: 800.777.3300

PANDUIT EUROPE LTD.
London, UK
cs-emea@panduit.com
Phone: 44.20.8601.7200

PANDUIT SINGAPORE PTE. LTD.
Republic of Singapore
cs-ap@panduit.com
Phone: 65.6305.7575

PANDUIT JAPAN
Tokyo, Japan
cs-japan@panduit.com
Phone: 81.3.6863.6000

PANDUIT LATIN AMERICA
Guadalajara, Mexico
cs-la@panduit.com
Phone: 52.33.3777.6000

PANDUIT AUSTRALIA PTY. LTD.
Victoria, Australia
cs-aus@panduit.com
Phone: 61.3.9794.9020

For a copy of Panduit product warranties, log on to www.panduit.com/warranty

For more information

Visit us at www.panduit.com

Contact Customer Service by email: cs@panduit.com
or by phone: 800.777.3300

©2015 Panduit Corp.
ALL RIGHTS RESERVED.

NKDS42--WW-ENG

5/2015