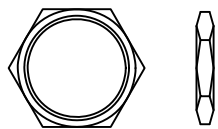
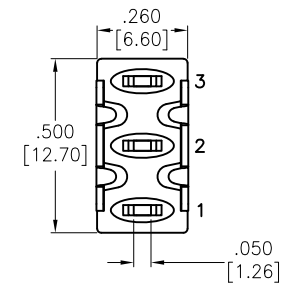
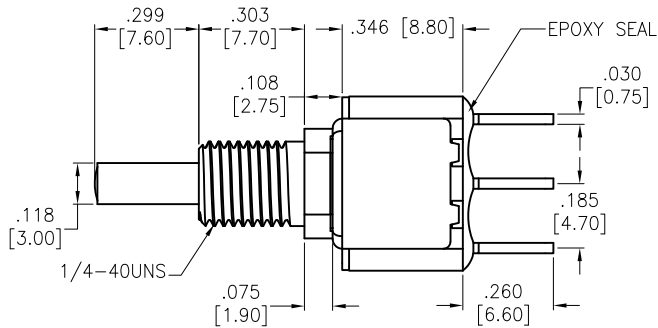
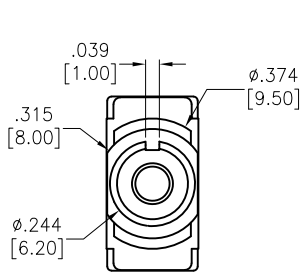
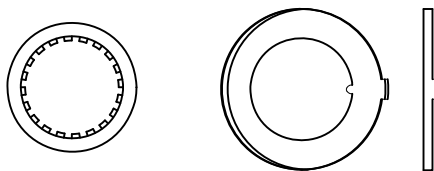


APPROVED: _____
 DATE: _____ TITLE: _____

Rev	AWO #	Description	Date	Appr
-		RELEASED	3/4/21	



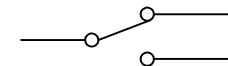
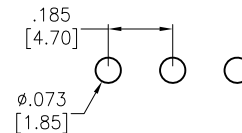
HEX NUT



LOCK WASHER

ANTI ROTATIONAL WASHER

INCLUDED HARDWARE



CIRCUIT DIAGRAM
(SPDT) ON-ON

SPECIFICATIONS:

Material:
 Movable Contact: Copper Alloy, Silver Plated
 Terminal: Copper Alloy, Silver Plated
 Electrical:
 Rating:
 6 Amps with resistive load @ 125VAC or 28VDC
 3 Amps with resistive load @ 250VAC
 Contact resistance: 10 mΩ max
 Insulation resistance: 1,000 Mohms min
 Dielectric withstanding voltage: 1,500V RMS @Sea level
 Temperature Rating:
 Operating temperature: -30°C to +85°C
 Environmental:
 Lead free, RoHS compliant



UNLESS OTHERWISE SPECIFIED ALL DIMENSIONS ARE INCHES [MM] TOLERANCES: EXCEPT AS NOTED INCHES HOLES .X ± .10 Ø.X ± .10 .XX ± .020 Ø.XX ± .015 .XXX ± .015 Ø.XXX ± .010		ADAM TECH 909 Rahway Avenue, Union, NJ 07083 Phone: 908-687-5000 Fax: 908-687-5710	
APPROVALS		DATE	
DRAWN	WX	3/4/21	
CHECKED	AC	3/4/21	
APPROVED			
TITLE		PUSHBUTTON SWITCH, ON-ON, SPDT COPPER ALLOY SILVER PLATED, PCB TYPE	
SIZE	PART NO.	REV.	
X	SW-PB8-AA00A2QE-3	-	
REF:	S00198T	SCALE:	NTS
		SHEET 1 OF 1	