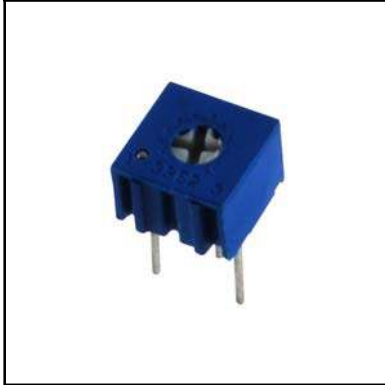


## Features

- Economically Priced
- Replaces the Spectrol 76P Series
- RoHS compliant
- Industrial / Sealed
- IC style pins for easier board insertion

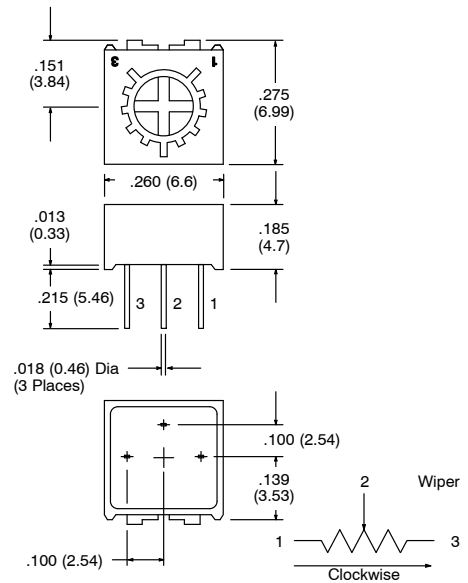


| NTE Part No. | Equivalent Spectrol No. | Value (Ohms) | Diag No. |
|--------------|-------------------------|--------------|----------|
| 500E-0346    | 76P-102                 | 1K           | T13e     |
| 500E-0348    | 76P-502                 | 5K           | T13e     |
| 500E-0349    | T73YP-10K-10-TU50       | 10K          | T13e     |
| 500E-0352    | 76P-104                 | 100K         | T13e     |
| 500E-0353    | 76P-204                 | 200K         | T13e     |
| 500E-0355    | T73YP-1M-10-TU50        | 1M           | T13e     |

# Trimmer, 1/4" Square

## Trimmer – Single Turn Cermet, Top Adjust

### T13a



## Specifications

### Electrical

- Effective Travel:** 250° nom
- Resistance Range:** 1K $\Omega$  to 1 Meg  $\Omega$
- Resistance Tolerance:**  $\pm 10\%$
- Absolute Minimum Resistance:**  $\leq 1\%$  or 2 $\Omega$
- Temperature Coefficient:**  $\pm 100$  ppm/ $^{\circ}$ C.
- Power Rating:** 1/2 Watt @ 70 $^{\circ}$ C derated to 0 Watts @ 125 $^{\circ}$ C
- Withstanding Voltage:** 700V<sub>AC</sub>
- Insulation Resistance:**  $\geq 1G \Omega$  @ 100V<sub>AC</sub>
- Contact Resistance Variation:**  $\leq 1\%$  or 3 $\Omega$

### Mechanical

- Starting Torque:**  $\leq 35$  mN  $\cdot$  m
- Rotation Life:** 200 cycles min with max change of  $\leq 4\%$  in total resistance
- Resistance Element:** Cermet

### Environmental

- Operating Temperature:** -55 $^{\circ}$ C to +125 $^{\circ}$ C
- Electrical Endurance:** 1000 hours