

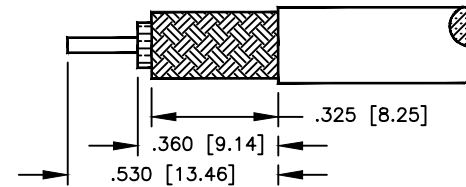
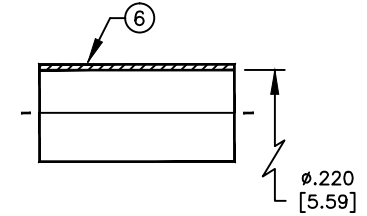
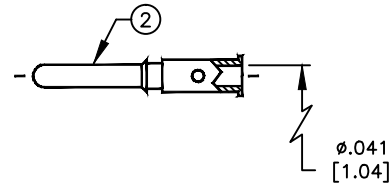
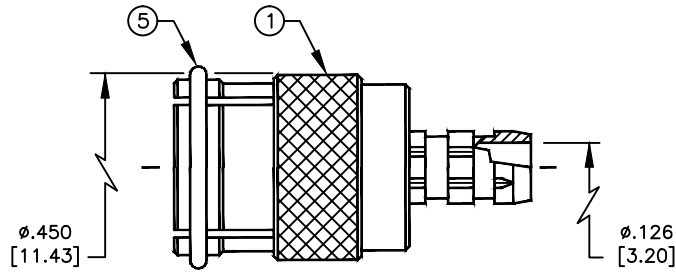
# SPECIFICATION CONTROL DRAWING

THIS DRAWING CONTAINS INFORMATION PROPRIETARY TO RF INDUSTRIES, LTD. ANY UNAUTHORIZED USE OF THIS DRAWING IS EXPRESSLY PROHIBITED. ANY VIOLATION IS PUNISHABLE UNDER U.S. COPYRIGHT LAWS.

REV	DESCRIPTION	DWN	DATE	APPROVED
C	ENGINEERING RELEASE	PB	7/15/92	C. JONES
D	CHG BODY, DIE, PIN / REMOVE OPT FERRULE STUD	KMM	9/10/92	J. BENZ
F	ADD DIELECTRIC DIMENSIONS / STANDARDIZE	KMM	7/11/94	R. RICE
G	CHG BODY ID AT SLOTS / CHANGE STRIPPING	KMM	2/1/99	R. RICE

ALL DIMENSIONS ARE REFERENCE ONLY

000000



SUGGESTED STRIPPING INSTRUCTIONS  
SUGGESTED CRIMP DIE: .068 & .213

## SPECIFICATIONS:

IMPEDANCE: 50 OHMS  
 WORKING VOLTAGE: 335 VRMS @ SEA LEVEL  
 FREQUENCY RANGE: 0-2.5 GHz  
 INSERTION LOSS:  $\leq$  -.2 dB @ 2 GHz  
 VSWR MAX: 1.25:1 @ 2 GHz  
 FOR RG-58, 58A, 58C, 141, 141A, 400/U, BELDEN 8240, 8262, 9201, 9203, 9310, 9311, COMM/SCOPE 0268 & CUSHCRAFT ULTRALINK TL92463E

DIMENSIONS ARE IN INCHES AND [MILLIMETERS]

UNLESS OTHERWISE NOTED TOLERANCES ARE:

DECIMALS      DIAMETER

*RF*connectors

DIVISION OF RF INDUSTRIES, LTD.

7610 MIRAMAR RD  
 SAN DIEGO, CA 92126  
 (619)549-6340  
 (619)549-6345 FAX

## RFU-600-5

MINI UHF MALE QUICK DISCONNECT CRIMP

ITEM	DESCRIPTION	QTY	MATERIAL	FINISH
6	FERRULE [FER-103]	1	BRASS	NICKEL
5	RETAINING RING	1	SK-5	NICKEL
4	PRESS FIT WASHER	1	BRASS	NICKEL
3	DIELECTRIC	1	DELTRIN	NONE
2	PIN [PIN-311-6]	1	BRASS	GOLD
1	BODY	1	BRASS	NICKEL

DRAWN K. MAXWELL	2/1/99
CHECKED	
ORJ DRAWN C. JONES	7/26/91
APPROVALS	DATE

SIZE <b>A</b>	CABLE GROUP <b>C</b>	DWG NO. <b>7640</b>	REV <b>G</b>
SCALE: 2:1		CAD FILE 13ARC B	SHEET 1 OF 1