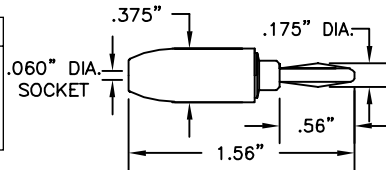


BANANA & PIN PLUG ADAPTERS

.060" (1.524mm) SOCKET IN STANDARD BANANA PLUG

| Part No. | Description |
|----------|--|
| 8011 | .060" (1.524mm) Socket in Std. Banana Plug |

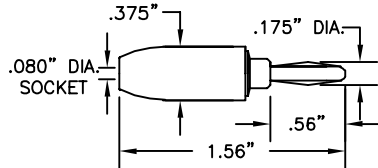


Construction: Nylon handle. Nickel-plated brass frame with phosphor bronze .060" contact socket spring. Banana plug is nickel silver.

Colors: Available in 10 Colors. See inside back cover for details.

.080" (2.03mm) SOCKET IN STANDARD BANANA PLUG

| Part No. | Description |
|----------|---|
| 8012 | .080" (2.03mm) Socket in Std. Banana Plug |

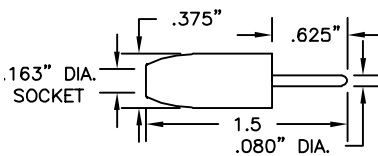


Construction: Nylon handle. Brass banana plug frame with a nickel silver contact spring. .080" socket is brass frame with phosphor bronze spring, silver-plated.

Colors: Available in 10 Colors. See inside back cover for details

STANDARD BANANA SOCKET TO .080" (2.03mm) PIN

| Part No. | Description |
|----------|--|
| 8018 | Std. Banana Socket to .080" (2.03mm) Pin |

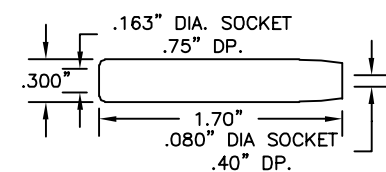


Construction: Nylon handle. One piece nickel-plated brass frame.

Colors: Available in 10 Colors. See inside back cover for details.

STANDARD BANANA TO .080" (2.03mm) TIP SOCKET

| Part No. | Description |
|----------|--|
| 8031 | Std. Banana to .080" (2.03mm) Tip Socket |

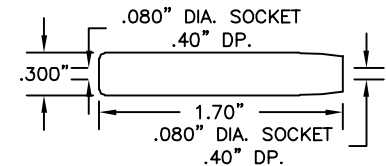


Construction: Housing is molded nylon. Banana socket and .080" socket frames are nickel-plated brass. .080" contact is silver-plated beryllium copper.

Colors: Available in red and black.

STANDARD .080" (2.03mm) TIP SOCKET TO STANDARD .080" (2.03mm) TIP SOCKET

| Part No. | Description |
|----------|---|
| 8029 | .080" (2.03mm) to .080" (2.03mm) Splice |



Construction: Housing is molded nylon. .080" sockets are machined brass and nickel copper. Spring contact is silver-plated beryllium copper.

Colors: Available in red and black.

.060" (1.524mm) SOCKET TO .080" (2.03mm) TIP SOCKET

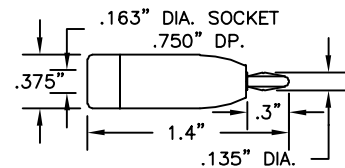
| Part No. | Description |
|----------|---|
| 8046 | .060" (1.524mm) Socket to .080" (2.03mm) Tip Socket |

Construction: Housing is molded nylon. .080" contact spring is silver-plated Be Cu. .060" socket is machined nickel copper, both sockets are nickel-plated.

Colors: Available in red and black.

STANDARD BANANA SOCKET TO MINIATURE BANANA PLUG

| Part No. | Description |
|----------|--|
| 8023 | Std. Banana Socket to Mini Banana Plug |

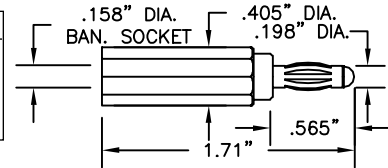


Construction: Nylon handle. Mini banana and standard banana sockets are nickel-plated brass. Mini banana plug spring is nickel silver.

Colors: Available in 10 colors. See inside back cover for details.

STANDARD BANANA PLUG TO BANANA SOCKET, ACCEPTS SHROUDED BANANA PLUGS

| Part No. | Description |
|----------|---------------------------------------|
| 9384 | Standard Banana Plug to Banana Socket |

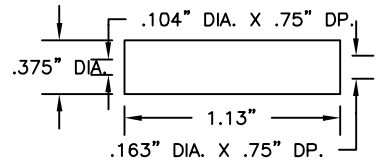


Construction: Nylon handle. Banana plug and socket are a one piece brass frame with beryllium copper contact spring, both nickel plated.

Colors: Red, Black, Yellow, Green, Blue and White.

STANDARD BANANA SOCKET TO MINIATURE BANANA SOCKET

| Part No. | Description |
|----------|--|
| 8032 | Std. Banana Socket to Mini Banana Socket |

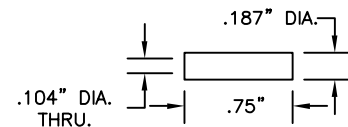


Construction: Insulator is extruded PVC tubing. Contacts are tin-plated music wire.

Colors: Available in red and black.

MINIATURE BANANA SOCKET TO MINIATURE BANANA SOCKET

| Part No. | Description |
|----------|--|
| 8030 | Mini Banana Socket to Mini Banana Socket |

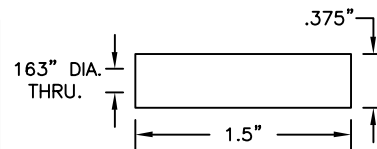


Construction: Insulator is heat shrink tubing. Contact is tin-plated music wire.

Colors: Available in red and black.

STANDARD BANANA SOCKET TO STANDARD BANANA SOCKET

| Part No. | Description |
|----------|--|
| 8033 | Std. Banana Socket to Std. Banana Socket |



Construction: Insulator is extruded PVC tubing. Contacts are tin-plated music wire.

Colors: Available in red and black.