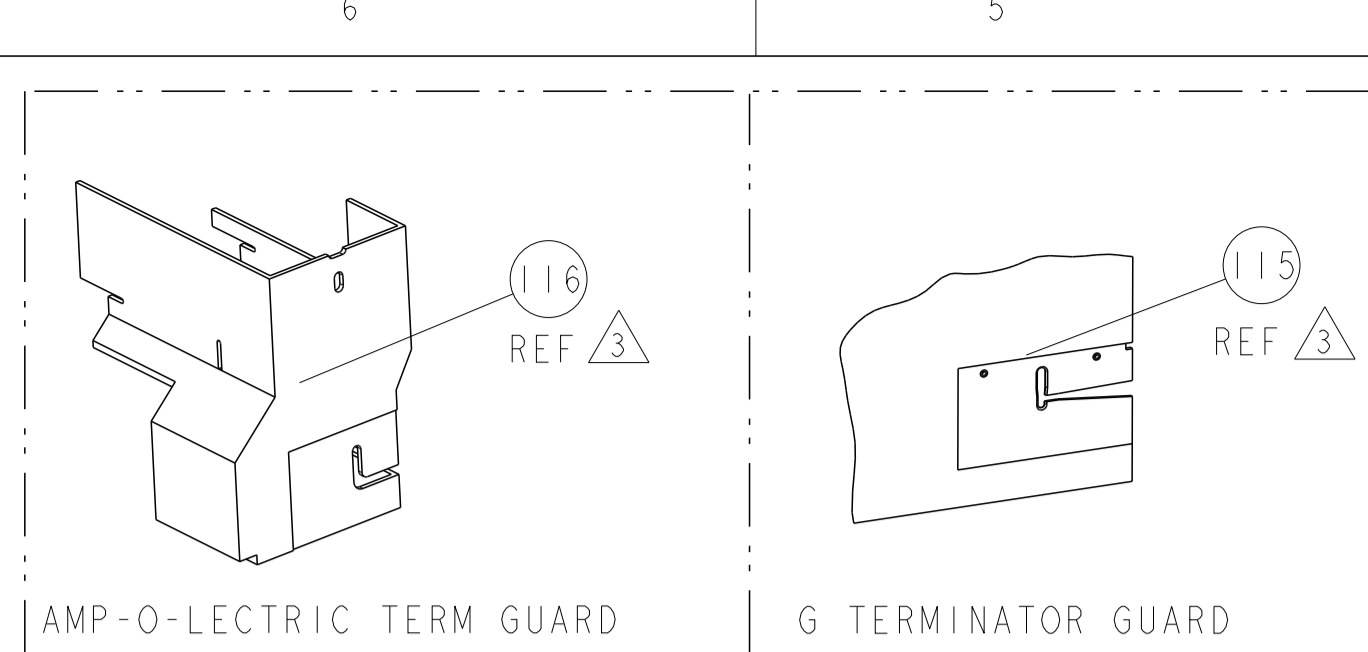


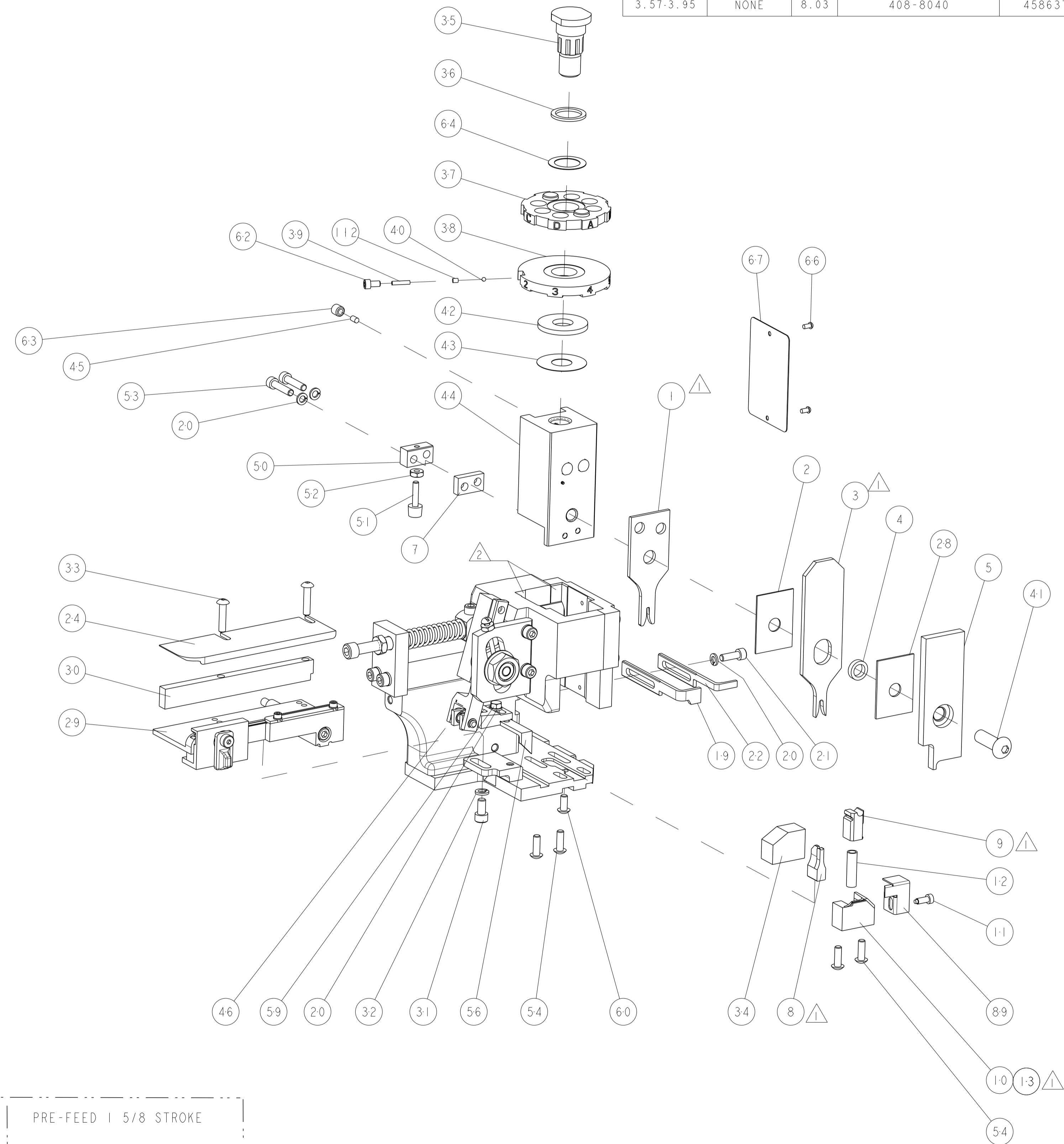
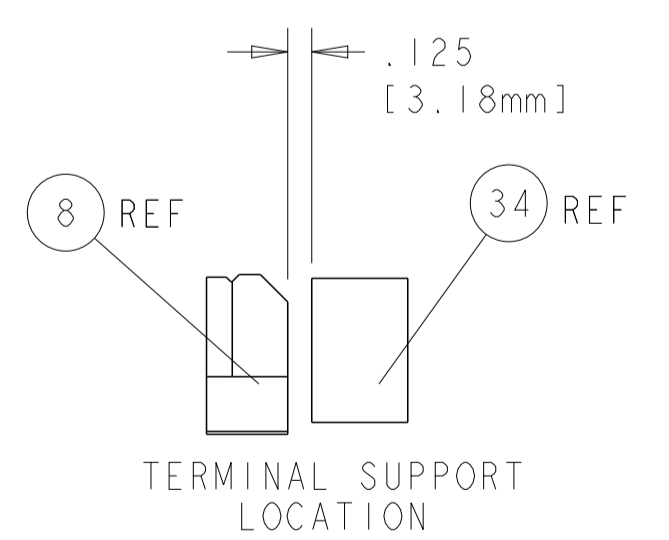
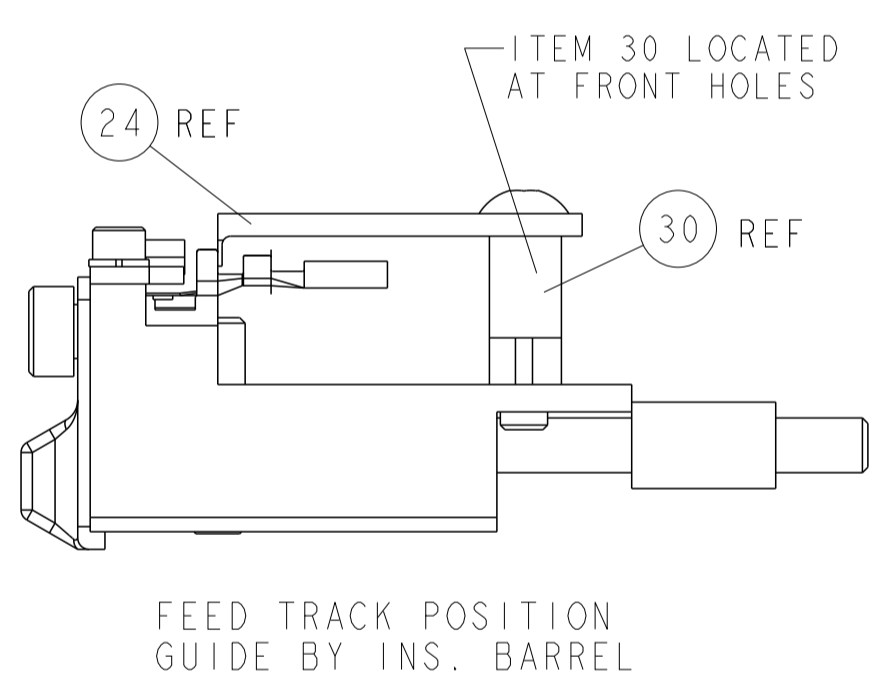
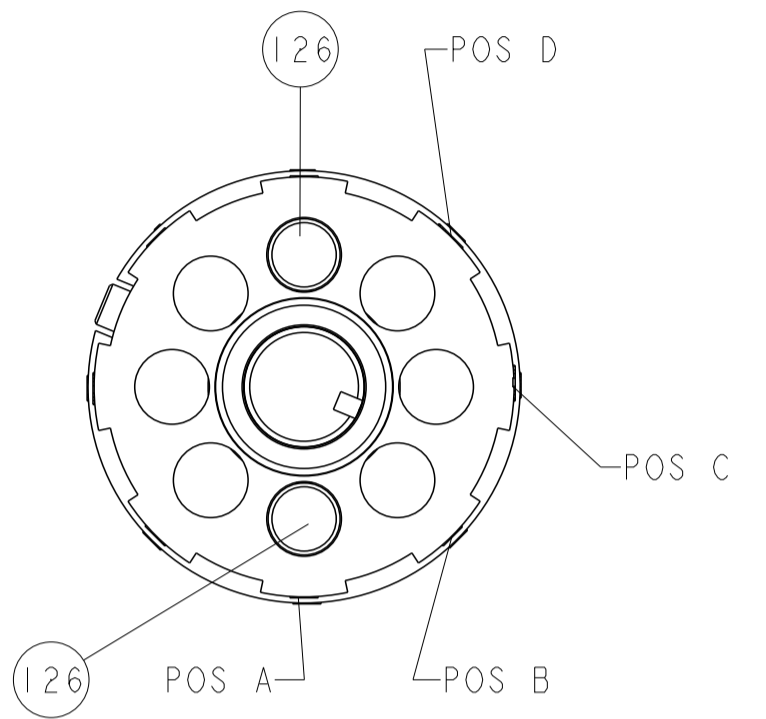
PART NUMBER	REV	FIRST USED	POWER UNIT	FEED TYPE	DESCRIPTION
1852822-1	A	122500-1	LEADMAKER	POST FEED	CUTS CARRIER
1852822-2	A	565435-5	BENCH MODEL K	PRE FEED	CUTS CARRIER
1852822-3	A	354500-1	BENCH MODEL G	PRE FEED	CUTS CARRIER
1852822-6	A	122500-1	LEADMAKER	POST FEED	CONTINUOUS CARRIER
7-1852822-7	A	-	-	-	SPARE PARTS



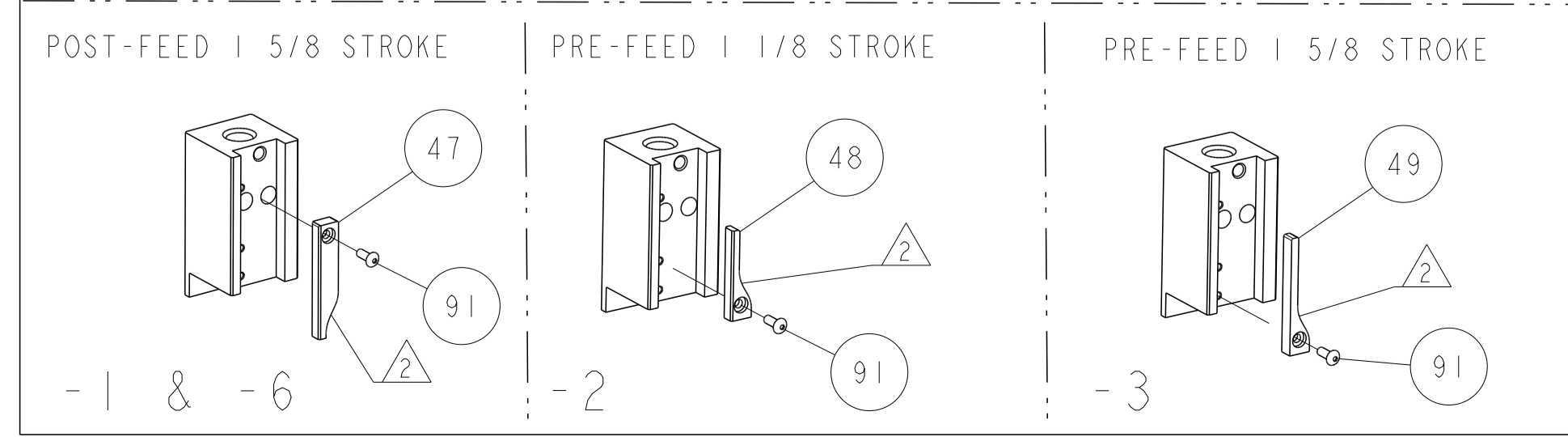
TERMINAL NAME: TERMINAL		KOSTAL TERMINAL - TE CRIMP SPECS	
TE PN	KOSTAL		
1949900-1	22124492690		
-	-	PAD LTR	CRIMP HEIGHT
-	-	A	1.19mm ± .05 / .05 [ .047 ± .002 / -.002 ]
-	-	B	-
-	-	C	-
-	-	D	-
-	-	CRIMP	SIZE
-	-	WIRE	1.57mm [ .062 ]
-	-	INSUL	2.79mm [ .110 ]
WIRE STRIP LENGTH	TERM APPL SPEC	FEED	APPLICATOR INSTRUCTIONS
3.57-3.95	NONE	8.03	408-8040
			SET UP GAGE
			458637-1

LOC	DIST	REVISIONS			
A	66	REV	DATE	BY	APPV
		A1	17AUG2015	MR	JDG

- △ RECOMMENDED SPARE PARTS
- △ GREASE LIGHTLY
- △ GUARD MUST BE IN PLACE WHEN OPERATING APPLICATOR IN A BENCH MACHINE
- △ CUT TO LENGTH AT ASSY



3	-	2	2	2	2	-	3-354779-0	PIN, WIRE DISC, .3140	126
3	-	-	-	REF	-	-	455749-1	GUARD WINDOW	116
-	-	-	-	REF	-	-	679532-1	INSERT, GUARD	115
-	-	1	1	1	1	-	690603-1	SPRING ASSIST AMP-O-MATOR APPLICATOR	112
-	-	1	1	1	1	-	1-21002-7	SCR, BTN SKT HD CAP 6-32 X .375	91
-	-	1	1	1	1	-	318563-1	GUARD, FRONT CHIP	89
-	-	1	1	1	1	-	4088040	SF APPL INST 408-8040	72
-	-	1	1	1	1	-	217238-1	GENERAL INSTRUCTION PKG	71
-	-	1	1	1	1	-	461264-1	PLATE, IDENTIFICATION	67
-	-	2	2	2	2	-	21017-2	SCREW, DRIVE	66
-	-	1	1	1	1	-	986950-1	WASHER, FLAT PRECISION	64
-	-	1	1	1	1	-	21009-2	SCR, SET, SELF LOCKING 1/4-20 X .250	63
-	-	1	1	1	1	-	23030-1	SCR, SKT HD CAP 6-32 X .25	62
-	-	1	1	1	1	-	22733-8	SCR, BHSC, SELF-LOCKING, 8-32 X .375	60
-	-	1	1	1	1	-	2-22603-0	SCR, HEX HD CAP 8-32 X .312	59
-	-	1	1	1	1	-	458537-2	PAWL, FEED	56
4	4	4	4	4	4	-	2-21002-2	SCR, BTN SKT HD CAP 8-32 X .500	54
-	2	2	2	2	2	-	2-21000-9	SCR, SKT HD CAP 8-32 X .750	53
-	1	1	1	1	1	-	21018-5	NUT, HEX, REG 6-32	52
-	1	1	1	1	1	-	811242-2	BUMPER, HOLD DOWN	51
-	1	1	1	1	1	-	690753-1	SPACER, TONKER	50
-	-	-	-	-	-	-	690602-6	CAM, PRE FEED, 1 5/8	49
-	-	-	-	-	-	-	690602-5	CAM, PRE FEED, 1 1/8	48
-	1	-	-	-	-	-	690501-4	CAM, POST-FEED 1 5/8	47
-	1	1	1	1	1	-	459456-1	APPL. BASIC SUB ASSY (SIDE WISE MOCA)	46
-	1	1	1	1	1	-	690191-1	PLUG, NYLON	45
-	1	1	1	1	1	-	455673-1	RAM, SIDE FEED	44
-	1	1	1	1	1	-	690125-1	SHIM SUB-ASSY	43
-	1	1	1	1	1	-	690124-1	WASHER, RAM (.115)	42
-	1	1	1	1	1	-	7-21002-9	SCR, BTN SKT HD CAP 5/16-24 X 1.00	41
-	1	1	1	1	1	-	23241-6	BALL, STEEL	40
-	1	1	1	1	1	-	690170-1	SPRING, COMPRESSION	39
-	1	1	1	1	1	-	690142-5	DISC, INSULATION	38
-	1	1	1	1	1	-	354777-1	WIRE DISC, ASSEMBLY	37
-	1	1	1	1	1	-	22480-5	SPRING, COMPRESSION	36
-	1	1	1	1	1	-	690212-1	POST, RAM	35
-	1	1	1	1	1	-	690786-6	TERMINAL SUPPORT	34
-	2	2	2	2	2	-	2-21002-4	SCR, BTN SKT HD CAP 8-32 X .750	33
-	1	1	1	1	1	-	21024-5	WASHER, SPRG LOCK, REG NO 10	32
-	1	1	1	1	1	-	3-21000-4	SCR, SKT HD CAP 10-32 X .375	31
-	1	1	1	1	1	-	1320908-8	SPACER, STRIP GUIDE	30
-	1	1	1	1	1	-	1633091-3	ASSEMBLY, STRIP GUIDE	29
-	1	1	1	1	1	-	1-455888-0	SPACER, CRIMPER	28
-	1	1	1	1	1	-	1320928-1	STRIP GUIDE	24
-	1	-	-	-	-	-	690472-2	STRIPPER	22
-	1	1	1	1	1	-	2-21000-7	SCR, SKT HD CAP 8-32 X .500	21
-	4	4	4	4	4	-	21024-4	WASHER, SPRG LOCK, REG NO 8	20
-	-	1	1	-	-	-	691353-1	STRIPPER	19
1	-	-	-	-	-	-	679625-1	SHEAR HOLDER, FRONT (NO CUT)	13
-	1	1	1	1	1	-	3-22280-3	SPRING, COMPRESSION	12
-	1	1	1	1	1	-	690461-1	STOP, SHEAR	11
-	-	-	-	-	-	-	690459-1	SHEAR HOLDER, FRONT	10
1	1	1	1	1	1	-	462006-1	FLOATING SHEAR, FRONT	9
1	1	1	1	1	1	-	4-1633107-5	ANVIL, COMBINATION .062	8
-	1	1	1	1	1	-	240641-3	SPACER	7
-	-	-	-	-	-	-	-	-	6
-	1	1	1	1	1	-	2-455889-0	DEPRESSOR, SHEAR	5
-	1	1	1	1	1	-	238011-2	BLOCK, CRIMPER SPACER	4
1	1	1	1	1	1	-	456135-7	CRIMPER, INSULATION O PREMIUM	3
-	1	1	1	1	1	-	455888-7	SPACER, CRIMPER	2
1	1	1	1	1	1	-	3-456403-4	CRIMPER, WIRE PREMIUM	1



DIMENSIONS:	TOLERANCES UNLESS OTHERWISE SPECIFIED:	APPROVED:	DATE:	DESCRIPTION:	ITEM NO:
INCHES	0 PLC ±.005 1 PLC ±.005 2 PLC ±.005 3 PLC ±.005 4 PLC ±.005	W. HUANG	17FEB2009	SIDE FEED HDM APPLICATOR	1
MATERIAL:	FINISH:	APPROVED:	DATE:	DESCRIPTION:	ITEM NO:
-	-	N. DEMING	17FEB2009	SIDE FEED HDM APPLICATOR	1
Customer Drawing		SCALE:	SHEET:	OF:	REV:
-		3:5	1	1	A1

CUSTOMER VIEWABLE ASSEMBLY