



**FEATURES**

- Rugged design
- Protection against vandalism
- Best quality and long lifetime due to high-quality materials
- Reliable tactile feedback on input
- Excellent price-performance ratio
- Versatile colour design and lettering

Type		MCS 19	MCS 30	SSM
<b>Electrical Data</b>				
Switching Voltage min.	[VDC]	4	4	3
Switching Voltage max.	[VDC]	48	48	50
Switching Current max.	[mA]	125	125	50
Rated Breaking Capacity	[W]	1.2	1.2	2.5
Lifetime (at Rated Breaking Capacity)	[Mio.]	1	1	5
Initial Contact Resistance new	[mΩ]	< 50	< 50	
Initial Contact Resistance (after Lifetime)	[mΩ]	< 150	< 150	
Insulation Resistance	[MΩ]	> 100	> 100	
Duration of Bounce	[ms]	< 5	< 5	< 1
Supply Voltage Ring Illumination	[VDC]	24	24	
LED Data Point Illumination		see page 39		
Switching Function		N.O.	N.O.	N.O.
<b>Mechanical Data</b>				
Actuating Force	[N]	3.7	3.7	2.8
Actuating Travel	[mm]	0.4	0.4	0.3
Lifetime mechanical	[mill.]	1	1	5
Starting Torque (with Sealing Ring)	[Nm]	0.4		
IK Protection Class (Shock Protection)	[IK]	IK 05	IK 05	IK 07
<b>Climatical Data</b>				
Operating Temperature	[°C]	-20 to +60	-25 to +60	-25 to +85
Storage Temperature	[°C]	-20 to +60	-25 to +60	-25 to +85
IP Protection Class Front Side	[IP]	IP 40	IP 40	IP 65
IP Protection Class Contact Area	[IP]	IP 65	IP 65	IP 65

In addition to the standard types, additional versions as well as laser lettering are available on request. Starting with catalogue page 36 you will find an overview of the various designs.



MCS 30 RI



SSM 30

**Characteristics**

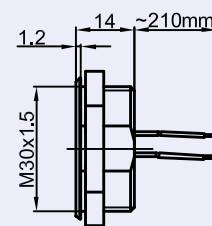
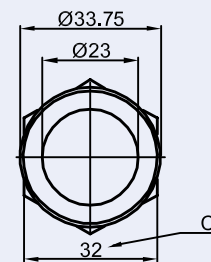
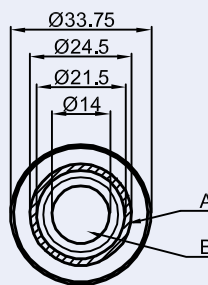
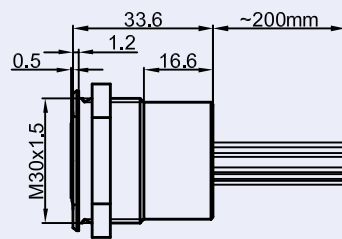
<b>Mounting Diameter</b> [mm]	30	30
<b>Housing Material</b>	Alu. anodised	Stainless Steel
<b>Actuator Material</b>	Zinc Diecasting	Stainless Steel
<b>Illumination</b>	Ring Illumination	non-illuminated
<b>Accessories</b>	All switches are supplied with nut and o-ring seal.	

**Order Number**

<b>Terminal</b>		
<b>Wire</b>	o	1245.3122.22100000
<b>Illumination</b>		
red	1241.6400	
green	1241.6401	
yellow	1241.6402	
blue	1241.6404	
red / green	1241.6403	

**Drawing**

- A Illumination Area
- B Actuating Area
- C Width Across Flats
- E Pins
- F Pins with Soldering Aid
- G Clip for Pins



o Standard version

SWITCHES WITH STROKE