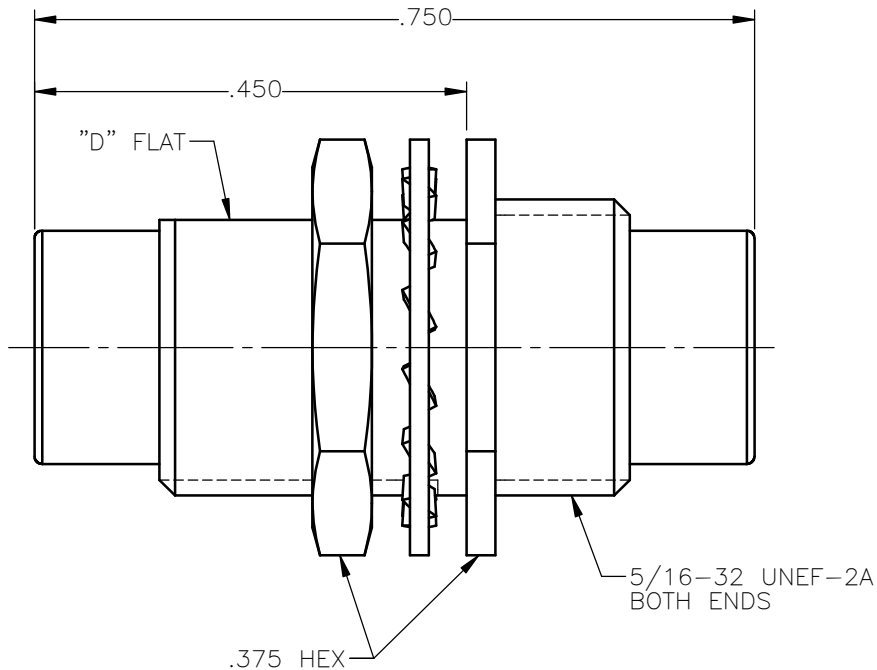
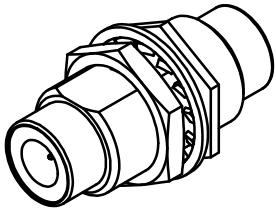
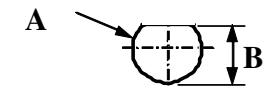


REVISIONS			
REV.	DESCRIPTION	DATE	APPROVED
A	INITIAL RELEASE	07/05/16	D.N.



PANEL CUT OUT



	inch	
	Maxi	mini
A	.333	.327
B	.300	.294



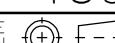
NOTES:

MATERIALS:

1. INSULATOR = VIRGIN WHITE TEFLON PER ASTM D1710, GRADE 1, TYPE I, CLASS "B".
2. LOCKWASHER = PHOSPHOR BRONZE, COPPER ALLOY C52180.
3. ALL OTHER METAL PARTS = BRASS PER ASTM B16, ALLOY C36000, TEMPER H02.

FINISHES:

1. CONTACT = GOLD PLATE PER ASTM B488-11, TYPE II, 50µin MIN, GRADE C, OVER 100 TO 200µin STRESS FREE SULFAMATE NICKEL PER AMS-QQ-N-290.
2. ALL OTHER METAL PARTS = GOLD PLATE PER ASTM B488-11, TYPE II, 30µin MIN, GRADE C OVER 100 TO 200µin COPPER STRIKE PER AMS 2418.

UNLESS OTHERWISE SPECIFIED DIMENSIONS ARE IN INCHES TOLERANCES ON	DWN:	DATE	 Property of Radiall This document cannot be reproduced or communicated to a third party without prior written permission of RADIALL.	
	D.N.	07/05/16		
	CHKD:	DATE		
DECIMAL	ANGLE	N.D.	07/05/16	75ohm STRAIGHT MALE SCREW-ON BULKHEAD MOUNTED JACK TO JACK ADAPTER
		APVD:	DATE	
REFERENCE:	MATERIALS & FINISHES:	J.M.	07/05/16	SIZE A FSCM NO. 19505 DWG NO. 5722-1501-000 REV A
ORIGINATED: D.N. DATE: 07/05/16	SEE NOTES	SCALE 5:1		THIRD ANGLE PROJECTION  SHEET 1 OF 1

5722-1501-000