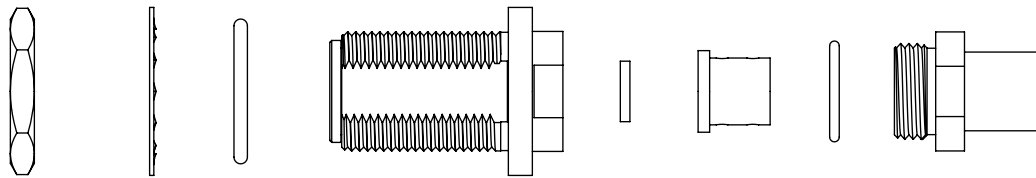
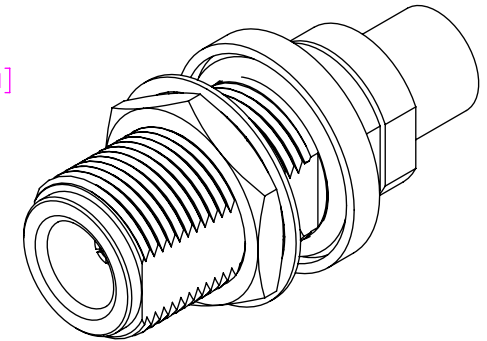
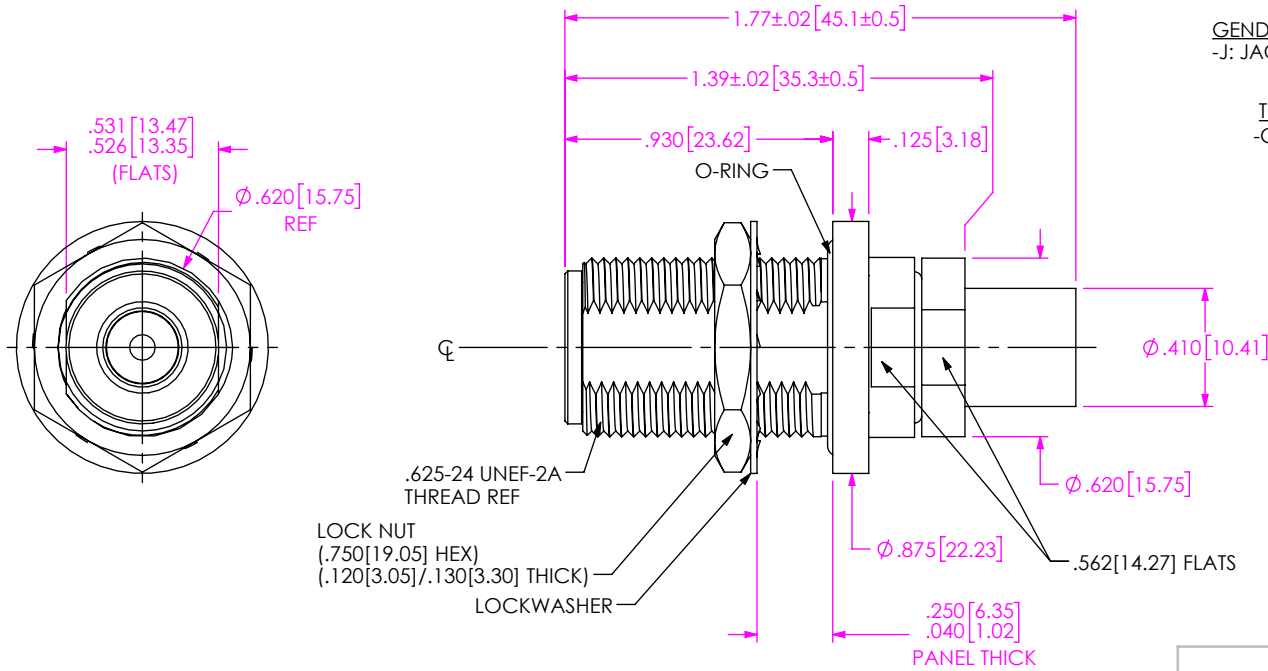


DO NOT SCALE FROM THIS PRINT

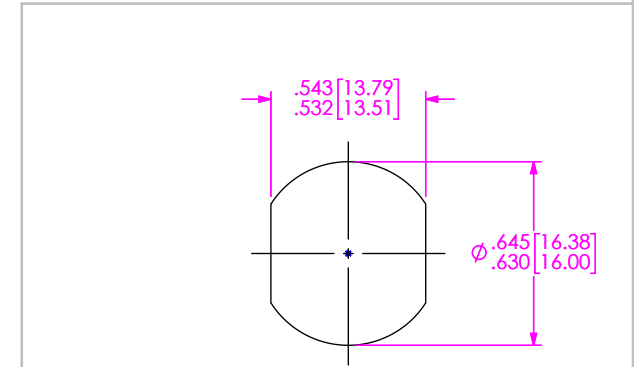
DESIGNED & DIMENSIONED IN INCHES[MILLIMETERS]

PRF06-J-C-EP-335A-BS

SERIES -06: NTPE
 GENDER -J: JACK
 TYPE -C: CABLE
 TERMINATION -S: SOLDER CLAMP
 ORIENTATION -B: BULKHEAD
 CABLE TYPE -335A: HARBOUR LL335I
 FINISH -EP: 50µ" EXTRA HEAVY GOLD CENTER CONTACT, PASSIVATED OUTER BODY



EXPLODED VIEW
 NOT TO SCALE
 (FOR CLARITY ONLY)

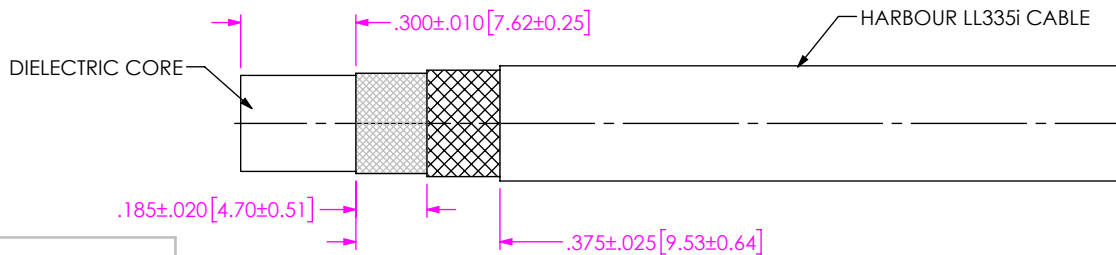


RECOMMENDED PANEL CUTOUT

NOTES:

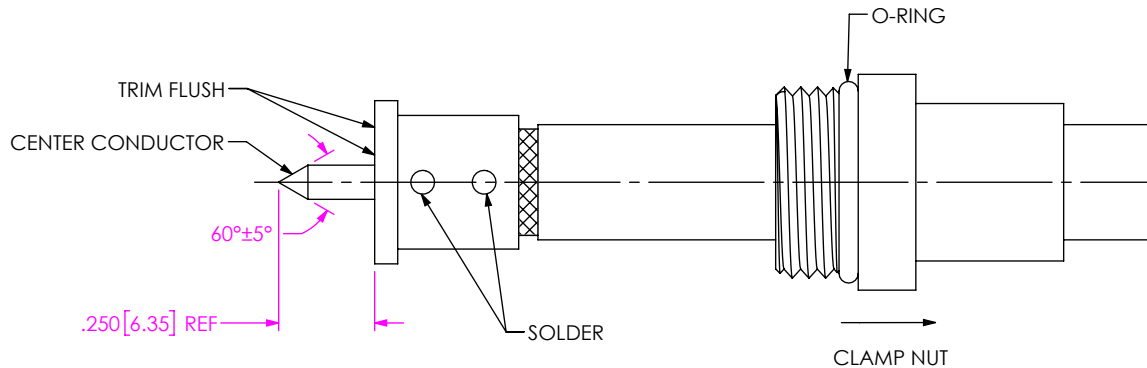
- MATERIAL:
 BODY, BUSHING, CLAMP NUT, LOCK WASHER, JAM NUT: STAINLESS STEEL
 CONTACT: BERYLLIUM COPPER
 SOLDER FERRULE: BRASS ALLOY
 BEADS: PEI
 O-RINGS: SILICONE RUBBER
- FINISH:
 BODY, BUSHING, CLAMP NUT, LOCK WASHER, JAM NUT: PASSIVATED
 CONTACT: 50µ" MIN. GOLD OVER 50µ" MIN. NICKEL PLATE
 SOLDER FERRULE: 10µ" MIN. GOLD OVER 50µ" MIN. NICKEL PLATE
- PCI P/N: 3562

UNLESS OTHERWISE SPECIFIED, DIMENSIONS ARE IN INCHES. TOLERANCES ARE: DECIMALS ANGLES .XX: ±.01 [0.3] 1° .XXX: ±.005 [0.13] .XXXX: ±.0005 [0.013]	* PROPRIETARY NOTE * THIS DOCUMENT CONTAINS CONFIDENTIAL AND PROPRIETARY INFORMATION AND ALL DESIGN, MANUFACTURING, REPRODUCTION, USE, PATENT RIGHTS AND SALES RIGHTS ARE EXPRESSLY RESERVED BY SAMTEC, INC. THIS DOCUMENT SHALL NOT BE DISCLOSED, IN WHOLE OR PART, TO ANY UNAUTHORIZED PERSON OR ENTITY NOR REPRODUCED, TRANSFERRED OR INCORPORATED IN ANY OTHER PROJECT IN ANY MANNER WITHOUT THE EXPRESS WRITTEN CONSENT OF SAMTEC, INC.	F:\DWG\MISC\MKTG\PRF06-J-C-EP-335A-BS-MKT.SLDDRW	
		DESCRIPTION: N BULKHEAD JACK. SOLDER CLAMP FOR HARBOUR LL335I CABLE	
DO NOT SCALE DRAWING SHEET SCALE: 3:2		DWG. NO. PRF06-J-C-EP-335A-BS	
BY: JOE Z 02/07/2021 SHEET 1 OF 3		samtec 520 PARK EAST BLVD, NEW ALBANY, IN 47150 PHONE: 812-944-6733 FAX: 812-948-5047 e-Mail: info@SAMTEC.com code 55322	



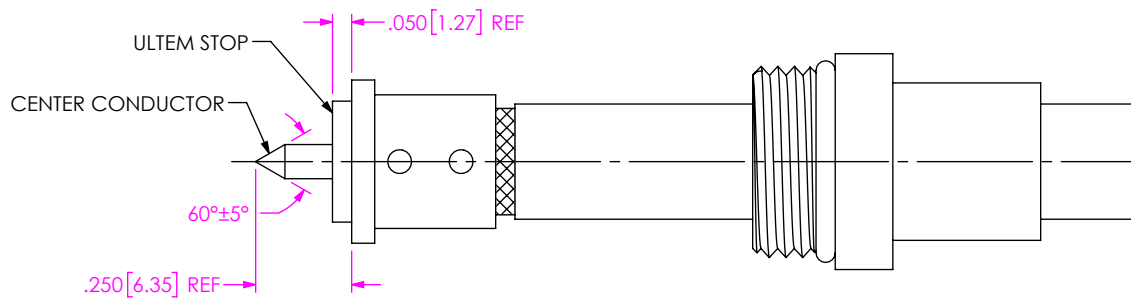
IN-PROCESS VIEW 1

1. TRIM CABLE TO EXPOSE DIELECTRIC CORE AND BRAIDS AS SHOWN.



IN-PROCESS VIEW 2

- 2A. SLIDE CLAMP NUT OVER CABLE AS SHOWN.
- 2B. INSERT CABLE INTO FERRULE UNTIL INNER BRAID SEATS AND SOLDER TO FERRULE WHERE SHOWN.
- 2C. TRIM DIELECTRIC CORE FLUSH WITH FACE OF SOLDER FERRULE.
- 2D. POINT CENTER CONDUCTOR AS SHOWN.



IN-PROCESS VIEW 3

3. SLIDE DIELECTRIC STOP ONTO CABLE CENTER CONDUCTOR FLUSH WITH SOLDER FERRULE FACE.

PROPRIETARY NOTE
 THIS DOCUMENT CONTAINS CONFIDENTIAL AND PROPRIETARY INFORMATION AND ALL DESIGN, MANUFACTURING, REPRODUCTION, USE, PATENT RIGHTS AND SALES RIGHTS ARE EXPRESSLY RESERVED BY SAMTEC, INC. THIS DOCUMENT SHALL NOT BE DISCLOSED, IN WHOLE OR PART, TO ANY UNAUTHORIZED PERSON OR ENTITY NOR REPRODUCED, TRANSFERRED OR INCORPORATED IN ANY OTHER PROJECT IN ANY MANNER WITHOUT THE EXPRESS WRITTEN CONSENT OF SAMTEC, INC.



520 PARK EAST BLVD, NEW ALBANY, IN 47150
 PHONE: 812-944-6733 FAX: 812-948-5047
 e-Mail info@SAMTEC.com code 55322

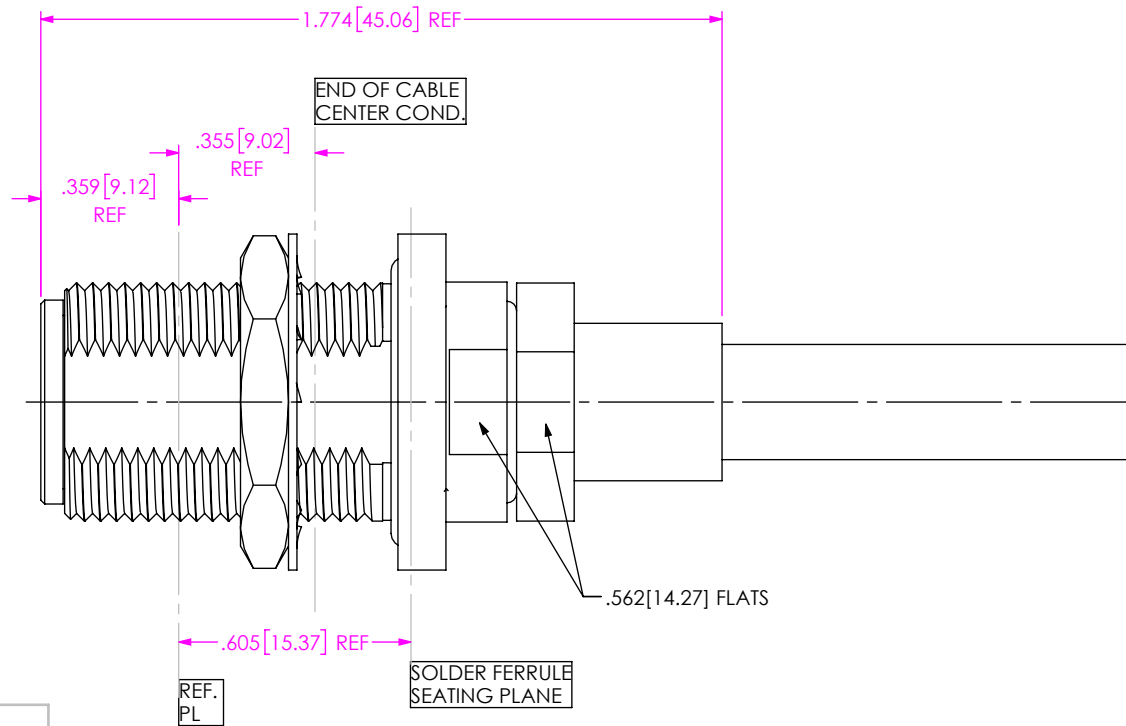
DO NOT SCALE DRAWING

SHEET SCALE: 2:1

DESCRIPTION: N BULKHEAD JACK, SOLDER CLAMP FOR HARBOUR LL335I CABLE

DWG. NO. PRF06-J-C-EP-335A-BS

BY: JOE Z 02/07/2021 SHEET 2 OF 3



4. INSERT CABLE/FERRULE SUB-ASSEMBLY INTO CONNECTOR UNTIL SEATED AND TIGHTEN CLAMP NUT TO 25-35 IN-LBS.

IN-PROCESS VIEW 4

PROPRIETARY NOTE
 THIS DOCUMENT CONTAINS CONFIDENTIAL AND PROPRIETARY INFORMATION AND ALL DESIGN, MANUFACTURING, REPRODUCTION, USE, PATENT RIGHTS AND SALES RIGHTS ARE EXPRESSLY RESERVED BY SAMTEC, INC. THIS DOCUMENT SHALL NOT BE DISCLOSED, IN WHOLE OR PART, TO ANY UNAUTHORIZED PERSON OR ENTITY NOR REPRODUCED, TRANSFERRED OR INCORPORATED IN ANY OTHER PROJECT IN ANY MANNER WITHOUT THE EXPRESS WRITTEN CONSENT OF SAMTEC, INC.



520 PARK EAST BLVD, NEW ALBANY, IN 47150
 PHONE: 812-944-6733 FAX: 812-948-5047
 e-Mail info@SAMTEC.com code 55322

DO NOT SCALE DRAWING

SHEET SCALE: 2:1

DESCRIPTION: N BULKHEAD JACK, SOLDER CLAMP FOR HARBOUR LL335I CABLE

DWG. NO. PRF06-J-C-EP-335A-BS

BY: JOE Z 02/07/2021 SHEET 3 OF 3