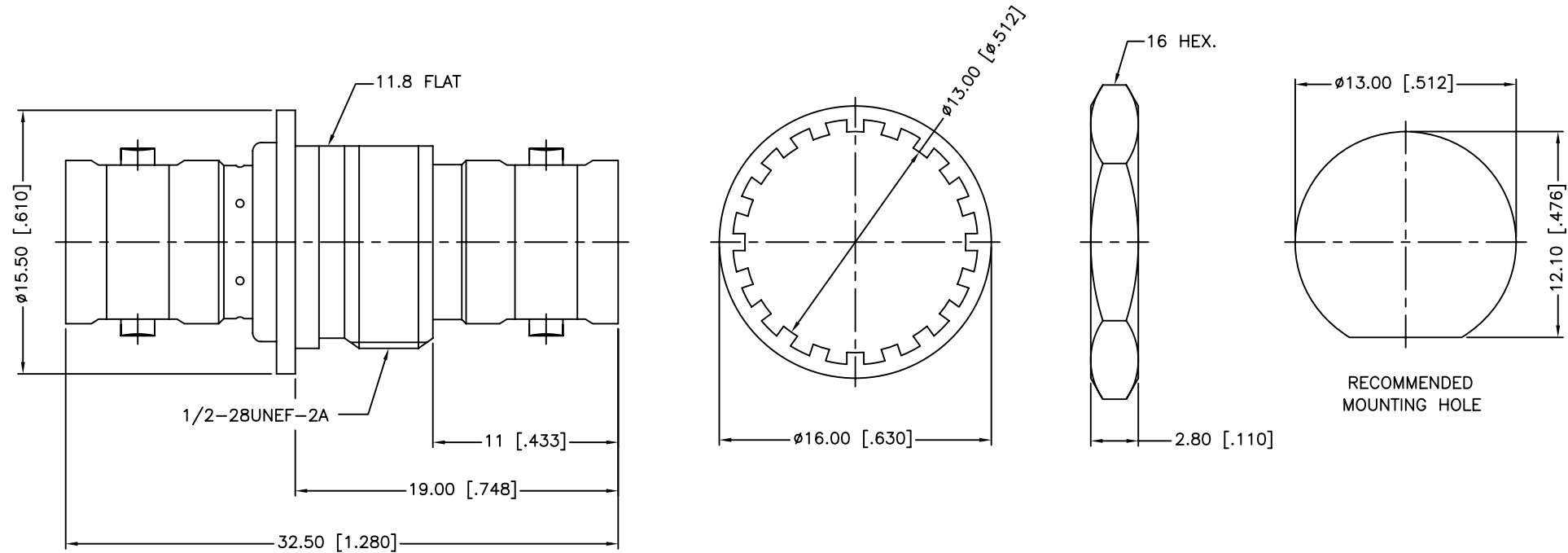


REV.	DATE	ECR NO.	DESCRIPTION
A	01/07/04	XXXXXX	UPDATE DRAWING FORMAT
B	06/22/11	2186	ADD NOTE 1, 2, 3



1. IMPEDANCE: 75 OHMS
2. FREQUENCY RANGE: 0-1 GHz
3. MAX. PANEL THICKNESS: 4.5MM

				UNLESS OTHERWISE SPECIFIED DIMENSIONS ARE IN MILLIMETERS. DIMENSIONS IN [] ARE IN INCHES AND FOR CUSTOMER REFERENCE ONLY.		APPROVALS		DATE	Amphenol Connex						
5	HEX NUT	BRASS	NICKEL	1	UNLESS OTHERWISE SPECIFIED TOLERANCES FOR MILLIMETERS ARE: 0.5 - 8mm ± 0.20mm 8 - 30mm ± 0.40mm 30 - 120mm ± 0.50mm		DRAWN	M.ZHANG				06/22/11	PART DESCRIPTION BNC FEMALE TO FEMALE BULKHEAD ISOLATED ADAPTOR - 75 OHM		
4	LOCK WASHER	BRASS	NICKEL	1	UNLESS OTHERWISE SPECIFIED TOLERANCES FOR INCHES ARE: .020 - .315 = ± 0.007" .315 - 1.180 = ± 0.015" 1.180 - 4.724 = ± 0.020"		CHECKED			PART NO. 112440					
3	CONTACT PIN	PHOSPHOR BRONZE	GOLD	1	DO NOT SCALE DRAWING		ISSUED						DWG. NO. 112440.DWG		
2	INSULATOR	DELTRIN	NATURAL	1			SHEET	1 OF 1		REV.	B	SIZE			
1	BODY	BRASS	NICKEL	1			CAD FILE	C:/CONNEX/112440.DWG							