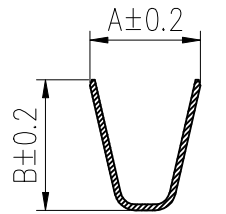
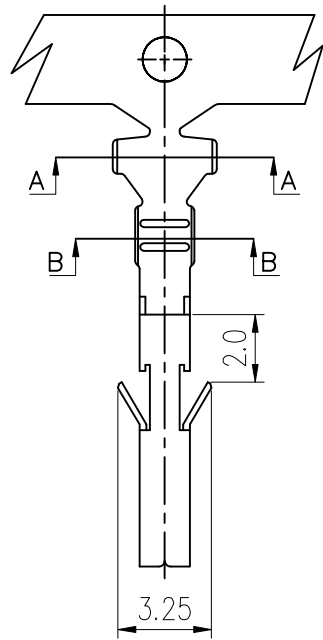
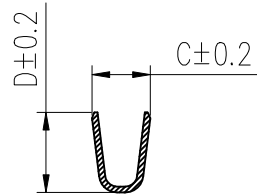


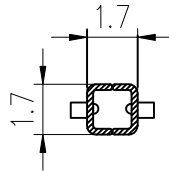
PRODUCT NUMBER
SEE PART NO. TABLE



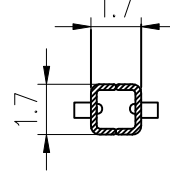
SEC A-A



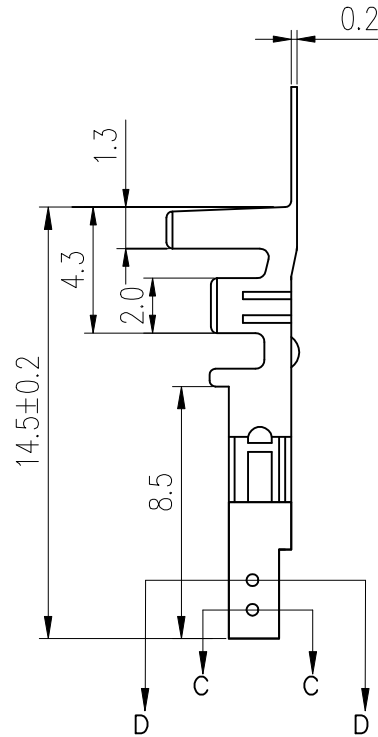
SEC B-B



SEC C-C



SEC D-D



NOTES:

1. MATERIAL: OPTIONAL.
2. PLATING:
CONTACT AREA : OPTIONAL
CRIMP AREA : 80μ" SEMI BRIGHT TIN
UNDER PLATING : MIN. 30μ" NICKEL OVERALL
3. REFER GS-20-0401 APPLICATION SPEC FOR MATING CONNECTOR.
4. PRODUCT SPECIFICATION: GS-12-1181.
5. PACKAGE SPECIFICATION: GS-14-2362.(REEL PACKING)
6. APPLICATION SPECIFICATION: GS-20-0401
7. THIS LF PRODUCT MEETS EUROPEAN UNION DIRECTIVES AND OTHER COUNTRY REGULATIONS AS DESCRIBED IN GS-47-0004
8. PART NUMBER SCHEME:
10127817- X X X X LF

PLATING TYPE:
P: PRE-PLATED
BLANK: POST-PLATED

APPLICABLE AWG:
1: AWG #18~#22
2: AWG #24~#28

PLATING CODE:
1: GOLD FLASH ON CONTACT AREA
2: 80μ" BRIGHT TIN OVERALL
(ONLY FOR PRE-PLATED OPTION)
4: 30u" GOLD PLATING

MATERIAL CODE:
1: PHOSPHORUS BRONZE
2: BRASS

8. DIMENSIONAL & PART NO. TABLE:

PART NO.	A	B	C	D	APPLICABLE WIRES
10127817-XX2XLF	3.2	3.4	1.8	2.2	#24~#28
10127817-XX1XLF	3.7	4.5	1.8	2.46	#18~#22

mat'l. code		surface ISO 1302 ✓		tolerance ISO 406 ISO 1101		projection mm		product family MINITEK	
ltr		ecn no		dr		date		title	
A		TAI		2013-11-11		tolerances unless otherwise specified		RECEPTACLE CRIMP TERMINAL	
B		ELX-T-17193		TAI		2014-03-12		MINITEK PWR 4.2	
C		ELX-T-18006		TAI		2014-06-19		scale NTS	
D		ELX-N-29382		TONY		2018-02-22		dr	
E		ELX-N-32022		TONY		2018-11-29		engr	
F		ELX-I-43510		SONY		2023-01-09		chr	
								appd	
								MITHUN	
sheet		revision		F					
index		sheet		1					

Amphenol FCI

© 2016 AFCI