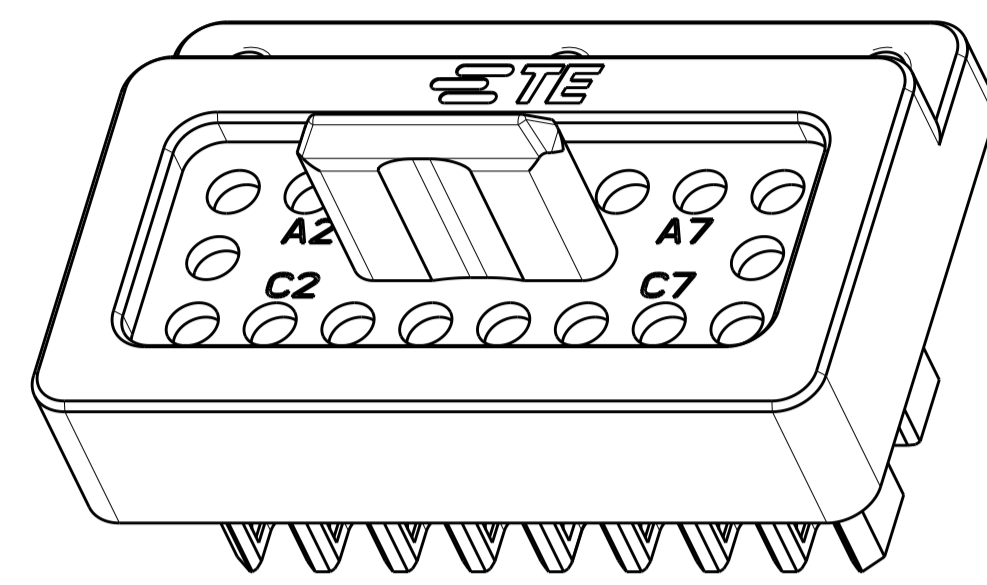
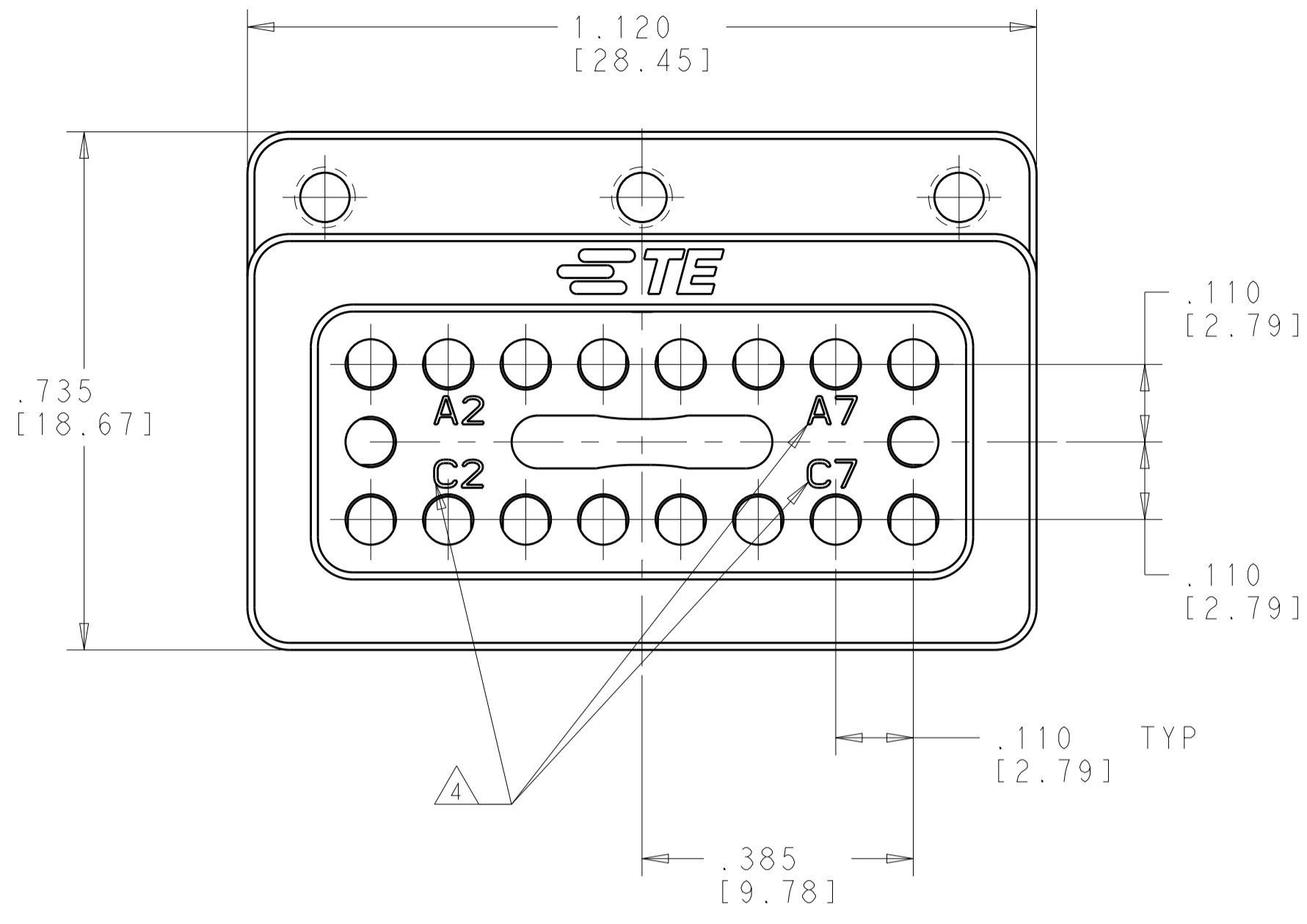
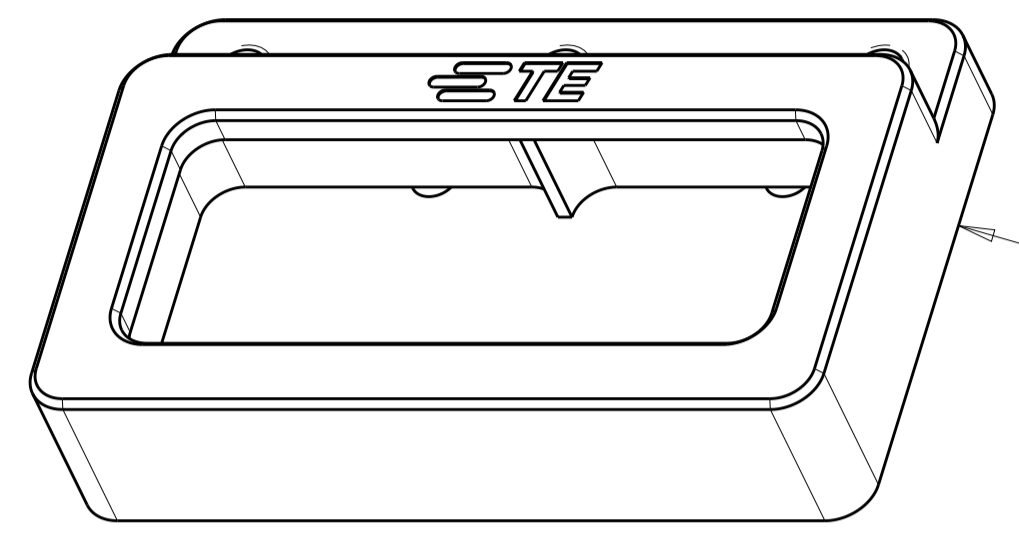


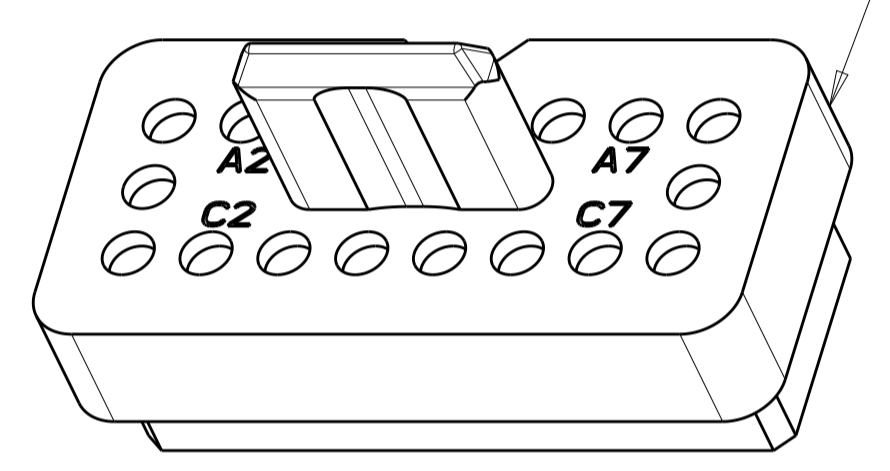
| REVISIONS | | | | |
|-----------|-----|----------------------------|--------|-------|
| P. | LTN | DESCRIPTION | DATE | APVD |
| B | | RELEASED PER ECO 19-005475 | 4-9-19 | CT FB |



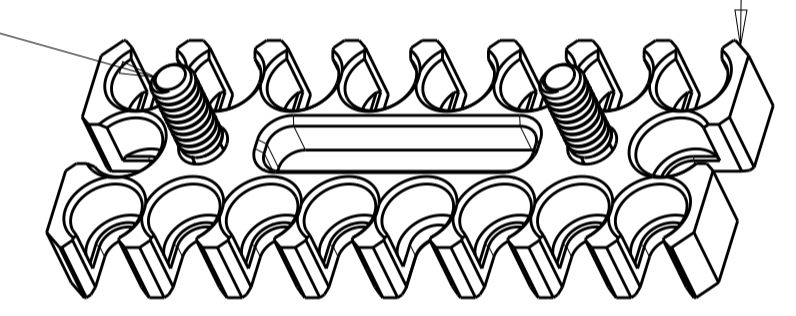
SCALE 4:1



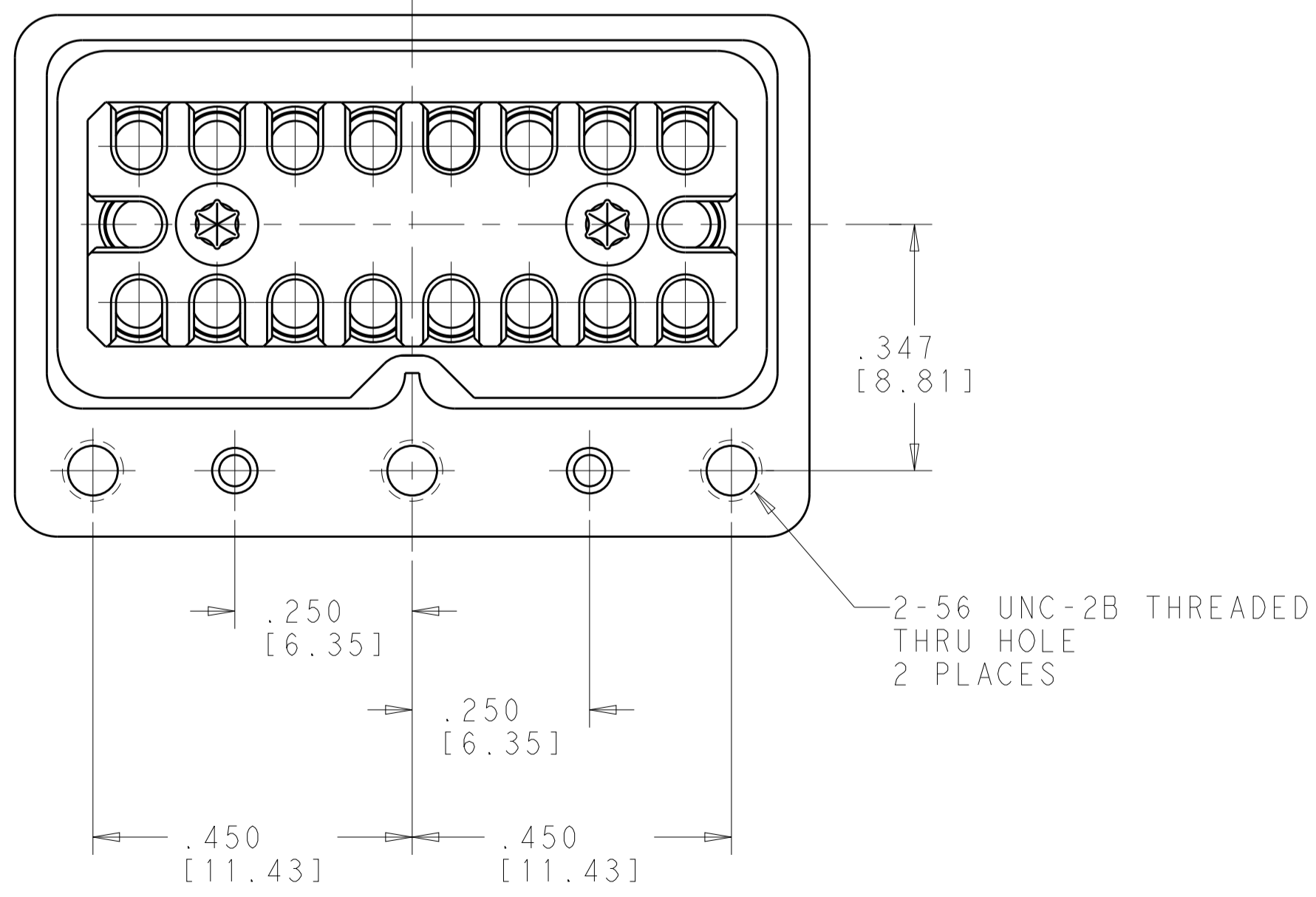
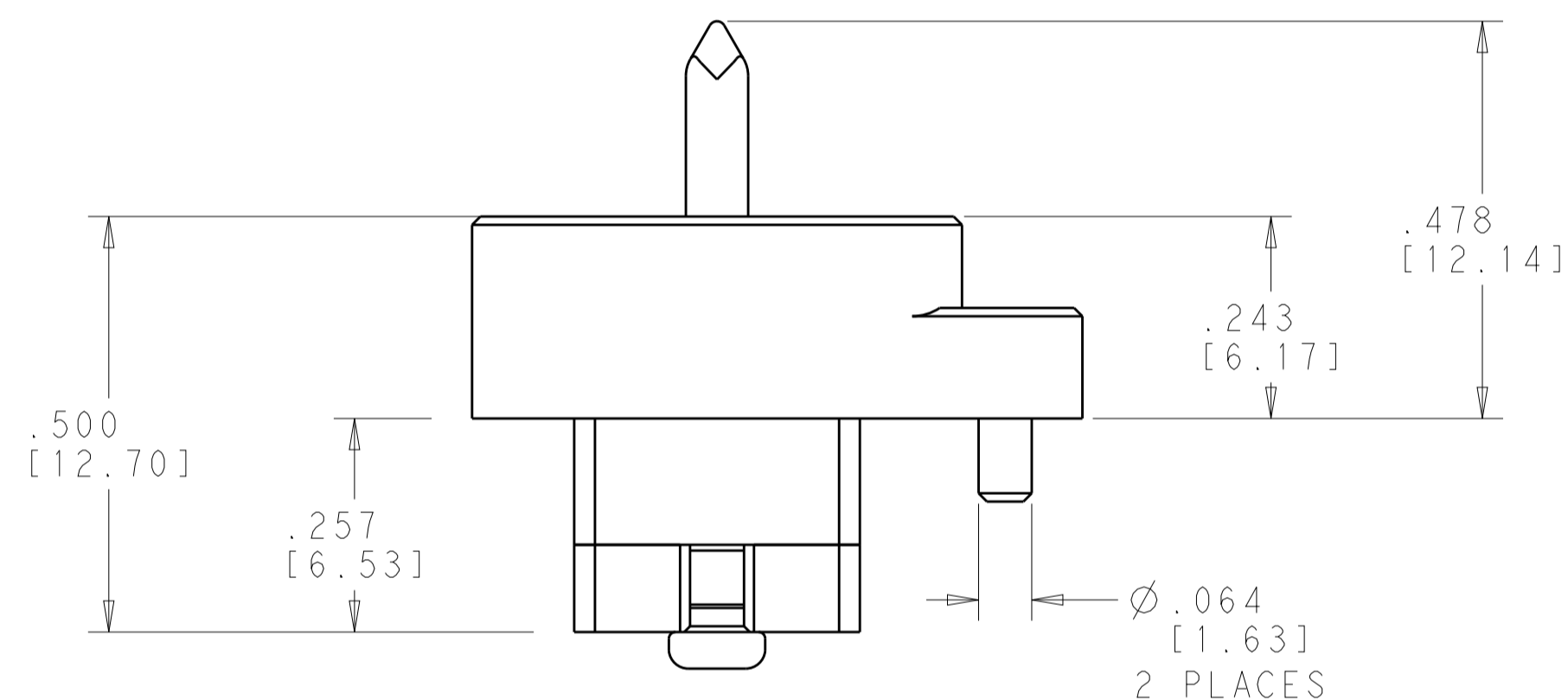
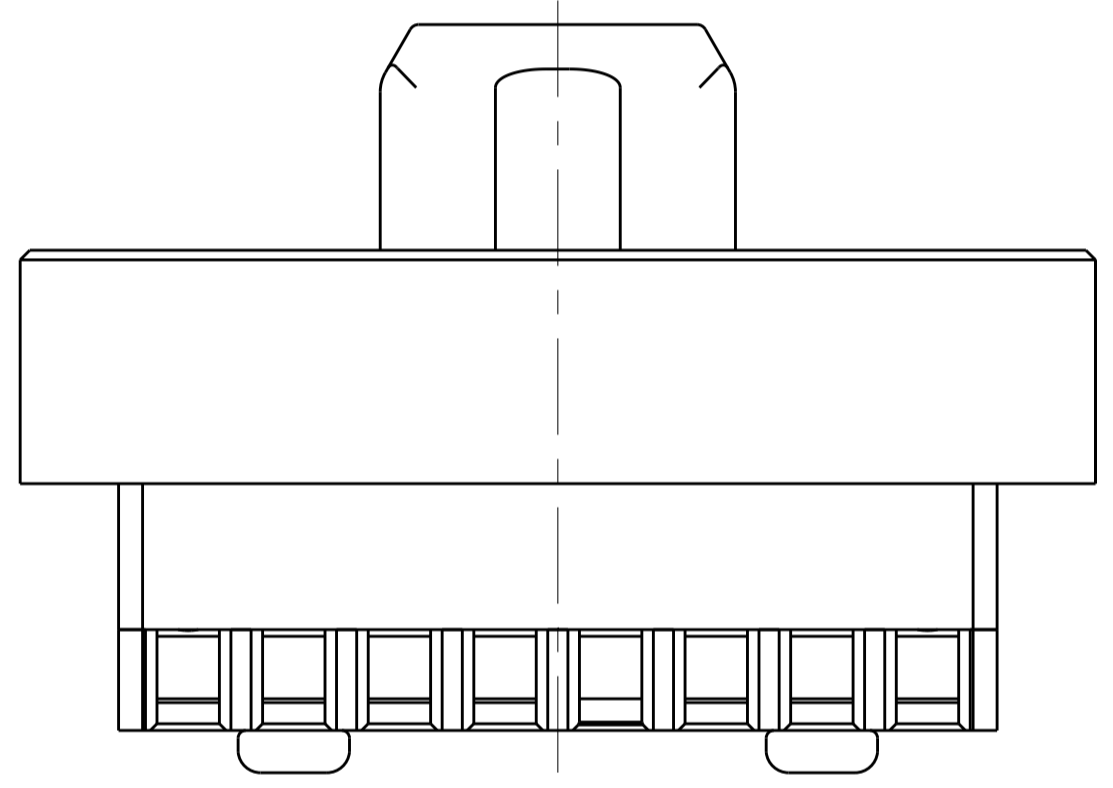
MODULE BODIES



0-80 UNF CAPTIVE SCREW (TORX DRIVE)



SCALE 4:1

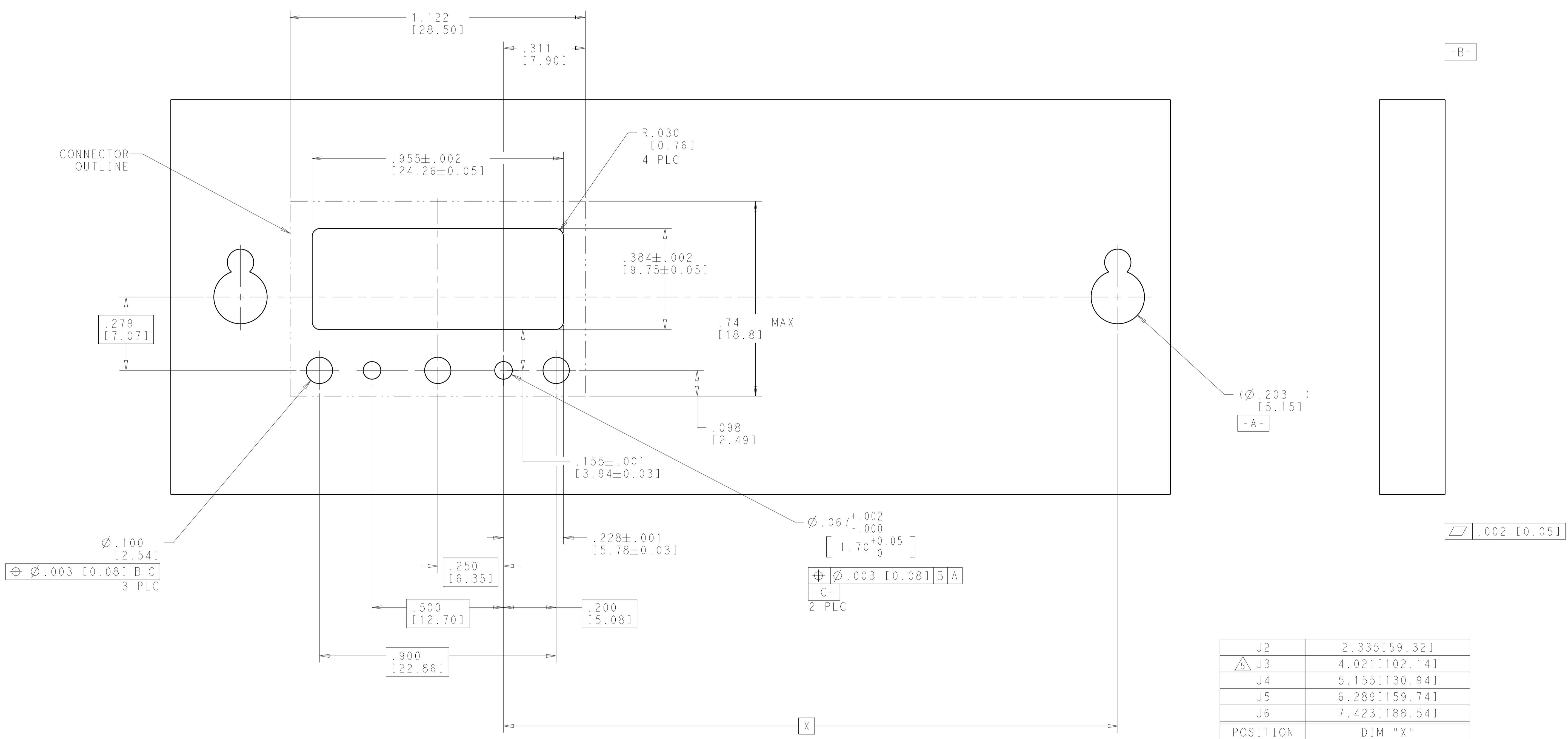


- 1 MATERIAL:
MODULE BODIES - SEE TABLE
SCREWS - 300 SERIES STAINLESS STEEL
- 2 FINISH:
MODULE BODIES - SEE TABLE
SCREWS AND GUIDE PIN - PASSIVATED
- 3. SHIPPED IN KIT FORM.
- 4 CIRCUIT IDENTIFICATION MARKING
- 5 J3 MODULE LOCATION CAN BE MOVED -.129[3.28] TO POSITION J3 = 3.892[98.86] TO ALLOW FOR USE OF A FULL MULTIGIG CONNECTOR IN J4. THE DAUGHTERCARD MODULE POSITION MUST ALSO BE ADJUSTED ACCORDINGLY.

| | | |
|-----------------------------------|--------------------------------|-------------|
| CLEAR CHROMATE CONVERSION COATING | ALUMINUM ALLOY 7075 | 2322337-2 |
| PASSIVATED | STAINLESS STEEL PER UNS S30300 | 2322337-1 |
| MODULE FINISH 2 | MODULE MATERIAL 1 | PART NUMBER |

| | | | | |
|--|-------------------|------------------------------|--|--|
| THIS DRAWING IS A CONTROLLED DOCUMENT. | | OWN: R. MILLER 30JUN2017 | TE Connectivity | |
| DIMENSIONS: INCHES/mm | | CHK: D. WILSON 30JUN2017 | 18 POSITION NanoRF MODULE | |
| TOLERANCES UNLESS OTHERWISE SPECIFIED: | | APVD: K. DOWNHOWER 11APR2018 | P.C.B. MOUNT - BACKPLANE | |
| 0 PLC ± | 1 PLC ± | PRODUCT SPEC | VITA | |
| 2 PLC ± | 3 PLC ±.005[0.13] | APPLICATION SPEC | SIZE: CAGE CODE: DRAWING NO: RESTRICTED TO | |
| 4 PLC ± | ANGLES ± | 408-163016 | A 00779 C=2322337 | |
| MATERIAL: NOTE 1 | FINISH: NOTE 2 | WEIGHT: | SCALE: 5:1 SHEET 1 OF 2 REV B | |
| CUSTOMER DRAWING | | | | |

| REVISIONS | | | | |
|-----------|-------------|-------------|------|------|
| P. | LTN | DESCRIPTION | DATE | APVD |
| - | SEE SHEET 1 | | | |
| | | | | |
| | | | | |



TYP PCB LAYOUT - VIEWED FROM BACKSIDE OF BACKPLANE

| | | | |
|--|--|---|--|
| THIS DRAWING IS A CONTROLLED DOCUMENT. | | DWN: R. MILLER 30JUN2017 CHK: D. WILSON 30JUN2017 APVD: K. DOWNHOWER 11APR2018 | TE Connectivity NAME: 18 POSITION NanoRF MODULE P.C.B. MOUNT - BACKPLANE VITA |
| DIMENSIONS: INCHES/mm | TOLERANCES UNLESS OTHERWISE SPECIFIED: 0 PLC ± 1 PLC ± 2 PLC ± 3 PLC ±.005 [0.13] 4 PLC ± ANGLES ± FINISH ± | PRODUCT SPEC: 108-163006 APPLICATION SPEC: 408-163016 WEIGHT: - CUSTOMER DRAWING | |
| MATERIAL: NOTE 1 | NOTE 2 | SCALE: 5:1 | SHEET 2 OF 2 REV B |