

DRV10970 Evaluation Module

This document is provided with the DRV10970 customer evaluation module (EVM) as a supplement to the DRV10970 datasheet ([SLVSCU7](#)). It details the hardware implementation of the EVM and gives a step-by-step introduction to the device operation.

Contents

1	DRV10970 EVM Kit Contents	1
2	Introduction	1
3	DRV10970 On-Board Connections.....	2
	3.1 Power Input.....	2
	3.2 Interface Connectors (P2 and P3) for Phases of Motor and Hall Inputs	2
	3.3 TLC555 Pins.....	3
4	DRV10970 Package.....	3
5	User Interface	4
	5.1 Jumpers	4
	5.2 LEDs, Switch, Retry	5
	5.3 Hall ICs.....	5
	5.4 Capacitors for Differential Hall Signals.....	6
	5.5 PWM Configuration With the TLC555 Timer	6
	5.6 Test Points.....	7
6	Powering-Up the EVM	7
7	Single Hall Mode	9
8	Configuration for Motors With HALL IC	9
	8.1 DAA and CMTMODE Jumper Position for Motor With HALL IC	10
9	Changes in EVM for Inverted Hall Signals	11
10	EVM Documentation	12

1 DRV10970 EVM Kit Contents

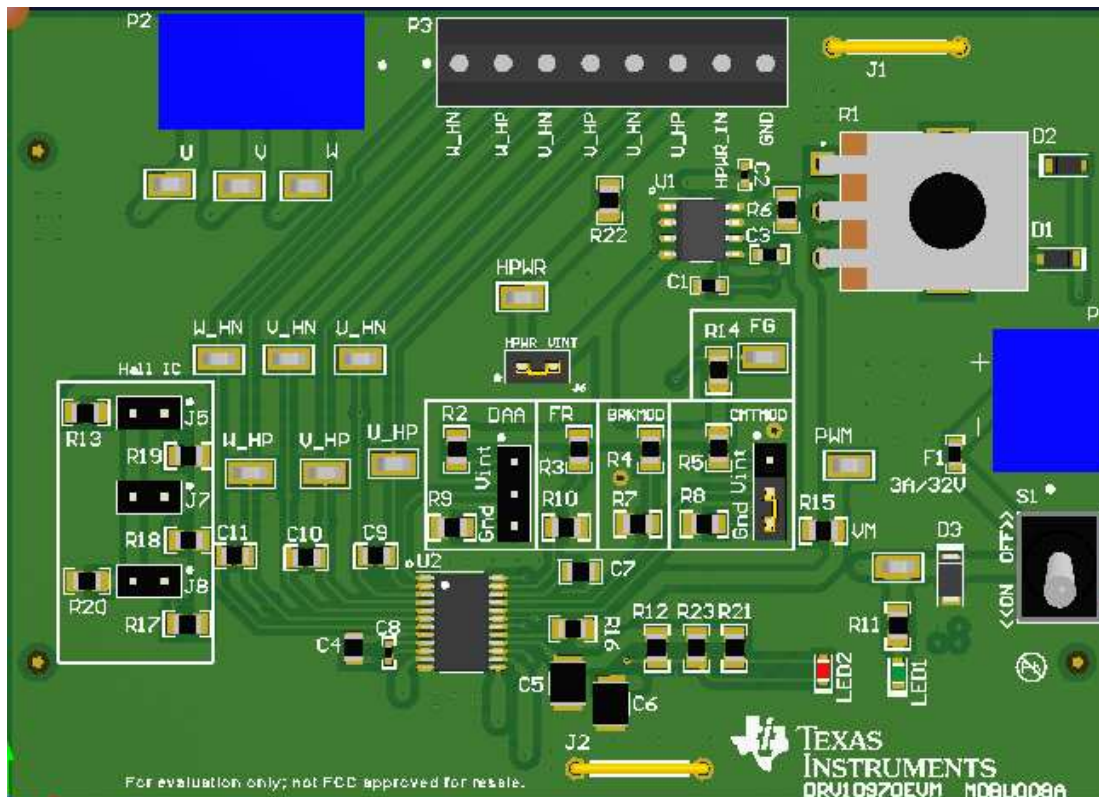
The DV10970 evaluation kit contains the DRV10970 EVM.

2 Introduction

The DRV10970 EVM is an evaluation platform for the DRV10970 three-phase brushless DC motor driver. The EVM includes a TLC555 timer configured to supply a PWM to the DRV10970 and potentiometer to adjust the speed of the motor by varying the duty cycle of the PWM.

This EVM has a wide power supply voltage range. Specific features of this EVM include adaptive driving angle adjustment, differential Hall-sensor inputs, braking mode, motor lock detection, and more. A number of protection features such as overcurrent, undervoltage, overtemperature, and locked rotor bolster system robustness. Most importantly, this EVM has Hall-sensor based commutation of the motor. The user has the ability to accept two modes of Hall input: differential or IC.

This document describes the kit details and explains the functions and locations of test points, jumpers, and connectors present on the kit. For detailed information about the DRV10970, refer to the DRV10970 data sheet ([SLVSCU7](#)).


Figure 1. DRV10970 EVM

3 DRV10970 On-Board Connections

3.1 Power Input

DRV10970 requires an external power supply (5 V to 18 V) to operate. Connector P1 provides the required interface for external power supply. The pin assignment of terminal P1 is as follows:

Table 1. DRV10970

Pin	Description
1	GND
2	VM

3.2 Interface Connectors (P2 and P3) for Phases of Motor and Hall Inputs

Connectors P2 and P3 are used to interface the U, V, and W phases and Hall-sensor inputs. The pin assignments are as follows:

Table 2. Connector P2: 3-Terminal Connector to Connect 3-Phase BLDC Motor

Pin	Description
1	Phase-W
2	Phase-V
3	Phase-U

Table 3. Connector P3: Hall-Sensor Inputs

Pin	Description
1	W negative
2	W positive
3	V negative
4	V positive
5	U negative
6	U positive
7	Hall Power (HPWR)
8	GND

3.3 TLC555 Pins

Table 4 lists the TLC555 pin descriptions.

Table 4. TLC555 Pins

Pin	Description
1	GND
2	TRIG
3	OUT
4	RESET
5	CONT
6	THRES
7	DISCH
8	VCC

4 DRV10970 Package

The DRV10970 pin-out is listed in Table 5.

Table 5. DRV10970 Pin-Out

Pin	Description
1	DAA
2	U_HP
3	U_HN
4	V_HP
5	V_HN
6	W_HP
7	W_HN
8	VCP
9	CPP
10	CPN
11	W
12	GND
13	V
14	U
15	VM
16	VINT
17	CS
18	RD

Table 5. DRV10970 Pin-Out (continued)

Pin	Description
19	PWM
20	CMTMOD
21	BRKM OD
22	RETRY
23	FR
24	FG

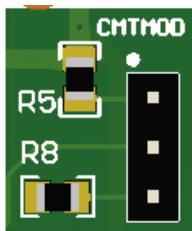
The DRV10970 is packaged in a 24-pin, TSSOP package. For detailed information about the DRV10970, refer to the DRV10970 data sheet ([SLVSCU7](#)).

5 User Interface

5.1 Jumpers

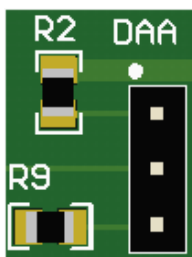
Descriptions for the jumpers are provided in the following list:

- **BRKMOD** is the brake mode setting. It is pulled high to VINT through R4. R7 (not populated) allows BRKMOD to be pulled to GND. When the motor is not driven, either in lock condition or when PWM equals zero, the state of the BRKMOD pin sets the spin down of the motor. The BRKMOD pin can be low (coasting during spin down) or high (braking during spin down). Because R7 is not populated, by default is it braking.
- **CMTMOD** is the commutation mode setting. This signal is connected to jumper J3. When pulled high, there is sinusoidal operation mode with 30° Hall placement. When low, there is sinusoidal operation mode with 0° Hall placement. When the jumper is floating, there is trapezoidal mode with 30° Hall placement.



J3 Connection	Description
1–2	CMTMOD connected to VINT – sinusoidal operation mode with 30° Hall placement
2–3	CMTMOD connected to GND – sinusoidal operation mode with 0° Hall placement
Unconnected (floating)	Trapezoidal mode with 30° Hall placement

- **DAA** is the drive angle adjustment configuration pin. This signal is connected to jumper J4. When driven high, 5° drive angle adjustment takes place; whereas when driven low, 10° drive angle adjustment takes place. When floating, there is adaptive drive angle adjustment. The adaptive driving angle adjustment (ADAA) achieves the most optimized efficiency regardless of the motor load condition for motors with 0 (symbol of degree) Hall placement.



J4 Connection	Description
1–2	DAA connected to VINT – 5° drive angle adjustment
2–3	DAA connected to GND – 10° drive angle adjustment
Unconnected (floating)	Adaptive driving angle adjustment.

- **FR** is the motor direction control pin. It is pulled high to VINT through R3, which provides a motor operation direction of U-V-W. Each phase leads the previous phase by 120°.
- **FG** and **RD** are open-drain outputs that are externally pulled high to VINT. The **FG** pin indicates the speed of the motor; it toggles high and low every electrical cycle. The **RD** pin indicates the lock condition; it is pulled low when the motor is locked
- Headers **J5**, **J7**, and **J8** allow moving from Hall-differential mode to Hall-IC mode. By default, the DRV10970 EVM operates in Hall-differential mode (jumpers are not populated). Refer to section 9 of the datasheet for more information on Hall-IC connection.



J5 Connection	Description
Connected	U_HN connected to VINT/2
Unconnected	U_HN is floating



J7 Connection	Description
Connected	V_HN connected to VINT/2
Unconnected	V_HN is floating



J8 Connection	Description
Connected	W_HN connected to VINT/2
Unconnected	W_HN is floating

- **J6** is a 2-pin header that connects V_HALL to VINT (5-V internal regulator voltage). If the jumper is not connected, connect an external supply for V_HALL to HPWR. Short pins of J6 using jumper header so that VINT can be used to power the Hall sensors as the default connection.



J6 Connection	Description
Connected	V_HALL connected to VINT
Unconnected	V_HALL is floating

- **J1** and **J2** are shorting bridges allowing a connection to ground.

5.2 LEDs, Switch, Retry

LED1 (Green) turns ON when VM is supplied to the board. **LED2 (Red)** turns ON when the motor is locked.

The **S1** switch allows the applied power supply voltage to reach the rest of the board. A fuse is used to protect the device from overcurrent. Turn the Switch to the “On” position to power the EVM.

C7 is the capacitor for retry timing and is adjustable in the event of a motor lock. Changing C7 alters retry timing. The capacitor value used in the EVM is 0.1 μ F, which corresponds to a retry time of 1.5 seconds.

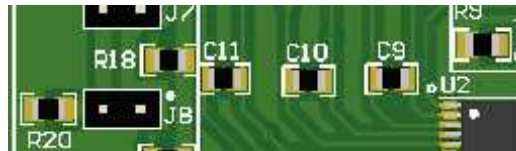
5.3 Hall ICs

Populate **R17**, **R18**, and **R19** with a user-selected pull-up resistor for the Hall-sensor IC with open-drain output.

R22 (currently 0 Ω) is a current-limiting resistor for Hall-element sensors and is configurable to the application.

5.4 Capacitors for Differential Hall Signals

There are options for populating capacitors across differential Hall signals to filter out noise on the Hall-element output. Noise on the Hall signal degrades the performance of the device. Noise can be minimized by using noise-filtering capacitors (C11, C10, and C9) across the x_HP and x_HN pins as shown in the following image. The value of the capacitor can be chosen such that RC time constant is in the range of 0.1–2 μ s. For example, to achieve a time constant of 1- μ s for application with a Hall sensor with an internal impedance between the Hall output to ground of 1 k Ω ; capacitor with a value of 1 μ F can be populated.



5.5 PWM Configuration With the TLC555 Timer

The PWM signal is generated by circuitry based on TI's TLC555 low-power timer. PWM is generated based on input from the potentiometer. In order to provide an external PWM signal to the motor driver, remove the 0- Ω resistor (R15) and connect the external PWM signal to the PWM test point. By default, **R15** is populated on the board. The PWM signal generated by the circuitry on the EVM is approximately 25 kHz and is adjustable from 5% to 95% duty cycle using the potentiometer (R1).

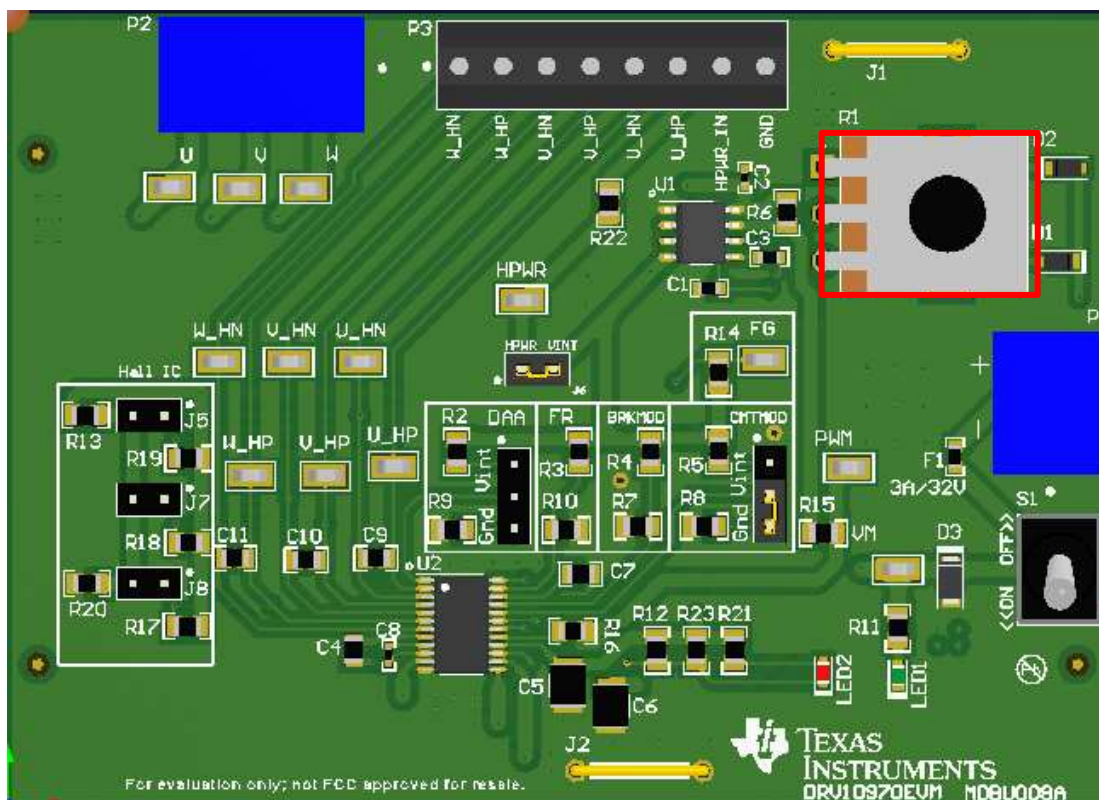


Figure 2. Potentiometer on DRV10970 EVM

The potentiometer adjusts the duty cycle of the PWM signal, which in turn adjusts the speed of the motor. A lower duty cycle gives a lower speed and a higher duty cycle provides a higher speed. Turning the potentiometer clockwise lowers the speed, and turning it counterclockwise increases the speed.

The DRV10970 enters sleep mode when PWM equals zero for T_{sleep} . In sleep mode, VINT shuts down. PWM can be pulled to 0% by removing R15 (0- Ω resistor) and shorting PWM to ground using the test point.

For more information on the PWM input required by the DRV10970, refer to the datasheet ([SLVSCU7](#)).

5.6 Test Points

Test points are provided and labeled according to the inputs and outputs of the DRV10970 motor driver (see [Table 6](#)).

Table 6. Test Point Descriptions

Test Points	Description	Test Points	Description
TP 1	VM – Supply Voltage	TP 8	W_HN
TP 2	FG	TP 9	W_HP
TP 3	PWM input	TP 10	V_HN
TP 4	Motor U phase	TP 11	V_HP
TP 5	V_HALL	TP 12	U_HN
TP 6	Motor V phase	TP 13	U_HP
TP 7	Motor W phase		

CAUTION

Do not apply power to the board before you have read through [Section 6](#)!

6 Powering-Up the EVM

The DRV10970 EVM requires a VM power supply source, which has a recommended operating range from 5 to 18 V. Use the following sequence to power-up the EVM:

1. Connect the power supply Ground to pin 1 (GND) and a voltage between 5 to 18 V to pin 2 of connector P1 (VM). Set the current limit on the power supply to 1.5 A and make sure switch S1 is in the OFF position
2. **Jumper position for DAA and CMTMODE:** The default jumper position for DAA is **position 2–3 (10° mode)** and **CMTMODE is position 1–2 (sine-30° mode)**. Based on the relation between Hall signals and BEMF, the setting for jumpers must be configured
Sine 30 mode: In this mode, when the motor is spinning in a clockwise direction, zero crossing for Hall signals is trailing BEMF zero crossing by 30°. If Hall-element output is as shown in [Figure 3](#), then the default setting for jumpers is recommended. If trapezoidal mode is desired, then set the CMTMODE jumper to floating.

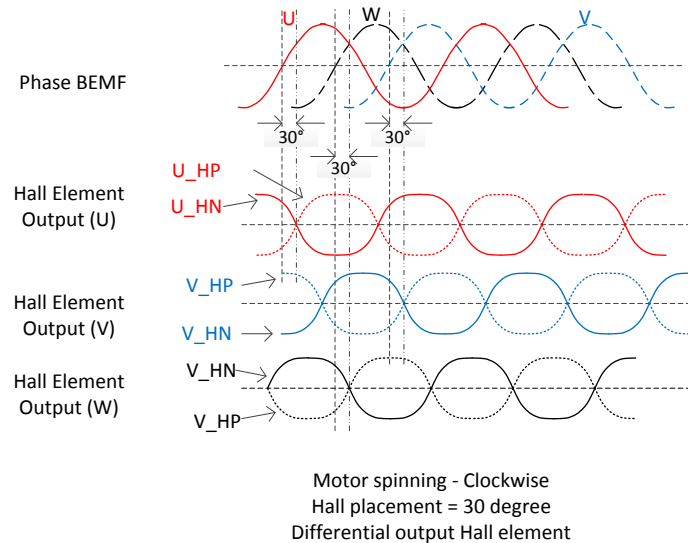


Figure 3. Hall-Element Output With Respect to BEMF Zero Crossing for Default Jumper Setting (30°)

Sine 0 mode: In this mode, when the motor is spinning in a clockwise direction, zero crossing for Hall signals is exactly at the same time as BEMF zero crossing. If Hall-element output is as shown in [Figure 4](#), then change CMTMODE jumper to position 1–2 (0° mode). If the Hall placement is precisely at 0°, with respect to BEMF zero crossing and BEMF is sinusoidal, then ADA mode is recommended. ADA mode can be configured by configuring the DAA jumper setting to floating.

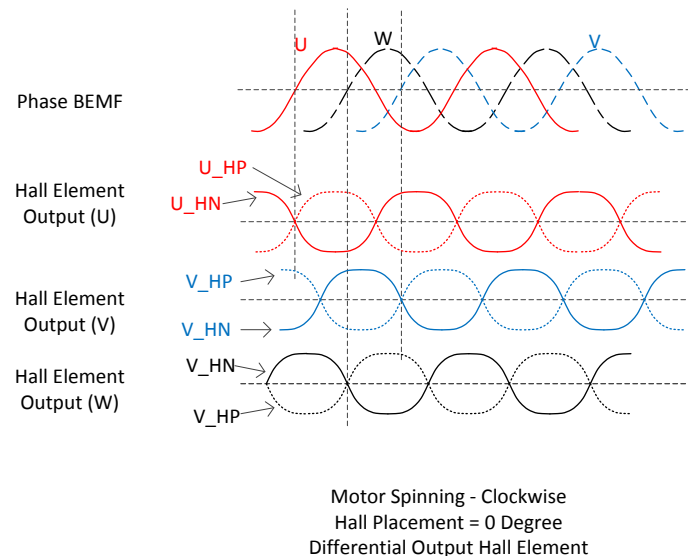


Figure 4. Hall-Element Output With Respect to BEMF Zero Crossing for Sine 0° Mode

3. Turn the POT-R1 fully CCW (counterclockwise). This keeps the speed PWM input to the minimum value.
4. Connect the 3-phase terminal of the motor to connector P2 and Hall input to P3 on the EVM. Refer to [Section 3.2 Interface Connectors \(P2 and P3\) for Phases of Motor and Hall Inputs](#) for details about pin connection for P2 and P3. Refer to the datasheet for details on how to identify U-V-W phase for particular motor and corresponding Hall input.
5. Power up the board and turn the switch S1 to the “On” position. LED1 should turn green. LED2 should only turn on when the motor is locked.
6. Rotate the potentiometer to different positions to change the speed of motor

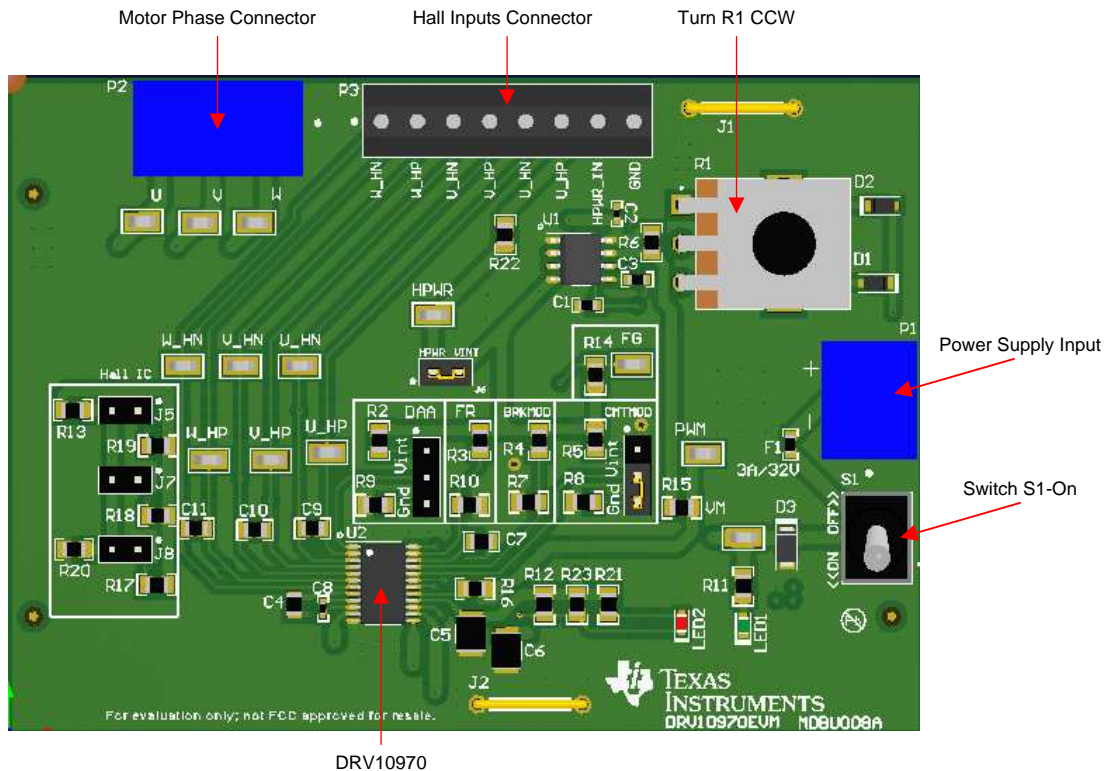


Figure 5. DRV10970 EVM With Various Connections and User Interface

7 Single Hall Mode

The DRV10970EVM can be configured to single Hall mode simply by disconnecting V_HP, V_HN, W_HP and W_HN signals. DRV10970 automatically switches to single Hall mode when it senses that there is no connection on the V_HP, V_HN, W_HP, and W_HN pins.

8 Configuration for Motors With HALL IC

Configure the DRV10970 EVM for use with HALL ICs by populating jumpers for J5, J7, and J8 and resistors R19, R18, and R17 with appropriate values for HALL ICs with open drain as shown in Figure 6.

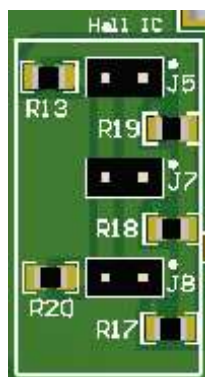


Figure 6. Configuration for Motor With HALL IC

8.1 DAA and CMTMODE Jumper Position for Motor With HALL IC

The default jumper setting for DAA is position 2–3 (10° mode) and for CMTMODE is position 1–2 (sine 30° mode). Based on the relation between Hall signals and BEMF, the jumper settings must be configured.

Sine 30 mode: In this mode, when the motor is spinning in a clockwise direction, zero crossing for Hall signals is trailing BEMF zero crossing by 30°. If output for Hall ICs is as shown in Figure 7, then the default setting for jumpers is recommended. If trapezoidal mode is desired, then set the CMTMODE jumper setting as floating.

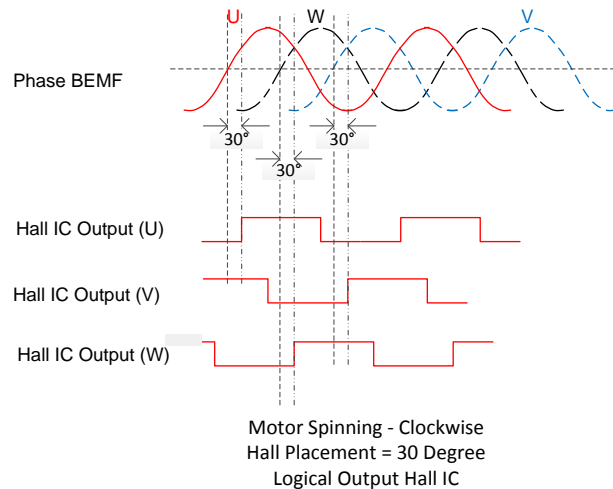


Figure 7. Hall-IC Output With Respect to BEMF Zero Crossing for Default Jumper Setting (30°)

Sine 0 mode: In this mode, when the motor is spinning in a clockwise direction, zero crossing for Hall signals is exactly at same time as BEMF zero crossing. If the output of Hall IC is as shown in Figure 8, then change the CMTMODE jumper to position 1–2 (0° mode). If the Hall placement is precisely at 0° with respect to BEMF zero crossing and BEMF is sinusoidal, then ADA mode is recommended. ADA mode can be configured by configuring the ADA jumper setting to floating.

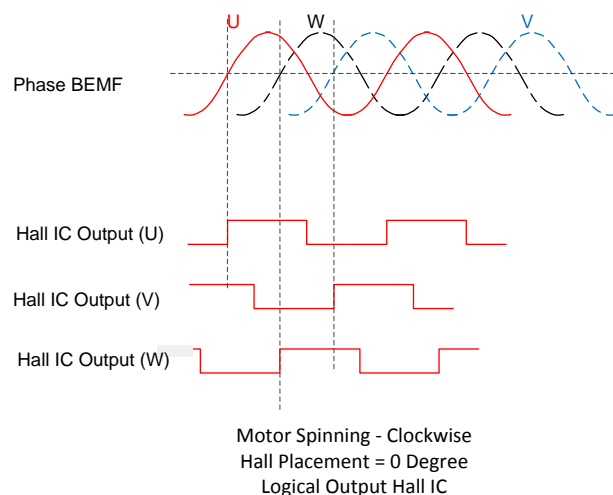


Figure 8. Hall IC Output With Respect to BEMF Zero Crossing for Sine 0° Mode

9 Changes in EVM for Inverted Hall Signals

Inverted 30° Sine mode: In this mode, when motor is spinning in clockwise direction, zero crossing for hall signals is inverted and lagging 30° with respect to BEMF zero crossing. If output of hall IC is as shown in Figure 9, then default jumper settings is recommended. If 30° trapezoidal mode is desired, then CMTMODE jumper setting should be floating and DAA setting can be 2-3 (10° mode).

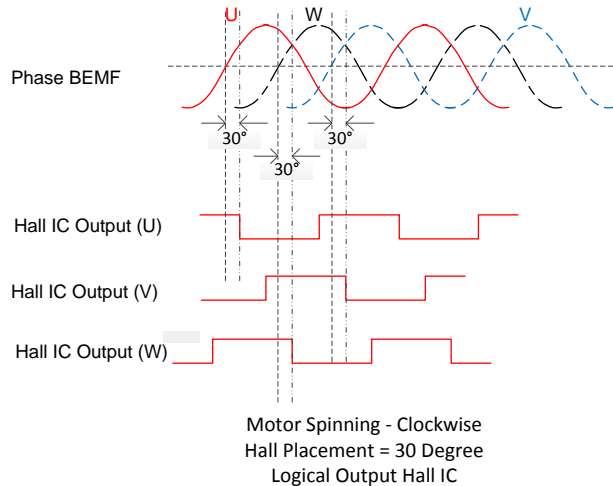


Figure 9. Hall IC Output With Respect to BEMF Zero Crossing for Inverted Sine 30° Mode

Since Hall signals are inverted, configure the DRV10970 as shown in Figure 10. Inputs from the Hall IC is connected to internal comparator, so Hall input and reference VINT/2 signals connection to DRV10970 needs to be switched. So now output of Hall IC needs to be connected to x_HN and reference needs to be connected to x_HP (x represents phases U, V and W).

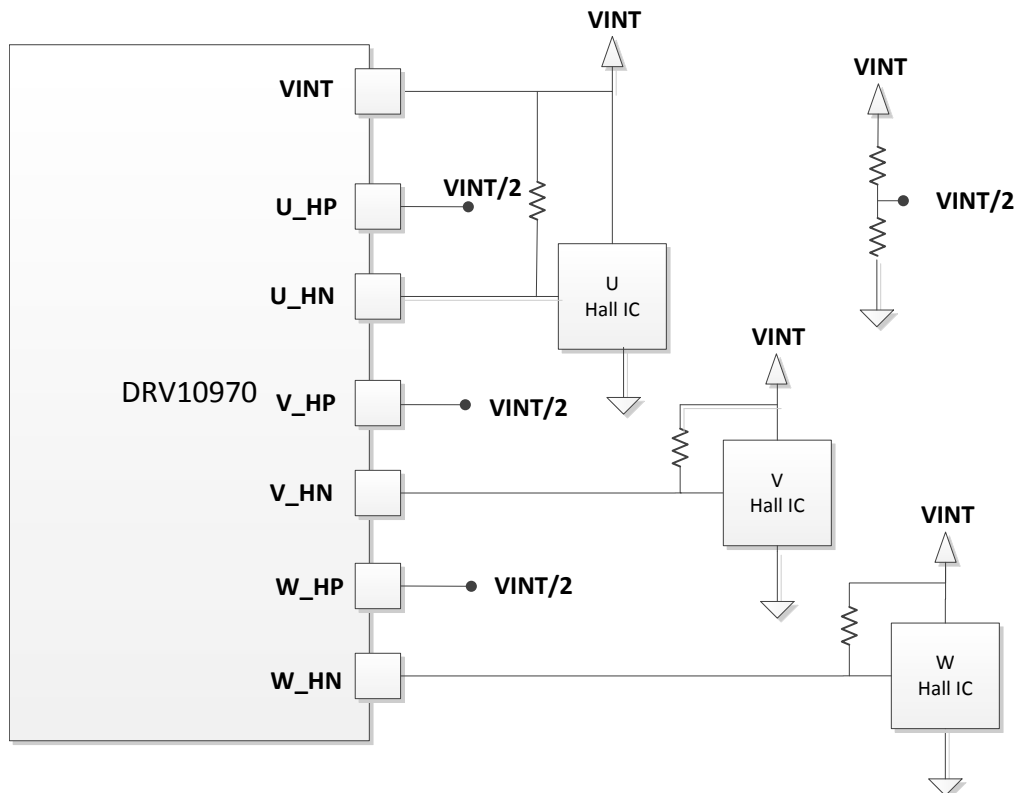


Figure 10. Connection Between DRV10970 and Hall Signals for Sine 30° Mode

Make the following modifications on the DRV10970EVM to configure the DRV10970 for inverted 30° sine mode.

- Ensure R17, R18, and R19 are not populated
- Remove R20
- Replace R13 with 0-Ω resistor
- Add three external pull resistors for hall input across three jumpers J5, J7, and J8
- Connect the external VINT/2 voltage (approximately 2.5 Vdc) to U_HP, V_HP, and W_HP

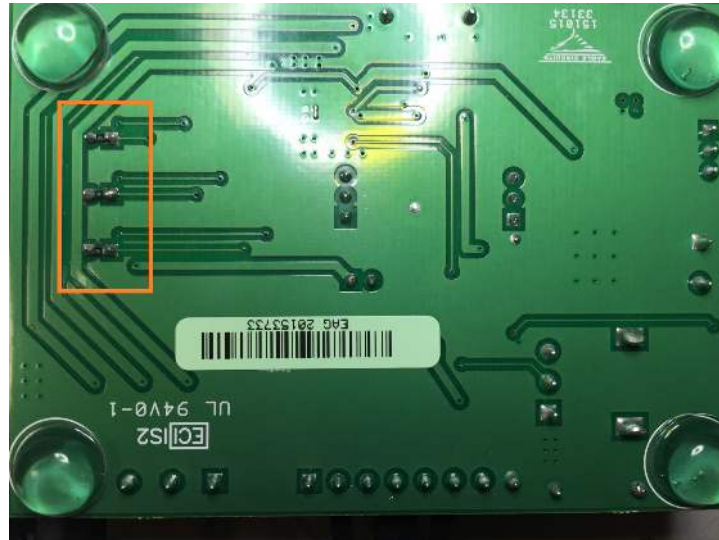


Figure 11. External Resistors Added to EVM for Inverter Sine 30 (Symbol of Degree) Mode

10 EVM Documentation

The EVM schematics, layout, and bill of materials (BOM) are provided in the hardware file ([SLVXXX](#))

STANDARD TERMS AND CONDITIONS FOR EVALUATION MODULES

1. *Delivery:* TI delivers TI evaluation boards, kits, or modules, including any accompanying demonstration software, components, or documentation (collectively, an "EVM" or "EVMs") to the User ("User") in accordance with the terms and conditions set forth herein. Acceptance of the EVM is expressly subject to the following terms and conditions.
 - 1.1 EVMs are intended solely for product or software developers for use in a research and development setting to facilitate feasibility evaluation, experimentation, or scientific analysis of TI semiconductors products. EVMs have no direct function and are not finished products. EVMs shall not be directly or indirectly assembled as a part or subassembly in any finished product. For clarification, any software or software tools provided with the EVM ("Software") shall not be subject to the terms and conditions set forth herein but rather shall be subject to the applicable terms and conditions that accompany such Software
 - 1.2 EVMs are not intended for consumer or household use. EVMs may not be sold, sublicensed, leased, rented, loaned, assigned, or otherwise distributed for commercial purposes by Users, in whole or in part, or used in any finished product or production system.
2. *Limited Warranty and Related Remedies/Disclaimers:*
 - 2.1 These terms and conditions do not apply to Software. The warranty, if any, for Software is covered in the applicable Software License Agreement.
 - 2.2 TI warrants that the TI EVM will conform to TI's published specifications for ninety (90) days after the date TI delivers such EVM to User. Notwithstanding the foregoing, TI shall not be liable for any defects that are caused by neglect, misuse or mistreatment by an entity other than TI, including improper installation or testing, or for any EVMs that have been altered or modified in any way by an entity other than TI. Moreover, TI shall not be liable for any defects that result from User's design, specifications or instructions for such EVMs. Testing and other quality control techniques are used to the extent TI deems necessary or as mandated by government requirements. TI does not test all parameters of each EVM.
 - 2.3 If any EVM fails to conform to the warranty set forth above, TI's sole liability shall be at its option to repair or replace such EVM, or credit User's account for such EVM. TI's liability under this warranty shall be limited to EVMs that are returned during the warranty period to the address designated by TI and that are determined by TI not to conform to such warranty. If TI elects to repair or replace such EVM, TI shall have a reasonable time to repair such EVM or provide replacements. Repaired EVMs shall be warranted for the remainder of the original warranty period. Replaced EVMs shall be warranted for a new full ninety (90) day warranty period.
3. *Regulatory Notices:*
 - 3.1 *United States*
 - 3.1.1 *Notice applicable to EVMs not FCC-Approved:*

This kit is designed to allow product developers to evaluate electronic components, circuitry, or software associated with the kit to determine whether to incorporate such items in a finished product and software developers to write software applications for use with the end product. This kit is not a finished product and when assembled may not be resold or otherwise marketed unless all required FCC equipment authorizations are first obtained. Operation is subject to the condition that this product not cause harmful interference to licensed radio stations and that this product accept harmful interference. Unless the assembled kit is designed to operate under part 15, part 18 or part 95 of this chapter, the operator of the kit must operate under the authority of an FCC license holder or must secure an experimental authorization under part 5 of this chapter.
 - 3.1.2 *For EVMs annotated as FCC – FEDERAL COMMUNICATIONS COMMISSION Part 15 Compliant:*

CAUTION

This device complies with part 15 of the FCC Rules. Operation is subject to the following two conditions: (1) This device may not cause harmful interference, and (2) this device must accept any interference received, including interference that may cause undesired operation.

Changes or modifications not expressly approved by the party responsible for compliance could void the user's authority to operate the equipment.

FCC Interference Statement for Class A EVM devices

NOTE: This equipment has been tested and found to comply with the limits for a Class A digital device, pursuant to part 15 of the FCC Rules. These limits are designed to provide reasonable protection against harmful interference when the equipment is operated in a commercial environment. This equipment generates, uses, and can radiate radio frequency energy and, if not installed and used in accordance with the instruction manual, may cause harmful interference to radio communications. Operation of this equipment in a residential area is likely to cause harmful interference in which case the user will be required to correct the interference at his own expense.

FCC Interference Statement for Class B EVM devices

NOTE: This equipment has been tested and found to comply with the limits for a Class B digital device, pursuant to part 15 of the FCC Rules. These limits are designed to provide reasonable protection against harmful interference in a residential installation. This equipment generates, uses and can radiate radio frequency energy and, if not installed and used in accordance with the instructions, may cause harmful interference to radio communications. However, there is no guarantee that interference will not occur in a particular installation. If this equipment does cause harmful interference to radio or television reception, which can be determined by turning the equipment off and on, the user is encouraged to try to correct the interference by one or more of the following measures:

- Reorient or relocate the receiving antenna.
- Increase the separation between the equipment and receiver.
- Connect the equipment into an outlet on a circuit different from that to which the receiver is connected.
- Consult the dealer or an experienced radio/TV technician for help.

3.2 Canada

3.2.1 For EVMs issued with an Industry Canada Certificate of Conformance to RSS-210

Concerning EVMs Including Radio Transmitters:

This device complies with Industry Canada license-exempt RSS standard(s). Operation is subject to the following two conditions: (1) this device may not cause interference, and (2) this device must accept any interference, including interference that may cause undesired operation of the device.

Concernant les EVMs avec appareils radio:

Le présent appareil est conforme aux CNR d'Industrie Canada applicables aux appareils radio exempts de licence. L'exploitation est autorisée aux deux conditions suivantes: (1) l'appareil ne doit pas produire de brouillage, et (2) l'utilisateur de l'appareil doit accepter tout brouillage radioélectrique subi, même si le brouillage est susceptible d'en compromettre le fonctionnement.

Concerning EVMs Including Detachable Antennas:

Under Industry Canada regulations, this radio transmitter may only operate using an antenna of a type and maximum (or lesser) gain approved for the transmitter by Industry Canada. To reduce potential radio interference to other users, the antenna type and its gain should be so chosen that the equivalent isotropically radiated power (e.i.r.p.) is not more than that necessary for successful communication. This radio transmitter has been approved by Industry Canada to operate with the antenna types listed in the user guide with the maximum permissible gain and required antenna impedance for each antenna type indicated. Antenna types not included in this list, having a gain greater than the maximum gain indicated for that type, are strictly prohibited for use with this device.

Concernant les EVMs avec antennes détachables

Conformément à la réglementation d'Industrie Canada, le présent émetteur radio peut fonctionner avec une antenne d'un type et d'un gain maximal (ou inférieur) approuvé pour l'émetteur par Industrie Canada. Dans le but de réduire les risques de brouillage radioélectrique à l'intention des autres utilisateurs, il faut choisir le type d'antenne et son gain de sorte que la puissance isotrope rayonnée équivalente (p.i.r.e.) ne dépasse pas l'intensité nécessaire à l'établissement d'une communication satisfaisante. Le présent émetteur radio a été approuvé par Industrie Canada pour fonctionner avec les types d'antenne énumérés dans le manuel d'usage et ayant un gain admissible maximal et l'impédance requise pour chaque type d'antenne. Les types d'antenne non inclus dans cette liste, ou dont le gain est supérieur au gain maximal indiqué, sont strictement interdits pour l'exploitation de l'émetteur.

3.3 Japan

3.3.1 *Notice for EVMs delivered in Japan:* Please see http://www.tij.co.jp/lstds/ti_ja/general/eStore/notice_01.page 日本国内に輸入される評価用キット、ボードについては、次のところをご覧ください。
http://www.tij.co.jp/lstds/ti_ja/general/eStore/notice_01.page

3.3.2 *Notice for Users of EVMs Considered "Radio Frequency Products" in Japan:* EVMs entering Japan may not be certified by TI as conforming to Technical Regulations of Radio Law of Japan.

If User uses EVMs in Japan, not certified to Technical Regulations of Radio Law of Japan, User is required by Radio Law of Japan to follow the instructions below with respect to EVMs:

1. Use EVMs in a shielded room or any other test facility as defined in the notification #173 issued by Ministry of Internal Affairs and Communications on March 28, 2006, based on Sub-section 1.1 of Article 6 of the Ministry's Rule for Enforcement of Radio Law of Japan,
2. Use EVMs only after User obtains the license of Test Radio Station as provided in Radio Law of Japan with respect to EVMs, or
3. Use of EVMs only after User obtains the Technical Regulations Conformity Certification as provided in Radio Law of Japan with respect to EVMs. Also, do not transfer EVMs, unless User gives the same notice above to the transferee. Please note that if User does not follow the instructions above, User will be subject to penalties of Radio Law of Japan.

【無線電波を送信する製品の開発キットをお使いになる際の注意事項】 開発キットの中には技術基準適合証明を受けていないものがあります。技術適合証明を受けていないもののご使用に際しては、電波法遵守のため、以下のいずれかの措置を取っていただく必要がありますのでご注意ください。

1. 電波法施行規則第6条第1項第1号に基づく平成18年3月28日総務省告示第173号で定められた電波暗室等の試験設備でご使用いただく。
2. 実験局の免許を取得後ご使用いただく。
3. 技術基準適合証明を取得後ご使用いただく。

なお、本製品は、上記の「ご使用にあたっての注意」を譲渡先、移転先に通知しない限り、譲渡、移転できないものとします。

上記を遵守頂けない場合は、電波法の罰則が適用される可能性があることをご留意ください。日本テキサス・インスツルメンツ株式会社

東京都新宿区西新宿 6 丁目 2 4 番 1 号

西新宿三井ビル

3.3.3 *Notice for EVMs for Power Line Communication:* Please see http://www.tij.co.jp/llds/ti_ja/general/eStore/notice_02.page

電力線搬送波通信についての開発キットをお使いになる際の注意事項については、次のところをご覧ください。http://www.tij.co.jp/llds/ti_ja/general/eStore/notice_02.page

4 *EVM Use Restrictions and Warnings:*

4.1 EVMS ARE NOT FOR USE IN FUNCTIONAL SAFETY AND/OR SAFETY CRITICAL EVALUATIONS, INCLUDING BUT NOT LIMITED TO EVALUATIONS OF LIFE SUPPORT APPLICATIONS.

4.2 User must read and apply the user guide and other available documentation provided by TI regarding the EVM prior to handling or using the EVM, including without limitation any warning or restriction notices. The notices contain important safety information related to, for example, temperatures and voltages.

4.3 *Safety-Related Warnings and Restrictions:*

4.3.1 User shall operate the EVM within TI's recommended specifications and environmental considerations stated in the user guide, other available documentation provided by TI, and any other applicable requirements and employ reasonable and customary safeguards. Exceeding the specified performance ratings and specifications (including but not limited to input and output voltage, current, power, and environmental ranges) for the EVM may cause personal injury or death, or property damage. If there are questions concerning performance ratings and specifications, User should contact a TI field representative prior to connecting interface electronics including input power and intended loads. Any loads applied outside of the specified output range may also result in unintended and/or inaccurate operation and/or possible permanent damage to the EVM and/or interface electronics. Please consult the EVM user guide prior to connecting any load to the EVM output. If there is uncertainty as to the load specification, please contact a TI field representative. During normal operation, even with the inputs and outputs kept within the specified allowable ranges, some circuit components may have elevated case temperatures. These components include but are not limited to linear regulators, switching transistors, pass transistors, current sense resistors, and heat sinks, which can be identified using the information in the associated documentation. When working with the EVM, please be aware that the EVM may become very warm.

4.3.2 EVMs are intended solely for use by technically qualified, professional electronics experts who are familiar with the dangers and application risks associated with handling electrical mechanical components, systems, and subsystems. User assumes all responsibility and liability for proper and safe handling and use of the EVM by User or its employees, affiliates, contractors or designees. User assumes all responsibility and liability to ensure that any interfaces (electronic and/or mechanical) between the EVM and any human body are designed with suitable isolation and means to safely limit accessible leakage currents to minimize the risk of electrical shock hazard. User assumes all responsibility and liability for any improper or unsafe handling or use of the EVM by User or its employees, affiliates, contractors or designees.

4.4 User assumes all responsibility and liability to determine whether the EVM is subject to any applicable international, federal, state, or local laws and regulations related to User's handling and use of the EVM and, if applicable, User assumes all responsibility and liability for compliance in all respects with such laws and regulations. User assumes all responsibility and liability for proper disposal and recycling of the EVM consistent with all applicable international, federal, state, and local requirements.

5. *Accuracy of Information:* To the extent TI provides information on the availability and function of EVMs, TI attempts to be as accurate as possible. However, TI does not warrant the accuracy of EVM descriptions, EVM availability or other information on its websites as accurate, complete, reliable, current, or error-free.

6. *Disclaimers:*
- 6.1 EXCEPT AS SET FORTH ABOVE, EVMS AND ANY WRITTEN DESIGN MATERIALS PROVIDED WITH THE EVM (AND THE DESIGN OF THE EVM ITSELF) ARE PROVIDED "AS IS" AND "WITH ALL FAULTS." TI DISCLAIMS ALL OTHER WARRANTIES, EXPRESS OR IMPLIED, REGARDING SUCH ITEMS, INCLUDING BUT NOT LIMITED TO ANY IMPLIED WARRANTIES OF MERCHANTABILITY OR FITNESS FOR A PARTICULAR PURPOSE OR NON-INFRINGEMENT OF ANY THIRD PARTY PATENTS, COPYRIGHTS, TRADE SECRETS OR OTHER INTELLECTUAL PROPERTY RIGHTS.
- 6.2 EXCEPT FOR THE LIMITED RIGHT TO USE THE EVM SET FORTH HEREIN, NOTHING IN THESE TERMS AND CONDITIONS SHALL BE CONSTRUED AS GRANTING OR CONFERRING ANY RIGHTS BY LICENSE, PATENT, OR ANY OTHER INDUSTRIAL OR INTELLECTUAL PROPERTY RIGHT OF TI, ITS SUPPLIERS/LICENSORS OR ANY OTHER THIRD PARTY, TO USE THE EVM IN ANY FINISHED END-USER OR READY-TO-USE FINAL PRODUCT, OR FOR ANY INVENTION, DISCOVERY OR IMPROVEMENT MADE, CONCEIVED OR ACQUIRED PRIOR TO OR AFTER DELIVERY OF THE EVM.
7. *USER'S INDEMNITY OBLIGATIONS AND REPRESENTATIONS.* USER WILL DEFEND, INDEMNIFY AND HOLD TI, ITS LICENSORS AND THEIR REPRESENTATIVES HARMLESS FROM AND AGAINST ANY AND ALL CLAIMS, DAMAGES, LOSSES, EXPENSES, COSTS AND LIABILITIES (COLLECTIVELY, "CLAIMS") ARISING OUT OF OR IN CONNECTION WITH ANY HANDLING OR USE OF THE EVM THAT IS NOT IN ACCORDANCE WITH THESE TERMS AND CONDITIONS. THIS OBLIGATION SHALL APPLY WHETHER CLAIMS ARISE UNDER STATUTE, REGULATION, OR THE LAW OF TORT, CONTRACT OR ANY OTHER LEGAL THEORY, AND EVEN IF THE EVM FAILS TO PERFORM AS DESCRIBED OR EXPECTED.
8. *Limitations on Damages and Liability:*
- 8.1 *General Limitations.* IN NO EVENT SHALL TI BE LIABLE FOR ANY SPECIAL, COLLATERAL, INDIRECT, PUNITIVE, INCIDENTAL, CONSEQUENTIAL, OR EXEMPLARY DAMAGES IN CONNECTION WITH OR ARISING OUT OF THESE TERMS AND CONDITIONS OR THE USE OF THE EVMS PROVIDED HEREUNDER, REGARDLESS OF WHETHER TI HAS BEEN ADVISED OF THE POSSIBILITY OF SUCH DAMAGES. EXCLUDED DAMAGES INCLUDE, BUT ARE NOT LIMITED TO, COST OF REMOVAL OR REINSTALLATION, ANCILLARY COSTS TO THE PROCUREMENT OF SUBSTITUTE GOODS OR SERVICES, RETESTING, OUTSIDE COMPUTER TIME, LABOR COSTS, LOSS OF GOODWILL, LOSS OF PROFITS, LOSS OF SAVINGS, LOSS OF USE, LOSS OF DATA, OR BUSINESS INTERRUPTION. NO CLAIM, SUIT OR ACTION SHALL BE BROUGHT AGAINST TI MORE THAN ONE YEAR AFTER THE RELATED CAUSE OF ACTION HAS OCCURRED.
- 8.2 *Specific Limitations.* IN NO EVENT SHALL TI'S AGGREGATE LIABILITY FROM ANY WARRANTY OR OTHER OBLIGATION ARISING OUT OF OR IN CONNECTION WITH THESE TERMS AND CONDITIONS, OR ANY USE OF ANY TI EVM PROVIDED HEREUNDER, EXCEED THE TOTAL AMOUNT PAID TO TI FOR THE PARTICULAR UNITS SOLD UNDER THESE TERMS AND CONDITIONS WITH RESPECT TO WHICH LOSSES OR DAMAGES ARE CLAIMED. THE EXISTENCE OF MORE THAN ONE CLAIM AGAINST THE PARTICULAR UNITS SOLD TO USER UNDER THESE TERMS AND CONDITIONS SHALL NOT ENLARGE OR EXTEND THIS LIMIT.
9. *Return Policy.* Except as otherwise provided, TI does not offer any refunds, returns, or exchanges. Furthermore, no return of EVM(s) will be accepted if the package has been opened and no return of the EVM(s) will be accepted if they are damaged or otherwise not in a resalable condition. If User feels it has been incorrectly charged for the EVM(s) it ordered or that delivery violates the applicable order, User should contact TI. All refunds will be made in full within thirty (30) working days from the return of the components(s), excluding any postage or packaging costs.
10. *Governing Law:* These terms and conditions shall be governed by and interpreted in accordance with the laws of the State of Texas, without reference to conflict-of-laws principles. User agrees that non-exclusive jurisdiction for any dispute arising out of or relating to these terms and conditions lies within courts located in the State of Texas and consents to venue in Dallas County, Texas. Notwithstanding the foregoing, any judgment may be enforced in any United States or foreign court, and TI may seek injunctive relief in any United States or foreign court.

Mailing Address: Texas Instruments, Post Office Box 655303, Dallas, Texas 75265
Copyright © 2015, Texas Instruments Incorporated

IMPORTANT NOTICE

Texas Instruments Incorporated and its subsidiaries (TI) reserve the right to make corrections, enhancements, improvements and other changes to its semiconductor products and services per JESD46, latest issue, and to discontinue any product or service per JESD48, latest issue. Buyers should obtain the latest relevant information before placing orders and should verify that such information is current and complete. All semiconductor products (also referred to herein as "components") are sold subject to TI's terms and conditions of sale supplied at the time of order acknowledgment.

TI warrants performance of its components to the specifications applicable at the time of sale, in accordance with the warranty in TI's terms and conditions of sale of semiconductor products. Testing and other quality control techniques are used to the extent TI deems necessary to support this warranty. Except where mandated by applicable law, testing of all parameters of each component is not necessarily performed.

TI assumes no liability for applications assistance or the design of Buyers' products. Buyers are responsible for their products and applications using TI components. To minimize the risks associated with Buyers' products and applications, Buyers should provide adequate design and operating safeguards.

TI does not warrant or represent that any license, either express or implied, is granted under any patent right, copyright, mask work right, or other intellectual property right relating to any combination, machine, or process in which TI components or services are used. Information published by TI regarding third-party products or services does not constitute a license to use such products or services or a warranty or endorsement thereof. Use of such information may require a license from a third party under the patents or other intellectual property of the third party, or a license from TI under the patents or other intellectual property of TI.

Reproduction of significant portions of TI information in TI data books or data sheets is permissible only if reproduction is without alteration and is accompanied by all associated warranties, conditions, limitations, and notices. TI is not responsible or liable for such altered documentation. Information of third parties may be subject to additional restrictions.

Resale of TI components or services with statements different from or beyond the parameters stated by TI for that component or service voids all express and any implied warranties for the associated TI component or service and is an unfair and deceptive business practice. TI is not responsible or liable for any such statements.

Buyer acknowledges and agrees that it is solely responsible for compliance with all legal, regulatory and safety-related requirements concerning its products, and any use of TI components in its applications, notwithstanding any applications-related information or support that may be provided by TI. Buyer represents and agrees that it has all the necessary expertise to create and implement safeguards which anticipate dangerous consequences of failures, monitor failures and their consequences, lessen the likelihood of failures that might cause harm and take appropriate remedial actions. Buyer will fully indemnify TI and its representatives against any damages arising out of the use of any TI components in safety-critical applications.

In some cases, TI components may be promoted specifically to facilitate safety-related applications. With such components, TI's goal is to help enable customers to design and create their own end-product solutions that meet applicable functional safety standards and requirements. Nonetheless, such components are subject to these terms.

No TI components are authorized for use in FDA Class III (or similar life-critical medical equipment) unless authorized officers of the parties have executed a special agreement specifically governing such use.

Only those TI components which TI has specifically designated as military grade or "enhanced plastic" are designed and intended for use in military/aerospace applications or environments. Buyer acknowledges and agrees that any military or aerospace use of TI components which have **not** been so designated is solely at the Buyer's risk, and that Buyer is solely responsible for compliance with all legal and regulatory requirements in connection with such use.

TI has specifically designated certain components as meeting ISO/TS16949 requirements, mainly for automotive use. In any case of use of non-designated products, TI will not be responsible for any failure to meet ISO/TS16949.

Products

Audio	www.ti.com/audio
Amplifiers	amplifier.ti.com
Data Converters	dataconverter.ti.com
DLP® Products	www.dlp.com
DSP	dsp.ti.com
Clocks and Timers	www.ti.com/clocks
Interface	interface.ti.com
Logic	logic.ti.com
Power Mgmt	power.ti.com
Microcontrollers	microcontroller.ti.com
RFID	www.ti-rfid.com
OMAP Applications Processors	www.ti.com/omap
Wireless Connectivity	www.ti.com/wirelessconnectivity

Applications

Automotive and Transportation	www.ti.com/automotive
Communications and Telecom	www.ti.com/communications
Computers and Peripherals	www.ti.com/computers
Consumer Electronics	www.ti.com/consumer-apps
Energy and Lighting	www.ti.com/energy
Industrial	www.ti.com/industrial
Medical	www.ti.com/medical
Security	www.ti.com/security
Space, Avionics and Defense	www.ti.com/space-avionics-defense
Video and Imaging	www.ti.com/video

TI E2E Community

e2e.ti.com