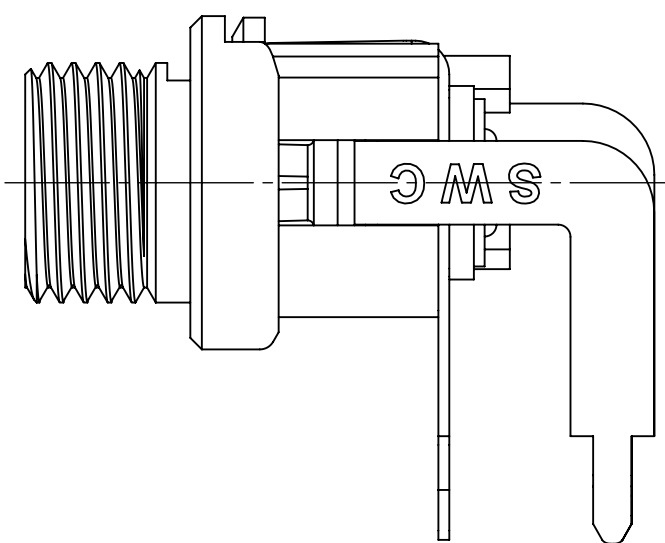
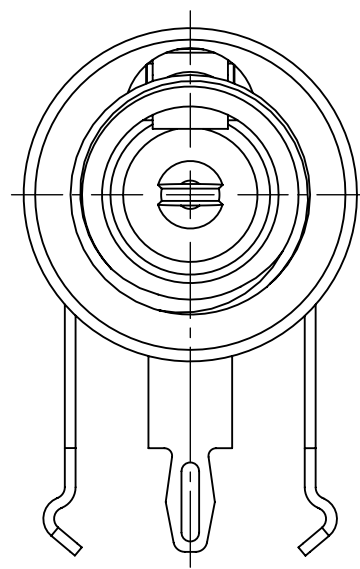


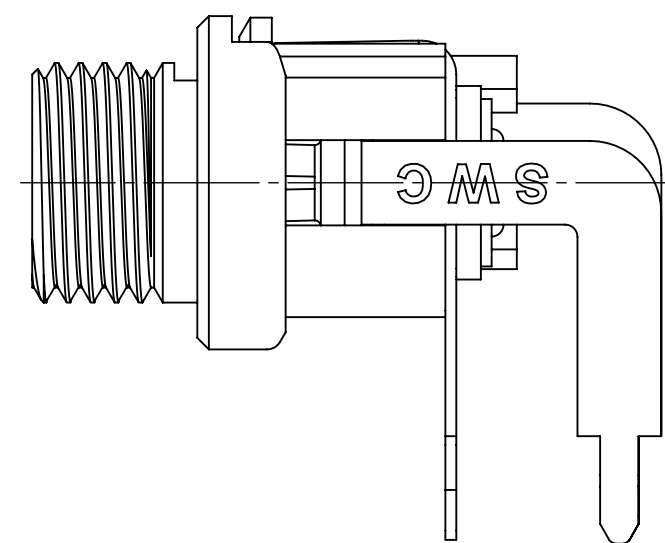
**712RA**  
STANDARD  
Ø 0.10 [2.5mm]  
CENTER PIN REF



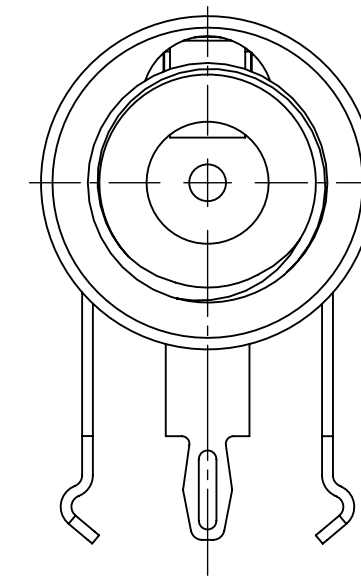
**712RAH**  
HIGH TEMPERATURE  
Ø 0.10 [2.5mm]  
CENTER PIN REF



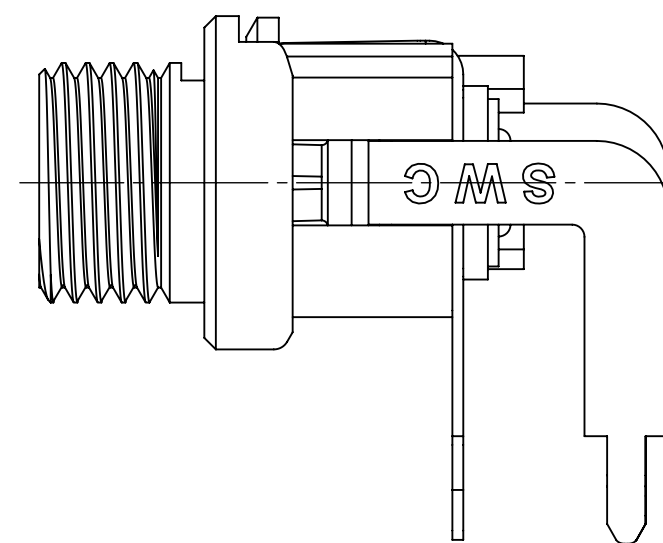
**722RA**  
STANDARD  
Ø 0.080 [2.0mm]  
CENTER PIN REF



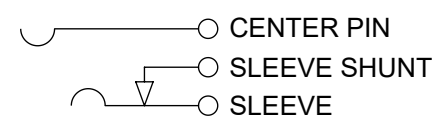
**722RAH**  
HIGH TEMPERATURE  
Ø 0.080 [2.0mm]  
CENTER PIN REF



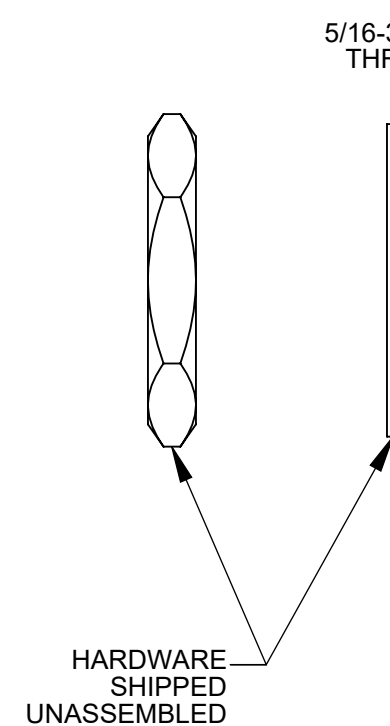
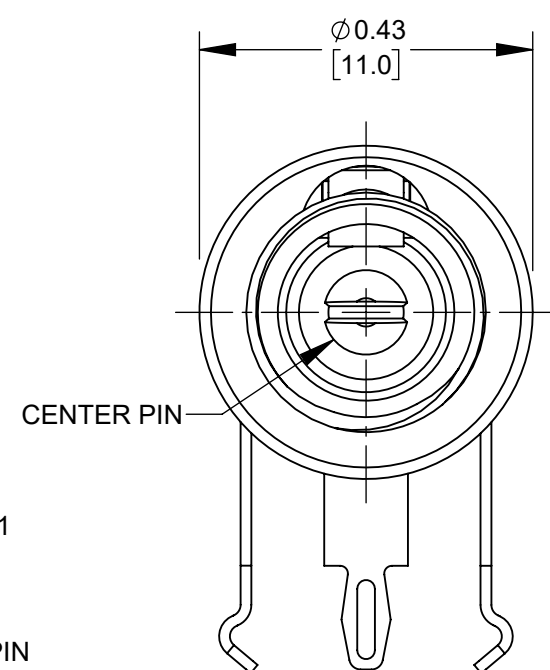
**732RA**  
STANDARD  
Ø 0.05 [1.3mm]  
CENTER PIN REF



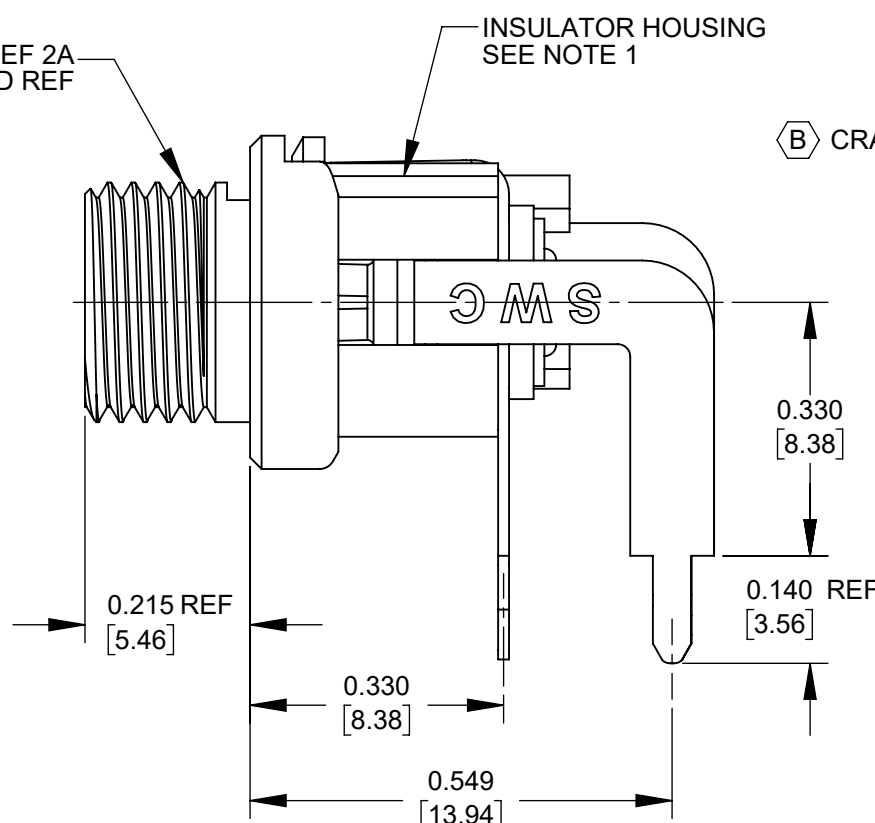
**732RAH**  
HIGH TEMPERATURE  
Ø 0.05 [1.3mm]  
CENTER PIN REF



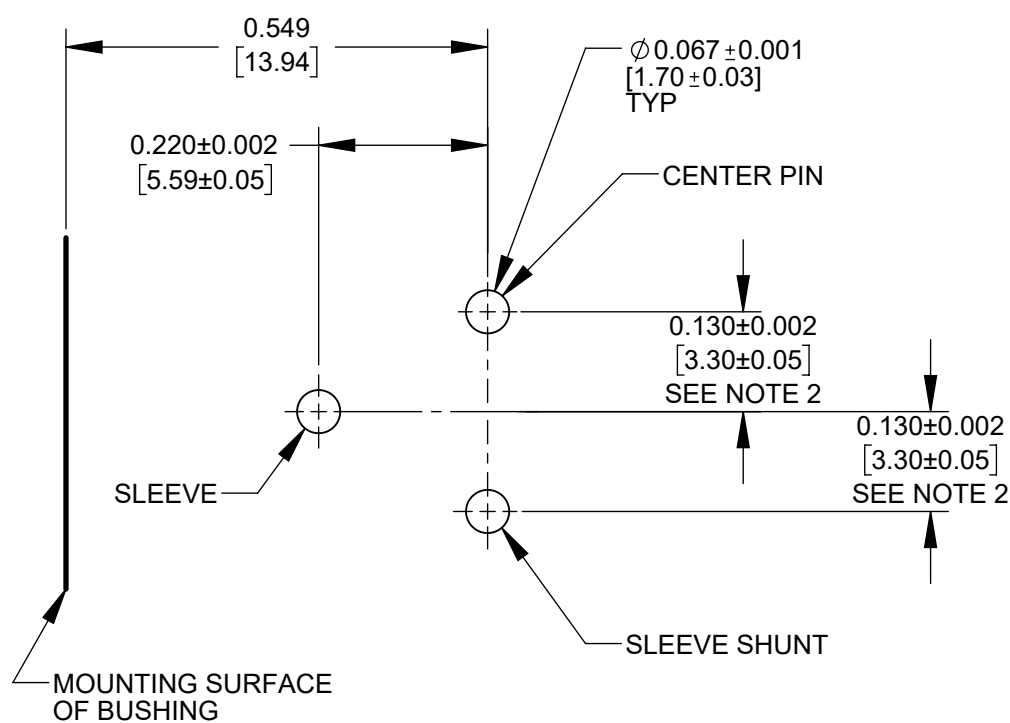
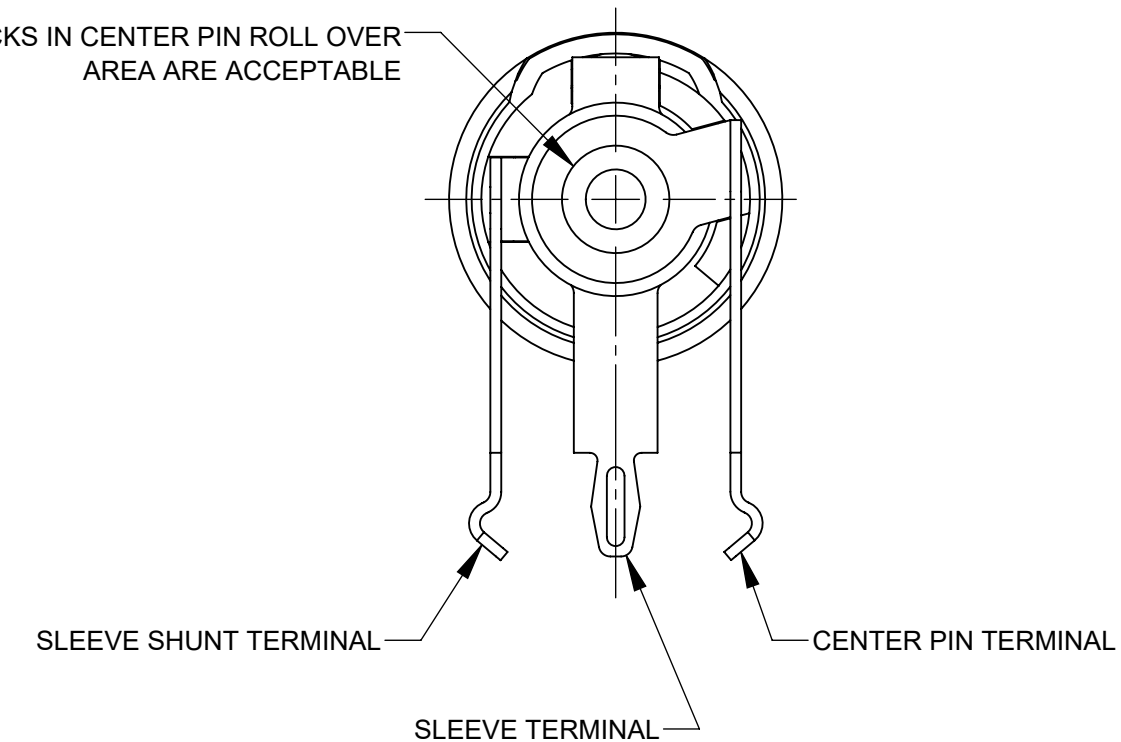
SCHEMATIC



5/16-32 NEF 2A  
THREAD REF



ⓑ CRACKS IN CENTER PIN ROLL OVER  
AREA ARE ACCEPTABLE



**RECOMMENDED PANEL LAYOUT**  
(COMPONENT SIDE)

NOTES:

- MATERIALS:  
BUSHING - COPPER ALLOY, NICKEL PLATED  
INSULATOR HOUSING -  
THERMOPLASTIC BLACK (STANDARD RA SERIES)  
THERMOPLASTIC WHITE (HIGH TEMPERATURE RAH SERIES)  
PIN, SPRING AND TERMINALS - COPPER ALLOY, SILVER PLATED  
INSULATORS - PHENOLIC  
HEX NUT - COPPER ALLOY, NICKEL PLATED  
FLAT WASHER - STEEL, NICKEL PLATED
- FOR HAND INSERTION USE 0.130 [3.30] SPACING.  
FOR AUTOMATED INSERTION USE 0.135 [3.43] SPACING.
- RA SERIES ARE RATED FOR 65°C MAX OPERATING TEMPERATURE  
RAH SERIES ARE RATED FOR 85°C MAX OPERATING TEMPERATURE
- ⓑ IT IS RECOMMENDED THAT THE JACK MOUNTING NUT BE TIGHTENED  
SNUG BY HAND BEFORE APPLYING A FINAL TIGHTENING TORQUE OF  
8-10 LB-IN USING HAND TOOLS ONLY. POWER DRIVER OR IMPACT  
DRIVERS ARE NOT RECOMMENDED.
- THE PRODUCTS IN THIS SERIES ARE RoHS COMPLIANT.

**CUSTOMER DRAWING**

|                                      |       |          |     |     |  |       |           |         |                   |
|--------------------------------------|-------|----------|-----|-----|--|-------|-----------|---------|-------------------|
| UNLESS OTHERWISE SPECIFIED           |       |          |     |     | THIS DRAWING DESCRIBES A DESIGN CONSIDERED PROPRIETARY IN NATURE, DEVELOPED AND MANUFACTURED BY SWITCHCRAFT INC. AND IS RELEASED ON A CONFIDENTIAL BASIS FOR IDENTIFICATION PURPOSES ONLY. |       |           |         |                   |
| 1. ALL DIMENSIONS IN INCHES [mm]     |       |          |     |     | SIZE   | WIDTH | MULT      | LBS/M   | TEMPER            |
| - TWO PLACE DECIMALS ±0.02 [0.5]     |       |          |     |     | FINISH SPEC No.  |       |           |         | MATERIAL SPEC No. |
| - THREE PLACE DECIMALS ±0.005 [0.13] |       |          |     |     | FIRST USED ON  |       | SCALE 4:1 |         |                   |
| B                                    | 28397 | 06/11/21 | PC  | TJK | DATE DRAWN   | BY    | CHKD      | APVD    | Switchcraft®      |
| A                                    | 27118 | 3/19/13  | TJK | TJK | 1/29/12  | AB    | 1/29/12   | 3/12/13 |                   |
| REVISIONS                            |       |          |     |     | NAME   |       |           |         |                   |
| DO NOT SCALE DRAWING                 |       |          |     |     | RIGHT ANGLE POWER JACK   |       |           |         |                   |
|                                      |       |          |     |     | SHEET 1 OF 1   |       |           |         |                   |
|                                      |       |          |     |     | PART No. 7_RA SERIES   |       |           |         |                   |
|                                      |       |          |     |     | 7_RAH SERIES   |       |           |         |                   |
|                                      |       |          |     |     | REV B  |       |           |         |                   |