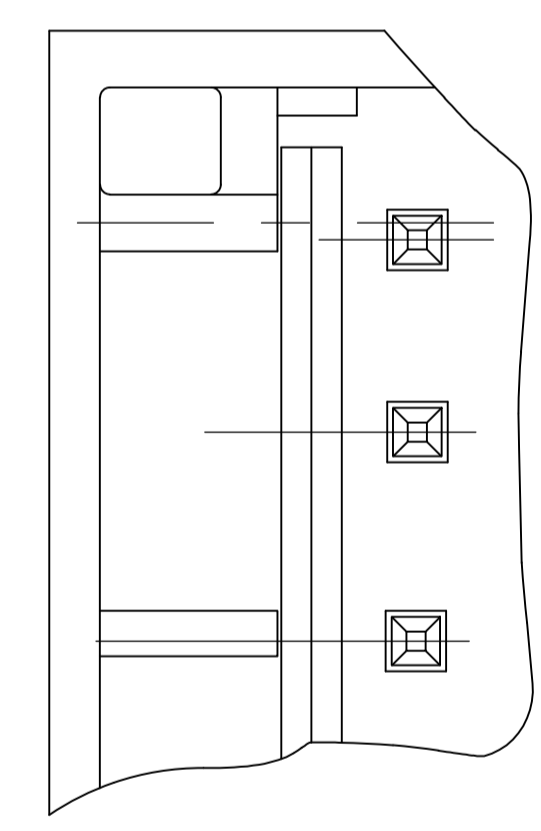
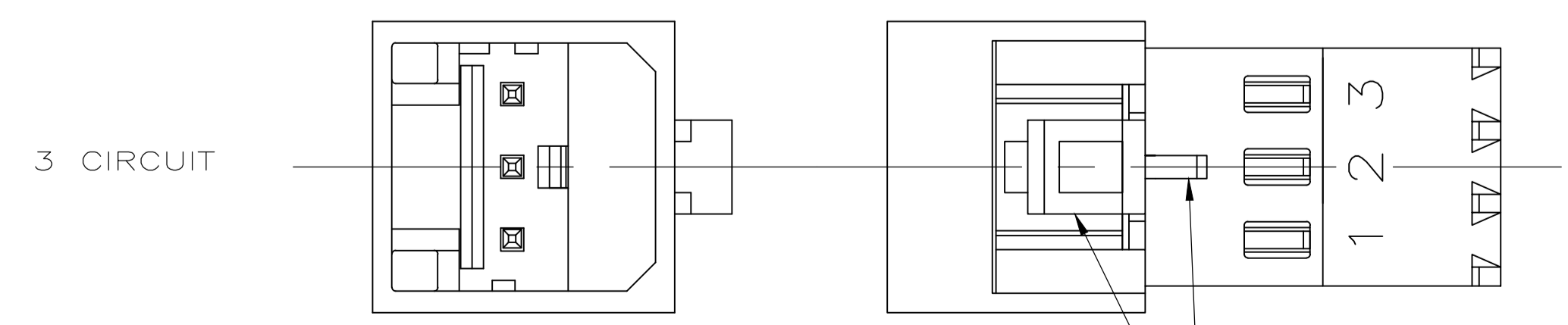
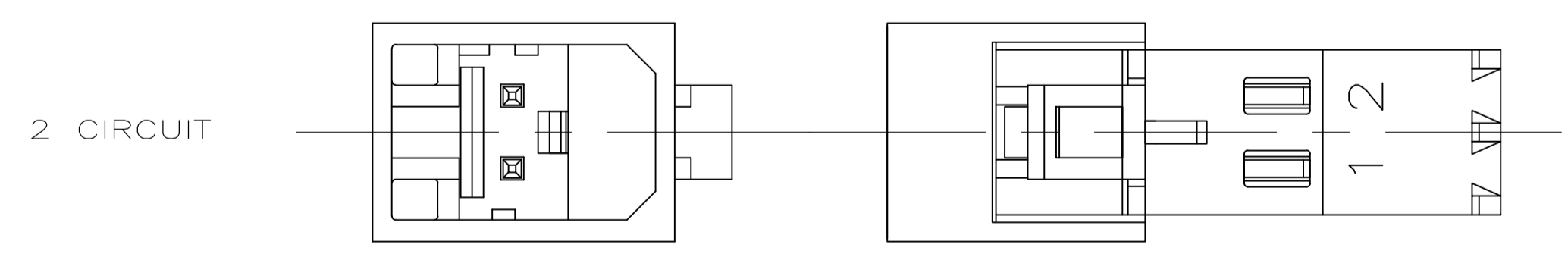


SECTION A-A



DETAIL B
SCALE 10:1
ALTERNATE CONFIGURATION



DETAIL A $\triangle 3$

- $\triangle 1$ MATERIAL:
HOUSING- NYLON UL94V-2 (RED).
CONTACTS- 0.30 [.012] THK COPPER ALLOY
PLATING : BRIGHT TIN-LEAD FOR 0.00203[.000080] MIN THK 647000-2 THRU 1-647000-9 OR MATTE TIN 0.00203[.000080] MIN THK. FOR 3-647000-2 THRU 4-647000-9.
- 2 CONTACTS ACCEPT 22 AWG (0.3 - 0.4 mm²) TIN PLATED SOLID, CONCENTRIC FUSED STRANDED, OR CONCENTRIC STRANDED (7 AND 19 STRAND) WIRE WITH 1.52 [.060] MAX INSULATION DIAMETER.
- $\triangle 3$ MATES WITH STANDARD MTA-100 CONNECTORS: OF THE SAME CIRCUIT SIZES WITH SIMILARLY PLATED CONTACTS WITH POLARIZING TABS-CIRCUIT SIZES 4-19 ONLY WITHOUT POLARIZING TABS-CIRCUIT SIZES 2 & 3.

DOES NOT MATE WITH MTA-100 CONNECTORS: WITH POLARIZING TABS-CIRCUIT SIZES 2 & 3 ONLY. (SEE DETAIL A) WITH BLOCKED CIRCUITS -ALL CIRCUIT SIZES. NOT RECOMMENDED FOR MATING WITH MTA-100 CONNECTOR WITHOUT POLARIZING TABS. CIRCUIT SIZES 4-19.
- $\triangle 4$ ACCESSORIES:
REPLACEMENT IDC CONTACTS: 647030-1.
COVERS: SEE TABLE
- $\triangle 5$ QUANTITY OF CENTRALLY POSITIONED RAILS VARIES WITH CIRCUIT SIZE. (SEE TABLE) LOCATION MAY DIFFER FROM EXAMPLE SHOWN.
- 6 DIMENSIONS IN BRACKETS ARE IN INCHES.
- $\triangle 7$ SIMILAR SIZED LOCK AND SINGLE TAB USED OR CIRCUITS 4 & 5.
- $\triangle 8$ QUANTITY OF GUSSET RIBS VARIES WITH CIRCUIT SIZE (SEE TABLE). LOCATION MAY DIFFER FROM EXAMPLE SHOWN.
- $\triangle 9$ INNER END RAIL PAIR NOT PRESENT FOR CIRCUIT SIZES 2 OR 3.
- $\triangle 10$ CIRCUIT ID MAY APPEAR FULLY NUMBERED OR SHOWING LOCATION 1 ONLY DEPENDING ON CIRCUIT SIZE.
- $\triangle 11$ OBSOLETE PARTS: OBSOLETE CIS STREAMLINING PER D.RENAUD/D.SINISI

| | | | |
|--|--|---|---|
| THIS DRAWING IS A CONTROLLED DOCUMENT. | | DIN R. LEWIS 28APR97 | TE Connectivity |
| DIMENSIONS: mm [INCHES] | | TOLERANCES UNLESS OTHERWISE SPECIFIED: 0 PLC ± - 1 PLC ± - 2 PLC ± 0.20 [.007] 3 PLC ± - 4 PLC ± - ANGLES ± - | |
| MATERIAL $\triangle 1$ | | FINISH $\triangle 1$ | NAME: MTA-100 POSTED CONNECTOR ASSEMBLY, CLOSED END, 22 AWG, TIN SIZE: A1 CAGE CODE: 00779 DRAWING NO: 647000 WEIGHT: - CUSTOMER DRAWING |
| 4805 (3/11) | | SCALE: 5:1 | SHEET: 1 OF 2 REV: H |

| QTY OF GUSSET RIBS | QTY OF CENTRAL RAILS | MM | IN | MM | IN | MM | IN | NO. OF CIRCUITS | PART NO |
|--------------------|----------------------|-------------|-------|-------|-------|-------|-------|-----------------|------------|
| 4 | 2 | 45.72 | 1.800 | 48.95 | 1.927 | 50.80 | 2.000 | 19 | 4-647000-9 |
| 4 | 2 | 43.18 | 1.700 | 46.41 | 1.827 | 48.26 | 1.900 | 18 | 4-647000-8 |
| 4 | 2 | 40.64 | 1.600 | 43.87 | 1.727 | 45.72 | 1.800 | 17 | 4-647000-7 |
| 4 | 2 | 38.10 | 1.500 | 41.33 | 1.627 | 43.18 | 1.700 | 16 | 4-647000-6 |
| 4 | 2 | 35.56 | 1.400 | 38.79 | 1.527 | 40.64 | 1.600 | 15 | 4-647000-5 |
| 4 | 2 | 33.02 | 1.300 | 36.25 | 1.427 | 38.10 | 1.500 | 14 | 4-647000-4 |
| 4 | 2 | 30.48 | 1.200 | 33.71 | 1.327 | 35.56 | 1.400 | 13 | 4-647000-3 |
| 2 | 1 | 27.94 | 1.100 | 31.17 | 1.227 | 33.02 | 1.300 | 12 | 4-647000-2 |
| 2 | 1 | 25.40 | 1.000 | 28.63 | 1.127 | 30.48 | 1.200 | 11 | 4-647000-1 |
| 2 | 1 | 22.86 | .900 | 26.09 | 1.027 | 27.94 | 1.100 | 10 | 4-647000-0 |
| 2 | 1 | 20.32 | .800 | 23.55 | .927 | 25.40 | 1.000 | 9 | 3-647000-9 |
| 2 | 0 | 17.78 | .700 | 21.01 | .827 | 22.86 | .900 | 8 | 3-647000-8 |
| 0 | 0 | 15.24 | .600 | 18.47 | .727 | 20.32 | .800 | 7 | 3-647000-7 |
| 0 | 0 | 12.70 | .500 | 15.93 | .627 | 17.78 | .700 | 6 | 3-647000-6 |
| 0 | 0 | 10.16 | .400 | 13.39 | .527 | 15.24 | .600 | 5 | 3-647000-5 |
| 0 | 0 | 7.62 | .300 | 10.85 | .427 | 12.70 | .500 | 4 | 3-647000-4 |
| 0 | 0 | 5.08 | .200 | 8.31 | .327 | 10.16 | .400 | 3 | 3-647000-3 |
| 0 | 0 | 2.54 | .100 | 5.77 | .227 | 7.62 | .300 | 2 | 3-647000-2 |
| 4 | 2 | 45.72 | 1.800 | 48.95 | 1.927 | 50.80 | 2.000 | 19 | 1-647000-9 |
| 4 | 2 | 43.18 | 1.700 | 46.41 | 1.827 | 48.26 | 1.900 | 18 | 1-647000-8 |
| 4 | 2 | 40.64 | 1.600 | 43.87 | 1.727 | 45.72 | 1.800 | 17 | 1-647000-7 |
| 4 | 2 | 38.10 | 1.500 | 41.33 | 1.627 | 43.18 | 1.700 | 16 | 1-647000-6 |
| 4 | 2 | 35.56 | 1.400 | 38.79 | 1.527 | 40.64 | 1.600 | 15 | 1-647000-5 |
| 4 | 2 | 33.02 | 1.300 | 36.25 | 1.427 | 38.10 | 1.500 | 14 | 1-647000-4 |
| 4 | 2 | 30.48 | 1.200 | 33.71 | 1.327 | 35.56 | 1.400 | 13 | 1-647000-3 |
| 2 | 1 | 27.94 | 1.100 | 31.17 | 1.227 | 33.02 | 1.300 | 12 | 1-647000-2 |
| 2 | 1 | 25.40 | 1.000 | 28.63 | 1.127 | 30.48 | 1.200 | 11 | 1-647000-1 |
| 2 | 1 | 22.86 | .900 | 26.09 | 1.027 | 27.94 | 1.100 | 10 | 1-647000-0 |
| 2 | 1 | 20.32 | .800 | 23.55 | .927 | 25.40 | 1.000 | 9 | 647000-9 |
| 2 | 0 | 17.78 | .700 | 21.01 | .827 | 22.86 | .900 | 8 | 647000-8 |
| 0 | 0 | 15.24 | .600 | 18.47 | .727 | 20.32 | .800 | 7 | 647000-7 |
| 0 | 0 | 12.70 | .500 | 15.93 | .627 | 17.78 | .700 | 6 | 647000-6 |
| 0 | 0 | 10.16 | .400 | 13.39 | .527 | 15.24 | .600 | 5 | 647000-5 |
| 0 | 0 | 7.62 | .300 | 10.85 | .427 | 12.70 | .500 | 4 | 647000-4 |
| 0 | 0 | 5.08 | .200 | 8.31 | .327 | 10.16 | .400 | 3 | 647000-3 |
| 0 | 0 | 2.54 | .100 | 5.77 | .227 | 7.62 | .300 | 2 | 647000-2 |
| DUST COVER | STRAIN RELIEF COVERS | | | | | | | | |
| 4 | 8 | ACCESSORIES | | | | | | | |

SUPERSEDED BY 4-647000-9
 SUPERSEDED BY 4-647000-8
 SUPERSEDED BY 4-647000-7
 OBSOLETE BY 4-647000-5
 SUPERSEDED BY 4-647000-3
 SUPERSEDED BY 4-647000-1
 OBSOLETE
 SUPERSEDED BY 3-647000-7

THIS DRAWING IS A CONTROLLED DOCUMENT.

| | | | | | |
|-------------------------|--|-----------------------|-----------------------|-------------------------|--|
| DIMENSIONS: mm [INCHES] | TOLERANCES UNLESS OTHERWISE SPECIFIED: | DWN: R. LEWIS 28APR97 | CHK: R. SWING 28APR97 | APVD: E. BEILES 28APR97 | NAME: MTA-100 POSTED CONNECTOR ASSEMBLY, CLOSED END, 22 AWG, TIN |
| 0 PLC ± - | 1 PLC ± - | 2 PLC ± - | 3 PLC ± - | 4 PLC ± - | ANGLES ± - |
| | | | | | |
| MATERIAL: | FINISH: | SIZE: A1 | CAGE CODE: 00779 | DRAWING NO: 647000 | RESTRICTED TO: - |
| CUSTOMER DRAWING | | SCALE: 1:1 | SHEET: 2 OF 2 | REV: H | |

TE Connectivity