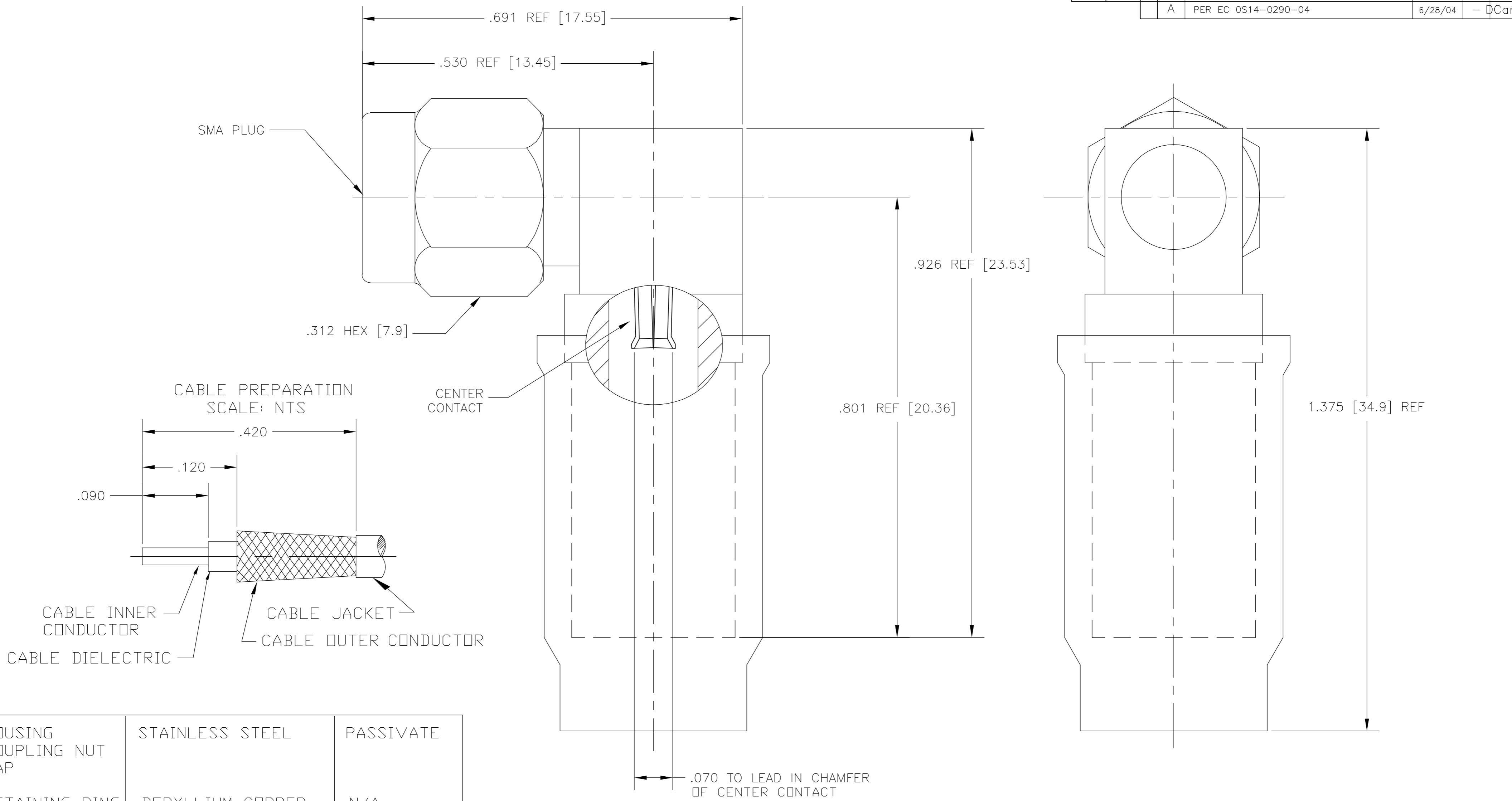


THIS DRAWING IS UNPUBLISHED. RELEASED FOR PUBLICATION  
 © COPYRIGHT BY TYCO ELECTRONICS CORPORATION. ALL RIGHTS RESERVED.

LOC	DIST	REVISIONS					
HC	00	P	LTR	DESCRIPTION	DATE	DWN	APVD
		A		PER EC OS14-0290-04	6/28/04	-	DCam



HOUSING COUPLING NUT CAP	STAINLESS STEEL	PASSIVATE
RETAINING RING	BERYLLIUM COPPER	N/A
GASKET	SILICONE RUBBER	N/A
FERRULE	COPPER	NICKEL
CONTACT	BERYLLIUM COPPER	NICKEL
DIELECTRIC	PTFE	N/A
SHRINK TUBING	POLYOLEFIN COMPOUND	N/A
COMPONENT	MATERIAL	FINISH

- NOTES:  
 1. CRIMP FERRULE USING .255 [6.48] HEX CRIMP DIE.  
 2. ASSEMBLE TO CABLE USING IS 408-8927

LMR 240	1-1403105-2	1403102-6	1408530-1	1408524-1
CABLE	SHRINK TUBING	FERRULE	HSG ASSY	PART NO.

THIS DRAWING IS A CONTROLLED DOCUMENT.

DIMENSIONS: INCHES [MM]	TOLERANCES UNLESS OTHERWISE SPECIFIED:	DWN DCam 12MAR2004	Tyco Electronics Corporation Norwood, MA 02062
	0 PLC ± - 1 PLC ± - 2 PLC ± - 3 PLC ± .005 4 PLC ± - ANGLES ± 1	CHK - APVD DCam 4/28/04	
MATERIAL -	FINISH -	PRODUCT SPEC - APPLICATION SPEC -	NAME SMA RIGHT ANGLE CABLE PLUG CRIMP ATTACHMENT FOR LMR 240 CABLE SIZE A2 CAGE CODE 00779 DRAWING NO C=1408524 RESTRICTED TO - WEIGHT - CUSTOMER DRAWING SCALE 8:1 SHEET 1 OF 1 REV A

1408524