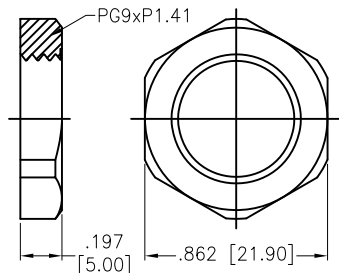


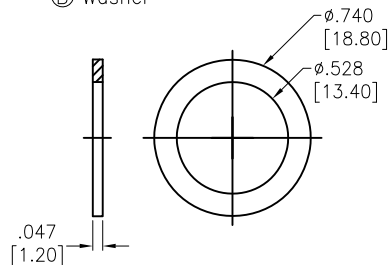
APPROVED: _____
 DATE: _____ TITLE: _____

Rev	AWO #	Description	Date	Appr
-		RELEASED	11/1/22	
A		UPDATE SPEC.	11/30/22	WX/RC

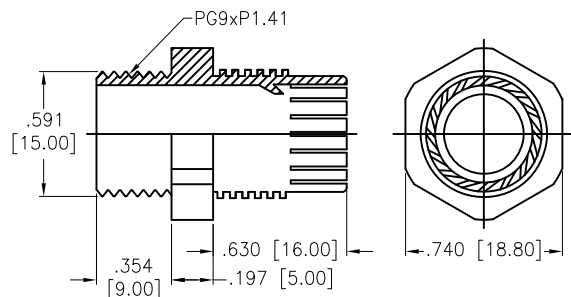
Ⓐ Lock Nut



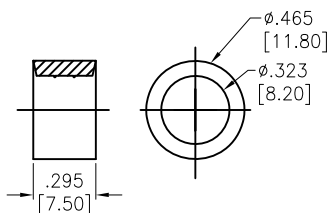
Ⓑ Washer



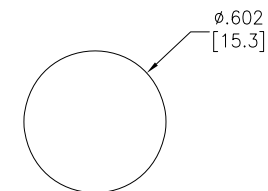
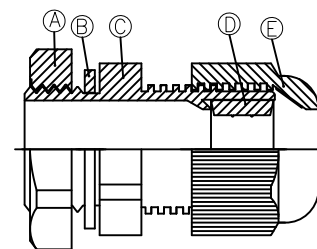
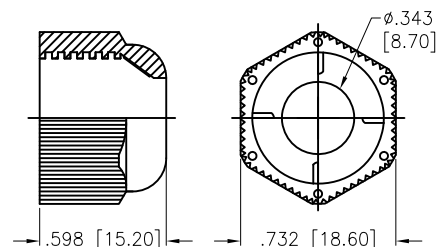
Ⓒ Body



Ⓓ Seal



Ⓔ Sealing Nut



RECOMMENDED
 PANEL CUT-OUT
 (.110 [2.8] MAX PANEL THICKNESS)

SPECIFICATIONS:

Material:

Lock Nut: PA66, rated UL 94V-2

Body: PA66, rated UL 94V-2

Sealing Nut: PA66, rated UL 94V-2

Washer: Nitrile Butylene

Seal: Nitrile Butylene

Mechanical:

Cable range O.D.: $\phi .177 \sim \phi .335 [4.50 \sim 8.50\text{mm}]$

Nut Torque: 1.2Nm Max.

Environmental:

Waterproof: IP68

Lead free, RoHS compliant.



UNLESS OTHERWISE SPECIFIED ALL DIMENSIONS ARE INCHES [MM]. TOLERANCES: EXCEPT AS NOTED		
INCHES	HOLES	
.X ± .10	∅X ± .10	
.XX ± .020	∅XX ± .015	
.XXX ± .015	∅XXX ± .010	
DRAWN	LH	11/1/22
CHECKED	RC	11/1/22
APPROVED		
THIS DRAWING CONTAINS INFORMATION THAT IS PROPRIETARY AND SHOULD NOT BE USED WITHOUT PRIOR WRITTEN PERMISSION FROM ADAM TECH		

ADAM TECH 909 Rahway Avenue,
 Union, NJ 07083
 Phone: 908-687-5000
 Fax: 908-687-5710

TITLE WATERPROOF CONNECTOR, PG9, 1 HOLE, CABLE GLAND, WATERPROOF: IP68		
SIZE X	PART NO. CG-P-9	REV. A
REF: S00211C	SCALE: NTS	SHEET 1 OF 1

6 5 4 3 2 1

6 5 4 3 2 1