

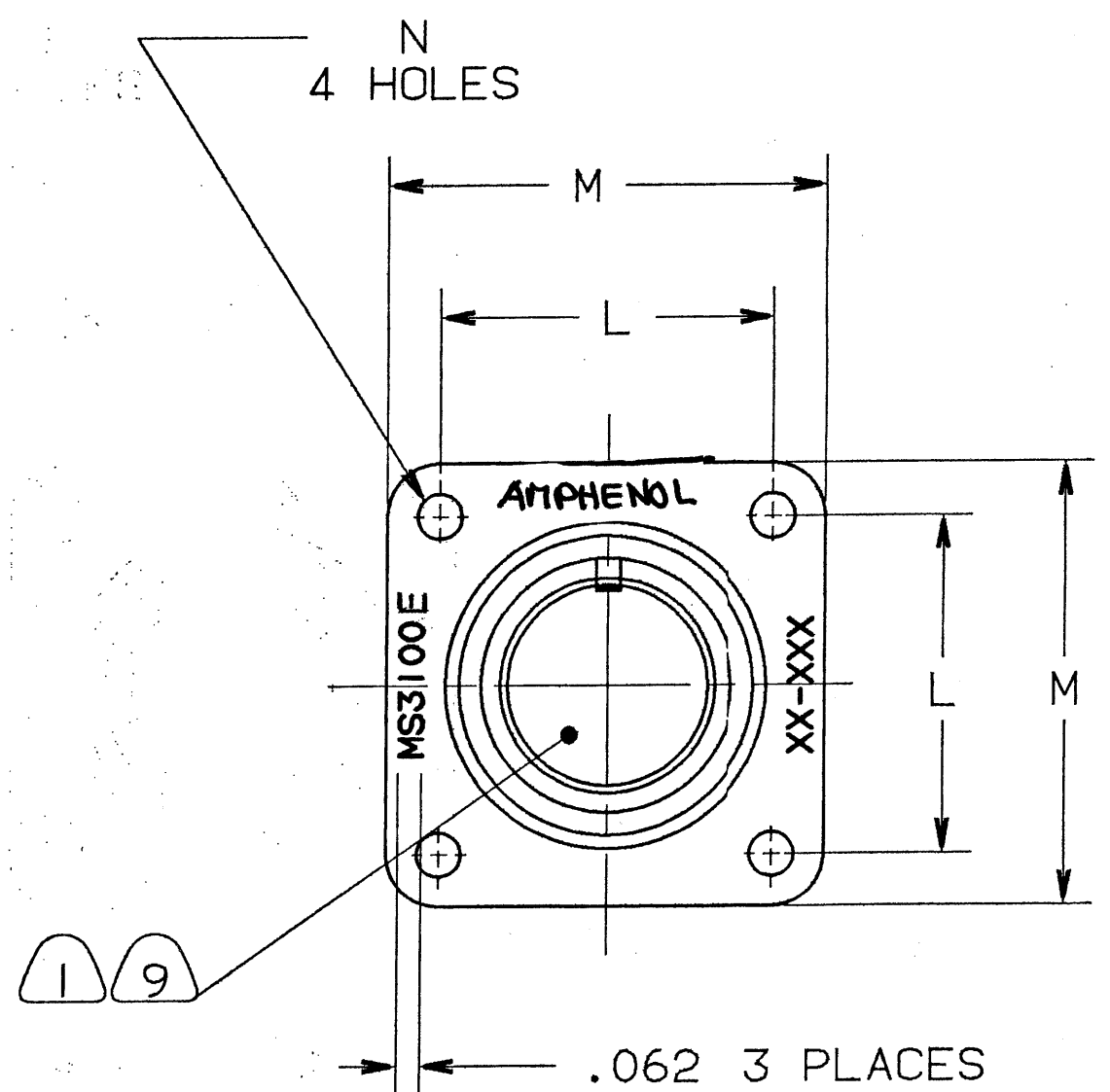
4

3

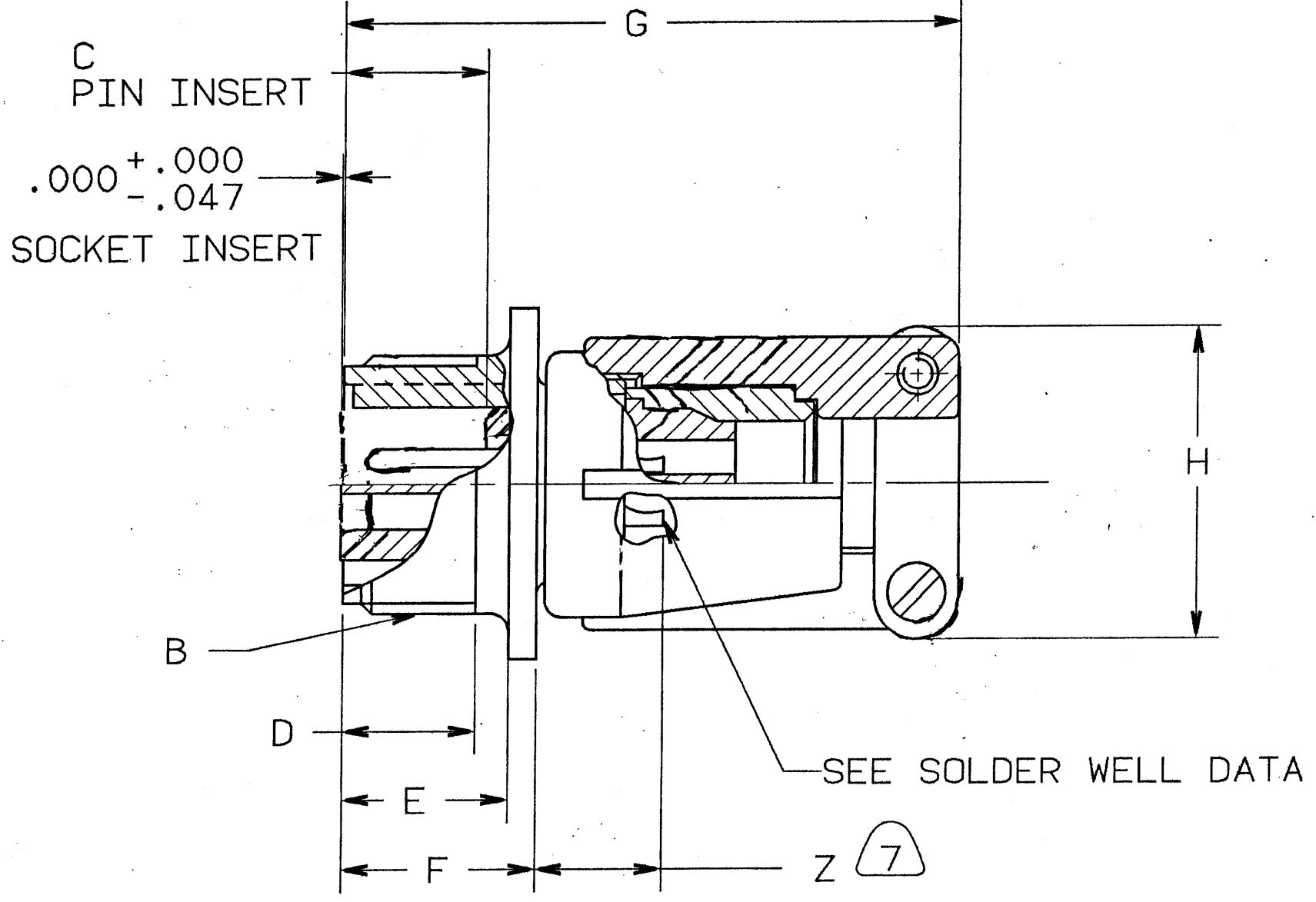
2

1

| REVISIONS | | | | |
|-----------------------------------|-----|---|------------------|----------|
| ZONE | LTR | DESCRIPTION | DATE | APPROVED |
| SEE RECORD DRAWING FOR REVISION A | | | | |
| B | | (CLI) REM'D P/L BLOCK & ASSOCIATED BALLOONS; CHG'D BCD REFS TO AAD ECN: 84803 | 11-3-00 JOKED | JED |



3 BLACK INK STAMP AMPHENOL, DATE CODE (9-3895) & MS NO. PER 9-3856-5
EXAMPLE:
AMPHENOL 9102 MS3100E20-12P



| | |
|---|-----------------------|
| 8 | REMOVED ON ECN: 84803 |
| 7 | |
| 6 | |
| 5 | |
| 4 | |
| 3 | |
| 2 | |
| 1 | |

UNLESS OTHERWISE SPECIFIED LINEAR DIMENSIONS ARE IN INCHES.
TOLERANCES: .XXX±.010, .XX ±.03, .X ±.1, ANGLES ±2°.
OTHER STANDARDS PER 9-3800 AND DOD-D-1000.
NOTE REF. = XX

| FIND NO. | QTY REQD. | FSCM NO. | PART NUMBER | DESCRIPTION | NOTE REF. |
|---------------------------|-----------|----------------------|-------------|-----------------------|-----------|
| PARTS LIST | | | | | |
| SPECIFICATIONS | | SIGNATURES | | DATES | |
| MATERIAL SPEC. N/A | | PREPARED MCELLIGOTT | | 12/17/90 | |
| | | CHECKED [Signature] | | 1-16-91 | |
| | | APPROVED [Signature] | | 1-16-91 | |
| | | APPROVED [Signature] | | 1-22-91 | |
| | | 1ST PART NO. | | 10-169058-*** | |
| PROCESS SPEC. SEE NOTE 10 | | SIZE C | | FSCM NO. 77820 | |
| | | SCALE 2/1 | | WT. REF 10-169008/040 | |
| | | SHEET 1 OF 2 | | REV. B | |

SEE SHEET 2
NOTES:

THE USE OF THIS DOCUMENT IS UNLIMITED. HOWEVER, DOCUMENTS REFERENCED HEREON MAY CONTAIN LIMITED RIGHTS DATA.

N/A
N/A
NEXT ASSEMBLY

10-169058/090

| ASSEMBLY NUMBER | MS. NO. | B THREAD CLASS 2A (PLATED) | C ±.031 | D MIN FULL THD | E +.010 -.000 | F +.020 -.010 | G MAX | H MAX | L ±.005 |
|-----------------|---------------|----------------------------------|------------|----------------------|---------------------|---------------------|----------|----------|------------|
| 10-169058-() | NOT AVAILABLE | | | | | | | | |
| 10-169060-() | NOT AVAILABLE | | | | | | | | |
| 10-169061-() | 3100E10SL-() | .6250-24 UNEF | .484 | .391 | .562 | .672 | 2.129 | .896 | .719 |
| 10-169062-() | 3100E12S-() | .7500-20 UNEF | .484 | .450 | .562 | .672 | 2.129 | .896 | .812 |
| 10-169063-() | 3100E12-() | .7500-20 UNEF | .672 | .625 | .750 | .860 | 2.129 | .896 | .812 |
| 10-169064-() | 3100E14S-() | .8750-20 UNEF | .484 | .450 | .562 | .672 | 2.201 | 1.021 | .906 |
| 10-169065-() | 3100E14-() | .8750-20 UNEF | .672 | .625 | .750 | .860 | 2.524 | 1.021 | .906 |
| 10-169066-() | 3100E16S-() | 1.0000-20 UNEF | .484 | .450 | .562 | .672 | 2.201 | 1.151 | .969 |
| 10-169067-() | 3100E16-() | 1.0000-20 UNEF | .672 | .625 | .750 | .860 | 2.524 | 1.151 | .969 |
| 10-169068-() | 3100E18-() | 1.1250-18 UNEF | | | | .891 | 2.596 | 1.242 | 1.063 |
| 10-169070-() | 3100E20-() | 1.2500-18 UNEF | | | | .891 | 2.654 | 1.499 | 1.156 |
| 10-169072-() | 3100E22-() | 1.3750-18 UNEF | | | | .891 | 2.654 | 1.499 | 1.250 |
| 10-169074-() | 3100E24-() | 1.5000-18 UNEF | | | .812 | .953 | 2.885 | 1.781 | 1.375 |
| 10-169078-() | 3100E28-() | 1.7500-18 UNS | | | .812 | .953 | 2.885 | 1.781 | 1.562 |
| 10-169082-() | 3100E32-() | 2.0000-18 UNS | | | .875 | 1.031 | 2.943 | 2.087 | 1.750 |
| 10-169086-() | 3100E36-() | 2.2500-16 UN | | | | | 2.943 | 2.281 | 1.938 |
| 10-169090-() | 3100E40-() | 2.5000-16 UN | | | | | 3.068 | 2.581 | 2.188 |

| ASSEMBLY NUMBER | M | N DIA +.004 -.002 | Z MAX |
|-----------------|---------------|----------------------------|----------|
| 10-169058-() | NOT AVAILABLE | | |
| 10-169060-() | NOT AVAILABLE | | |
| 10-169061-() | 1.000 | .120 | .472 |
| 10-169062-() | 1.094 | | .472 |
| 10-169063-() | 1.094 | | .722 |
| 10-169064-() | 1.188 | | .472 |
| 10-169065-() | 1.188 | | .722 |
| 10-169066-() | 1.281 | | .472 |
| 10-169067-() | 1.281 | | .722 |
| 10-169068-() | 1.375 | | .691 |
| 10-169070-() | 1.500 | | .691 |
| 10-169072-() | 1.625 | | .691 |
| 10-169074-() | 1.750 | .147 | .628 |
| 10-169078-() | 2.000 | .147 | .628 |
| 10-169082-() | 2.250 | .173 | .550 |
| 10-169086-() | 2.500 | .173 | .550 |
| 10-169090-() | 2.750 | .173 | .550 |

| STANADARD SOLDER WELL DATA | | | | | | THERMOCOUPLE | |
|----------------------------|---------------------|---------------------|---------------------|---------------------|---------------------|---------------------|---------------------|
| CONTACT SIZE | 0 | 4 | 8 | 12 | 16 | 12 | 16 |
| WELL DIA | .469 +.005 -.003 | .332 +.005 -.003 | .208 +.004 -.002 | .116 +.004 -.002 | .078 +.004 -.002 | .125 +.004 -.002 | .094 +.004 -.002 |
| WELL DEPTH | +.031 -.000 | .625 | .625 | .500 | .375 | .250 | .250 |

| THERMOCOUPLE | |
|--------------|----------------|
| MATERIAL | IDENTIFICATION |
| CHROMEL | WHITE |
| ALUMEL | GREEN |
| IRON | BLACK |
| CONSTANTAN | YELLOW |

- FOR CONTACT SIZE, SPACING & SERVICE RATING SEE MIL-STD-1651.
- SEE SEPARATE PARTS LIST FOR COMPONENT PART NUMBERS AND QUANTITIES.
- SEE WORK ORDER FOR PERMISSIBLE ADDITIONAL OR ALTERNATE STAMPING.
- FOR MATING CONNECTOR ASSEMBLY, SEE DRAWING 10-169658/690 & OTHERS.
- TO COMPLETE, ADD APPLICABLE INSERT ARRANGEMENT SUFFIX PER 9-2437.
- UNITS MEET THE REQUIREMENTS OF MIL-C-5015.
- FOR SIZE "0" CONTACT ONLY, INCREASE Z DIMENSION BY .312.
- PACKAGE PER PRODUCTION PROCESS SHEET.
- INSERTS AND CONTACTS ARE REMOVABLE.
- PROCESS SPEC:
ASSY 9-3238-1
TEST 9-3106-2
9-2437, 9-3856-5, 9-3895
- ALL UNUSED GROMMET HOLES MUST BE FILLED WITH SEALING PLUGS.