

4

3

2

1

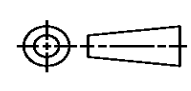
THIS DRAWING IS UNPUBLISHED. RELEASED FOR PUBLICATION
© COPYRIGHT ALL RIGHTS RESERVED.

LOC	DIST	REVISIONS			
P	LTR	DESCRIPTION	DATE	DWN	APVD
	K1	ECR-16-009823	25JUL2016	GK	SD

REPLACED BY OCEAN STYLE APPLICATOR PART NUMBER 2150108-1

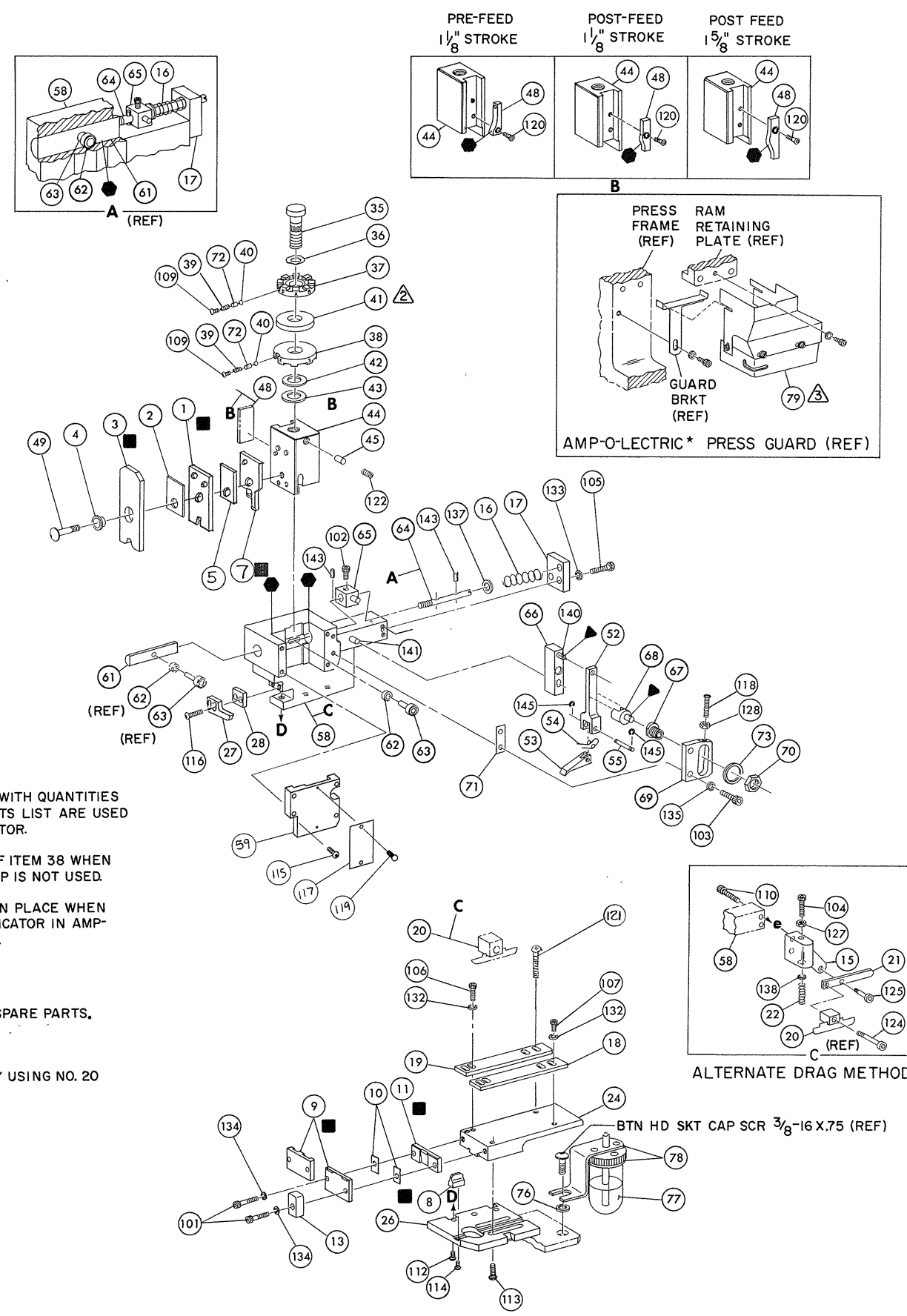
FOR REPLACEMENT PARTS FOR APPLICATOR 466415-1
REFER TO ADDITIONAL PAGE(S). SPARE PARTS KIT (IF LISTED)
WILL REMAIN AVAILABLE.

THE REPLACEMENT OCEAN STYLE APPLICATOR HAS THE
SAME TERMINATOR/PRESS INTERFACE AS APPLICATOR
466415-1

THIS DRAWING IS A CONTROLLED DOCUMENT.		DWN	GOPALAKRISHNA HV		
DIMENSIONS:		CHK	GOPALAKRISHNA HV		
		TOLERANCES UNLESS OTHERWISE SPECIFIED:		APVD	
		0 PLC ± 1 PLC ± 2 PLC ± 3 PLC ± 4 PLC ± ANGLES ±		STOUGH DALE	
MATERIAL		PRODUCT SPEC		NAME	
FINISH		APPLICATION SPEC		MINIATURE QUICK CHANGE APPLICATOR END FEED .110 FASTON	
		WEIGHT	SIZE	CAGE CODE	DRAWING NO
			A3		©- 466415-1
		CUSTOMER DRAWING		SCALE	SHEET 1 OF 2 REV K1



THIS IS A CONTROLLED DOCUMENT.



- NOTES:**
- 1. ONLY THE ITEMS WITH QUANTITIES SPECIFIED ON PARTS LIST ARE USED ON THIS APPLICATOR.
 - 2. USED IN PLACE OF ITEM 38 WHEN INSULATION CRIMP IS NOT USED.
 - 3. GUARD MUST BE IN PLACE WHEN OPERATING APPLICATOR IN AMP-O-LECTRIC PRESS.
- KEY:**
- RECOMMENDED SPARE PARTS.
 - ▲ LUBRICATE DAILY USING NO. 20 MACHINE OIL.
 - GREASE LIGHTLY.

QTY	PART NO	DESCRIPTION	ITEM NO	QTY	PART NO	DESCRIPTION	ITEM NO
2	21045-3	RING, RETAINING 'C' (.187 DIA) FEED PIN	145	1	454220-2	CAP, RAM	59
2	5-21028-1	PIN, SLOT SPG (.12 DIA X .50) FD ADJ ROD	144	1	453736-2	HOUSING	58
1	1-21030-7	PIN, DOWEL (.187 DIA X 1.50) HOUSING	143				57
1	1-21030-1	PIN, DOWEL (.187 DIA X .50) LEVER	142				56
1	22260-5	WASHER, FLAT (NO 6) DRAG SPRING	141	1	240624-1	PIN, FEED FINGER	55
1	21899-4	WASHER, FLAT (5/16 DIA) SCR ADJ	140	1	691499-1	SPRING, FEED FINGER	54
1	21024-5	WASHER, LOCK (NO 10) FEED ADJ PLATE	139	1	690584-9	FINGER, FEED	53
2	21024-5	WASHER, LOCK (NO 10) FEED ROD GUIDE	138	1	240634-1	LEVER, TERMINAL	52
2	21024-4	WASHER, LOCK (NO 8) STRIP GUIDE	137				51
2	21024-4	WASHER, LOCK (NO 8) SHEAR BLADE	136				50
2	21024-5	WASHER, LOCK (NO 10) FEED ADJ PLATE	135	1	690686-2	BOLT, CRIMPER	49
2	21024-5	WASHER, LOCK (NO 10) FEED ROD GUIDE	134	1	690501-4	CAM, POST-FEED 1/8 STROKE	48
4	21024-4	WASHER, LOCK (NO 8) STRIP GUIDE	133				47
1	21024-4	WASHER, LOCK (NO 8) SHEAR BLADE	132				46
1	21018-4	NUT, HEX MACH (4-40) DRAG	131	1	690191-1	PLUG, NYLON	45
1	21068-5	NUT, HEX MACH (6-32) FD ADJ PLATE	130	1	455674-6	RAM	44
1	21018-7	NUT, HEX MACH (10-32) DRAG SPRING	129	1	690125-1	WASHER, LAMINATED	43
1	21022-2	NUT, HEX SELF-LKG (8-32) DRAG STUD	128	1	690124-1	WASHER, RAM	42
1	5-21004-7	SCR, SKT HD SHLD (250 DIA X .25) DRAG ARM	127	2	23241-6	SPACER, DISC	41
1	21004-5	SCR, SKT HD SHLD (250 DIA X 1.00) DRAG	126	2	690170-1	BALL, STEEL	40
1	4-21078-8	SCR, SKT SET OVAL POINT (4-40 X .75) DRAG	125	2	690170-1	SPRING, COMPRESSION	39
1	21009-2	SCR, SKT SET (1/4-20 X 25) (LOC-WEL) RAM	124	1	690142-1	DISC, INSULATION	38
1	2-21002-2	SCR, BTN HD (8-32 X .50) STRIP GUIDE	123	1	9-690692-9	DISC, WIRE	37
1	1-21002-7	SCR, BTN HD SKT CAP (6-32 X .38) CAM	122	1	22480-5	WASHER, SPRING	36
2	21017-2	SCR, DRIVE (2 X .19) ID PLATE	121	1	690212-1	POST, RAM	35
1	3-21064-2	SCR, RD HD MACH (6-32 X 1.50) FEED ADJ	120				34
1	461264-1	PLATE, ID	119				33
2	2-21002-3	SCR, BTN HD SKT CAP (8-32 X .62) STRIPPER	118		458980-	APPLICATOR, BASIC (SUB ASSY)	32
4	2-21002-9	SCR, BTN HD SKT CAP (10-32 X .75) HSG CAP	117				31
1	22733-8	SCR, BTN HD SKT CAP (8-32 X .38) (LOC-WEL) ANVIL	116				30
4	3-21002-3	SCR, BTN HD SKT CAP (1/4-20 X .50) STR GDE PL	115				29
3	2-22733-9	SCR, BTN HD SKT CAP (1/4-20 X .75) BASE PL	114	1	2690451-5	SPACER, STRIPPER	28
2	2-21000-4	SCR, SKT HD CAP (6-32 X 1.00) DRAG ADAPTOR	113	1	240639-4	STRIPPER	27
2	23030-1	SCR, SKT HD CAP (6-32 X .25) (LOC-WEL) CP DISC	112	1	459717-1	PLATE, BASE	26
2	2-21000-5	SCR, SKT HD CAP (8-32 X .25) STRIP GUIDE, FRONT	111		22354-8	DRAG, STUD	25
1	2-21000-6	SCR, SKT HD CAP (8-32 X .38) STRIP GUIDE, REAR	110	1	455678-1	PLATE, STRIP GUIDE	24
1	3-21000-7	SCR, SKT HD CAP (10-32 X .75) FD ROD GUIDE	109	1	7-22282-5	SPRING, DRAG	23
1	3-21000-9	SCR, SKT HD CAP (10-32 X 1.00) DRAG SPRING	108	1	240636-1	LEVER, DRAG	22
2	3-21000-6	SCR, SKT HD CAP (10-32 X .62) FD ADJ PLATE	107	1	1-240696-1	DRAG, STOCK	21
1	3-21000-4	SCR, SKT HD CAP (10-32 X .38) PIVOT BLK	106	1	2-458030-8	GUIDE, STRIP (REAR)	20
2	3-21000-8	SCR, SKT HD CAP (10-32 X .88) SHEAR PLATE	105	1	454204-1	GUIDE, STRIP (FRONT)	19
REF	455745-1	GUARD WINDOW	104	1	454178-1	GUIDE, FEED ROD	18
1	465184-9	LUBRICATOR ASSY	103	1	4-22284-9	SPRING, FEED RETURN	17
1	455985-1	OIL, LUBRICATING	102	1	454665-4	ADAPTER, DRAG	16
1	454406-1	SPACER, LUB BRACKET	101	1	464524-1	SPACER, DRAG ADAPTER	15
1	458109-1	WASHER, FLAT (SPECIAL)	79				14
2	690603-1	SPRING, ASSIST	78				13
1	690517-1	SPACER	77				12
1	22594-8	NUT, HEX	76	1	240644-1	PLATE, REAR SHEAR	11
1	240628-1	PLATE, ADJ	75				10
1	240626-1	SHAFT, PIVOT	74	1	2-690482-4	PLATE, FRONT SHEAR	9
1	240633-1	BUSHING	73	1	694442-3	ANVIL	8
1	455680-1	LEVER, INTERMEDIATE	72	1	462374-1	BLADE, SLUG	7
1	240629-1	BLOCK, PIVOT	71				6
1	240632-2	SCREW, ADJ	70	1	2-455888-3	HOLD DOWN, TERMINAL	5
1	240659-3	PIN, CAM ROLLER	69	1	238009-1	SPACER, SHEAR BLADE	4
1	240658-1	CAM, ROLLER	68	1	4-456134-0	SPACER, TUBULAR	3
1	454398-1	ROD, FEED	67	1	455888-1	CRIMPER, INSULATION	2
			66	1	462373-1	SPACER, INSULATION	1
			65				1
			64				1
			63				1
			62				1
			61				1
			60				1

CRIMPING DATA				APPLICATOR WILL APPLY	
PAD LTR	CRIMP HEIGHT	WIRE SIZE	WIRE STRIP LENGTH		
A	.046	18			61481
B	.040	20			62336
C	.037	22			62840
D	NOT USED				63101
					1212171

CRIMP	SIZE	TYPE	FEED	APPL INST
WIRE	.062	F	430	A1 8039
INSUL	.100	F		

WIRE RANGE 18 TO 22 INSULATION RANGE .060 TO .100 PRESS NO. 11

REMARKS AMPOMATOR #6

REMARKS	NO	REV
APPL USED ON MACHINE PART NO	MACH SERIAL NO	TO APPLY TERMINAL SPEC 114-2028
CUSTOMER NAME	APPL SERIAL NO	DISTRIBUTION
ADDRESS	PURCHASE ORDER	ORIGINAL
CITY	ENG APP	CUSTOMER COPY
		FIELD ENG COPY

REV	DESCRIPTION	DATE	BY	APP'D	DATE	BY	APP'D
K	ECN 0150-0303-03	11/17/93	J				
J	0150-1111-01	11/17/93	J				
I	0150-7467-97	11/17/93	J				
H	0150-6535-95	11/17/93	J				
G	ECN 0150-4626-93	11/17/93	J				
F	0150-4376-93	11/17/93	J				
E	ECN A-153588	11/17/93	J				

LOC A NO 466415-1 REV K

NAME MINIATURE QUICK CHANGE APPLICATOR

END FEED (110 FASTON)