



FocusLCDs.com
LCDs MADE SIMPLE®

Ph. 480-503-4295 | NOPP@FocusLCD.com

TFT | CHARACTER | UWVD | FSC | SEGMENT | CUSTOM | REPLACEMENT

Character Display Module

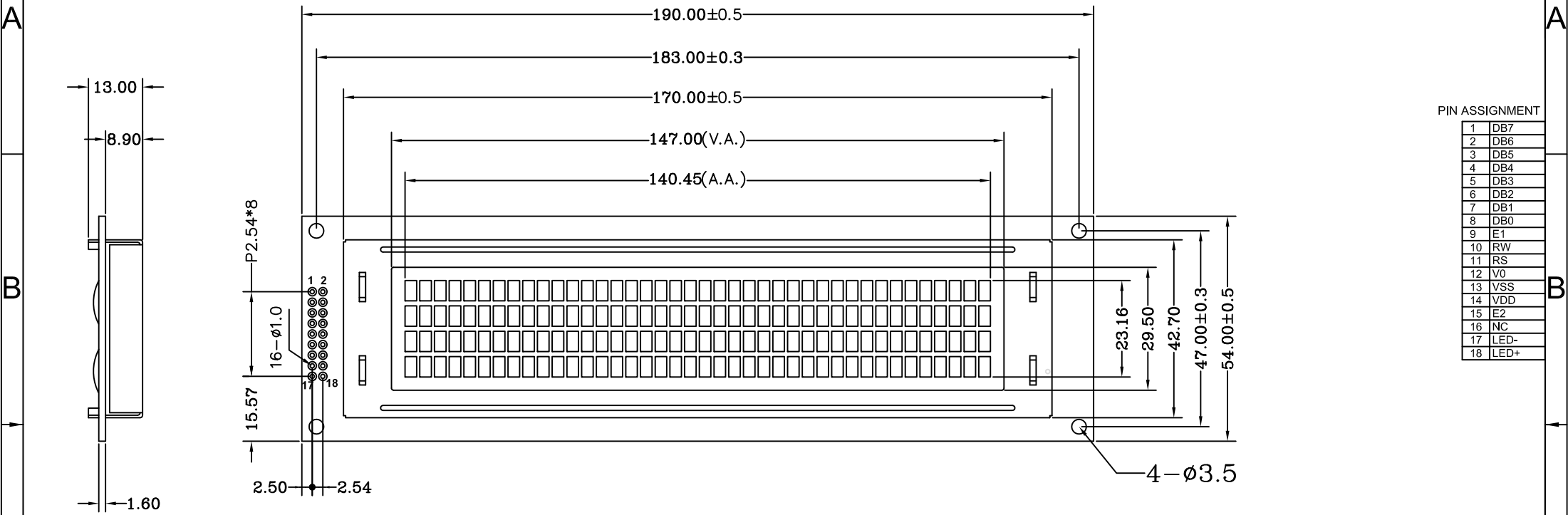
Part Number

C404A-FTB-LW65

Overview

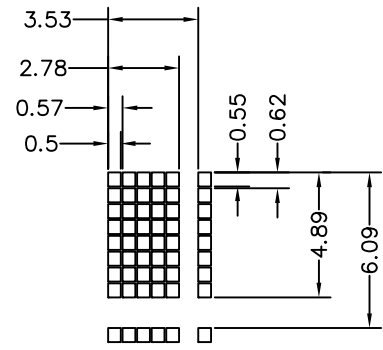
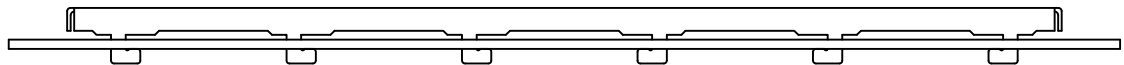
Character LCD: 40x4 (190x54), FSTN gray positive, Transflective, Blue LED Backlight, Wide Temp (-20°- 70° operating/-30°- 80° storage), Bottom View, 5V LED, 5V LCD, RoHS Compliant. Controller: ST7066U

REV	DESCRIPTION:	DATE
1.0	First	





PIN ASSIGNMENT

1	DB7
2	DB6
3	DB5
4	DB4
5	DB3
6	DB2
7	DB1
8	DB0
9	E1
10	RW
11	RS
12	V0
13	VSS
14	VDD
15	E2
16	NC
17	LED-
18	LED+



Specification:

- 1). Driving: Duty:1/16, Bias:1/5, VDD:5.0V, VLCD=0V~13.5V(6.5V)
- 2). Display Type: FSTN/Positive/Transflective/6:00 Visual Angle
- 3). Operating temp: -20°C~+70°C/Storage Temp: -30°C~+80°C
- 4). Driver : ST7066U, R6=1.3K ohm
- 5). Backlight Type: Edge/Blue/Vled5.0V/60mA
- 6). RoHS Compliant

Model Name: C404A-FTB-LW65		 FOCUS LCDs LCDs MADE SIMPLE™	
GENERAL TOL: ± 0.3			
APPROVALS	DATE	DRAWN NO.	SCALE:
DWN:			
CHK:		SIZE: A4	UNIT: mm
APP:			Page: