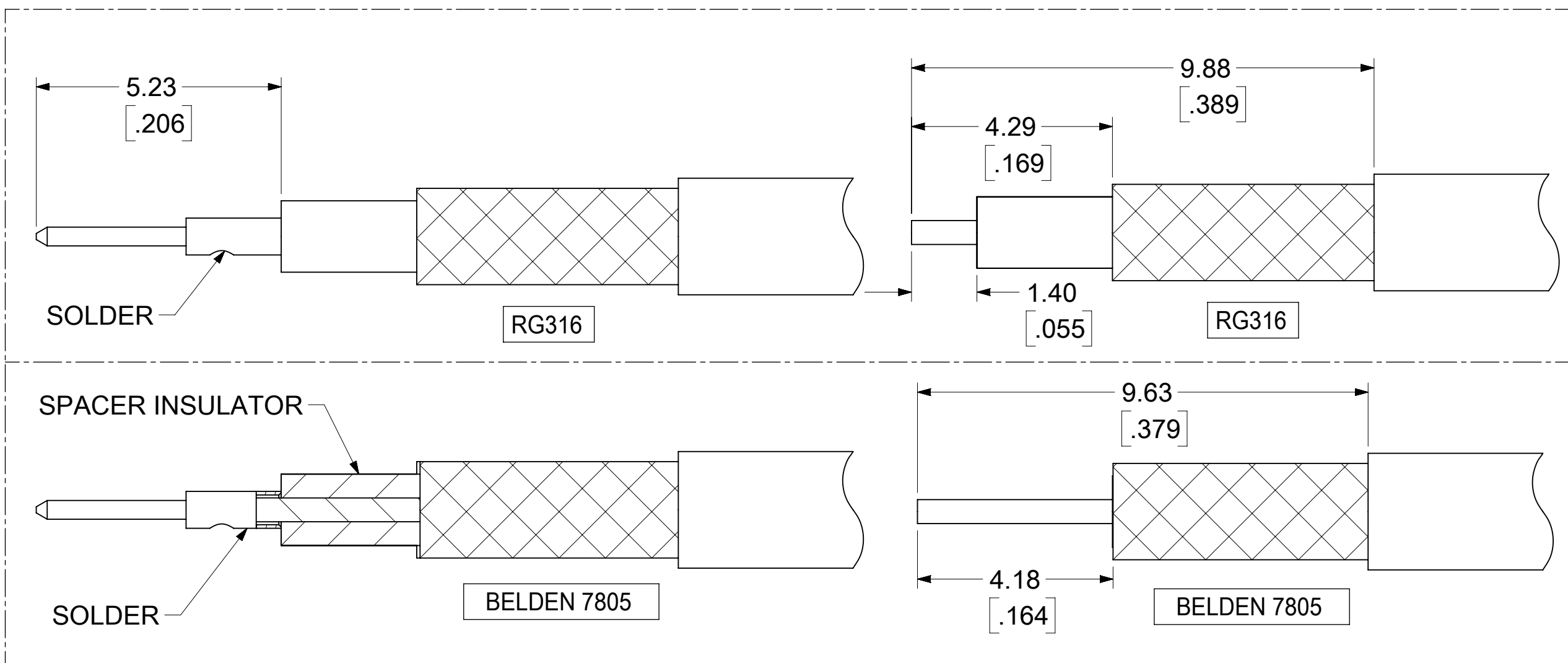
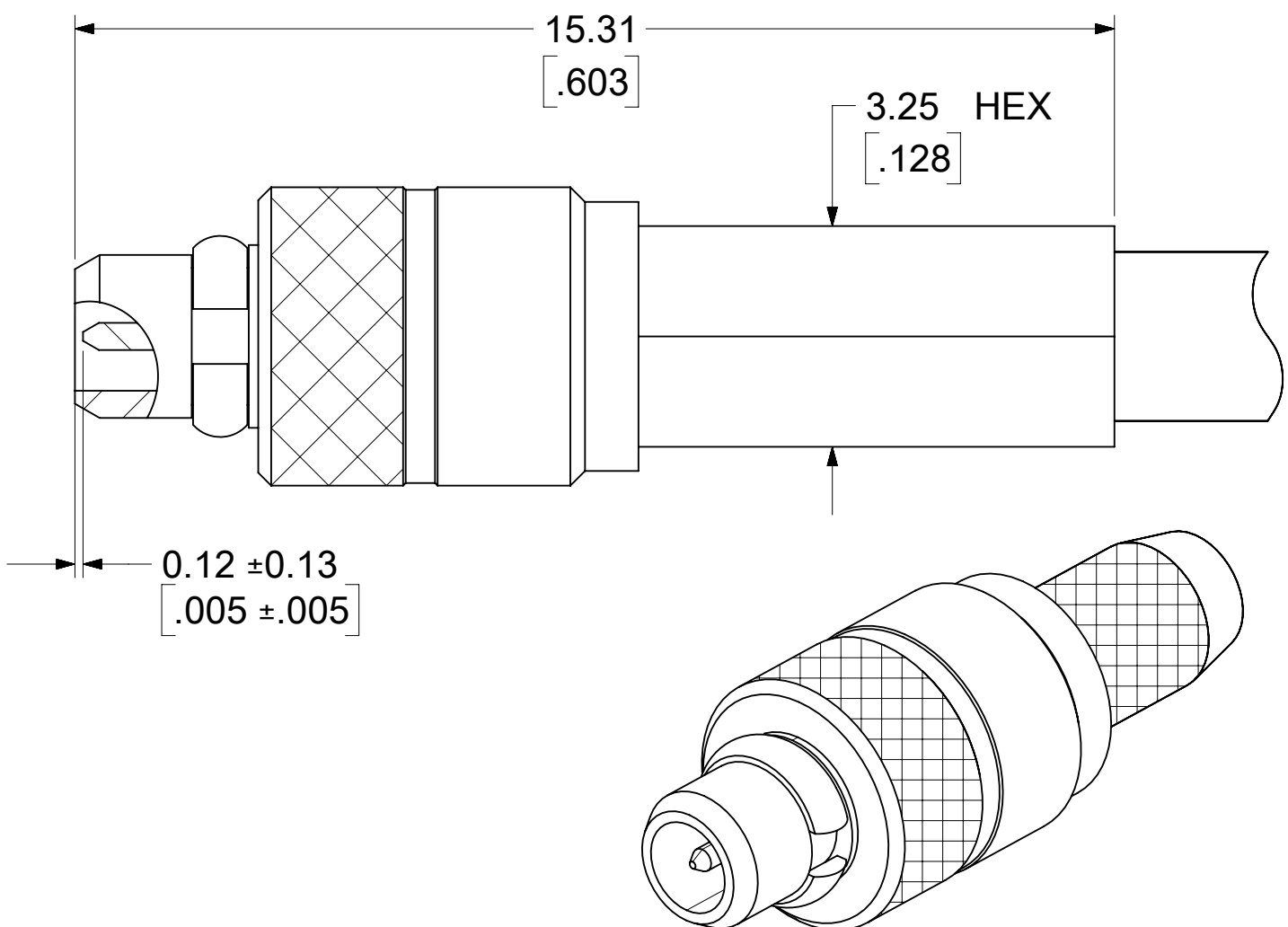
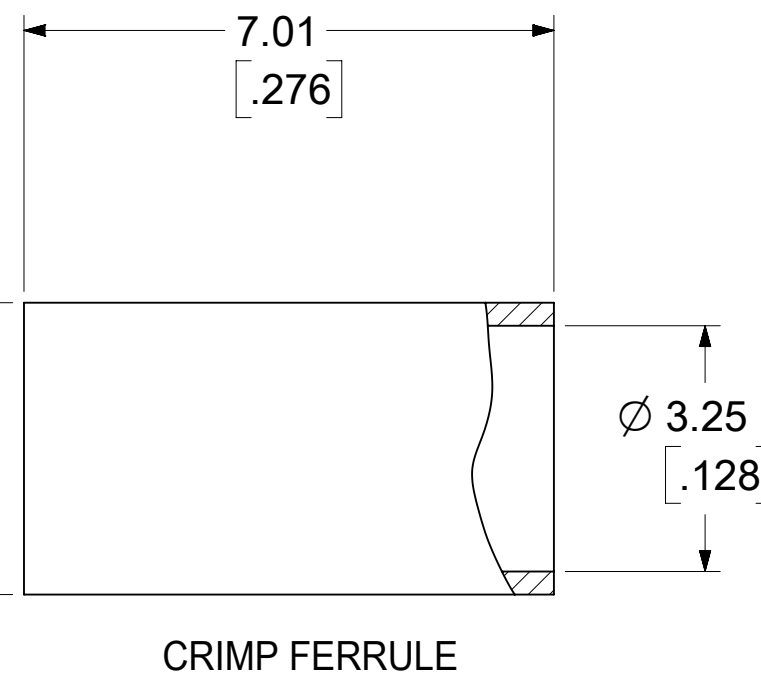
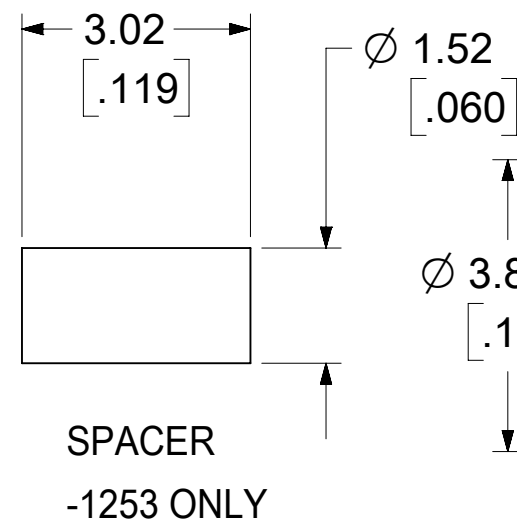
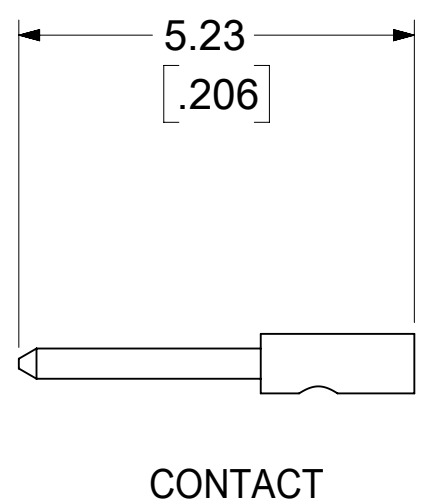
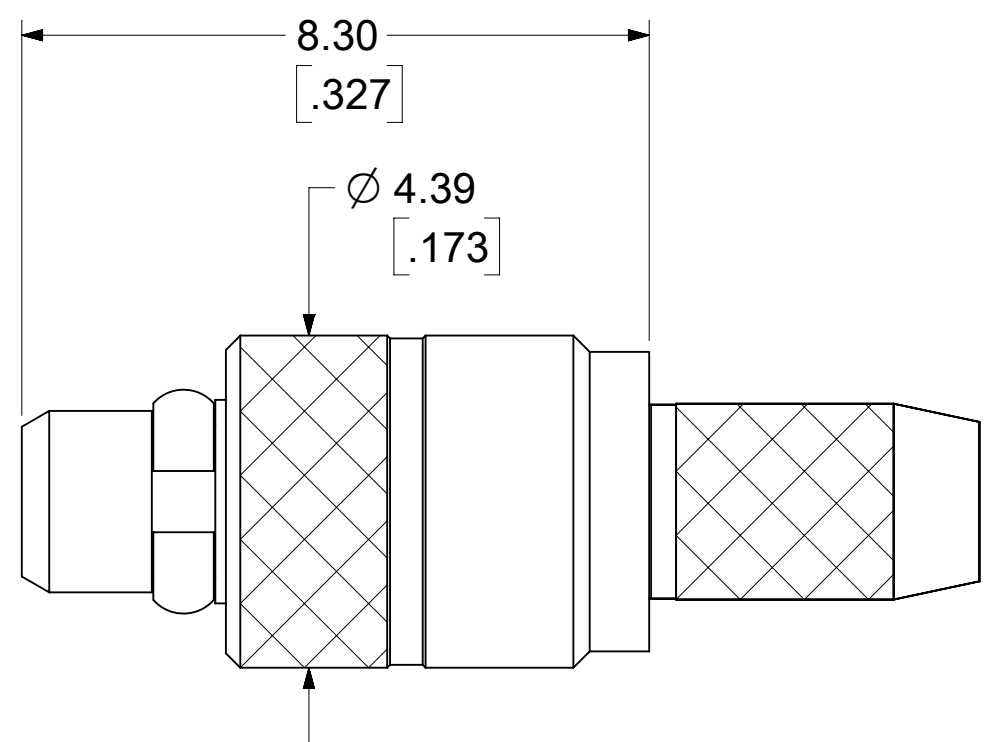


MATERIALS AND FINISHES:

BODY, CONTACT, REAR BODY,
SNAP RING, CRIMP TUBE: SEE TABLE

INSULATOR, SPACER: PTFE



| | | | | | | |
|-----------|---|---|---|--|---|---|
| 734151255 | BRASS / GOLD (1μ-in MIN) OVER NICKEL (50μ-ini MIN) | BRASS / GOLD (10μ-in MIN) OVER NICKEL (50μ-ini MIN) | BRASS / GOLD (1μ-in MIN) OVER NICKEL (50μ-ini MIN) | BeCU / GOLD (1μ-in MIN) OVER NICKEL (50μ-ini MIN) | COPPER / GOLD (1μ-in MIN) OVER NICKEL (50μ-ini MIN) | BAG |
| 734151254 | BRASS / GOLD (1μ-in MIN) OVER NICKEL (50μ-ini MIN) | BRASS / GOLD (1μ-in MIN) OVER NICKEL (50μ-ini MIN) | BRASS / GOLD (1μ-in MIN) OVER NICKEL (50μ-ini MIN) | BeCU / GOLD (1μ-in MIN) OVER NICKEL (50μ-ini MIN) | BRASS / GOLD (1μ-in MIN) OVER NICKEL (50μ-ini MIN) | BAG |
| 734151253 | BRASS / GOLD (1μ-in MIN) OVER NICKEL (50μ-ini MIN) | BRASS / GOLD (10μ-in MIN) OVER NICKEL (50μ-ini MIN) | BRASS / GOLD (1μ-in MIN) OVER NICKEL (50μ-ini MIN) | BeCU / GOLD (1μ-in MIN) OVER NICKEL (50μ-ini MIN) | BRASS / GOLD (1μ-in MIN) OVER NICKEL (50μ-ini MIN) | BAG, USING BELDEN 7805 CABLE |
| 734151252 | BRASS / GOLD (1μ-in MIN) OVER NICKEL (50μ-ini MIN) | BRASS / GOLD (10μ-in MIN) OVER NICKEL (50μ-ini MIN) | BRASS / GOLD (1μ-in MIN) OVER NICKEL (50μ-ini MIN) | BeCU / GOLD (1μ-in MIN) OVER NICKEL (50μ-ini MIN) | BRASS / GOLD (1μ-in MIN) OVER NICKEL (50μ-ini MIN) | 1 PIECE 734151251 IN SINGLE BAG WITH LABEL |
| 734151251 | BRASS / GOLD (1μ-in MIN) OVER NICKEL (50μ-ini MIN) | BRASS / GOLD (10μ-in MIN) OVER NICKEL (50μ-ini MIN) | BRASS / GOLD (1μ-in MIN) OVER NICKEL (50μ-ini MIN) | BeCU / GOLD (1μ-in MIN) OVER NICKEL (50μ-ini MIN) | BRASS / GOLD (1μ-in MIN) OVER NICKEL (50μ-ini MIN) | BAG |
| 734151250 | BRASS / GOLD (30μ-in MIN) OVER NICKEL (100μ-ini MIN) | BRASS / GOLD (50μ-in MIN) OVER NICKEL (100μ-ini MIN) | BRASS / GOLD (30μ-in MIN) OVER NICKEL (100μ-ini MIN) | BeCu / GOLD (30μ-in MIN) OVER NICKEL (100μ-ini MIN) | BRASS / GOLD (30μ-in MIN) OVER NICKEL (100μ-ini MIN) | BAG |
| PART NO. | BODY, MATERIAL / FINISH | CONTACT, MATERIAL / FINISH | REAR BODY, MATERIAL / FINISH | SNAP RING, MATERIAL / FINISH | CRIMP TUBE, MATERAIL / FINISH | PACKAGING |

| | |
|-----------------|-----------------------------|
| AS-73597-055 | CABLE ASSEMBLY INSTRUCTIONS |
| CECC-22-340 | INTERFACE |
| PS-89675-1920 | ELECTRO/MECH PERFORMANCE |
| SPECIFICATION | DESCRIPTION |
| DOCUMENT STATUS | P1 |
| RELEASE DATE | 2021/04/12 20:09:14 |

FUNCTIONAL SYMBOLS: FA=0, FC=0, FP=0

DIVISIONAL SYMBOLS: 4 PLACES ±, 3 PLACES ±, 2 PLACES ±, 1 PLACE ±, 0 PLACES ±

ANGULAR TOL ± 2.0°

THIS DRAWING CONTAINS INFORMATION THAT IS PROPRIETARY TO MOLEX ELECTRONIC TECHNOLOGIES, LLC AND SHOULD NOT BE USED WITHOUT WRITTEN PERMISSION

SCALE: IN/MM NTS

GENERAL TOLERANCES (UNLESS SPECIFIED): MM INCH

CURRENT REV DESC:

EC NO: 659752
DRWN: LMEIER
CHK'D: SSSHAH
APPR: KTAGAN

INITIAL REVISION:
DRWN: TFLAHERTY
APPR: JWIENER

DATE: 2021/03/23, 2021/04/12, 2021/04/12, 2005/12/22, 2005/12/22

THIRD ANGLE PROJECTION

DRAWING: C-SIZE

SERIES: 73415

DOCUMENT NUMBER: SD-73415-125

DOC TYPE: PSD

DOC PART: 001

REVISION: A7

MATERIAL NUMBER: SEE TABLE

CUSTOMER: SEE TABLE

SHEET NUMBER: 1 OF 1



MMCX PLUG STRAIGHT FOR RG316 CABLE
MMCX-PC, EWR-14356

PRODUCT CUSTOMER DRAWING

DOCUMENT NUMBER: SD-73415-125

MATERIAL NUMBER: SEE TABLE

SHEET NUMBER: 1 OF 1