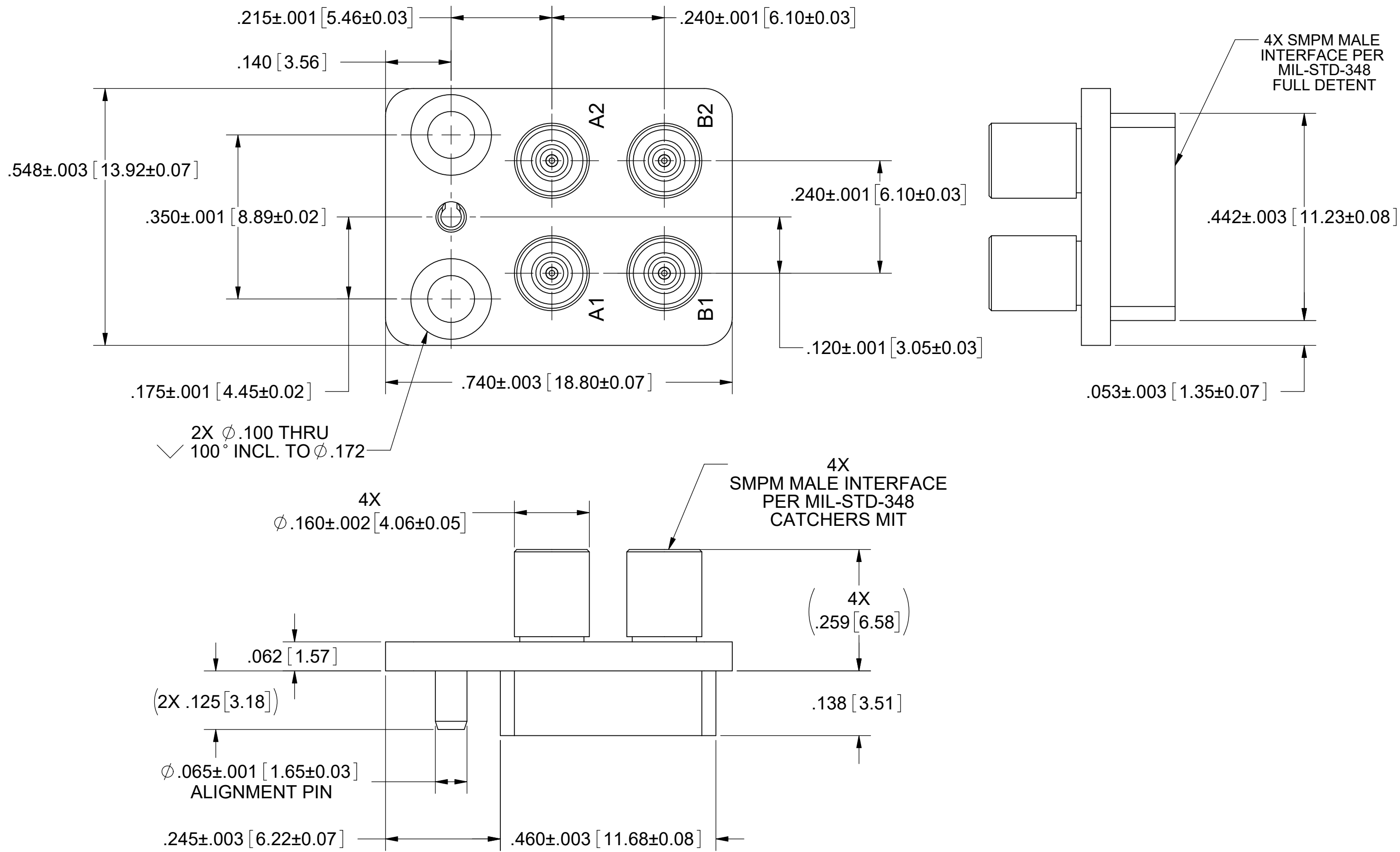


PRODUCT DATA DRAWING

REVISION HISTORY			
REV.	DESCRIPTION	DATE	APPROVED
B	DCN 42423	06/16	STW
C	DCN 48135	11/18	STW



MATERIAL:

FLANGE: STAINLESS STEEL PER AMS-5640, ALLOY UNS S30300, TYPE 1.

SPRING PINS: STAINLES STEEL PER ASTM A313, ALLOY UNS S30200, TYPE 302.

CONTACTS & SMPM BODIES: BERYLLIUM COPPER PER ASTM B196, ALLOY No. UNS C17300, TD04.

INSULATORS: PTFE PER ASTM D1710, TYPE I, GRADE 1, CLASS B.

FINISH:

FLANGE & SPRING PINS: PASSIVATED PER AMS-2700.

CONTACTS & SMPM BODIES: GOLD PER ASTM B488, TYPE II, CODE C, CLASS 1.27, OVER NICKEL PER AMS-QQ-N-290, CLASS 1, .00005" MIN.

PERFORMANCE:

IMPEDANCE: 50 OHMS

FREQ. RANGE: DC TO 18.0 GHZ

VSWR: 1.30:1 DC TO 18.0 GHZ

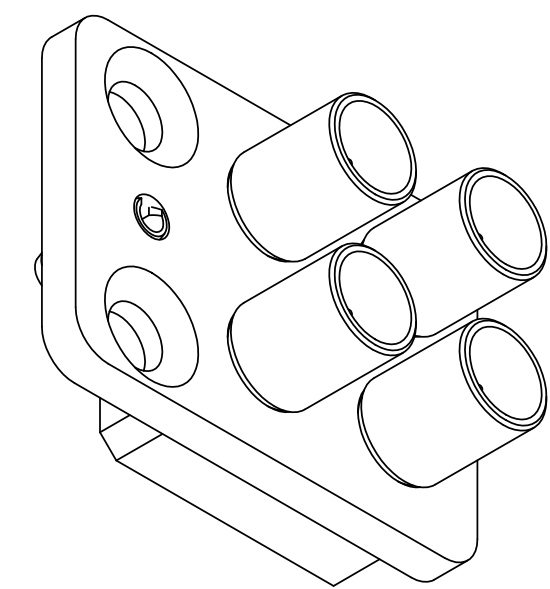
INSERTION LOSS: .03 X SQRT(F(F IN GHZ))

DWV: 1000 VRMS

OPERATING TEMP.: -55°C TO +125°C

ENGAGEMENT: 2.5 LBS MIN CATCHERS MIT
4.5 LBS MIN FULL DETENT

DISENGAGEMENT: 1.5 LBS MAX. CATCHERS MIT
6.5 LBS MAX. FULL DETENT



MATERIAL: SEE NOTES		DIMENSIONS ARE IN INCHES TOLERANCES: ANGULAR: $\pm 1^\circ$ ONE PLACE DECIMAL $\pm .030$ TWO PLACE DECIMAL $\pm .010$ THREE PLACE DECIMAL $\pm .005$	UNLESS OTHERWISE SPECIFIED: 1. ALL DIMENSIONS ARE AFTER PLATING. 2. BREAK CORNERS & EDGES R.005 MAX. 3. CHAMFER 1ST AND LAST THREAD. 4. SURFACE ROUGHNESS 63 PER MIL-STD-10. 5. DIA'S ON COMMON CENTERS TO BE CONCENTRIC WITHIN .005 T.I.R. 6. REMOVE ALL BURRS.	SV Microwave, Inc. 2400 Centrepark West Drive, Suite 100 West Palm Beach, FL 33409 TITLE: VITA 67.1 BACKPLANE 4 PORT MODULE		
FINISH: SEE NOTES						
DO NOT SCALE DRAWING		INTERPRET DIMENSIONS AND TOLERANCES PER ASME Y14.5M - 1994		SCALE: 5:1	CAGE CODE: 95077	DWG. NO. SF1132-6037
PROPRIETARY		THIRD ANGLE PROJECTION	DRAWN: JMC 01/05/11	SHEET 1 OF 1		
THE INFORMATION CONTAINED IN THIS DRAWING IS THE SOLE PROPERTY OF SV MICROWAVE, INC. ANY REPRODUCTION IN PART OR AS A WHOLE WITHOUT THE WRITTEN PERMISSION OF SV MICROWAVE, INC. IS PROHIBITED.			CHECKED: STW 01/06/11			
			APPROVED: STW 01/06/11			
			E.M. SIMULATION: N/A			