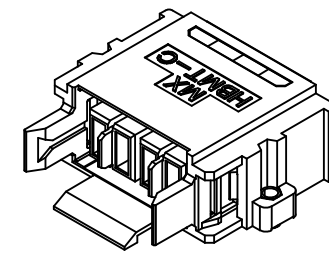
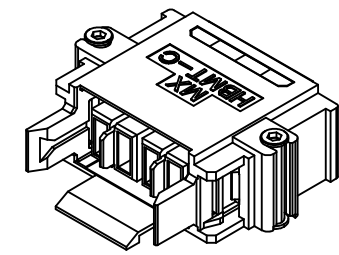


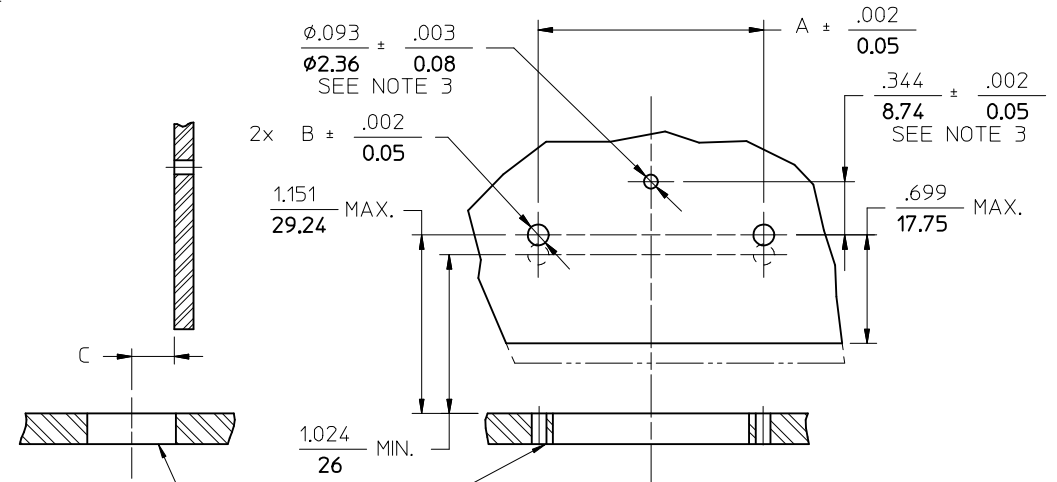
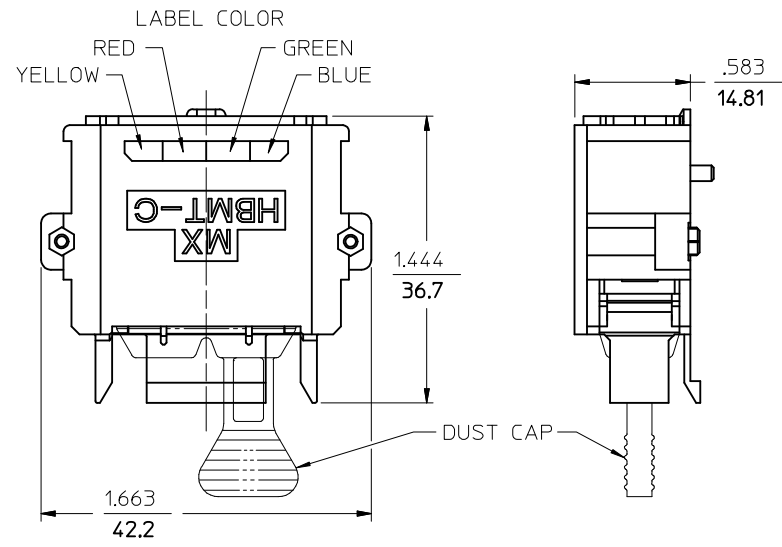
10	9	8	7	6	5	4	3	2	1
CONNECTOR P/N	FLOAT	A	B	C	MATES WITH BACKPLANE ADAPTER P/N				
106105-1100	NO	1.457 (37)	.135 (3.43)	.275 (6.98)	106105-1000, 106105-1001				
106105-2100	YES	1.497 (38)	.090 (2.29)	.295 (7.49)	106105-2000				



ISOMETRIC VIEW
P/N 106105-1100 WITHOUT FLOAT



ISOMETRIC VIEW
P/N 106105-2100 WITH FLOAT

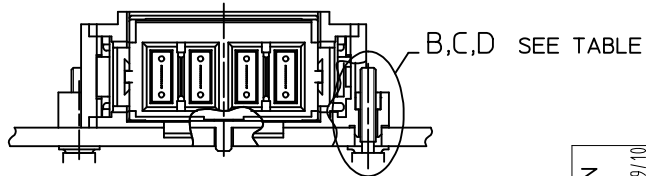
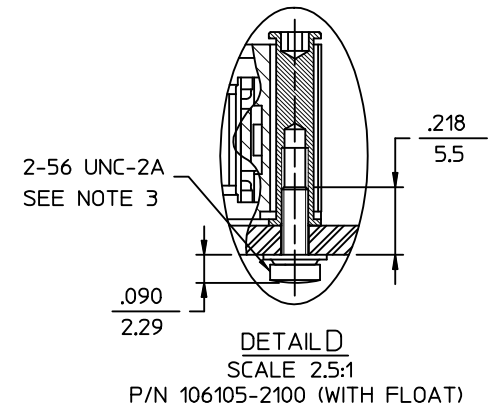
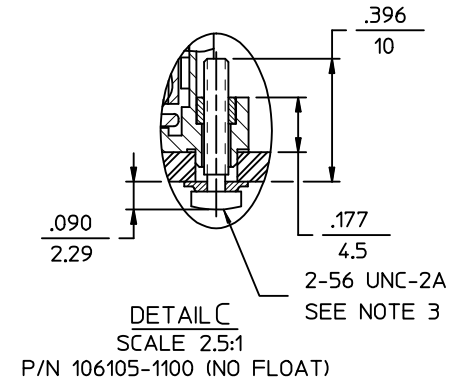
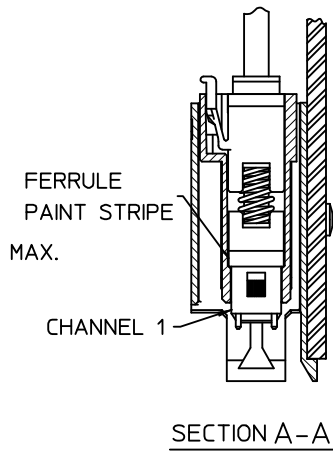
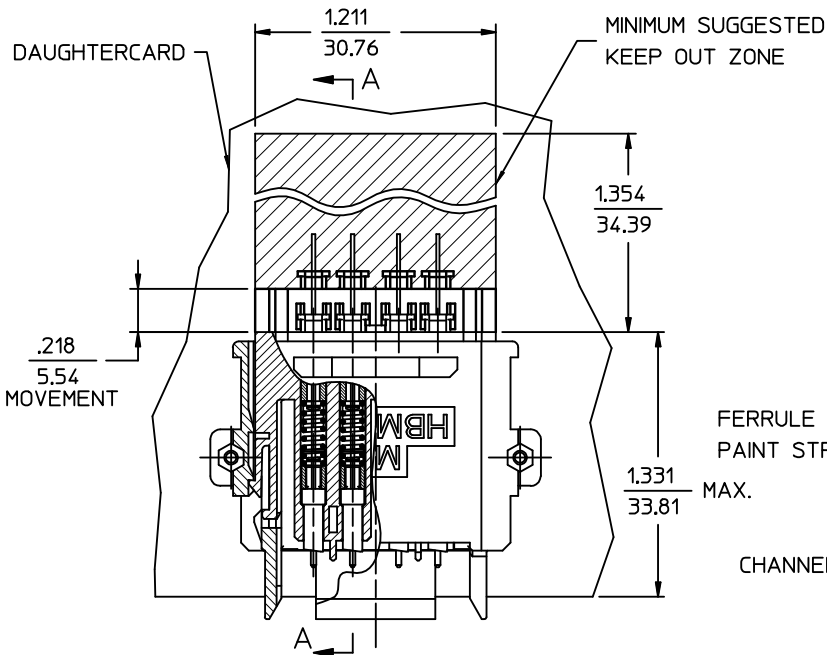


BACKPLANE RECOMMENDED MOUNTING PATTERN
SCALE 1.25:1

NOTES:

- RIVETS NOT INCLUDED WITH CONNECTOR.
- SCREWS ARE INCLUDED WITH CONNECTOR AND ARE INSTALLED BY USER. RECOMMENDED TORQUE: 2.5 TO 4 IN.LBS (0.28 TO 0.45 N.m) DEPENDING ON SUBSTRATE MATERIAL AND SCREW TYPE. USER IS ENCOURAGED TO DETERMINE THE PROPER TORQUE TO USE BY TRIAL (SEE MACHINERY'S HANDBOOK FOR PROCEDURE).
- CENTER LOCATOR HOLE AND PEG NOT USED ON P/N 106105-2100

ENTER DESCRIPTION EC NO: MF2015-0125 DRAWN: DRWINMAGHAYRE 2014/09/10 CHKD: WCHEN APPR: WCHEN 2014/12/09 A3	QUALITY SYMBOLS $\nabla = 0$ $\nabla = 0$ $\nabla = 0$	GENERAL TOLERANCES (UNLESS SPECIFIED)		DIMENSION STYLE IN/MM		SCALE	DESIGN UNITS INCH	THIRD ANGLE PROJECTION		
		mm	INCH	DRAWN BY PGI BLN	DATE 2005/10/31	HBMT DAUGHTERCARD CONNECTOR				
		4 PLACES ± --- ± ---	3 PLACES ± --- ± ---	CHECKED BY	DATE					
		2 PLACES ± --- ± ---	1 PLACE ± --- ± ---	0 PLACE ± ±	APPROVED BY WCHEN	DATE 2014/12/09	molex		DOCUMENT NO. SD-106105-1100	SHEET NO. 1 OF 2
DRAFT WHERE APPLICABLE MUST REMAIN WITHIN DIMENSIONS		ANGULAR $\pm 1/2^\circ$		MATERIAL NO. SEE TABLE		THIS DRAWING CONTAINS INFORMATION THAT IS PROPRIETARY TO MOLEX INCORPORATED AND SHOULD NOT BE USED WITHOUT WRITTEN PERMISSION				



ENTER DESCRIPTION EC NO: MF2015-0125 DRAWN: MAGHAYERE 2014/09/10 CHKD: APPR: WCHEN 2014/12/09 REV: A3	QUALITY SYMBOLS ▽=0 ▽=0	GENERAL TOLERANCES (UNLESS SPECIFIED)		DIMENSION STYLE IN/MM	SCALE 2.5:1	DESIGN UNITS INCH	THIRD ANGLE PROJECTION		
		4 PLACES ± --- ± --- 3 PLACES ± --- ± --- 2 PLACES ± --- ± --- 1 PLACE ± --- ± --- 0 PLACE ± ±	mm INCH	DRAWN BY DATE PGIBL IN 2005/10/31 CHECKED BY DATE	TITLE HBMT DAUGHTERCARD CONNECTOR				
		ANGULAR ±1/2° DRAFT WHERE APPLICABLE MUST REMAIN WITHIN DIMENSIONS		APPROVED BY DATE 2014/12/09	MATERIAL NO. SEE TABLE		DOCUMENT NO. SD-106105-1100	SHEET NO. 2 OF 2	
				SIZE B	THIS DRAWING CONTAINS INFORMATION THAT IS PROPRIETARY TO MOLEX INCORPORATED AND SHOULD NOT BE USED WITHOUT WRITTEN PERMISSION				
					molex				