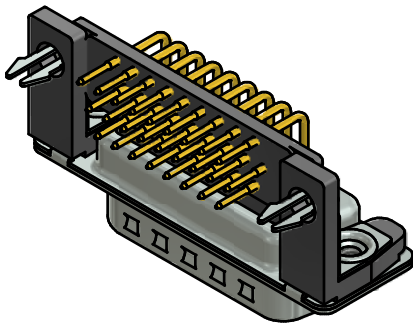
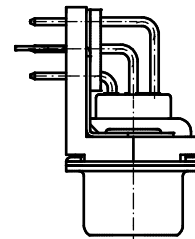
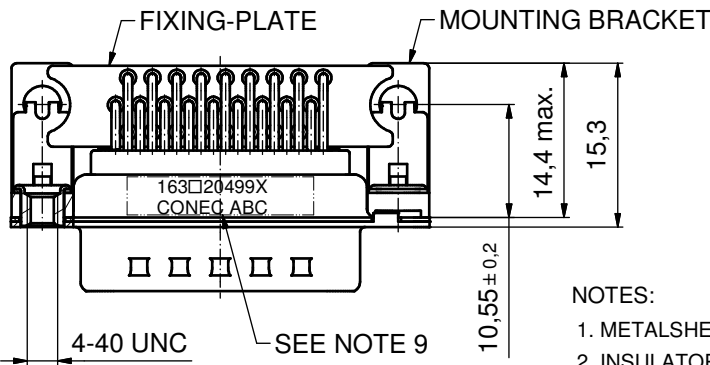
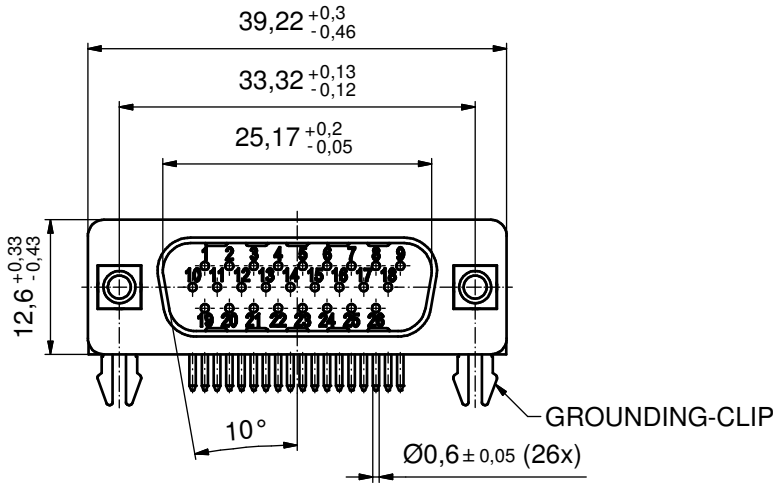
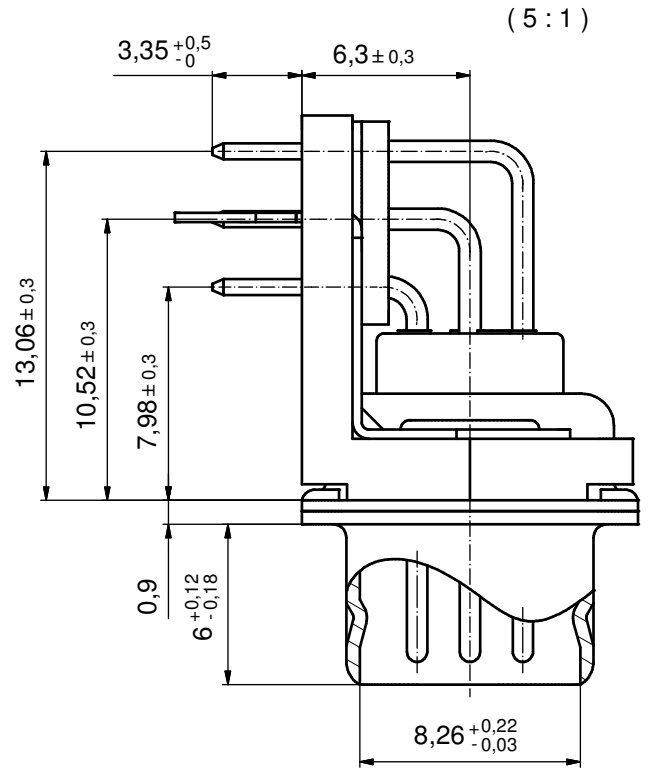


P.C.B. HOLE DRILLINGS  
(P.C.B. TOP SIDE)



NOTES:

- METALSHELLS: STEEL; min. 315µm TIN over 40-80µm NICKEL
- INSULATORS: PBT GF UL 94 V-0, BLACK
- CONTACTS: COPPER ALLOY; PLATING (SEE PART NO.):  
 PLEASE ADD C for 30µm HARD GOLD over min. 50µm NICKEL  
 PLEASE ADD B for 20µm HARD GOLD over min. 50µm NICKEL  
 PLEASE ADD A for GOLD FLASH over NICKEL (PREFERRED TYPE)
- MOUNTING-BRACKETS: PBT GF UL 94 V-0, BLACK
- THREADED INSERTS: COPPER ALLOY; min. 200µm TIN over 80µm NICKEL
- GROUNDING CLIPS: COPPER ALLOY; min. 200µm TIN over 80µm NICKEL  
PCB-HOLE:  $\varnothing 3.1 \pm 0.1$ ; PCB THICKNESS 1.6mm
- FIXING-PLATE: PBT GF UL 94 V-0, BLACK
- MAXIMUM TORQUE VALUE FOR THREAD: 6 in.LB
- CONNECTOR IS PART MARKED: 163□20499X CONEC ABC (see note 3)

Directive 2002/95/EC RoHS compliant

THIS DRAWING MAY NOT BE COPIED OR REPRODUCED IN ANY WAY, AND MAY NOT BE PASSED ON TO A THIRD PARTY WITHOUT WRITTEN PERMISSION. OWNERSHIP AND COPYRIGHT OF CONEC GmbH DO NOT ALTER CAD DRAWING BY HAND	tolerance		dim. in mm	scale: 2:1 (5:1)		
				material: SEE NOTES		
	drawn	15.08.12	Henneboel	title: <b>D-SUB HD MALE 90°</b> 26pos. 0,350inch threaded insert, mounting bracket, grounding clip dwg no: <span style="float: right;">DIN-A3</span> sh: 1		
	appd.	17.08.12	Fischer			
	norm					
d-old						
rev. a	Original				part no: 163□20499X (see note 3)	
description	date	name				