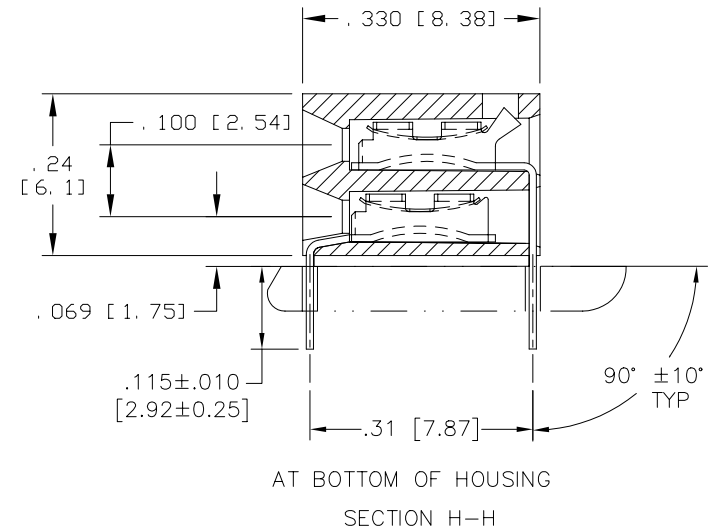
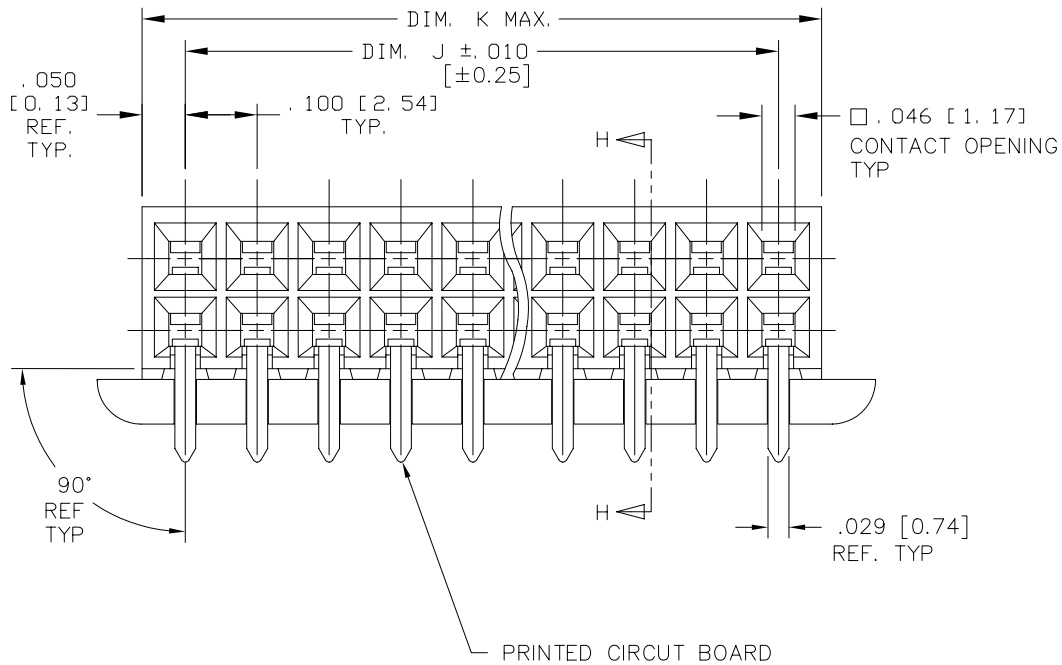
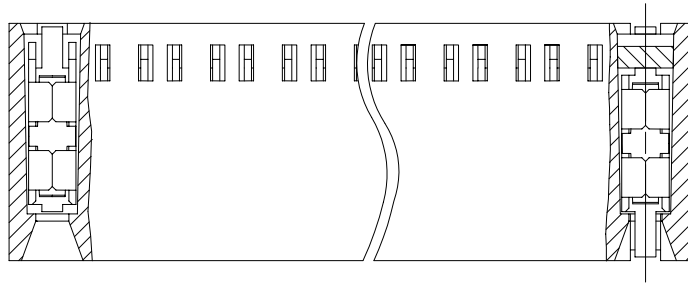


PRODUCT NO.
SEE TABLE



mat'l. code		surface		tolerance		projection		product family	
-		ISO 1302 ✓		ISO 406 ISO 1101				CARD CONN	
ltr	ecn no	dr	date	tolerances unless otherwise specified				title	
D		JGS	5/9/00	angles	linear	.xx±.01/.3		2 x.100 CARD CONNECTOR	
E	v02512	AZ	10/11/00			.xxx ±.005/.13			
F	M05-0181	MHT	8/16/05	0°±2'		.xxxx ±.0020/.051		scale 4:1	
G	M06-0117	AEA	06/26/06	dr	J. SHREINER	5/9/90		dwg no	
					enr	M. HAHN 5/9/90		sheet 1 of 4 size	
					chr	M. HAHN 5/9/90		67227 A3	
					appd	M. HAHN 5/9/90		type Product Customer Drawing	
sheet	revision	G	G	G	G				
index	sheet	1	2	3	4				

Copyright FCI
 FCIconnect.com

1

2 3

4

5

6

NOTES:

- 1. HOUSING MATERIAL:
30% GLASS-FILLED THERMOPLASTIC POLYESTER
PER UL 94-V0. COLOR BLACK.
- 2. TERMINAL MATERIAL:
BODY: 1/2 HARD BRASS. ALLOY C26000 .010 [0.25] THICK
SPRING: BE-CU. ALLOY C17200, HEAT TREATED
BODY PLATING:
30μ"/0.76μm Au OVER 50μ"/1.27μm Ni
IN CONTACT AREA.
SPRING PLATING: GOLD FLASH
- 3. APPLICATION INFORMATION:
A. RECOMMENDED MOUNTING HOLE
PATTERN IS SHOWN IN FIGURE "A"
B. ALL MATING PINS TO BE
.025 [0.64] SQUARE ON TRUE
CENTER OF GIVEN TERMINAL
SPACINGS WITHIN .015 [0.38] DIA.
C. SUGGESTED MATING PIN LENGTH
.350±.020 [8.89±0.51]
- ④. ADD "LF" SUFFIX AT THE END OF PART NUMBER FOR LEAD
FREE OPTION.
- ⑤. THESE PRODUCT MEETS EUROPEAN UNION DIRECTIVES AND OTHER
COUNTRY REGULATIONS AS DESCRIBED IN GS-22-008
- 6. THIS PART WILL WITHSTAND EXPOSURE TO 260°C PEAK TEMPERATURE
FOR 20 SECONDS IN A WAVE SOLDER, INFRA-RED OR VAPOR PHASE
SOLDER PROCESS.

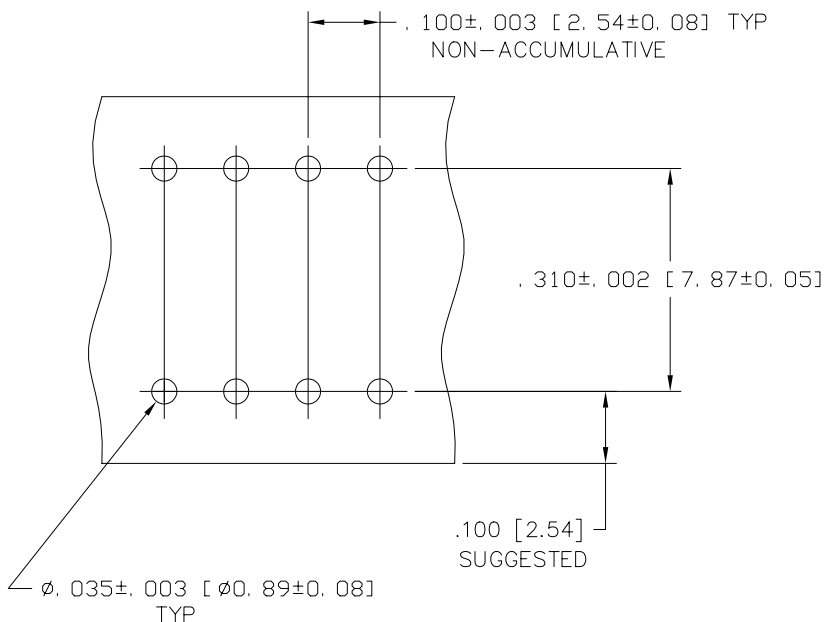


FIGURE A
SCALE 10/1



FCIconnect.com

Copyright FCI

mat'l. code		surface		tolerance		projection		product family	
-		ISO 1302 ✓		ISO 406		⊕		CARD CONN	
ltr		ecn		no		dr		date	
G									
angles		linear		.xx±.01/.3		INCH/MM		title	
0°±2'				.xxx ±.005/.13		scale 4:1		2 x.100 CARD CONNECTOR	
dr		J. SHREINER		5/9/90		FCI		dwg no	
enr		M. HAHN		5/9/90				sheet 2 of 4 size	
chr		M. HAHN		5/9/90				67227 A3	
appd		M. HAHN		5/9/90				type Product Customer Drawing	
sheet index		revision sheet							

PRODUCT NO.	NO. OF POS.	DIM. J	DIM. K	INSUL. PLUG	LEAD FREE OPTION
67227-001	2X1	.000/0.00	.100/2.54	NO	NOTE 5,6
-002	2X2	.100/2.54	.200/5.08		
-003	2X3	.200/5.08	.300/7.62		
-004	2X4	.300/7.62	.400/10.16		
-005	2X5	.400/10.16	.500/12.70		
-006	2X6	.500/12.07	.600/15.24		
-007	2X7	.600/15.24	.700/17.78		
-008	2X8	.700/17.78	.800/20.32		
-009	2X9	.800/20.32	.900/22.86		
-010	2X10	.900/22.86	1.000/25.40		
-011	2X11	1.000/25.40	1.100/27.94		
-012	2X12	1.100/27.94	1.200/30.48		
-013	2X13	1.200/30.48	1.300/33.02		
-014	2X14	1.300/33.02	1.400/35.56		
-015	2X15	1.400/35.56	1.500/38.10		
-016	2X16	1.500/38.10	1.600/40.64		
-017	2X17	1.600/40.64	1.700/43.18		
-018	2X18	1.700/43.18	1.800/45.72		
-019	2X19	1.800/45.72	1.900/48.26		
-020	2X20	1.900/48.26	2.000/50.80		
-021	2X21	2.000/50.80	2.100/53.34		
-022	2X22	2.100/53.34	2.200/55.88		
-023	2X23	2.200/55.88	2.300/58.42		
-024	2X24	2.300/58.42	2.400/60.96		
-025	2X25	2.400/60.96	2.500/63.50		
-026	2X26	2.500/63.50	2.600/66.04		
-027	2X27	2.600/66.04	2.700/68.58		
-028	2X28	2.700/68.58	2.800/71.12		
-029	2X29	2.800/71.12	2.900/73.66		
-030	2X30	2.900/73.66	3.000/76.20		
-031	2X31	3.000/76.20	3.100/78.74		
-032	2X32	3.100/78.74	3.200/81.28		
-033	2X33	3.200/81.28	3.300/83.82		
-034	2X34	3.300/83.82	3.400/86.36		
-035	2X35	3.400/86.36	3.500/88.90		
-036	2X36	3.500/88.90	3.600/91.44		
-037	2X37	3.600/91.44	3.700/93.98		
-038	2X38	3.700/93.98	3.800/96.52		
-039	2X39	3.800/96.52	3.900/99.06		
-040	2X40	3.900/99.06	4.000/101.60		
67227-041	2X41	4.000/101.60	4.000/104.14	NO	



FCIconnect.com

Copyright FCI

mat'l. code		surface		tolerance		projection		product family	
-		ISO 1302 ✓		ISO 406		⊕		CARD CONN	
				ISO 1101				title	
ltr		ecn no dr		date		tolerances unless otherwise specified		2 x.100 CARD CONNECTOR	
G						.xx±.01/.3		INCH/MM	
						.xxx ±.005/.13		scale 4:1	
						0'±2'		dwg no	
						.xxxx ±.0020/.051		sheet 3 of 4 size	
				dr J. SHREINER		5/9/90		67227	
				enr M. HAHN		5/9/90		A3	
				chr M. HAHN		5/9/90		type Product Customer Drawing	
				appd M. HAHN		5/9/90			
sheet index		revision sheet							

PRODUCT NO.	NO. OF POS.	DIM. J	DIM. K	INSUL. PLUG	LEAD FREE OPTION
67227-042	2X42	4.100/104.14	4.200/106.68	NO	NOTE 5,6
-043	2X43	4.200/106.68	4.300/109.22		
-044	2X44	4.300/109.22	4.400/111.76		
-045	2X45	4.400/111.76	4.500/114.30		
-046	2X46	4.500/114.30	4.600/116.84		
-047	2X47	4.600/116.84	4.700/119.38		
-048	2X48	4.700/119.38	4.800/121.92		
-049	2X49	4.800/121.92	4.900/124.46		
-050	2X50	4.900/124.46	5.000/127.00		
-051	2X51	5.000/127.00	5.100/129.54		
-052	2X52	5.100/129.54	5.200/132.08		
-053	2X53	5.200/132.08	5.300/134.62		
-054	2X54	5.300/134.62	5.400/137.16		
-055	2X55	5.400/137.16	5.500/139.70		
-056	2X56	5.500/139.70	5.600/142.24		
-057	2X57	5.600/142.24	5.700/144.78		
-058	2X58	5.700/144.78	5.800/147.32		
-059	2X59	5.800/147.32	5.900/149.86		
-060	2X60	5.900/149.86	6.000/152.40		
-061	2X61	6.000/152.40	6.100/154.94		
-062	2X62	6.100/154.94	6.200/157.48		
-063	2X63	6.200/157.48	6.300/160.02		
-064	2X64	6.300/160.02	6.400/162.56		
67227-065	2X65	6.400/162.56	6.500/165.10	NO	NOTE 5,6



Copyright FCJ

mat'l. code		surface		tolerance		projection		product family	
-		ISO 1302		ISO 406				CARD CONN	
				ISO 1101					
ltr		ecn no		date		tolerances unless otherwise specified		title	
G						.xx±.01/.3 .xxx ±.005/.13 .xxxx ±.0020/.051		2 x.100 CARD CONNECTOR	
				0'±2'		linear		INCH/MM	
								scale 4:1	
				dr		J. SHREINER		5/9/90	
				enr		M. HAHN		5/9/90	
				chr		M. HAHN		5/9/90	
				appd		M. HAHN		5/9/90	
sheet index		revision sheet							
								dwg no 67227 sheet 4 of 4 size A3 type Product Customer Drawing	

form: A3