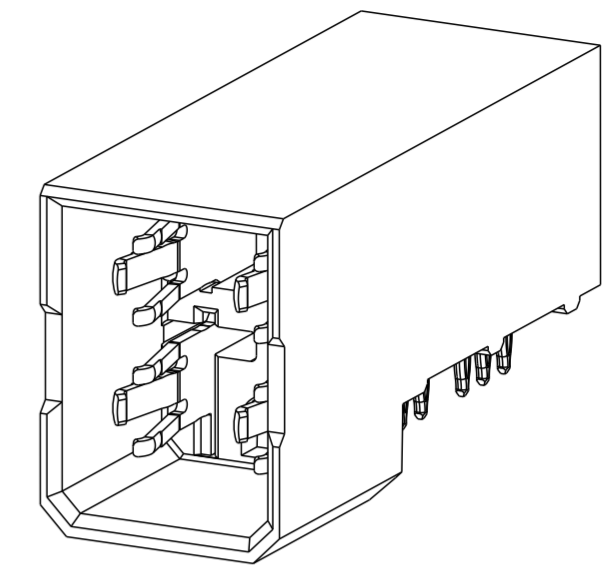
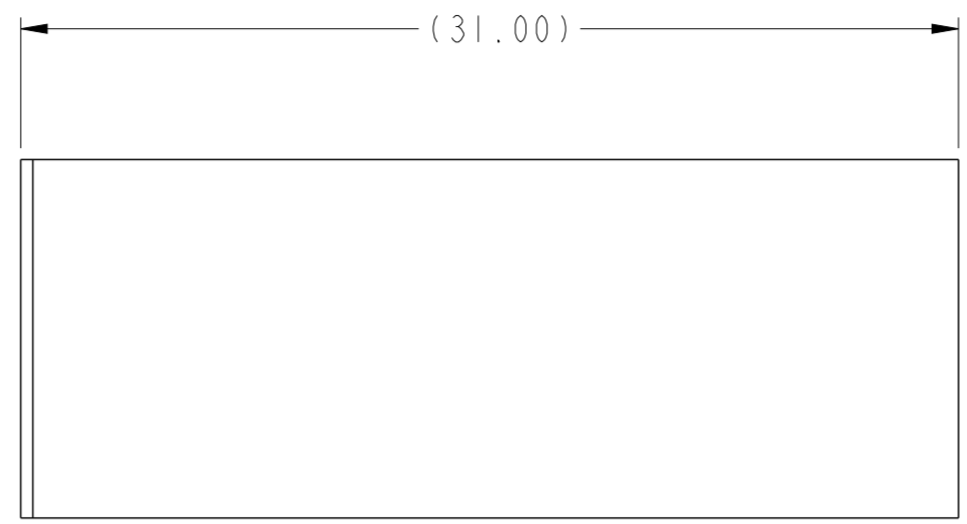
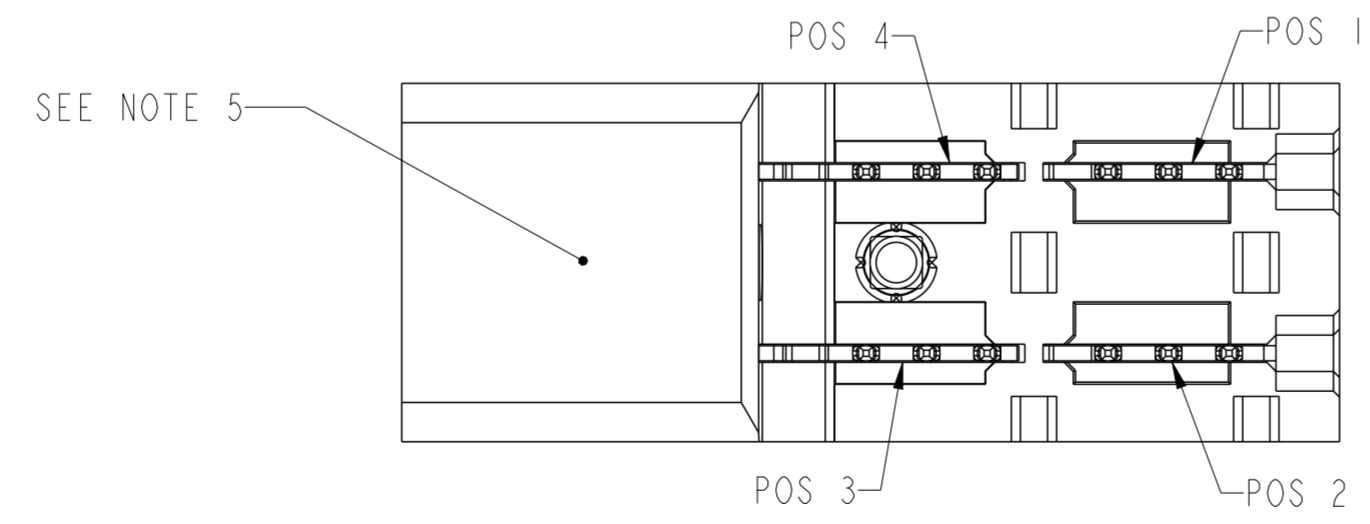
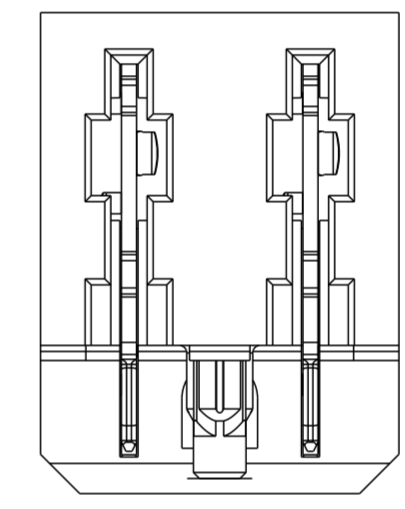
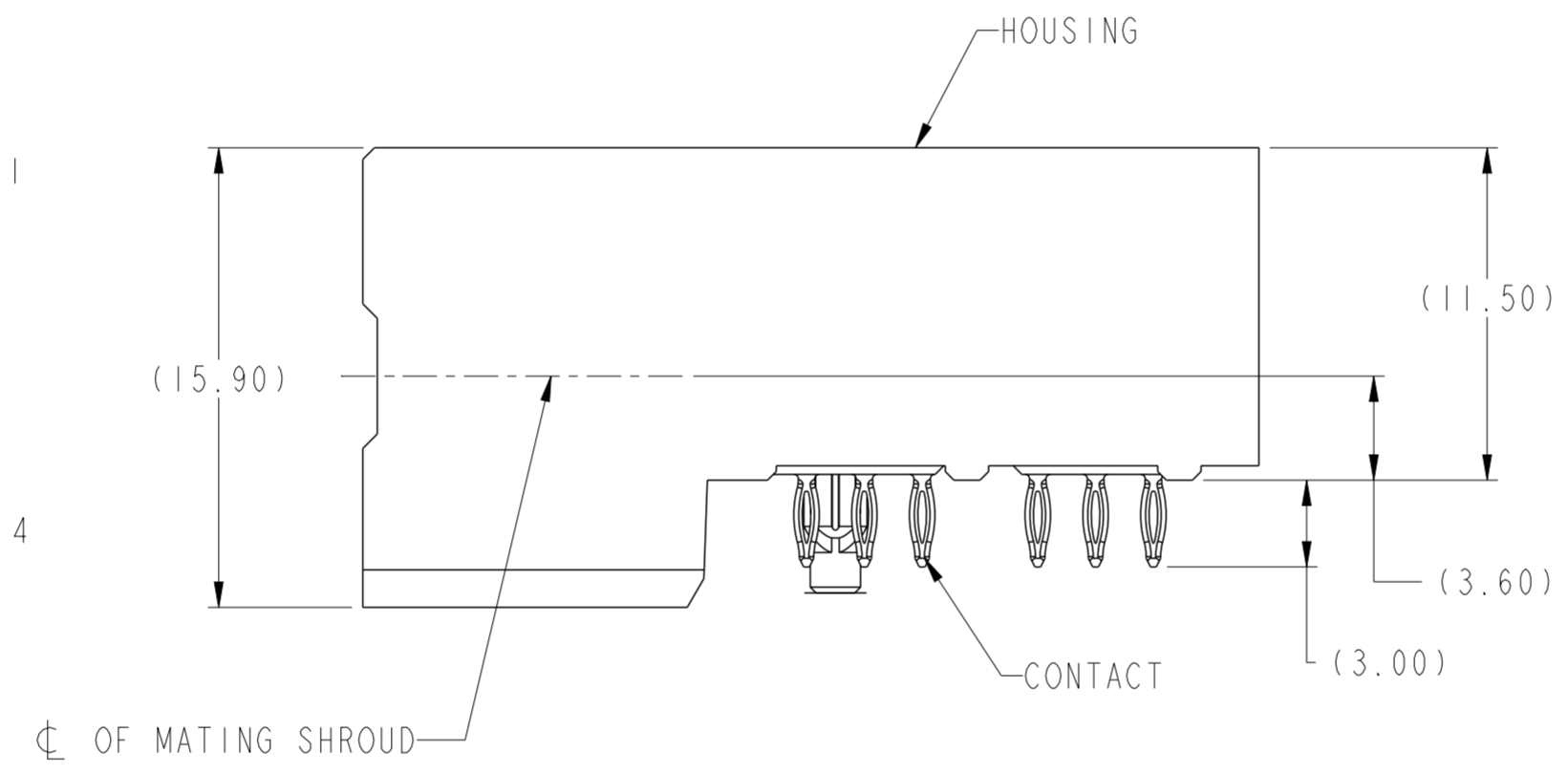
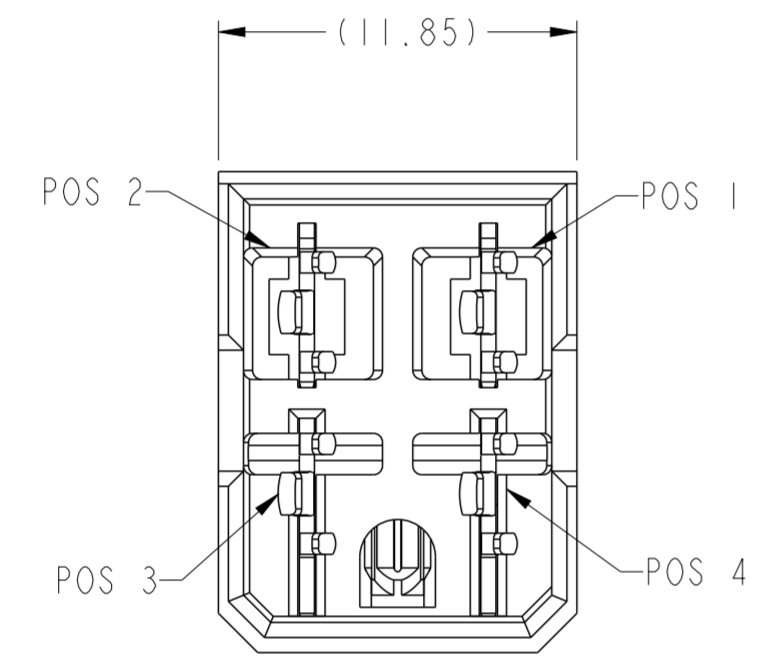


| | |
|----------------|----------------------|
| PRODUCT NUMBER | CONTACT PLATING NOTE |
| 10124648-001LF | NOTE 2 |



SCALE 3:1

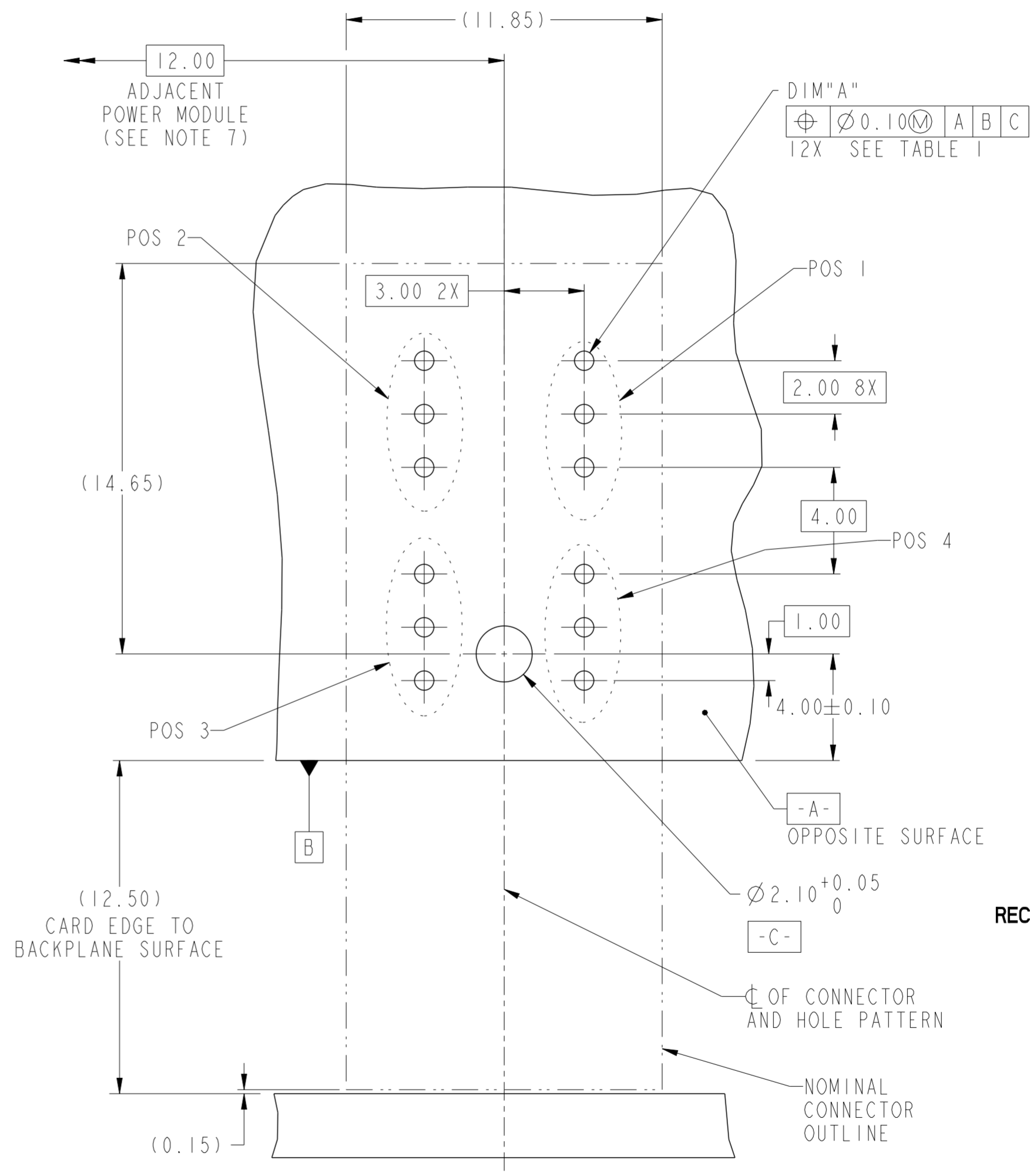


| | | | | | | | | | | |
|---------------------------------------|--|------|---------------|--|----------------|----------------|----------|----------------|------------------------|--------------|
| spec ref | GS-12-220 | dr | Paupandian, S | 2013/03/11 | projection | MM | size | A2 | scale | 4:1 |
| tolerance std | ASME Y14.5 | eng | Terry Luo | 2019/04/23 | | | ecn no | ELX-DG-33324-1 | | |
| TOLERANCES UNLESS OTHERWISE SPECIFIED | | chr | - | rel level | | | | Released | | |
| surface | ASME Y14.5 | appr | Heaven Cen | 2019/04/25 | product family | 2mm High Power | cat. no. | - | Product - Customer Drw | sheet 1 of 2 |
| linear | 0.X ±0.3 0.XX ±0.10 0.XXX ±0.050 | | | Amphenol FCI R/A HEADER ASSEMBLY, 2X2 AIRMAX POWER, 11.5MM HEIGHT (PERFORMANCE BASED PLATING) | | div no | 10124648 | | rev | D |
| angular | 0° ±2° | | | | | | | | | |

Amphenol FCI

© 2016 AFCI

| TOP LAYER DESCRIPTION | TABLE I PLATED THROUGH-HOLE REQUIREMENTS | | | | | | | |
|-----------------------|---|------------------|--------------------|------------------|--------------------|---------------|------------------|---------------------------------|
| | DRILLED HOLE DIAMETER | COPPER THICKNESS | TIN-LEAD THICKNESS | NICKEL THICKNESS | GOLD THICKNESS | TIN THICKNESS | SILVER THICKNESS | FINISHED HOLE DIAMETER (DIM"A") |
| TIN-LEAD | 0.81-0.86 (0.85 DRILL) | 0.025 - 0.050 | 0.005 - 0.015 | -- | -- | -- | -- | 0.65 - 0.80 |
| IMMERSION TIN | 0.81-0.86 (0.85 DRILL) | 0.025 - 0.050 | -- | -- | -- | 0.9 - 1.5um | -- | 0.70 - 0.80 |
| IMMERSION SILVER | 0.81-0.86 (0.85 DRILL) | 0.025 - 0.050 | -- | -- | -- | -- | 0.15 - 0.65um | 0.70 - 0.80 |
| COPPER (SEE NOTE 11) | 0.81-0.86 (0.85 DRILL) | 0.025 - 0.050 | -- | -- | -- | -- | -- | 0.70 - 0.80 |
| GOLD | 0.81-0.86 (0.85 DRILL) | 0.025 - 0.050 | -- | 0.003 - 0.007 | FLASH UP TO 0.0002 | -- | -- | 0.69 - 0.80 |



- NOTES:
- CONNECTOR MATERIALS:
HOUSING: HIGH TEMPERATURE THERMOPLASTIC, BLACK
UL 94V-0 COMPLIANT
CONTACT: HIGH PERFORMANCE COPPER ALLOY
 - CONTACT PLATING:
PRESS-FIT TAIL: 0.5um MIN MATT TIN OVER NICKEL.
SEPARABLE INTERFACE: 0.76 um MIN GXT OVER NICKEL
 - PRODUCT SPECIFICATION: GS-12-220
 - APPLICATION SPECIFICATION: GS-20-023
 - PRODUCT MARKING (PRODUCT NUMBER & LOT CODE) ON HOUSING.
 - MINIMUM NOMINAL PCB THICKNESS: 1.6mm
 - REFER TO CUSTOMER DRAWING 10035911 REGARDING INFORMATION REGARDING PCB LAYOUT OF POWER AND GUIDE MODULES RELATIVE TO SIGNAL MODULES.
 - PRODUCT MEETS EUROPEAN UNION DIRECTIVES AND OTHER COUNTRY REGULATIONS AS DESCRIBED IN FCI SPECIFICATION GS-22-008.
 - PACKAGING MEETS FCI SPECIFICATION GS-14-920.
 - HOUSING COMPONENT WILL WITHSTAND EXPOSURE TO 260°C PEAK TEMPERATURE FOR 60 SECONDS IN A CONVECTION, INFRA-RED, OR VAPOR PHASE REFLOW OVEN.
 - COPPER PLATING THICKNESS IN CENTER OF VIA-HOLE CAN BE NO MORE THAN 0.003 LESS THAN OTHER AREAS.

RECOMMENDED PCB LAYOUT,
COMPONENT SIDE
SCALE 6:1

| | | | | | | | | | | | |
|---------------|------------|-------|---------------|--------------|----------------|----|----------|--------------------------|-----------|----------|---|
| spec ref | GS-12-220 | dr | Paupandian, S | 2013/03/11 | projection | MM | size | A2 | scale | 1:1 | |
| tolerance std | ASME Y14.5 | eng | Terry Luo | 2019/04/23 | chr | - | ecn no | ELX-DG-33324-1 | rel level | Released | |
| surface | linear | 0.X | ±0.3 | Amphenol FCI | product family | - | cat. no. | R/A HEADER ASSEMBLY, 2X2 | 10124648 | rev | D |
| | | 0.XX | ±0.10 | | | | | | | | |
| | | 0.XXX | ±0.050 | | | | | | | | |
| | angular | 0° | ±2° | | | | | | | | |

Amphenol FCI

© 2016 APCI