

| ATLANTIC VERSION TERMINATOR INTERFACE ADAPTER | PART NUMBER | REVISION          | DESCRIPTION              | FEED TYPE                      | APPLICATOR STYLE CONVERSION CHART |                       |           |             |           |           |                        |
|---|-------------|-------------------|--------------------------|--------------------------------|-----------------------------------|-----------------------|-----------|-------------|-----------|-----------|------------------------|
|   |             |                   |                          |                                | CONVERT TO                        | PART NUMBERS REQUIRED |           |             |           |           |                        |
|   | 2266781-1   | A                 | FINE CRIMP HEIGHT ADJUST | MECHANICAL                     | PNEUMATIC FEED                    | 2119950-1             | 1338685-1 | 5-18022-5   | 2119641-1 | 2119799-1 | 2063440-1              |
|   |             |                   |                          |                                | SERVO LATCH PLATE                 | 2119951-1             | -         | 8-2266781-5 | 1901094-3 | -         | 2168400-6 (QUANTITY 2) |
|   |             |                   |                          |                                | SMART APPLICATOR                  | 2161326-1             | -         | 8-2266781-4 | -         | -         | -                      |
|   | 2266781-2   | A                 | FINE CRIMP HEIGHT ADJUST | PNEUMATIC                      | MECHANICAL FEED                   | 2119949-1             | 1338685-1 | 5-18022-5   | 2119653-1 | -         | -                      |
|   |             |                   |                          |                                | SERVO LATCH PLATE                 | 2119951-1             | -         | 8-2266781-5 | 1901094-3 | -         | 2168400-6 (QUANTITY 2) |
|   |             |                   |                          |                                | SMART APPLICATOR                  | 2161326-1             | -         | 8-2266781-4 | -         | -         | -                      |
|   | 2266781-5   | A                 | FINE CRIMP HEIGHT ADJUST | SERVO LATCH PLATE <sup>4</sup> | MECHANICAL FEED                   | 2119949-1             | 1338685-1 | 5-18022-5   | 2119653-1 | -         | -                      |
|   |             |                   |                          |                                | PNEUMATIC FEED                    | 2119950-1             | 1338685-1 | 5-18022-5   | 2119641-1 | 2119799-1 | 2063440-1              |
|   | 2266781-6   | A                 | NON-CRIMP HEIGHT ADJUST  | SERVO LATCH PLATE <sup>4</sup> | -                                 | -                     | -         | -           | -         | -         | -                      |
|   |             |                   |                          |                                | -                                 | -                     | -         | -           | -         | -         | -                      |
|   | 2266781-7   | A                 | FINE CRIMP HEIGHT ADJUST | NONE                           | -                                 | -                     | -         | -           | -         | -         | -                      |
|   |             |                   |                          |                                | -                                 | -                     | -         | -           | -         | -         | -                      |
| 7-2266781-7                                   | A           | CRIMP TOOLING KIT | -                        | -                              | -                                 | -                     | -         | -           | -         | -         |                        |

| APPLICATOR DATA |                |      |
|-----------------|----------------|------|
| CRIMP           | SIZE           | TYPE |
| WIRE            | 1.88 mm [.074] | F    |
| INSUL           | 2.54 mm [.100] | F    |

APPLICATOR INSTRUCTIONS  
408-10389

| TERMINAL DATA: DELPHI TERMINAL DELPHI PACKARD CRIMP SPECIFICATION       |   |
|---|---|
| TERMINAL NAME: FEMALE DSQ 2.8 TIN PLATED TERMINAL                       |   |
| WIRE STRIP LENGTH<br>3.52-3.90 mm [.139-.154 IN]                        | INSULATION DIAMETER RANGE<br>Ø1.45-2.40 mm [.057-.094 IN] |
| TERMINAL 15409039 PAGE 1 OF 12 Rev 3-4-2014 - APPLICATION SPECIFICATION |   |
| TERMINALS APPLIED   |   |
| TE TERMINAL<br>2113139-1  | DELPHI TERMINAL<br>15409039                               |

| WIRE SIZE | CRIMP HEIGHT mm [INCH]     | CRIMP HEIGHT REFERENCE SETTING |
|-----------|----------------------------|--------------------------------|
| 1.00mm2   | 1.45+/-0.05 [.057+/-0.002] | 4.0                            |
| 0.80mm2   | 1.35+/-0.05 [.053+/-0.002] | 5.0                            |
| 0.50mm2   | 1.25+/-0.05 [.049+/-0.002] | 6.1                            |
| 0.35mm2   | 1.15+/-0.05 [.045+/-0.002] | 7.3                            |

- RECOMMENDED SPARE PARTS
- GREASE BEARING SURFACES LIGHTLY
- 3. LUBRICATE DAILY PER THE APPLICATOR INSTRUCTION SHEET SUPPLIED WITH THE APPLICATOR.
- APPLICATOR SPECIFIC DATA TO BE ENTERED INTO BLANK MEMORY CHIP AT ASSEMBLY. SEE BELOW FOR PART NUMBER:  
MECHANICAL FEED WITH "SMART APPLICATOR" CONVERSION: 8-2266781-4  
PNEUMATIC FEED WITH "SMART APPLICATOR" CONVERSION: 8-2266781-4  
SERVO FEED WITH "FINE CRIMP HEIGHT ADJUST": 8-2266781-5  
SERVO FEED WITH "NON-CRIMP HEIGHT ADJUST": 8-2266781-6
- 5. ADJUSTMENT OF THE STRIPPER MAY BE REQUIRED WHEN MOVING THE APPLICATOR BETWEEN BENCH AND LEADMAKER APPLICATIONS.
- APPLY PART NUMBER 1-23419-5 LOCTITE TO THREADS OF ITEM 62. APPLY PART NUMBER 2-23419-6 LOCTITE TO THREADS OF ITEM 242. FOR -6 ONLY APPLY PART NUMBER 1-23419-5 LOCTITE TO THREADS OF ITEM 37.
- GREASE THREADS, GROOVE AND O-RING ON ITEMS 35 & 252.
- MAGNET, ITEM 166 MUST BE ORIENTED CORRECTLY IN ORDER TO PROPERLY ACTUATE THE COUNTER.
- CRIMP HEIGHT REFERENCE SETTING WAS THE SETTING USED WHEN THE APPLICATOR WAS QUALIFIED AT THE FACTORY. ADJUSTMENT MAY BE NECESSARY WHEN RUNNING APPLICATOR IN THE FIELD.
- SPARE FEED CAM STORAGE LOCATION REFER TO INSTRUCTION SHEET FOR ADDITIONAL INFORMATION.
- TO CONVERT THE APPLICATOR TO A NON-CARRIER CUTTING STYLE, REMOVE ITEM 13 AND ATTACH TO THE LOCATION ON THE BACK SIDE OF THE HOUSING. REFER TO INSTRUCTION SHEET FOR ADDITIONAL INFORMATION.
- WHEN ASSEMBLING A NON CRIMP HEIGHT ADJUST APPLICATOR (-6) USE SHIMS FROM ITEM 260 TO ACHIEVE A NOMINAL SHIM HEIGHT OF 4.35.

**\*WARNING**  
ON INSTALLATION, SET WIRE DISC, ITEM 40 TO LARGEST WIRE SIZE SETTING. USE OF SETTINGS BELOW MINIMUM REQUIRED CRIMP HEIGHT SETTING WILL CAUSE DAMAGE TO CRIMP TOOLING.

| -77 | -7 | -6 | -5 | -2 | -1 | PART NO   | DESCRIPTION          | ITEM NO |
|-----|----|----|----|----|----|-----------|----------------------|---------|
| -   | -  | 1  | -  | -  | -  | 2119957-2 | APPLICATOR SHIM PACK | 260     |

**ATLANTIC VERSION**  
Shown on sheets 1 of 4 & 2 of 4  
(Pacific version shown on sheets 3 of 4 & 4 of 4)

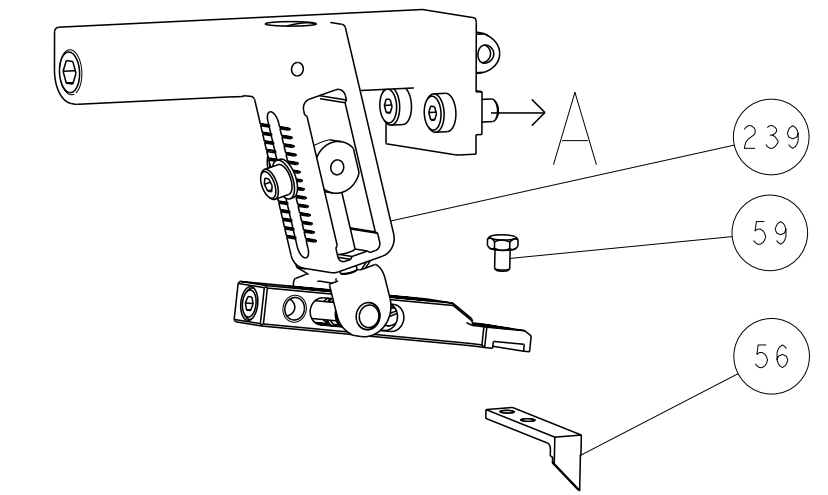
| SET UP GAUGE | LOC | DIST | REVISIONS |           |    |      |
|--------------|-----|------|-----------|-----------|----|------|
| 2119599-1    | A   | 66   | #         | DATE      | BY | APPV |
|              |     |      | 1         | 07MAY2015 | GH | TE   |
|              |     |      | 2         | 02JUN2015 | GH | GB   |
|              |     |      | A         | 18JUN2015 | GH | TE   |

| # | QTY | DESCRIPTION                                   | DATE | OWN | APPV |
|---|-----|---|------|-----|------|
| - | 1   | 8-21084-0 O-RING, .676 ID, .070 DIA. MAT.     |      |     | 252  |
| - | -   | 2119640-1 PUSH ROD, AIR FEED                  |      |     | 250  |
| - | -   | 2079988-1 BUSHING, LCH5-12, MISUMI            |      |     | 249  |
| - | -   | 2119641-1 FEED CAM, AIR FEED                  |      |     | 248  |
| - | 1   | 2119798-1 DETENT PIN                          |      |     | 247  |
| - | 1   | 1-22279-3 SPRING, COMPRESSION                 |      |     | 246  |
| - | -   | 2119758-1 RAM, AMP STYLE, SIDE FEED, NON-ADJ. |      |     | 245  |
| - | 1   | 2119082-4 CAM, SNAIL, INSULATION ADJUSTMENT   |      |     | 244  |
| - | 1   | 2079764-1 WASHER, WAVE SPRING, CREST-TO-CREST |      |     | 243  |
| - | 1   | 2119083-1 RETAINER, INSULATION DIAL           |      |     | 242  |
| - | 1   | 7-18023-7 SCR, SKT HD CAP M3 X 4.0            |      |     | 241  |
| - | -   | 2168400-6 SHCS, LOW HEAD, RoHS, M5 X 16       |      |     | 240  |
| - | -   | 2119580-1 MECHANICAL FEED ASSEMBLY            |      |     | 239  |
| - | -   | 2063440-1 AIR FEED MODULE                     |      |     | 238  |
| - | -   | 2119740-2 TAG, IDENTIFICATION                 |      |     | 213  |
| - | -   | 1901094-3 SPACER, FEEDER                      |      |     | 198  |
| - | -   | 21045-3 RING, RETAIN, EXTERN, 3/16 CRESCENT   |      |     | 172  |
| - | 1   | 994969-1 MAGNET, RARE EARTH HIGH ENERGY       |      |     | 166  |
| - | REF | 994970-2 COUNTER, MAGNETIC                    |      |     | 164  |
| - | -   | 240638-1 SPRING, FEED FINGER                  |      |     | 163  |
| - | -   | 3-23627-7 PIN, RETAIN, GRVD, 3/16 X .854      |      |     | 137  |
| - | -   | 2119799-1 HOLDER, FEED FINGER, AF             |      |     | 136  |
| - | -   | SEE NOTE 4 MEMORY CHIP, PROGRAMMED            |      |     | 135  |
| - | -   | 1633743-1 SERVO FEED LATCH ASM                |      |     | 133  |
| - | -   | 2119944-1 FEED FINGER ASSEMBLY, SF            |      |     | 117  |
| - | 1   | 455888-4 SPACER, CRIMPER                      |      |     | 82   |
| - | 1   | 2119956-1 DOCUMENTATION PACKAGE               |      |     | 71   |
| - | 1   | 2119740-1 TAG, IDENTIFICATION                 |      |     | 67   |
| - | 2   | 2168078-1 SCREW, DRIVE, RH, RoHS, 2 x .188    |      |     | 66   |
| - | 1   | 2119793-1 LIMITER, ADJUSTMENT BOLT            |      |     | 63   |
| - | 3   | 992763-5 SCR, SET, SOC, CONE POINT, M3 X 4.0  |      |     | 62   |
| - | 1   | 2079383-4 SCR, BHSC, RoHS (M4 X 8)            |      |     | 60   |
| - | -   | 5-18022-5 SCR, HEX HD CAP, M4 X 6.0           |      |     | 59   |
| - | -   | 1338685-1 PAWL, FEED                          |      |     | 56   |
| - | 4   | 2168400-1 SHCS, LOW HEAD, RoHS, M4 X 12       |      |     | 54   |
| - | 2   | 1-2168083-0 SCR, SKT HD CAP, RoHS, M4 X 10    |      |     | 53   |
| - | 1   | 5018030-1 NUT, HEX, REG, RoHS, M3             |      |     | 52   |
| - | 1   | 811242-5 BUMPER, HOLD DOWN                    |      |     | 51   |
| - | 1   | 690753-2 SPACER, TONKER                       |      |     | 50   |
| - | -   | 18023-9 SCR, SKT HD CAP M4 X 6.0              |      |     | 49   |
| - | -   | 2119652-1 FEED CAM, PRE FEED                  |      |     | 48   |
| - | -   | 2119653-1 FEED CAM, POST FEED                 |      |     | 47   |
| - | 1   | 2119656-9 APPLICATOR BASIC ASSEMBLY, SF       |      |     | 46   |
| - | 1   | 2119370-1 RAM, AMP STYLE, SIDE FEED           |      |     | 44   |
| - | 1   | 2079383-7 SCR, BHSC, RoHS (M8 X 25)           |      |     | 41   |
| - | 1   | 2119645-1 DISC, NUMBERED FA WIRE ADJUSTMENT   |      |     | 40   |
| - | 1   | 2119957-1 APPLICATOR SHIM PACK                |      |     | 39   |
| - | 1   | 2119644-1 RAM WASHER, PRECISION               |      |     | 38   |
| - | 1   | 2119085-1 FA HEAD, ATLANTIC STYLE             |      |     | 37   |
| - | 1   | 2119092-1 BOLT, ADJUSTMENT                    |      |     | 35   |
| - | 1   | 1752356-4 SUPPORT, TERMINAL                   |      |     | 34   |
| - | 2   | 2079383-5 SCR, BHSC, RoHS (M4 X 20)           |      |     | 33   |
| - | 1   | 2161328-1 HEX HEAD, FLANGED, M5 X 8mm LONG    |      |     | 32   |
| - | 1   | 1-1320908-2 SPACER, STRIP GUIDE               |      |     | 30   |
| - | 1   | 2119959-1 ASSEMBLY, STRIP GUIDE               |      |     | 29   |
| - | 1   | 455888-3 SPACER, CRIMPER                      |      |     | 28   |
| - | 1   | 1320928-2 STRIP GUIDE                         |      |     | 24   |
| - | 1   | 2168083-2 SCR, SKT HD CAP, RoHS, M4 X 8.0     |      |     | 21   |
| - | 2   | 1-18028-2 WASHER, FLAT, REG M4                |      |     | 20   |
| - | 1   | 2119533-1 STRIPPER, SIDE FEED                 |      |     | 19   |
| - | 1   | 2119806-1 INSERT, SHEAR                       |      |     | 13   |
| - | 1   | 3-22280-3 SPRING, COMPRESSION                 |      |     | 12   |
| - | 1   | 1-356885-4 STOP, SHEAR                        |      |     | 11   |
| - | 1   | 2119805-1 SHEAR HOLDER, FRONT                 |      |     | 10   |
| - | 1   | 1803095-1 FLOATING SHEAR, FRONT               |      |     | 9    |
| - | 1   | 8-1803054-4 ANVIL, COMBINATION                |      |     | 8    |
| - | -   | -   |      |     | 7    |
| - | -   | -   |      |     | 6    |
| - | 1   | 2119757-8 DEPRESSOR, SHEAR                    |      |     | 5    |
| - | 1   | 2-238011-2 BLOCK, CRIMPER SPACER              |      |     | 4    |
| - | 1   | 1-2119582-0 CRIMPER, INSULATION F PREMIUM     |      |     | 3    |
| - | 1   | 455888-3 SPACER, CRIMPER                      |      |     | 2    |
| - | 1   | 9-1633738-0 CRIMPER, WIRE                     |      |     | 1    |

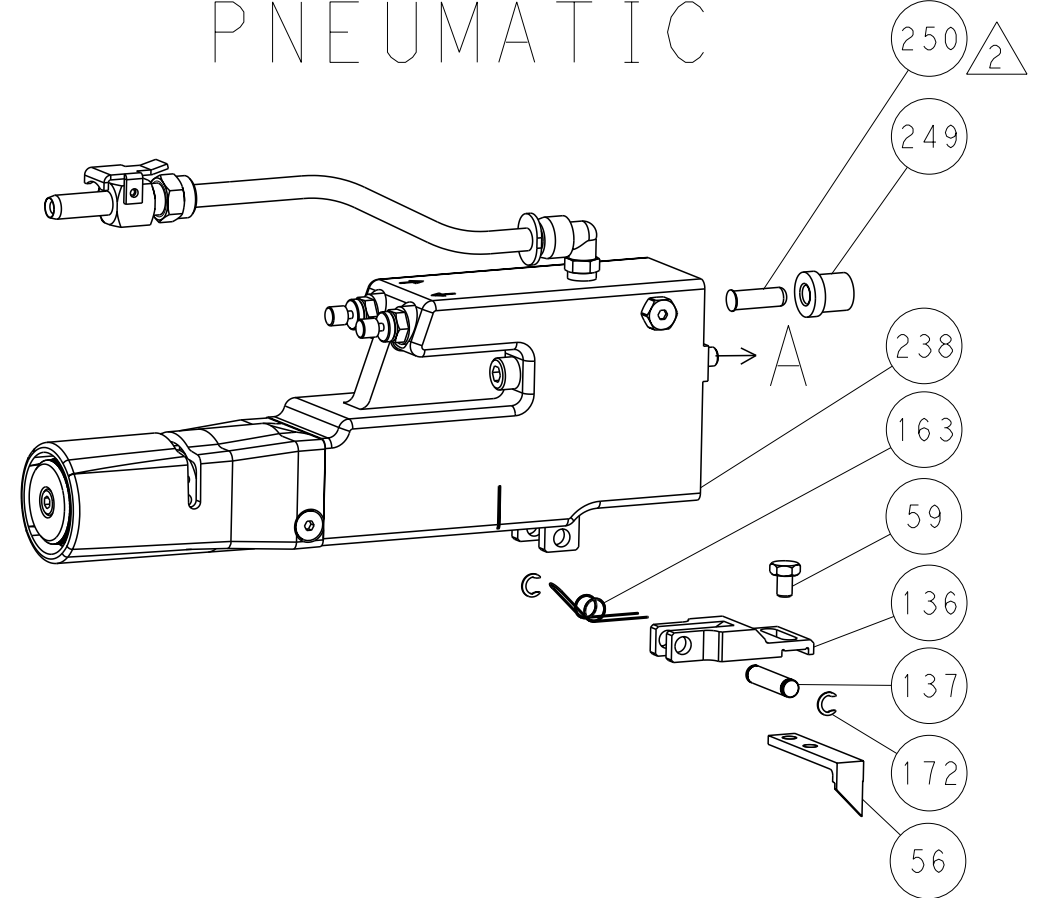
| DIMENSIONS:                            |              | TOLERANCES UNLESS OTHERWISE SPECIFIED: |            | OWN          | DATE     | TE Connectivity            |           |
|--|--------------|--|------------|--------------|----------|----------------------------|-----------|
| mm                                     | 0 PLC ±.5    | 1 PLC ±.3                              | 2 PLC ±.13 | HOFFNER      | 7MAY2015 | Harrisburg, PA 17105-3608  |           |
|  | 3 PLC ±0.013 | 4 PLC ±0.001                           | ANGLES ±.1 | T. ELBIN     | 8MAY2015 | Ocean Side Feed Applicator |           |
| MATERIAL:                              | FINISH:      | WEIGHT:                                | SCALE:     | APV          | REV      | SIZE                       | CAGE CODE |
|  |              |  | 1:2        |              |          | A1                         | 00779     |
| Customer Accessible Production Drawing |              |  |            | SHEET 1 OF 4 |          | REV A                      |           |

| LOC | DIST | REVISIONS   |      |     |      |
|-----|------|-------------|------|-----|------|
| A   | 66   | REV         | DATE | OWN | APVD |
| -   | -    | SEE SHEET 1 | -    | -   | -    |

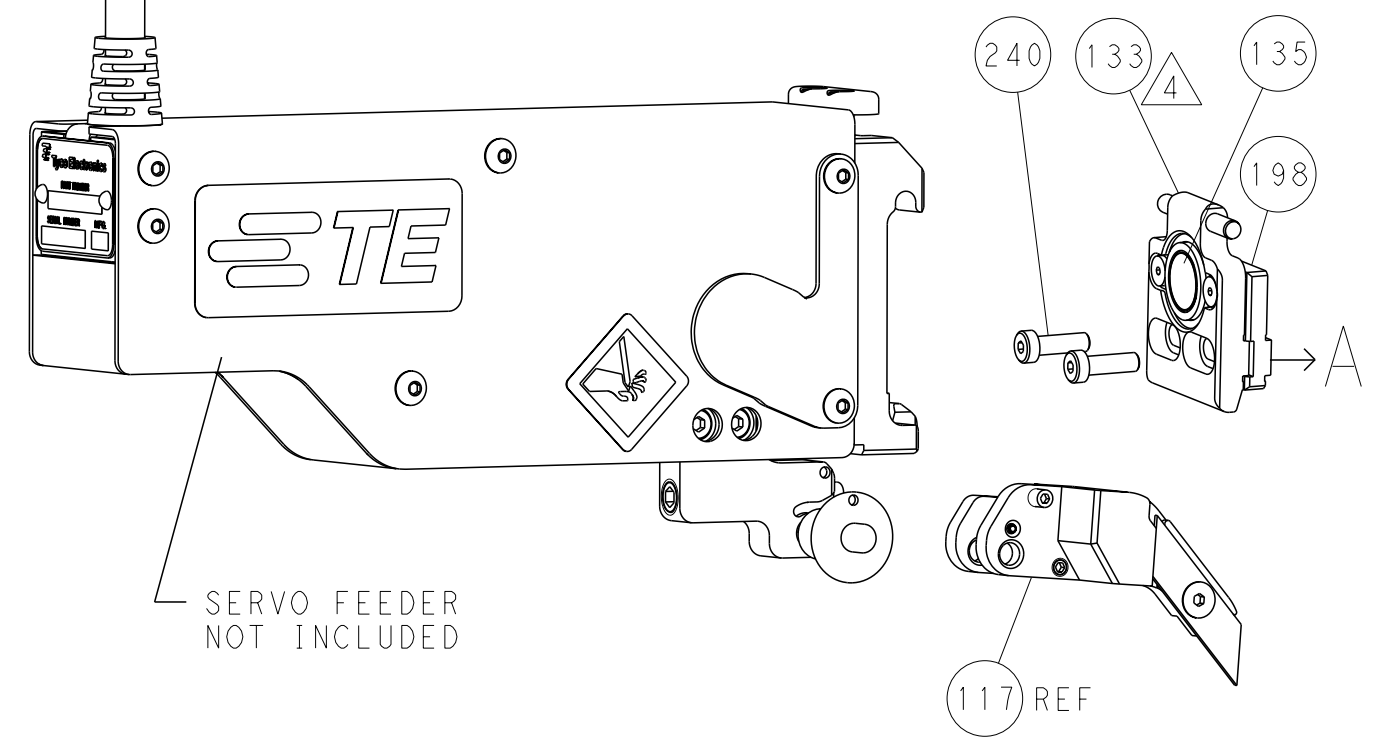
### FEED TYPE MECHANICAL



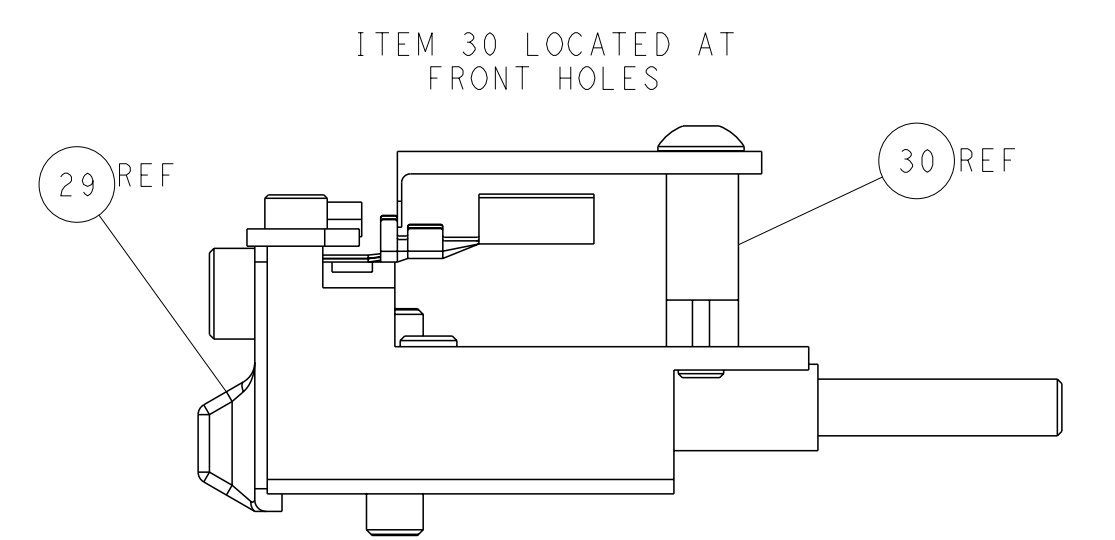
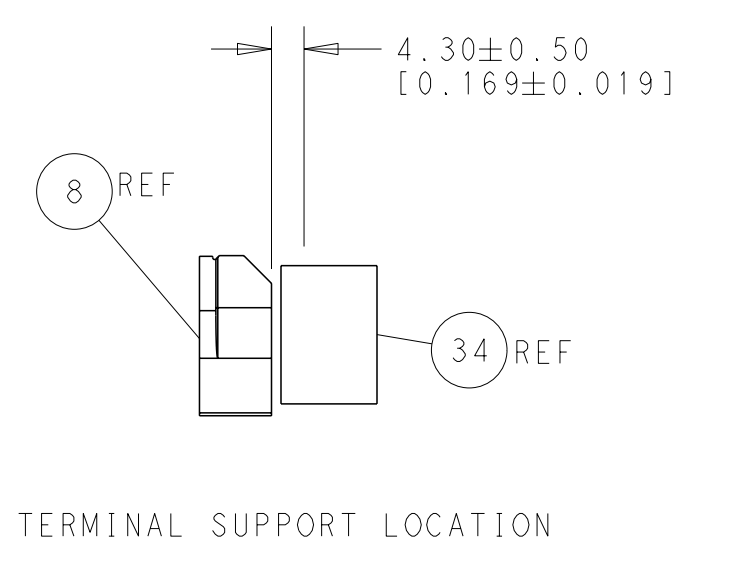
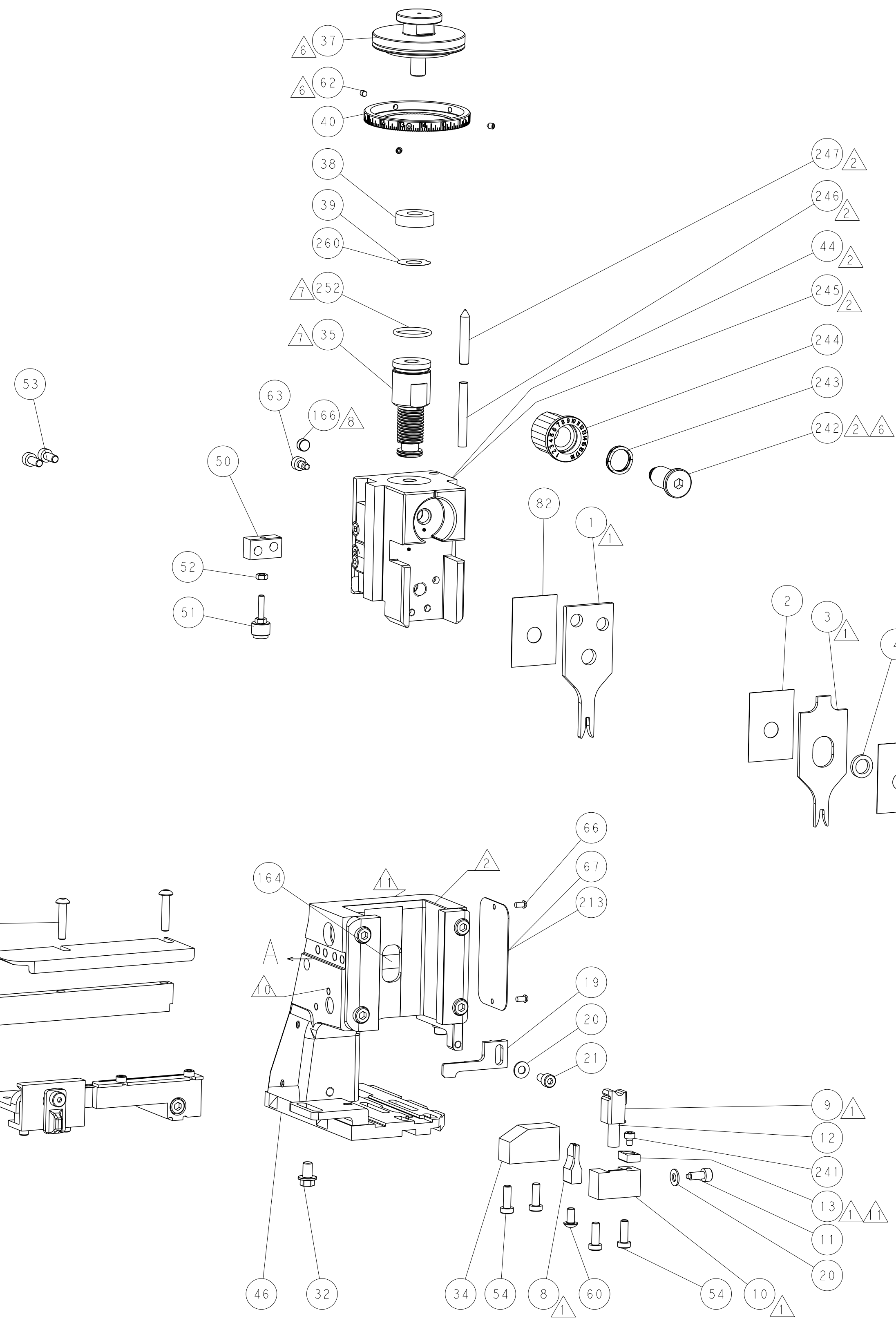
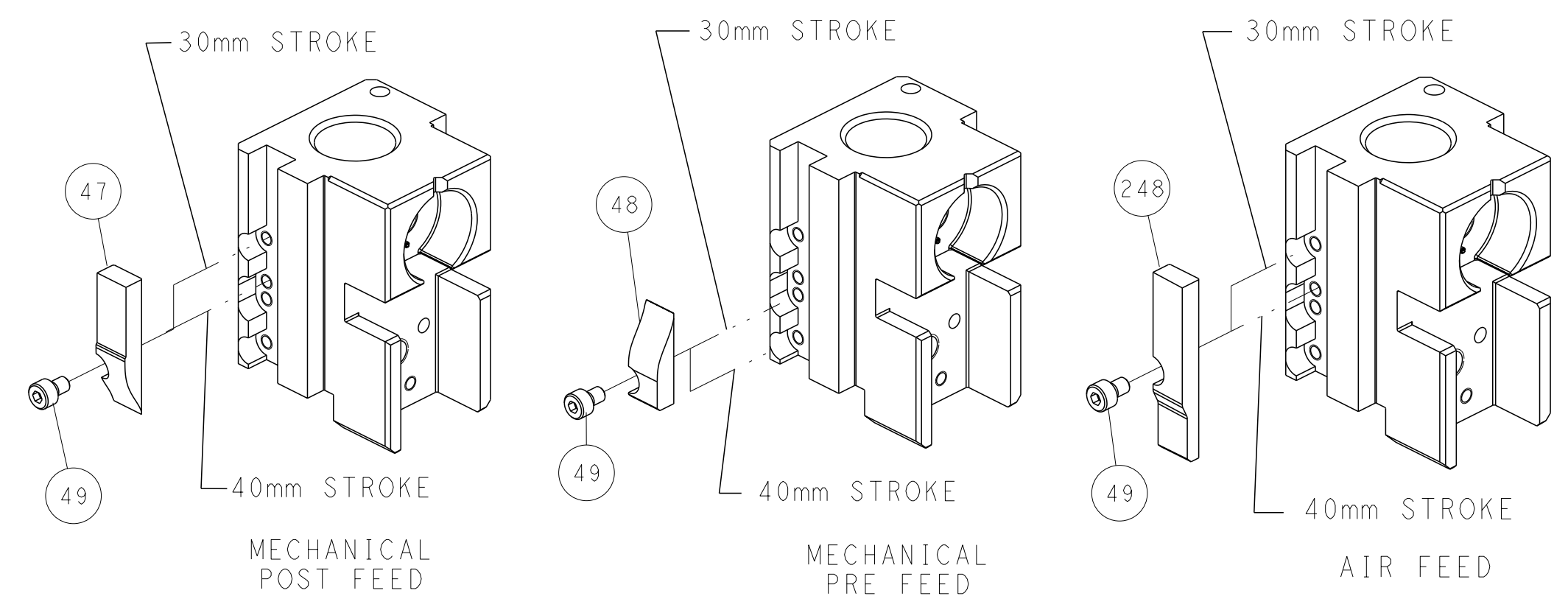
### PNEUMATIC



### SERVO LATCH PLATE



### CAM POSITIONS



**ATLANTIC VERSION**  
 Shown on sheets 1 of 4 & 2 of 4  
 (Pacific version shown on sheets 3 of 4 & 4 of 4)

|  |  |   |  |  |
|--|--|---|--|--|
| <small>THIS DRAWING IS UNPUBLISHED. RELEASED FOR PUBLICATION BY TYCO ELECTRONICS CORPORATION. ALL RIGHTS RESERVED.</small> |  | OWN: HOFFNER<br>CNY: T. ELBIN<br>APVD: T. ELBIN<br>PRODUCT SPEC: -<br>APPLICATION SPEC: -<br>WEIGHT: -<br>MATERIAL: - | DATE: 7MAY2015<br>DATE: 8MAY2015<br>NAME: Ocean Side Feed Applicator<br>SIZE: A1<br>CAGE CODE: 00779<br>DRAWING NO: C=2266781<br>SCALE: 1:2<br>SHEET: 2 of 4<br>REV: A | TE Connectivity<br>Harrisburg, PA 17105-3608 |
|--|--|---|--|--|

| PACIFIC VERSION TERMINATOR INTERFACE ADAPTER | PART NUMBER | REVISION | DESCRIPTION              | FEED TYPE         | APPLICATOR STYLE CONVERSION CHART |                       |           |             |           |           |                        |
|--|-------------|----------|--------------------------|-------------------|-----------------------------------|-----------------------|-----------|-------------|-----------|-----------|------------------------|
|  |             |          |                          |                   | CONVERT TO                        | PART NUMBERS REQUIRED |           |             |           |           |                        |
|  | 2-2266781-1 | A        | FINE CRIMP HEIGHT ADJUST | MECHANICAL        | PNEUMATIC FEED                    | 2119950-1             | 1338685-1 | 5-18022-5   | 2119641-2 | 2119799-1 | 2063440-1              |
|  |             |          |                          |                   | SERVO LATCH PLATE                 | 2119951-1             | -         | 8-2266781-5 | 1901094-3 | -         | 2168400-6 (QUANTITY 2) |
|  |             |          |                          |                   | SMART APPLICATOR                  | 2161326-1             | -         | 8-2266781-4 | -         | -         | -                      |
|  | 2-2266781-2 | A        | FINE CRIMP HEIGHT ADJUST | PNEUMATIC         | MECHANICAL FEED                   | 2119949-1             | 1338685-1 | 5-18022-5   | 2119653-2 | -         | -                      |
|  |             |          |                          |                   | SERVO LATCH PLATE                 | 2119951-1             | -         | 8-2266781-5 | 1901094-3 | -         | 2168400-6 (QUANTITY 2) |
|  |             |          |                          |                   | SMART APPLICATOR                  | 2161326-1             | -         | 8-2266781-4 | -         | -         | -                      |
|  | 2-2266781-5 | A        | FINE CRIMP HEIGHT ADJUST | SERVO LATCH PLATE | MECHANICAL FEED                   | 2119949-1             | 1338685-1 | 5-18022-5   | 2119653-2 | -         | -                      |
|  |             |          |                          |                   | PNEUMATIC FEED                    | 2119950-1             | 1338685-1 | 5-18022-5   | 2119641-2 | 2119799-1 | 2063440-1              |
|  | 2-2266781-7 | A        | FINE CRIMP HEIGHT ADJUST | NONE              | -                                 | -                     | -         | -           | -         | -         | -                      |
|  | 7-2266781-7 | A        | CRIMP TOOLING KIT        | -                 | -                                 | -                     | -         | -           | -         | -         | -                      |

| APPLICATOR DATA                      |                |      |
|--------------------------------------|----------------|------|
| CRIMP                                | SIZE           | TYPE |
| WIRE                                 | 1.88 mm (.074) | F    |
| INSUL                                | 2.54 mm (.100) | F    |
| APPLICATOR INSTRUCTIONS<br>408-10389 |                |      |

| TERMINAL DATA: DELPHI TERMINAL DELPHI PACKARD CRIMP SPECIFICATION |                 |                              |                 |
|---|-----------------|------------------------------|-----------------|
| TERMINAL NAME: FEMALE DSO 2.8 TIN PLATED TERMINAL                 |                 |                              |                 |
| WIRE STRIP LENGTH   |                 | INSULATION DIAMETER RANGE    |                 |
| 3.52-3.90 mm (.139-.154 IN)                                       |                 | Ø1.45-2.40 mm (.057-.094 IN) |                 |
| TERMINAL APPLICATION SPECIFICATION                                |                 |                              |                 |
| TERMINALS APPLIED   |                 |                              |                 |
| TE TERMINAL   | DELPHI TERMINAL | TE TERMINAL                  | DELPHI TERMINAL |
| 2113139-1   | 15409039        |                              |                 |

| WIRE SIZE | CRIMP HEIGHT mm [INCH]         | CRIMP HEIGHT REFERENCE SETTING |
|-----------|--------------------------------|--------------------------------|
| 1.00mm2   | 1.45 +/- 0.05 [0.057 +/- .002] | 4.0                            |
| 0.80mm2   | 1.35 +/- 0.05 [0.053 +/- .002] | 5.0                            |
| 0.50mm2   | 1.25 +/- 0.05 [0.049 +/- .002] | 6.1                            |
| 0.35mm2   | 1.15 +/- 0.05 [0.045 +/- .002] | 7.3                            |

- RECOMMENDED SPARE PARTS
- GREASE BEARING SURFACES LIGHTLY
- 3. LUBRICATE DAILY PER THE APPLICATOR INSTRUCTION SHEET SUPPLIED WITH THE APPLICATOR.
- 4. APPLICATOR SPECIFIC DATA TO BE ENTERED INTO BLANK MEMORY CHIP AT ASSEMBLY. SEE BELOW FOR PART NUMBER:  
 MECHANICAL FEED WITH "SMART APPLICATOR" CONVERSION: 8-2266781-4  
 PNEUMATIC FEED WITH "SMART APPLICATOR" CONVERSION: 8-2266781-4  
 SERVO FEED WITH "FINE CRIMP HEIGHT ADJUST": 8-2266781-5
- 5. ADJUSTMENT OF THE STRIPPER MAY BE REQUIRED WHEN MOVING THE APPLICATOR BETWEEN BENCH AND LEADMAKER APPLICATIONS.
- 6. APPLY PART NUMBER 1-23419-5 LOCTITE TO THREADS OF ITEM 62. APPLY PART NUMBER 2-23419-6 LOCTITE TO THREADS OF ITEM 242.
- GREASE THREADS, GROOVE AND O-RING ON ITEMS 139 & 152.
- 8. MAGNET MUST BE ORIENTED CORRECTLY IN ORDER TO PROPERLY ACTUATE THE COUNTER.
- 9. CRIMP HEIGHT REFERENCE SETTING WAS THE SETTING USED WHEN THE APPLICATOR WAS QUALIFIED AT THE FACTORY. ADJUSTMENT MAY BE NECESSARY WHEN RUNNING APPLICATOR IN THE FIELD.
- 10. SPARE FEED CAM STORAGE LOCATION REFER TO INSTRUCTION SHEET FOR ADDITIONAL INFORMATION.
- 11. TO CONVERT THE APPLICATOR TO A NON-CARRIER CUTTING STYLE, REMOVE ITEM 13 AND ATTACH TO THE LOCATION ON BACK SIDE OF THE HOUSING. REFER TO INSTRUCTION SHEET FOR ADDITIONAL INFORMATION.

**\*WARNING**  
 ON INSTALLATION, SET WIRE DISC, ITEM 40 TO LARGEST WIRE SIZE SETTING. USE OF SETTINGS BELOW MINIMUM REQUIRED CRIMP HEIGHT SETTING WILL CAUSE DAMAGE TO CRIMP TOOLING.

**PACIFIC VERSION**  
 Shown on sheets 3 of 4 & 4 of 4  
 (Atlantic version shown on sheets 1 of 4 & 2 of 4)

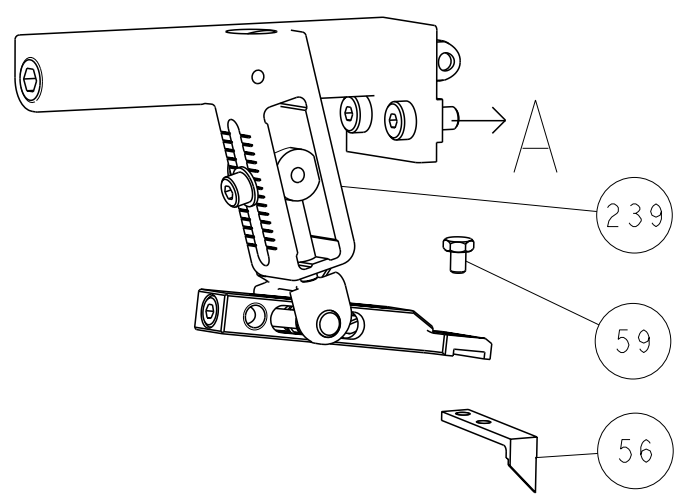
| SET UP GAUGE | LOC | DIST | REVISIONS |             |    |      |
|--------------|-----|------|-----------|-------------|----|------|
| 2119599-1    | A   | 66   | #         | DATE        | BY | APPV |
|              |     |      | -         | SEE SHEET 1 |    |      |

|   |     |     |     |     |             |                                     |     |
|---|-----|-----|-----|-----|-------------|-------------------------------------|-----|
| - | 1   | 1   | 1   | 1   | 2119782-1   | FINE ADJUST HEAD ASM, PACIFIC STYLE | 251 |
| - | -   | -   | 1   | -   | 2119640-1   | PUSH ROD, AIR FEED                  | 250 |
| - | -   | -   | 1   | -   | 2079988-1   | BUSHING, LCH5-12, MISUMI            | 249 |
| - | 1   | 1   | 1   | 1   | 1-22279-3   | SPRING, COMPRESSION                 | 246 |
| - | 1   | 1   | 1   | 1   | 2119082-4   | CAM, SNAIL, INSULATION ADJUSTMENT   | 244 |
| - | 1   | 1   | 1   | 1   | 2079764-1   | WASHER, WAVE SPRING, CREST-TO-CREST | 243 |
| - | 1   | 1   | 1   | 1   | 2119083-1   | RETAINER, INSULATION DIAL           | 242 |
| - | 1   | 1   | 1   | 1   | 7-18023-7   | SCR, SKT HD CAP M3 X 4.0            | 241 |
| - | -   | 2   | -   | -   | 2168400-6   | SHCS, LOW HEAD, RoHS, M5 X 16       | 240 |
| - | -   | -   | -   | 1   | 2119580-1   | MECHANICAL FEED ASSEMBLY            | 239 |
| - | -   | -   | 1   | -   | 2063440-1   | AIR FEED MODULE                     | 238 |
| - | -   | 1   | -   | -   | 2119740-2   | TAG, IDENTIFICATION                 | 213 |
| - | -   | 1   | -   | -   | 1901094-3   | SPACER, FEEDER                      | 198 |
| - | -   | -   | 2   | -   | 21045-3     | RING, RETAIN, EXTERN, 3/16 CRESCENT | 172 |
| - | 1   | 1   | 1   | 1   | 994969-1    | MAGNET, RARE EARTH HIGH ENERGY      | 166 |
| - | REF | REF | REF | REF | 994970-2    | COUNTER, MAGNETIC                   | 164 |
| - | -   | -   | 1   | -   | 240638-1    | SPRING, FEED FINGER                 | 163 |
| - | 1   | 1   | 1   | 1   | 8-21084-1   | O-RING, .801 ID, .070 DIA. MAT.     | 152 |
| - | -   | -   | 1   | -   | 2119641-2   | FEED CAM, AIR FEED                  | 151 |
| - | 1   | 1   | 1   | 1   | 2119798-2   | DETENT PIN                          | 145 |
| - | 1   | 1   | 1   | 1   | 2079383-8   | SCR, BHSC, RoHS (M4 X 16)           | 144 |
| - | 4   | 4   | 4   | 4   | 2168400-5   | SHCS, LOW HEAD, RoHS, M4 X 20       | 143 |
| - | -   | -   | -   | 1   | 2119653-2   | FEED CAM, POST FEED                 | 142 |
| - | 1   | 1   | 1   | 1   | 1-2119656-0 | APPLICATOR BASIC ASSEMBLY, SF       | 141 |
| - | 1   | 1   | 1   | 1   | 2119650-1   | RAM, ASIAN STYLE, SIDE FEED         | 140 |
| - | 1   | 1   | 1   | 1   | 2119092-2   | BOLT, ADJUSTMENT                    | 139 |
| - | -   | -   | 1   | -   | 3-23627-7   | PIN, RETAIN, GRVD, 3/16 X .854      | 137 |
| - | -   | -   | 1   | -   | 2119799-1   | HOLDER, FEED FINGER, AF             | 136 |
| - | -   | REF | -   | -   | SEE NOTE 4  | MEMORY CHIP, PROGRAMMED             | 135 |
| - | -   | 1   | -   | -   | 1633743-1   | SERVO FEED LATCH ASM                | 133 |
| - | -   | REF | -   | -   | 2119944-1   | FEED FINGER ASSEMBLY, SF            | 117 |
| - | 1   | 1   | 1   | 1   | 455888-4    | SPACER, CRIMPER                     | 82  |
| - | 1   | 1   | 1   | 1   | 2119956-1   | DOCUMENTATION PACKAGE               | 71  |
| - | 1   | -   | 1   | 1   | 2119740-1   | TAG, IDENTIFICATION                 | 67  |
| - | 2   | 2   | 2   | 2   | 2168078-1   | SCREW, DRIVE, RH, RoHS, 2 x .188    | 66  |
| - | 1   | 1   | 1   | 1   | 2119793-1   | LIMITER, ADJUSTMENT BOLT            | 63  |
| - | 3   | 3   | 3   | 3   | 992763-5    | SCR, SET, SOC, CONE POINT, M3 X 4.0 | 62  |
| - | -   | -   | 1   | 1   | 5-18022-5   | SCR, HEX HD CAP, M4 X 6.0           | 59  |
| - | -   | -   | 1   | 1   | 1338685-1   | PAWL, FEED                          | 56  |
| - | 2   | 2   | 2   | 2   | 1-2168083-0 | SCR, SKT HD CAP, RoHS, M4 X 10      | 53  |
| - | 1   | 1   | 1   | 1   | 5018030-1   | NUT, HEX, REG, RoHS, M3             | 52  |
| - | 1   | 1   | 1   | 1   | 811242-5    | BUMPER, HOLD DOWN                   | 51  |
| - | 1   | 1   | 1   | 1   | 690753-2    | SPACER, TONKER                      | 50  |
| - | -   | -   | 1   | 2   | 18023-9     | SCR, SKT HD CAP M4 X 6.0            | 49  |
| - | -   | -   | -   | 1   | 2119652-1   | FEED CAM, PRE FEED                  | 48  |
| - | 1   | 1   | 1   | 1   | 2079383-7   | SCR, BHSC, RoHS (M8 X 25)           | 41  |
| - | 1   | 1   | 1   | 1   | 2119645-1   | DISC, NUMBERED FA WIRE ADJUSTMENT   | 40  |
| - | 1   | 1   | 1   | 1   | 2119957-1   | APPLICATOR SHIM PACK                | 39  |
| - | 1   | 1   | 1   | 1   | 2119644-1   | RAM WASHER, PRECISION               | 38  |
| - | 1   | 1   | 1   | 1   | 1752356-4   | SUPPORT, TERMINAL                   | 34  |
| - | 2   | 2   | 2   | 2   | 2079383-5   | SCR, BHSC, RoHS (M4 X 20)           | 33  |
| - | 1   | 1   | 1   | 1   | 2161328-1   | HEX HEAD, FLANGED, M5 X 8mm LONG    | 32  |
| - | 1   | 1   | 1   | 1   | 1-1320908-2 | SPACER, STRIP GUIDE                 | 30  |
| - | 1   | 1   | 1   | 1   | 2119959-1   | ASSEMBLY, STRIP GUIDE               | 29  |
| - | 1   | 1   | 1   | 1   | 455888-3    | SPACER, CRIMPER                     | 28  |
| - | 1   | 1   | 1   | 1   | 1320928-2   | STRIP GUIDE                         | 24  |
| - | 1   | 1   | 1   | 1   | 2168083-2   | SCR, SKT HD CAP, RoHS, M4 X 8.0     | 21  |
| - | 2   | 2   | 2   | 2   | 1-18028-2   | WASHER, FLAT, REG M4                | 20  |
| - | 1   | 1   | 1   | 1   | 2119533-1   | STRIPPER, SIDE FEED                 | 19  |
| - | 1   | 1   | 1   | 1   | 2119806-1   | INSERT, SHEAR                       | 13  |
| - | 1   | 1   | 1   | 1   | 3-22280-3   | SPRING, COMPRESSION                 | 12  |
| - | 1   | 1   | 1   | 1   | 1-356885-4  | STOP, SHEAR                         | 11  |
| - | 1   | 1   | 1   | 1   | 2119805-1   | SHEAR HOLDER, FRONT                 | 10  |
| - | 1   | 1   | 1   | 1   | 1803095-1   | FLOATING SHEAR, FRONT               | 9   |
| - | 1   | 1   | 1   | 1   | 8-1803054-4 | ANVIL, COMBINATION                  | 8   |
| - | -   | -   | -   | -   | -           | -                                   | 7   |
| - | -   | -   | -   | -   | -           | -                                   | 6   |
| - | 1   | 1   | 1   | 1   | 2119757-8   | DEPRESSOR, SHEAR                    | 5   |
| - | 1   | 1   | 1   | 1   | 2-238011-2  | BLOCK, CRIMPER SPACER               | 4   |
| - | 1   | 1   | 1   | 1   | 1-2119582-0 | CRIMPER, INSULATION F PREMIUM       | 3   |
| - | 1   | 1   | 1   | 1   | 455888-3    | SPACER, CRIMPER                     | 2   |
| - | 1   | 1   | 1   | 1   | 9-1633738-0 | CRIMPER, WIRE                       | 1   |

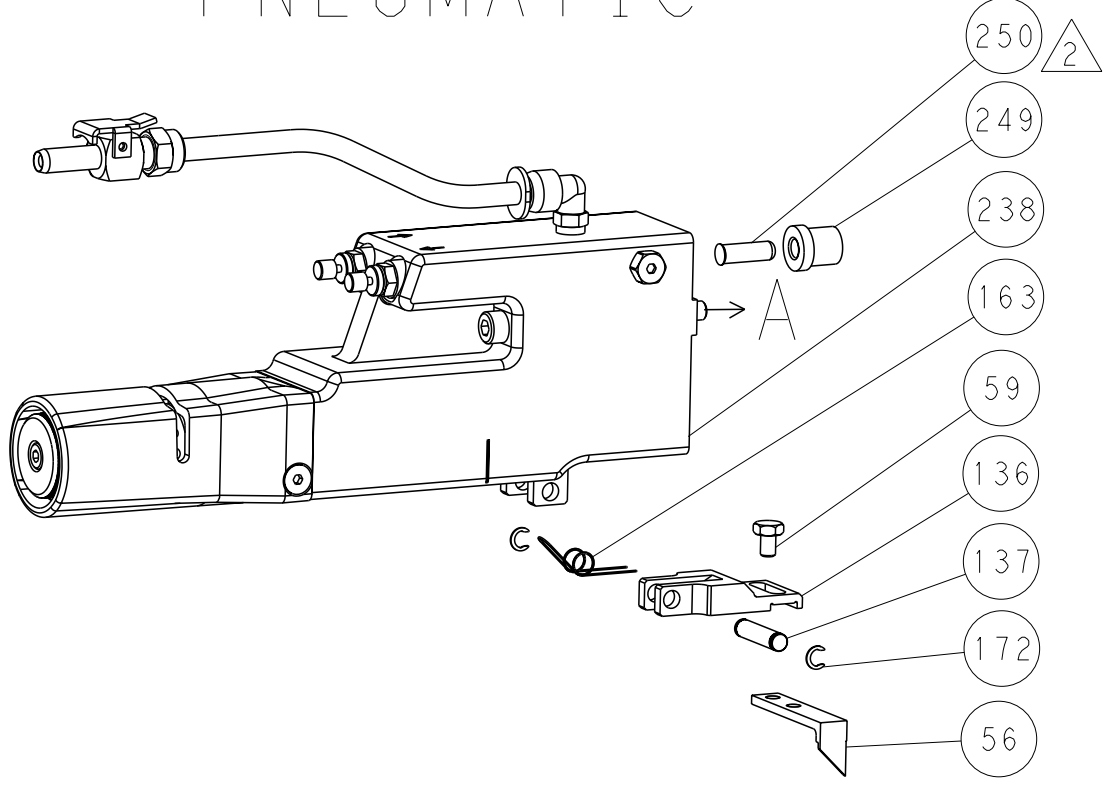
| DIMENSIONS: |              | TOLERANCES UNLESS OTHERWISE SPECIFIED: |            | DATE                                   | BY       | APPV     | NAME                      |
|-------------|--------------|--|------------|--|----------|----------|---------------------------|
| mm          | 0 PLC ±.5    | 1 PLC ±0.5                             | 2 PLC ±0.3 | MAY2015                                | HOFFNER  | T. ELBIN | TE Connectivity           |
|             | 3 PLC ±0.013 | 4 PLC ±0.001                           | ANGLES ±.1 | MAY2015                                | T. ELBIN | T. ELBIN | Harrisburg, PA 17105-3608 |
| MATERIAL    | FINISH       | WEIGHT                                 | SCALE      | Customer Accessible Production Drawing |          |          |                           |
|             |              |  | 1:2        | SHEET 3 of 4 REV A                     |          |          |                           |

| LOC |    | DIST |     | REVISIONS   |      |     |      |
|-----|----|------|-----|-------------|------|-----|------|
| A   | 66 | P    | LYR | DESCRIPTION | DATE | OWN | APVD |
|     |    | -    |     | SEE SHEET 1 |      |     |      |

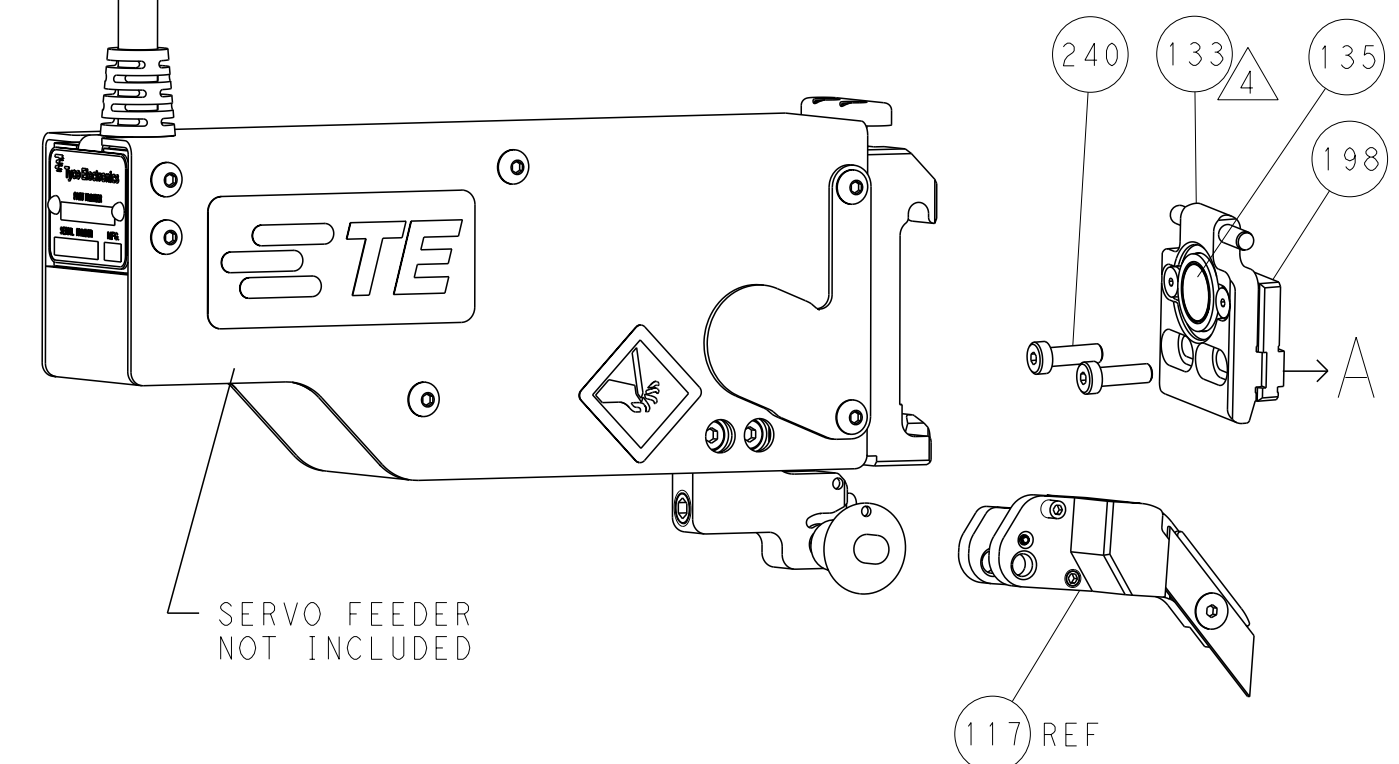
# FEED TYPE MECHANICAL



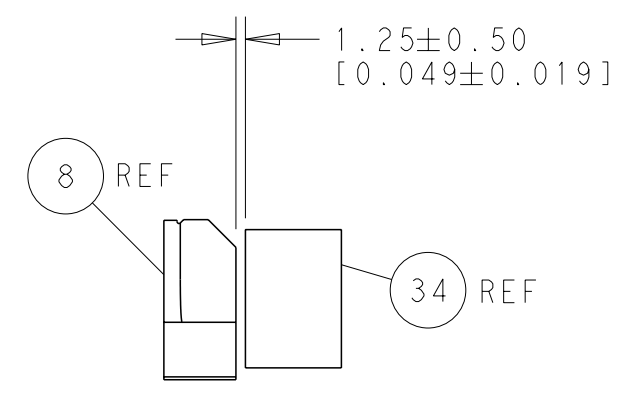
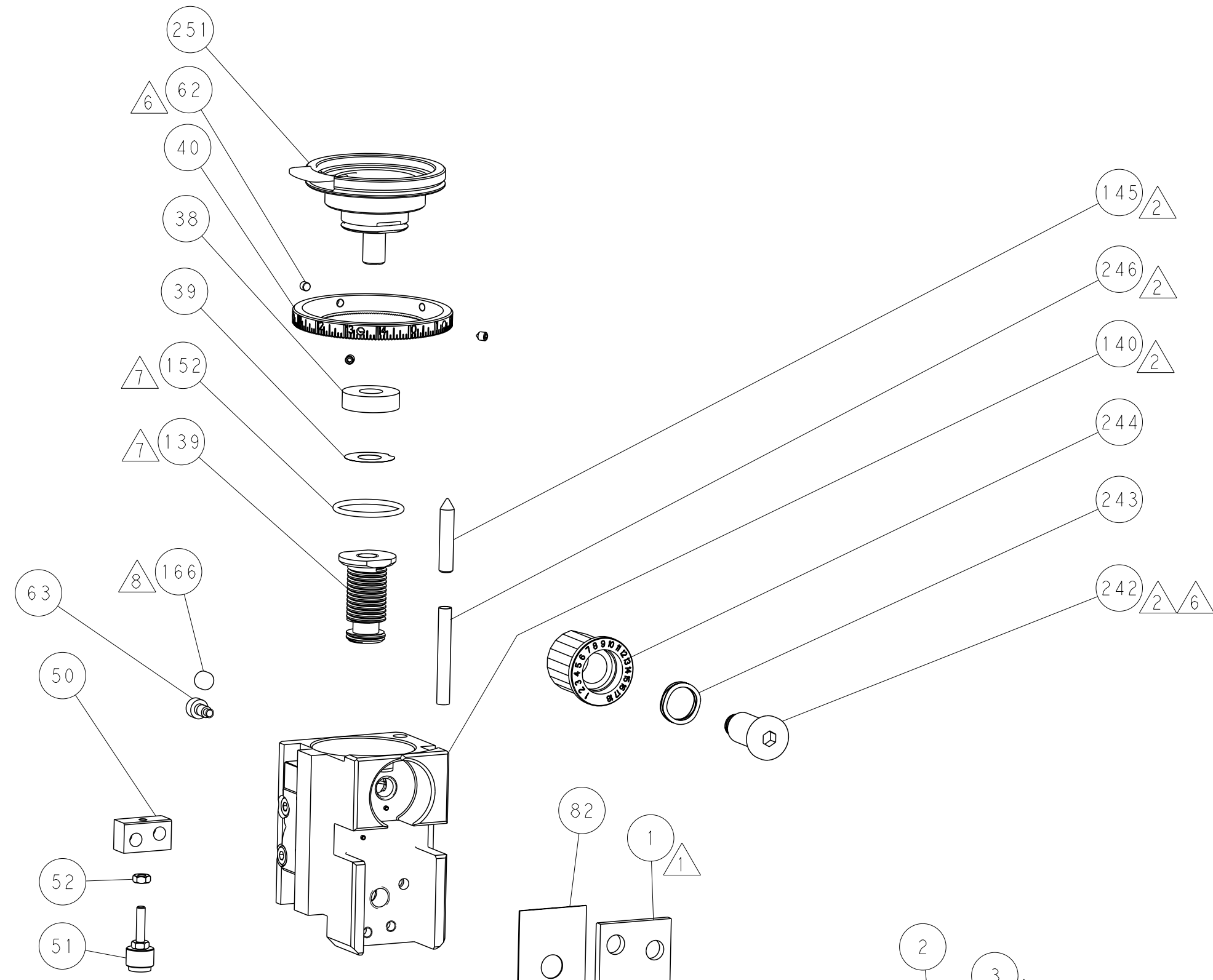
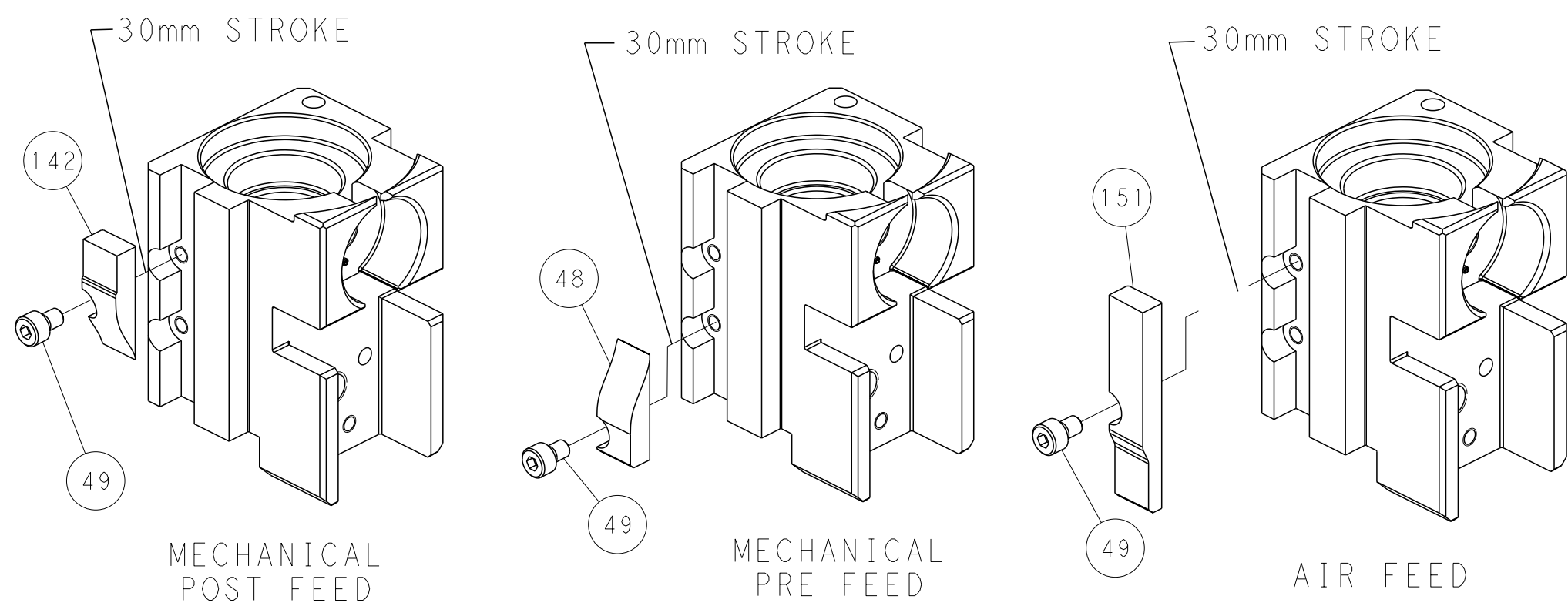
# PNEUMATIC



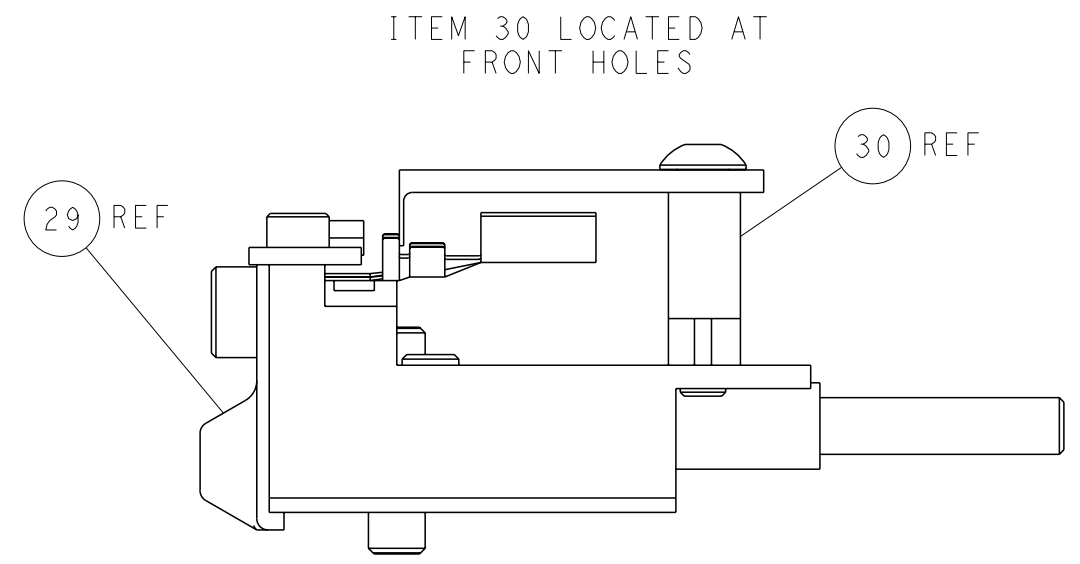
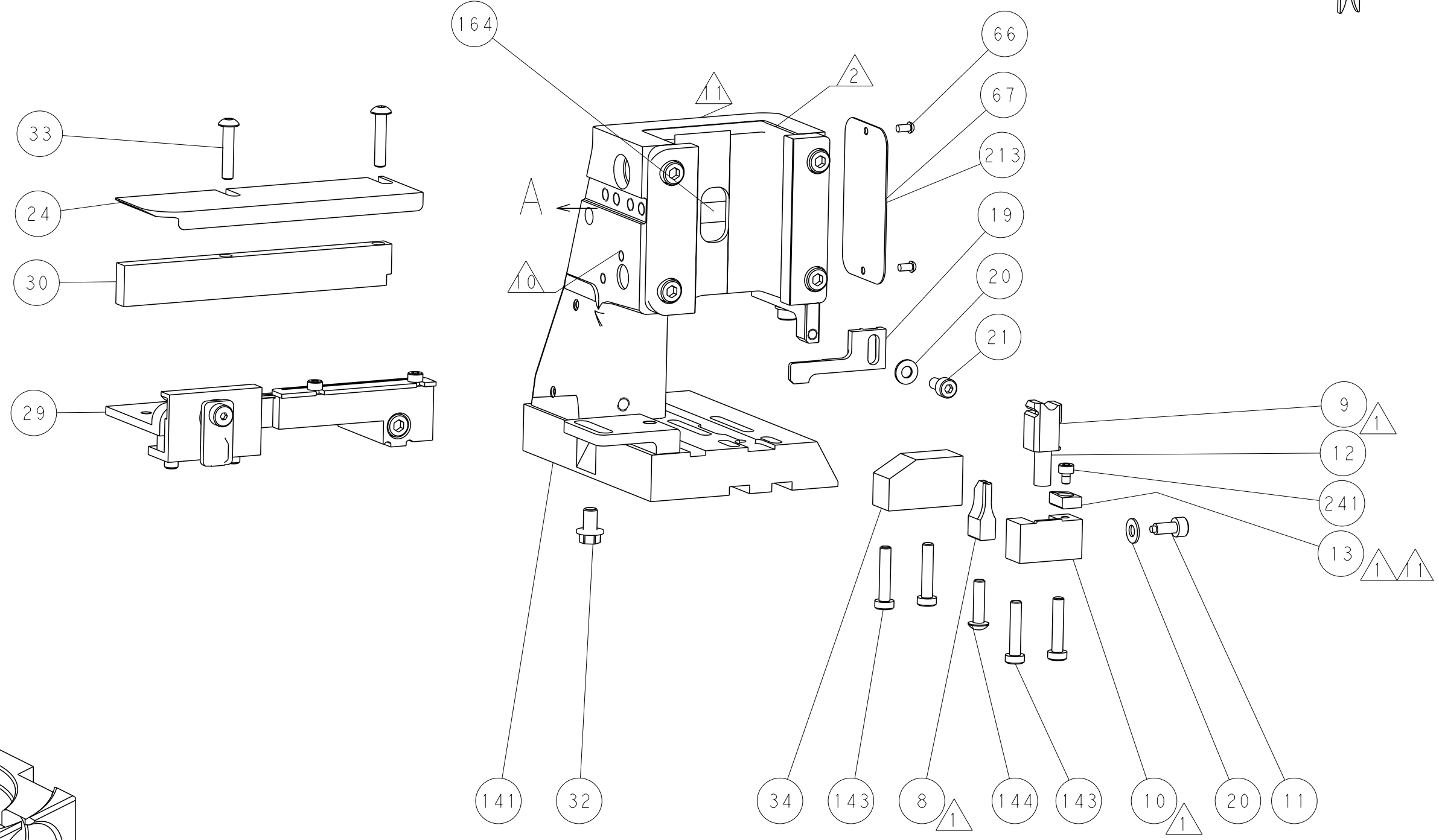
# SERVO LATCH PLATE



# CAM POSITIONS



TERMINAL SUPPORT LOCATION



FEED TRACK POSITION  
GUIDE BY INSULATION BARREL

**PACIFIC VERSION**  
 Shown on sheets 3 of 4 & 4 of 4  
 (Atlantic version shown on sheets 1 of 4 & 2 of 4)

|  |  |   |   |   |
|--|--|---|---|---|
| <small>THIS DRAWING IS A CONTROLLED DOCUMENT FOR TYCO ELECTRONICS CORPORATION. IT IS SUBJECT TO CHANGE AND THE USER MUST CONTACT THE ENGINEERING ORGANIZATION SHOULD BE CONTACTED FOR THE LATEST REVISION.</small> |  | DWN: HOFFNER<br>CBY: TELBIN<br>APVD: TELBIN   | DATE: 7MAY2015<br>DATE: 8MAY2015<br>DATE: 8MAY2015    | TE Connectivity<br>Harrisburg, PA 17105-3608          |
| DIMENSIONS: mm<br>   |  | TOLERANCES UNLESS OTHERWISE SPECIFIED:<br>0 PLC ±.<br>1 PLC ±0.5<br>2 PLC ±0.13<br>3 PLC ±0.013<br>4 PLC ±0.001<br>ANGLES FINISH ±. |   | NAME: Ocean Side Feed Applicator<br>APPLICATION SPEC: |
| MATERIAL:  |  | WEIGHT:   | SIZE: A1<br>CAGE CODE: 00779<br>DRAWING NO: C=2266781 | RESTRICTED TO:  |
| Customer Accessible Production Drawing   |  | SCALE: 1:2  | SHEET: 4 of 4   | REV: A  |