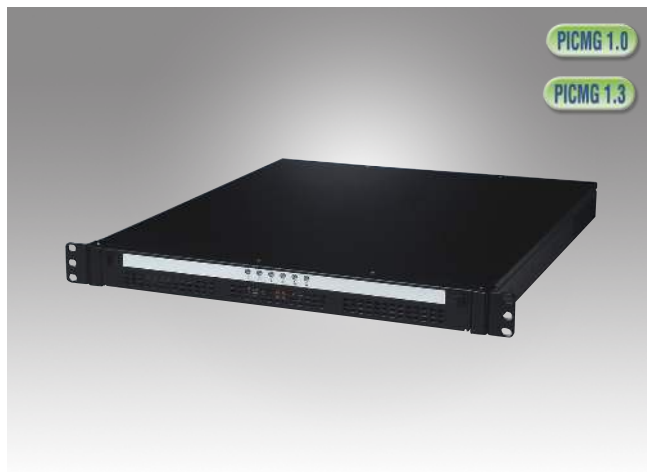


ACP-1010

1U Rackmount Chassis for ATX/Micro-ATX Motherboard



Features

- Supports ATX/MicroATX motherboards
- LED indicators for power, HDD, temperature, fan, LAN1 and LAN2
- Supports 1 expansion slot via riser card
- Supports both 250W/350W Flex ATX/PFC power supplies

CE FCC

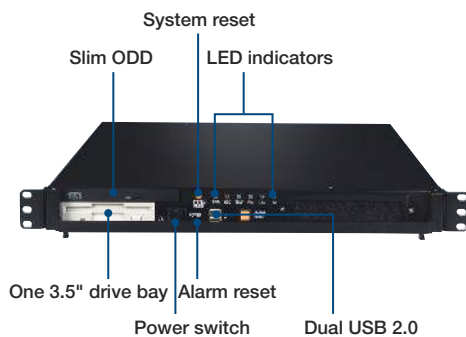
Specifications

		External	Internal
Driver bay	Slim Optical Disk Drive	1	-
	3.5"	1	1*
	2.5"	-	2*
Cooling	Fan	2 (4 cm/24 CFM each)	
Front I/O Interface	USB 2.0	2	
Miscellaneous	Notification LEDs	System: Power, HDD, Temperature, Fan, LAN1 and LAN2	
	Control	Power switch, system reset & alarm reset button	
	Rear panel	One 9-pin D-Sub opening	
Environment		Operating	Non-Operating
	Temperature	0 ~ 40 °C (32 ~ 104 °F)	-20 ~ 60 °C (-4 ~ 140 °F)
	Humidity	10 ~ 85% @ 40 °C, non-condensing	
	Vibration (5 ~ 500 Hz)	0.5 Grms	2 G
Physical Characteristics	Dimensions (W x H x D)	480 x 44 x 497 mm (19" x 1.7" x 19.6")	
	Weight	8 kg (17.6 lb)	

* Internal driver bay can choose 1 x 3.5" or 2 x 2.5"

* ACP-1010 supports up to CPU 65W under 35 °C for thermal concern.

Front View

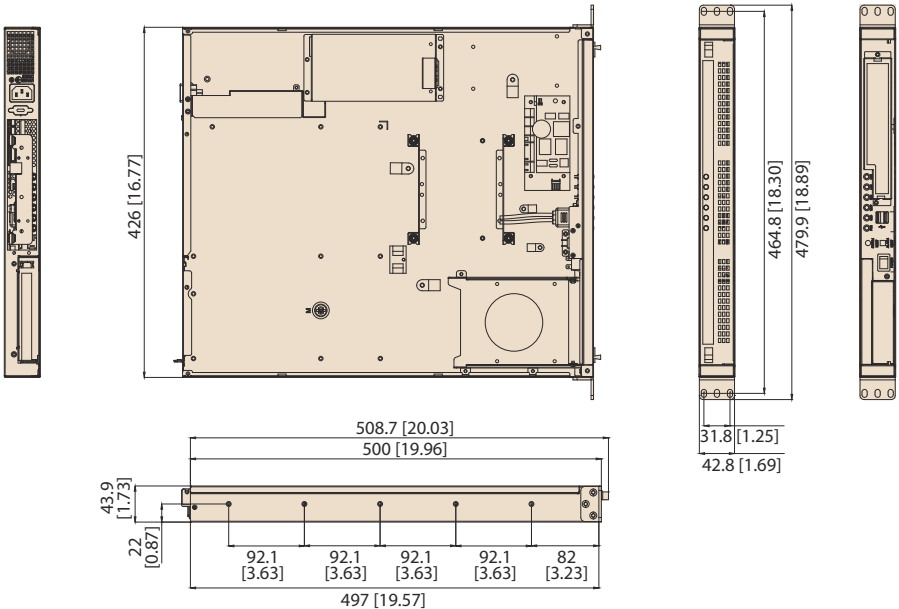


Back View



Dimensions

Unit: mm [inch]



Ordering Information

Part Number	Description
ACP-1010MB-00BE	MB version W/O PSU

* ACP-1010MB does not support AIMB-786 because the height of the audio connector is over 1U.

Power Supply Options

(For detailed power supply specs, please refer to Chapter 13)

Part Number	80 Plus Bronze	Wattage	Type	Input
PS8-250FATX-BB	Bronze	250W	Single	AC 100 ~ 240 V (full range)
PS8-350FATX-GB	Gold	350W	Single	AC 100 ~ 240 V (full range)

Spare Parts

Part Name	Description
2130007889S000	Filter 170 x 32 x 5 mm for ACP-1010

Optional Accessories

Part Name	Description
96CB-SATAPOWER-6P2	SATA power wire 6-pin to big 4-pin (for slim ODD)
I/O shield	
1960055954T000	I/O shield for AIMB-707/706/705/701/781/782/581
1960048353T000	I/O shield for AIMB-767/769/780/566/580
1960069682N001	I/O shield for AIMB-784
1960069666N101	I/O shield for AIMB-785