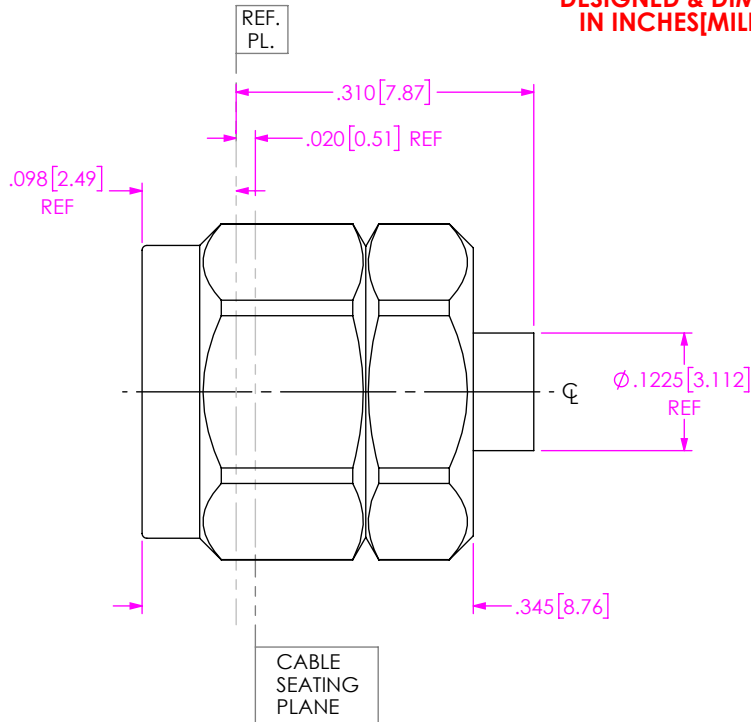


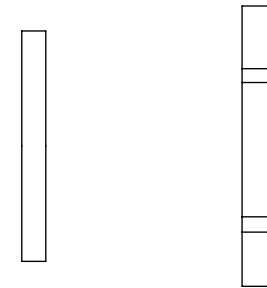
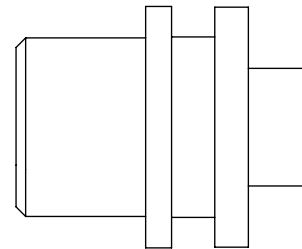
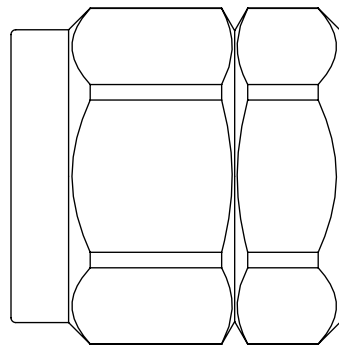
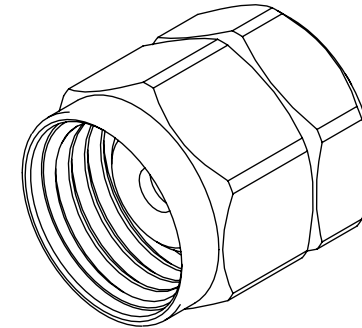
DO NOT SCALE FROM THIS PRINT

DESIGNED & DIMENSIONED IN INCHES[MILLIMETERS]

PRF18-P-C-EE-085-SD-X



- SERIES -18: 1.85 MM
- GENDER -P: PLUG
- TYPE -C: CABLE
- PLATING -EE: 50μ" EXTRA HEAVY GOLD CENTER CONTACT, 50μ" EXTRA HEAVY GOLD OUTER CONTACT
- PACKAGING -B: BULK (IN INCREMENTS OF 50) (BLANK): STANDARD PACKAGING
- TERMINATION -D: DIRECT SOLDER
- ORIENTATION -S: STRAIGHT
- CABLE TYPE -085: HARBOUR SS405



EXPLODED VIEW
NOT TO SCALE
(FOR CLARITY ONLY)

NOTES:

1. MATERIAL:
COUPLING NUT: STAINLESS STEEL
BODY, LOCK RING: BERYLLIUM COPPER
GASKET: SILICONE RUBBER
2. FINISH:
COUPLING NUT: PASSIVATED
BODY: 50μ" MIN. GOLD OVER 50μ" MIN. NICKEL PLATE
3. PCI P/N: 3140.
4. BULK PACKAGING OPTION (-B) FOR ORDERS IN INCREMENTS OF 50 PCS.

UNLESS OTHERWISE SPECIFIED, DIMENSIONS ARE IN INCHES.
TOLERANCES ARE:
DECIMALS ANGLES
.XX: ±.01 [0.3] 1°
.XXX: ±.005 [0.13]
.XXXX: ±.0005 [0.013]

PROPRIETARY NOTE
THIS DOCUMENT CONTAINS CONFIDENTIAL AND PROPRIETARY INFORMATION AND ALL DESIGN, MANUFACTURING, REPRODUCTION, USE, PATENT RIGHTS AND SALES RIGHTS ARE EXPRESSLY RESERVED BY SAMTEC, INC. THIS DOCUMENT SHALL NOT BE DISCLOSED, IN WHOLE OR PART, TO ANY UNAUTHORIZED PERSON OR ENTITY NOR REPRODUCED, TRANSFERRED OR INCORPORATED IN ANY OTHER PROJECT IN ANY MANNER WITHOUT THE EXPRESS WRITTEN CONSENT OF SAMTEC, INC.



520 PARK EAST BLVD, NEW ALBANY, IN 47150
PHONE: 812-944-6733 FAX: 812-948-5047
e-Mail: info@SAMTEC.com code 55322

DO NOT SCALE DRAWING

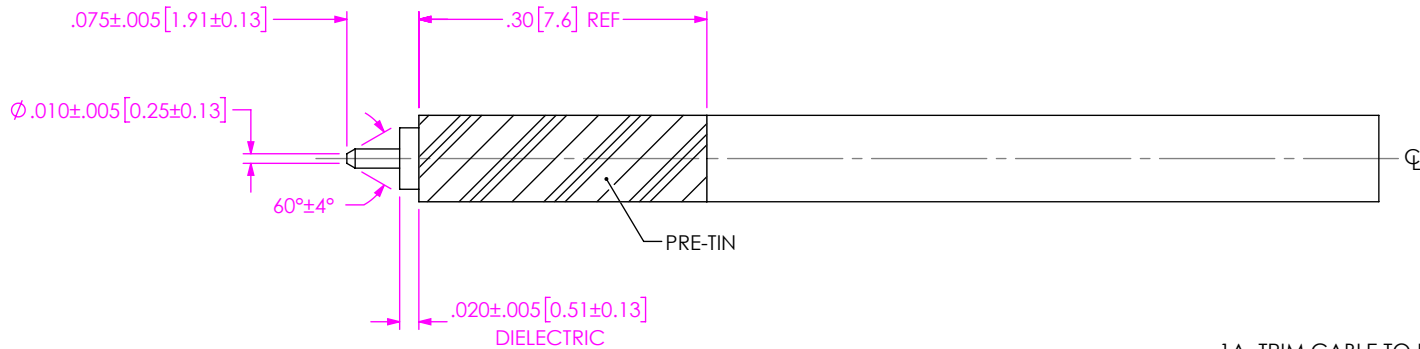
SHEET SCALE: 5:1

DESCRIPTION: 1.85MM PLUG, DIRECT SOLDER, NO CONTACT FOR RG-405 CABLE

DWG. NO. PRF18-P-C-EE-085-SD-X

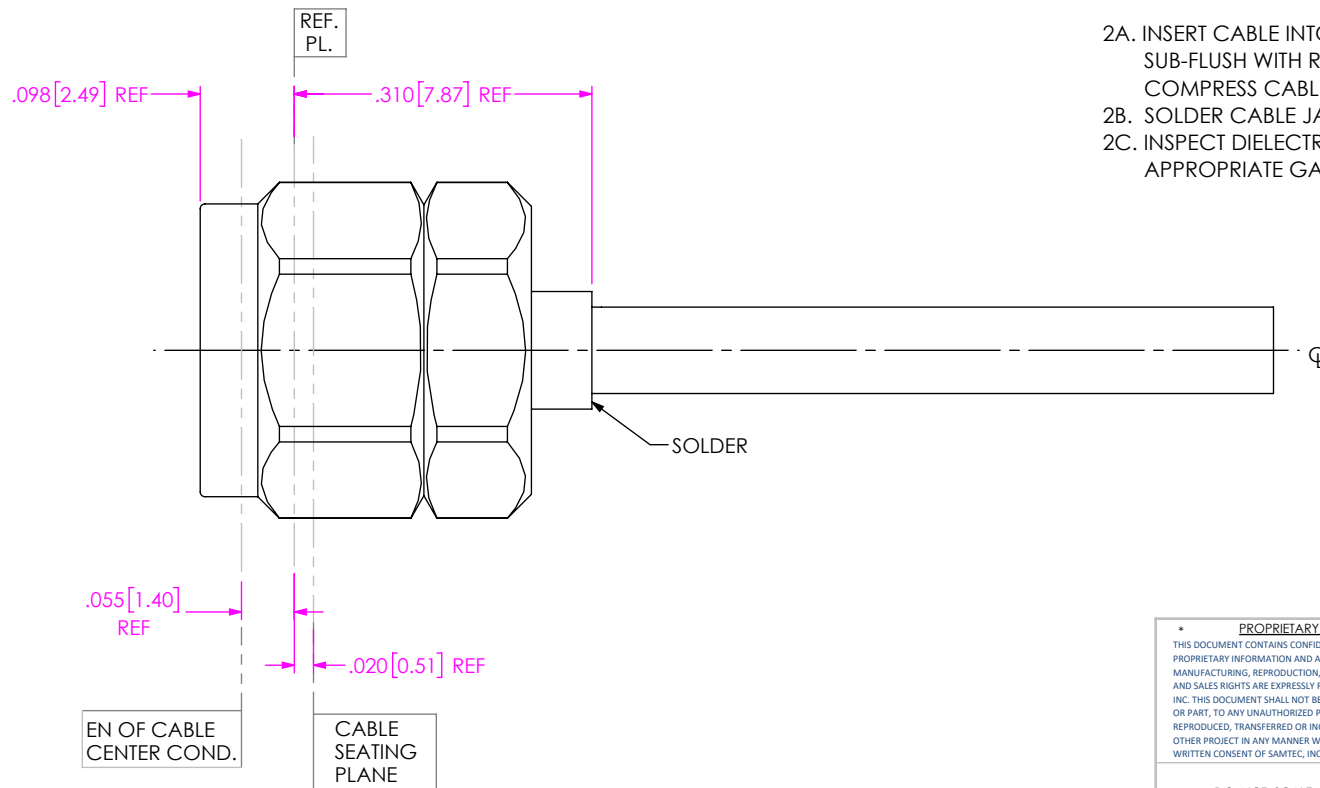
BY: EVE L 04/01/2019 SHEET 1 OF 2

CABLE APPLICATION VIEWS



1A. TRIM CABLE TO EXPOSE DIELECTRIC AND CENTER CONDUCTOR AS SHOWN.
 1B. PRE-TIN OUTER JACKET OVER APPROXIMATE LENGTH INDICATED.

IN-PROCESS VIEW 1



2A. INSERT CABLE INTO CONNECTOR BODY UNTIL DIELECTRIC IS .0015 SUB-FLUSH WITH REFERENCE PLANE. (USE APPROPRIATE STOP TOOL. COMPRESS CABLE DIELECTRIC SLIGHTLY IF REQUIRED).
 2B. SOLDER CABLE JACKET TO BODY WHERE SHOWN.
 2C. INSPECT DIELECTRIC RECESSION (.000/.003) SUB-FLUSH USING APPROPRIATE GAGE.

DISTANCE FROM END OF CABLE CENTER COND. TO REF. PL. IS -.055(REF.)

IN-PROCESS VIEW 2

PROPRIETARY NOTE
 THIS DOCUMENT CONTAINS CONFIDENTIAL AND PROPRIETARY INFORMATION AND ALL DESIGN, MANUFACTURING, REPRODUCTION, USE, PATENT RIGHTS AND SALES RIGHTS ARE EXPRESSLY RESERVED BY SAMTEC, INC. THIS DOCUMENT SHALL NOT BE DISCLOSED, IN WHOLE OR PART, TO ANY UNAUTHORIZED PERSON OR ENTITY NOR REPRODUCED, TRANSFERRED OR INCORPORATED IN ANY OTHER PROJECT IN ANY MANNER WITHOUT THE EXPRESS WRITTEN CONSENT OF SAMTEC, INC.



520 PARK EAST BLVD, NEW ALBANY, IN 47150
 PHONE: 812-944-6733 FAX: 812-948-5047
 e-Mail info@SAMTEC.com code 55322

DO NOT SCALE DRAWING

SHEET SCALE: 5:1

DESCRIPTION: 1.85MM PLUG, DIRECT SOLDER, NO CONTACT FOR RG-405 CABLE

DWG. NO. PRF18-P-C-EE-085-SD-X

BY: EVE L 04/01/2019 SHEET 2 OF 2