

MATERIALS AND FINISHES:

BODY FRONT, CAP, JAM NUT: BRASS
PLATED: NICKEL (100 MICROINCHES MIN)

BODY REAR: BRASS
PLATED: TIN (150 MICROINCHES MIN)

CONTACT: BRASS
PLATED: GOLD (10 MICROINCHES MIN)

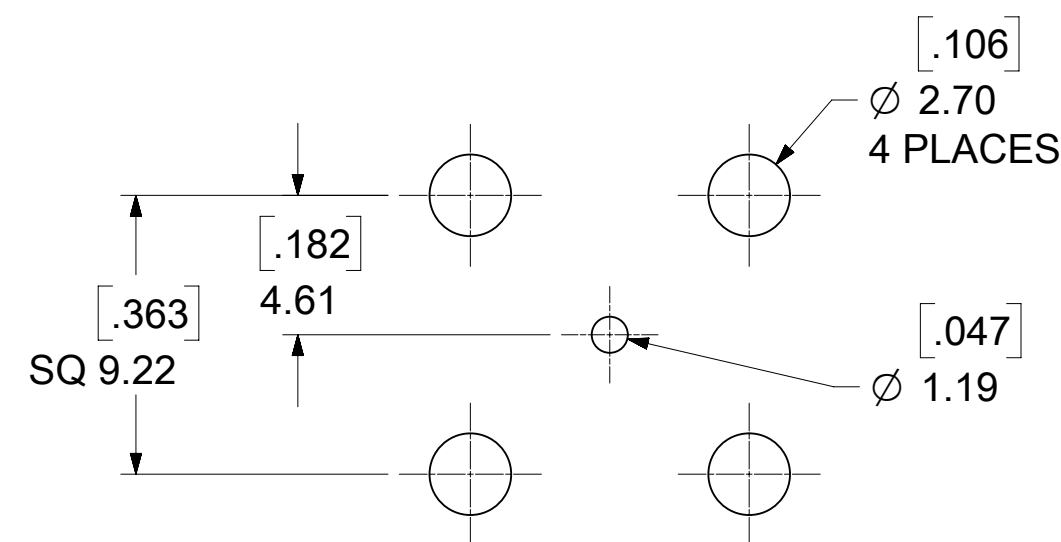
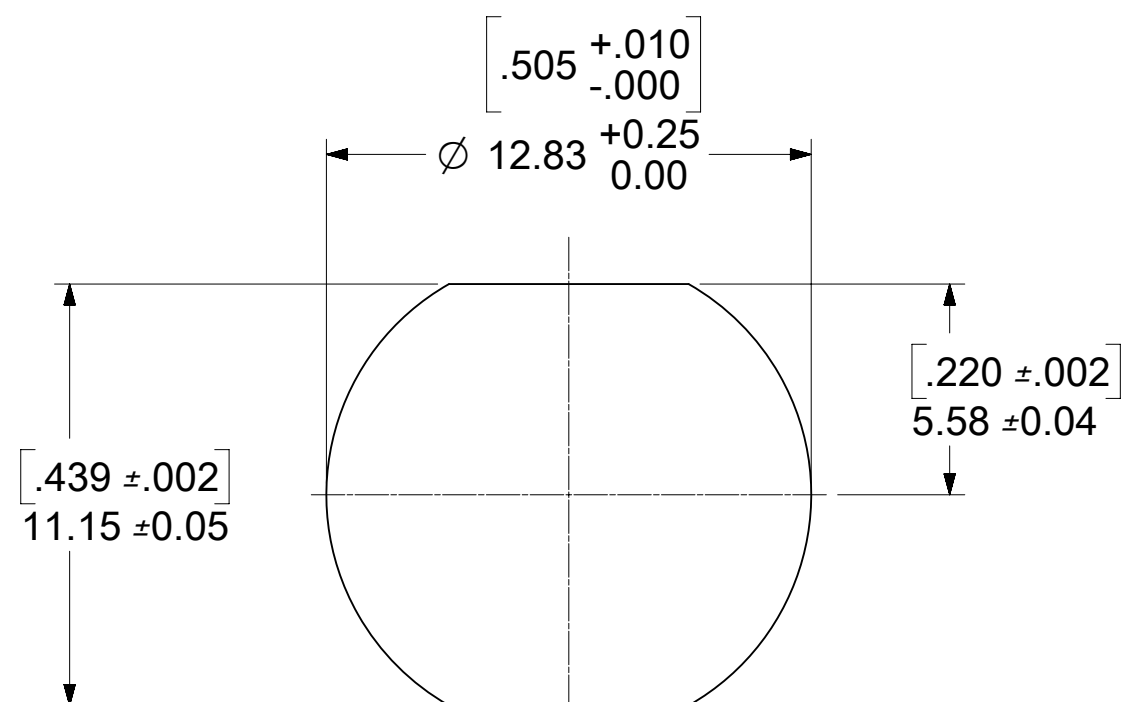
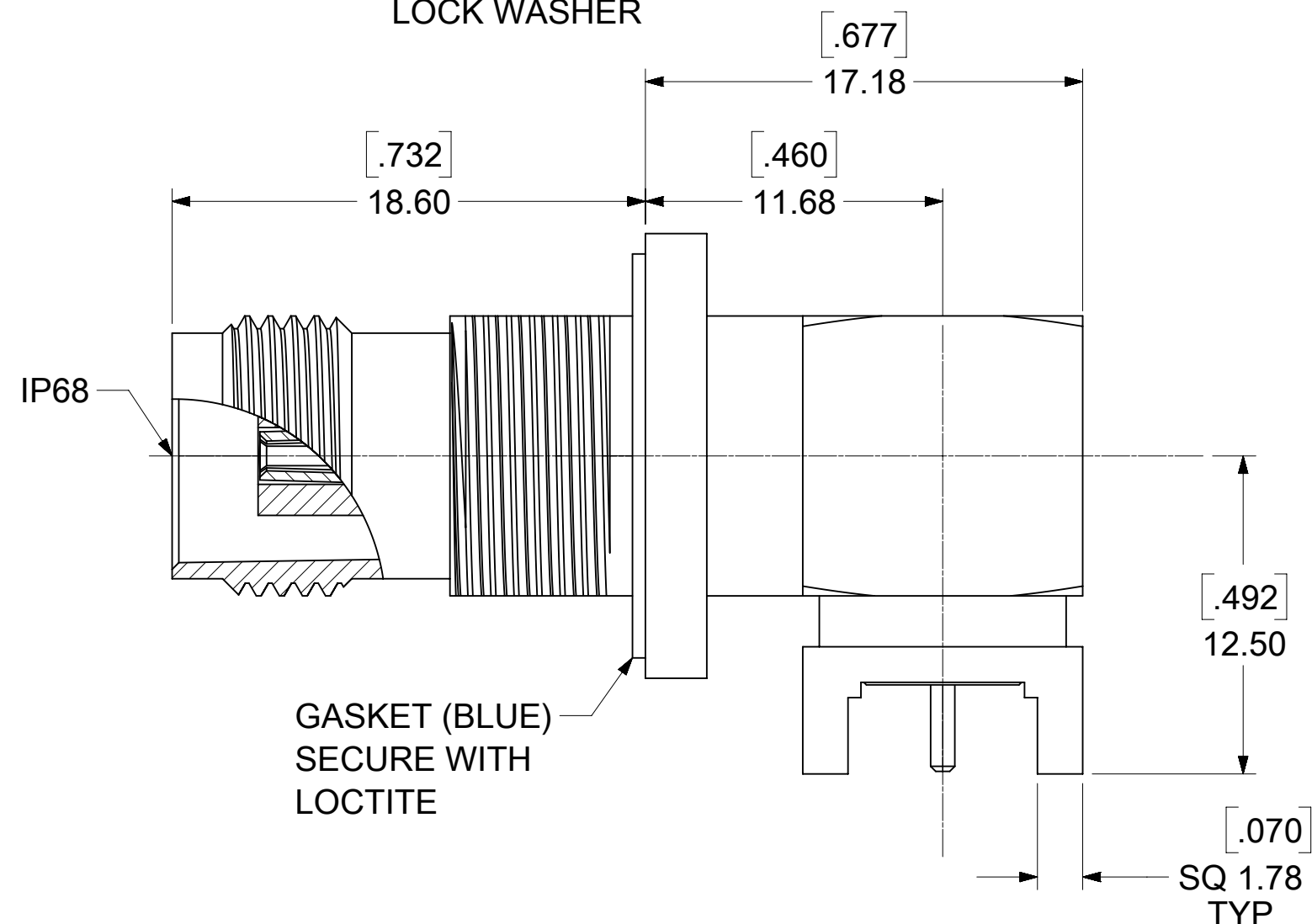
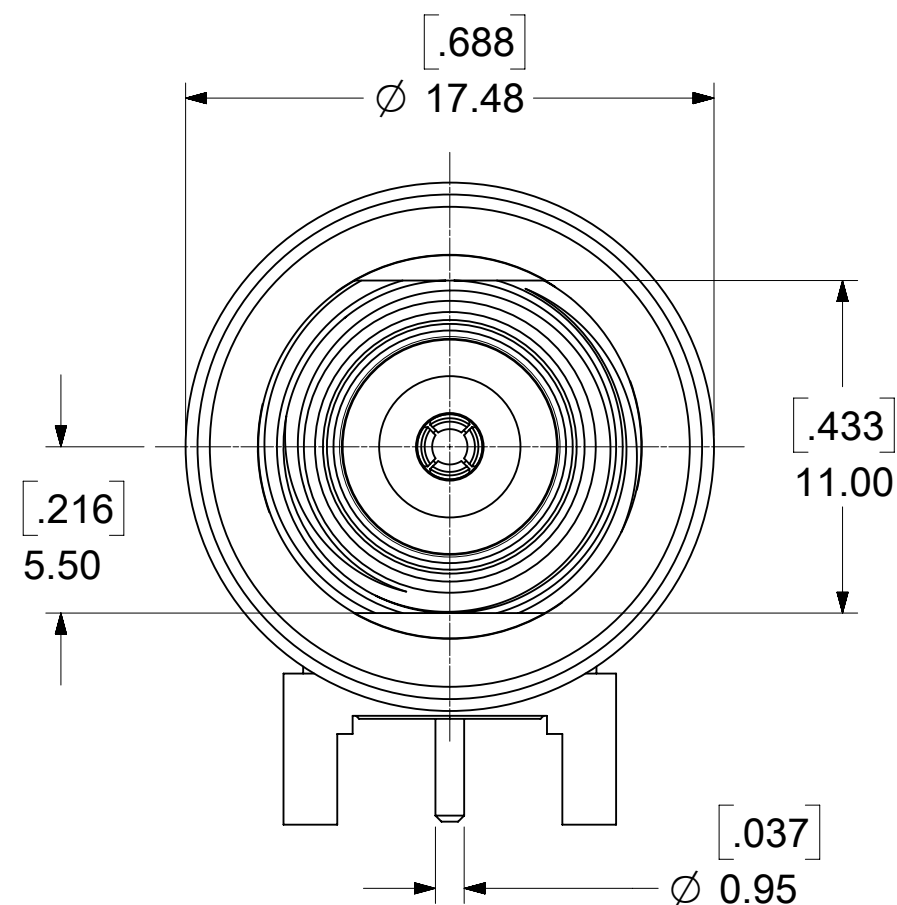
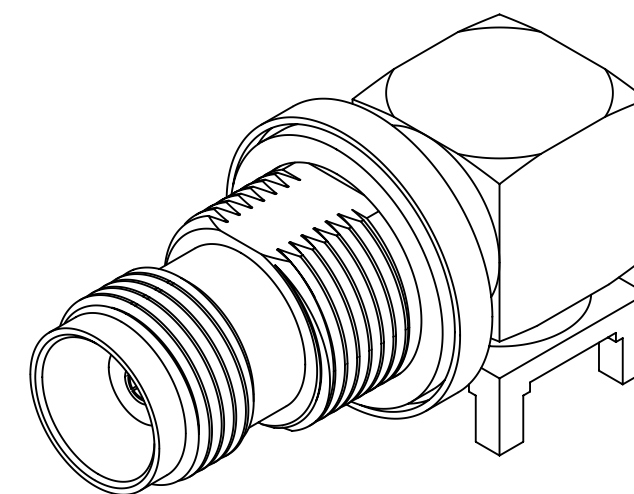
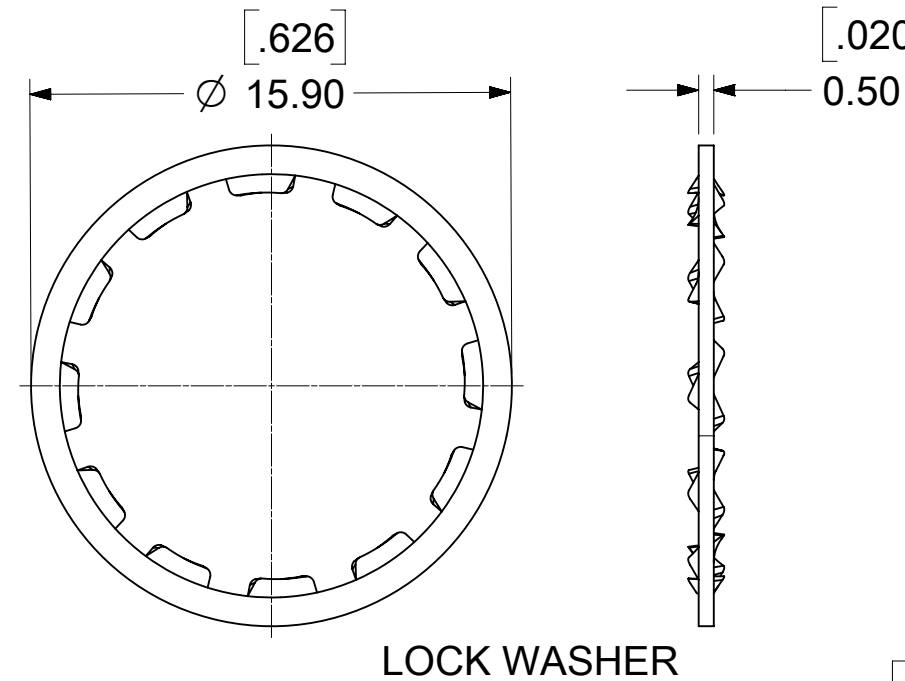
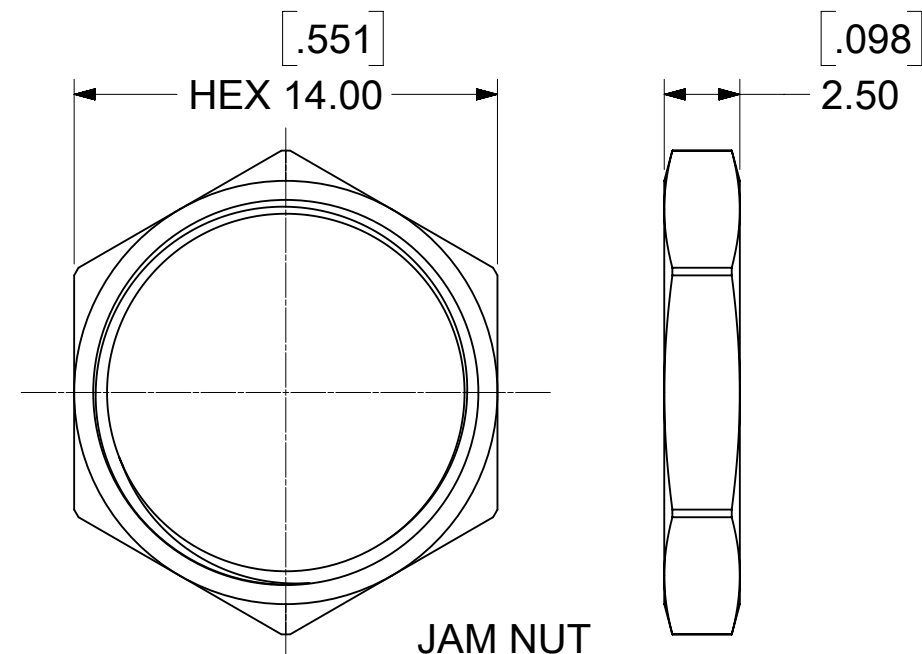
INSULATOR: TEFLON

GASKET: SILICONE RUBBER

LOCK WASHER: PHOSPHOR BRONZE
PLATED: NICKEL (10 MICROINCHES MIN)

ELECTRICAL PERFORMANCE:

1.30 VSWR MAX THROUGH 6 GHz
0.25 dB MAX INSERTION LOSS THRU 6 GHz



PANEL CUT-OUT
MAX THICKNESS
.180/4.57

RECOMMENDED PCB LAYOUT

73216-2241	ONE PER BAG	BAG
73216-2240	TRAY	
PART NO.	TNC JACK	HARDWARE
	PACKAGING	

REV	DATE	DESCRIPTION
C4	2017/7/12	UPDATE PACKAGING PER EWR #11132-A
C3	2015/8/20	ADD 9.5mm DIM AND PLATING THICKNESS
C2	2012/3/6	ADD HARDWARE PACKAGING
C1	2012/1/31	ADD -2241
C	2010/4/21	UPDATE VIEW
B1	2010/2/8	ADD LOCTITE REQUIREMENT
B	2010/1/27	ADD GASKET DESCRIPTION
A	2009/7/27	NEW RELEASE PER EWR-4151

QUALITY SYMBOLS	THIS DRAWING CONTAINS INFORMATION THAT IS PROPRIETARY TO MOLEX ELECTRONIC TECHNOLOGIES, LLC AND SHOULD NOT BE USED WITHOUT WRITTEN PERMISSION		
▽ = 0	2017/07/12 2017/07/17	GENERAL TOLERANCES (UNLESS SPECIFIED)	
▽ = 0		ANGULAR TOL ± 2.0 °	
▽ = 0	EC NO: 119284 DRWN: RYEH CHKD: YCHENG	DIMENSION UNITS	
▽ = 0		SCALE	
▽ = 0	C4	HYBRID	
▽ = 0		NTS	
▽ = 0	C4	DRWN BY	
▽ = 0		DATE	
▽ = 0	C4	AROBERTSON	
▽ = 0		2009/07/27	
▽ = 0	C4	CHKD BY	
▽ = 0		DATE	
▽ = 0	C4	SSS	
▽ = 0		2009/07/27	
▽ = 0	C4	APPR BY	
▽ = 0		DATE	
▽ = 0	C4	JWIENER	
▽ = 0		2009/07/27	
▽ = 0	C4	DRAWING SIZE	
▽ = 0		THIRD ANGLE PROJECTION	
▽ = 0	C4	DRAFT WHERE APPLICABLE MUST REMAIN WITHIN DIMENSIONS	
▽ = 0		C	
		TNC JACK RA BULKHEAD IP68 PCB TH TNC-J/PCB, EWR-4151	
		PRODUCT CUSTOMER DRAWING	
		SERIES	CUSTOMER
		73216	GENERAL MARKET
		DOCUMENT NUMBER	DOC TYPE
		SD-73216-224	PSD
		DOC PART	SHEET NUMBER
		001	1 OF 1