

NOTES:

1. MATERIALS AND FINISHES:

- BODY - BERYLLIUM COPPER, GOLD PLATING
- REAR BODY - BRASS, GOLD PLATING
- CONTACT - BERYLLIUM COPPER, GOLD PLATING
- CAP - PHOSPHOR BRONZE, NICKEL PLATING
- INSULATOR - PTFE, NATURAL

2. ELECTRICAL:

- A. IMPEDANCE: 50 OHM
- B. FREQUENCY RANGE: DC-26.5 GHz
- C. VSWR(RETURN LOSS): 1.08 (28.3 dB) MAX. @ DC - 3 GHz  
1.20 (21.0 dB) MAX. @ 3 - 26.5 GHz

3. MECHANICAL:

- A. DURABILITY: 100 CYCLES MIN. MATED WITH FULL DETENT JACK  
500 CYCLES MIN. MATED WITH LIMITED DETENT JACK  
1000 CYCLES MIN. MATED WITH SMOOTH BORE JACK
- B. TEMPERATURE RANGE: -65°C TO +165°C

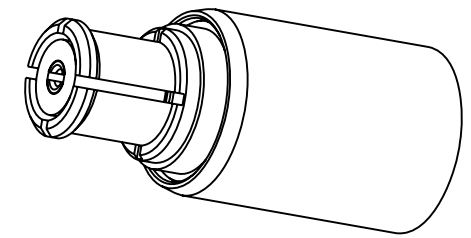
4. PACKAGING:

- A. QUANTITY: SINGLE PACK
- B. MARKING: PACKAGING TO BE MARKED  
"AMPHENOL RF, SMP-FS-T2, DATE CODE"

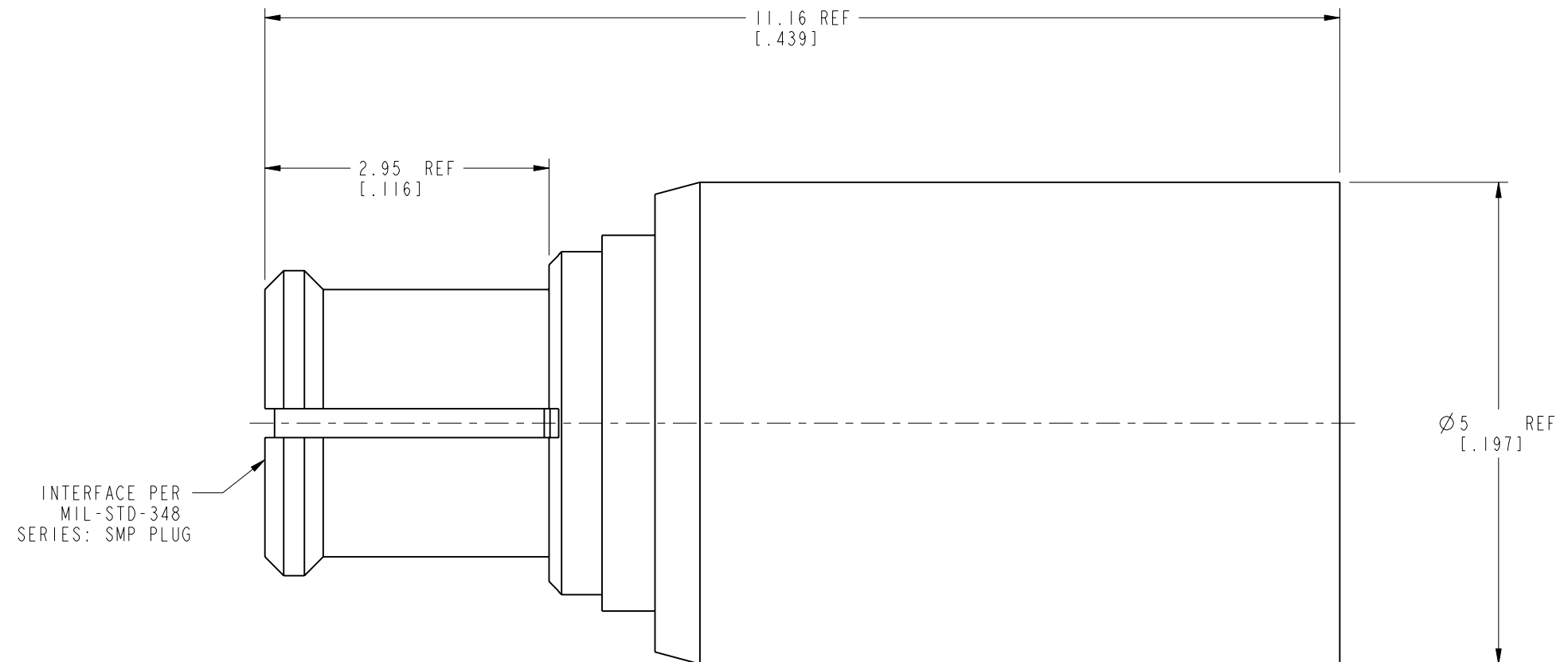
THIRD ANGLE PROJ.

REVISIONS

REV	DESCRIPTION	DATE	ECN	APPR
A	RELEASE TO MFG.	17-Jan-20	14221	EH



SCALE 5.000



**CUSTOMER OUTLINE DRAWING**

ALL OTHER SHEETS ARE FOR INTERNAL USE ONLY

UNLESS OTHERWISE SPECIFIED, DIMENSIONS ARE IN METRIC AND TOLERANCES ARE: <0.5mm ±0.05mm    0.5 - 6mm ±0.1mm    6 - 30mm ±0.2mm    30 - 120mm ±0.3mm    ANGLES ±1°	MATERIAL	DRAWN	DATE	TITLE SMP PLUG 2 WATT TERMINATION		Amphenol RF www.amphenolrf.com	
	SEE NOTES	WIKI	26-Feb-20				
NOTICE - These drawings, specifications, or other data (1) are, and remain the property of Amphenol corp. (2) must be returned upon request; and (3) are confidential and not to be disclosed to any person other than those to whom they are given by Amphenol Corp. the furnishing of these drawings, specifications, or other data by Amphenol Corp., or to any other person to anyone for any purpose is not to be regarded by implication or otherwise in any manner licensing, granting rights to permitting such holder or any other person to manufacture, use or sell any product, process or design, patented or otherwise, that may in any way be related to or disclosed by said drawings, specifications, or other data.	REFERENCE	ENGINEER	DATE	SCALE: 16.0:1.0 SHEET 2 OF 2		DRAWING NO. SMP-FS-T2	
	EAR# 9238	STAR	26-Feb-20			ITEM NO. SMP-FS-T2	
	REF: ---	APPROVED	S. HSIEH	DATE	DWG SIZE B	REV A	PART NO. SMP-FS-T2
	CONFIGURATION LEVEL: In Work	CAD FILE	3-Mar-20				
FINISH							