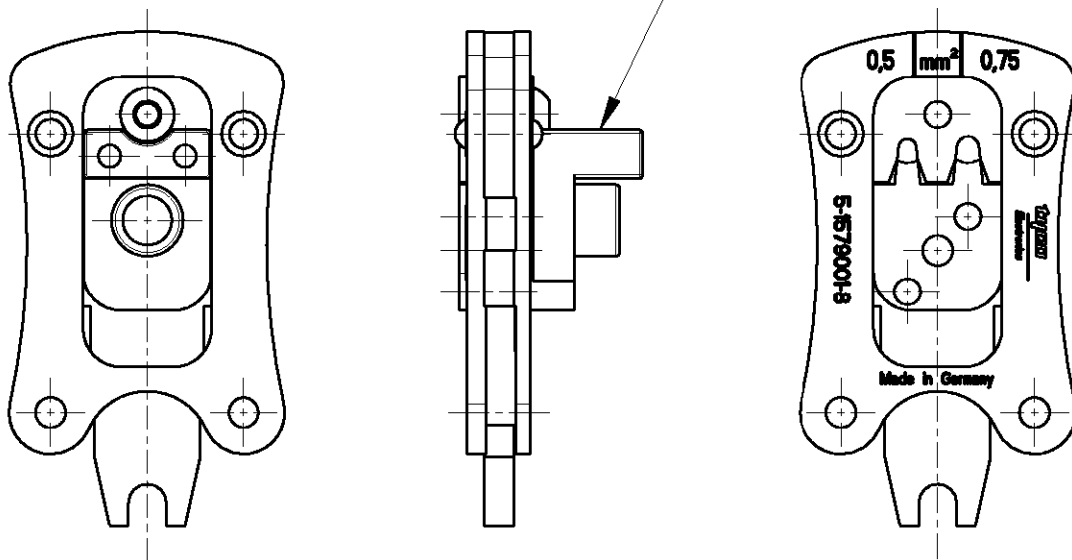


LOC	DIST	REVISIONS					
A1	-	P	LTR	DESCRIPTION	DATE	DWN	APVD
		A1	ECR-11-013843		04JUL11	LS	LB

CRIMP HEAD FOR MQS TERMINALS 0,5 and 0,75 mm<sup>2</sup> (SWS)  
Crimpkopf fuer MQS-Kontakte 0,5 and 0,75 mm<sup>2</sup> (EDS)

KontaktLocator unter PN 9-1579005-3  
als Ersatzteil erhaeltlich  
Terminal locator PN 9-1579005-3  
as spare part available



Kontakt	DGB (mm <sup>2</sup> )	Drahtcrimp / Wire Crimp		Isolationcrimp / Insulationcrimp		Isol.Ø	Betriebsanl.
Contact	Wire Range	Hoehe/Height mm	Breite/Width mm	Hoehe/Height mm	Breite/Width mm	Ins.Range	Instr.Sheet
965907/965909	0.50	0.93 ±0,03	1,40	2,90	2,90 0	1,4-1,6	411-18297
	0.75	1.07 ±0,03				1,7-1,9	

Crimphhead used in combination with handles CSV10 Vario short. PN 2-1579005-1  
Crimpkopf in Kombination mit Griff CSV10 Vario kurz. PN 2-1579005-1 verwenden

Processing of terminals according to application specification 114-18025  
Verarbeitung der Kontakte nach Verarbeitungsspezifikation 114-18025


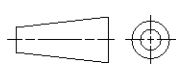
2005

RELEASED FOR PUBLICATION

THIS DRAWING IS UNPUBLISHED.

BY TYCO ELECTRONICS CORPORATION. ALL RIGHTS RESERVED.

© COPYRIGHT 2005

DIMENSIONS: mm	DWN	14NOV2006	MATERIAL	-	FINISH	-
	Ch.Witt	-	CHK	-	APVD	-
TOLERANCES UNLESS OTHERWISE SPECIFIED:	PRODUCT SPEC	-	 TE Connectivity			
	APPLICATION SPEC	-				
0 PLC ±	NAME	CRIMP HEAD CSV10, MQS 0.5-0.75SQ.MM				
1 PLC ±	SIZE	A 4	CAGE CODE	00779	DRAWING NO	©=5-1579001-8
2 PLC ±	RESTRICTED TO	-				
3 PLC ±	WEIGHT	95 g	-			
4 PLC ±	CUSTOMER DRAWING	-				
ANGLES ±°	SCALE	1:1	SHEET	1	OF	1
	REV	A1				