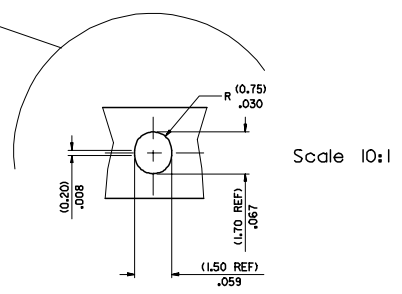
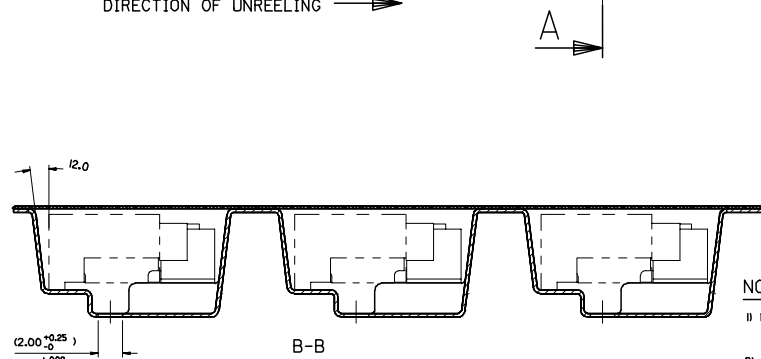


DIRECTION OF UNREELING →



REFERENCE ONLY

99044-4006

(360.0) MAX 14.17

(100.0) REF 3.94

(50.4) MAX 1.98

(3.00 ± 0.25) .12 ± 0.009

(44.40 ± 0.20) 1.748 ± 0.005

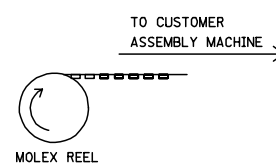
REEL DIMENSIONS

NOT TO SCALE

(500) PIECES ON A REEL

(THREE) REELS / CARDBOARD BOX (96707-0007)

(1500) PIECES IN THE CARDBOARD BOX



- NOTES:**
- MATERIAL :
CARRIER TAPE : VOLUME CONDUCTIVE POLYCARBONATE , (0.37) .014 REF THICK , BLACK
COVER TAPE : COLD SEAL POLYESTER , (0.06) .002 REF THICK , TRANSPARENT
 - PITCH TOLERANCE OVER ANY 10 PITCHES ±(0.2) .008
 - PEEL FORCE OF THE COVER TAPE IS 0.1N TO 1.0N
AT A MAXIMUM PEEL SPEED OF (300) 1.8mm/min ±10%
 - REFERENCE TO IEC 286-3 EXCEPT WHERE SPECIFIED

COMPONENT	DESCRIPTION
90811-2001	MOBILE PHONE I/O CONNECTOR

UPDATED SHEET 3 ECLANG E2007-0458 2007/05/10 DRIVING DUGGAN 2007/05/10 CHKD. APPREHOLAN 2007/05/10 APPROVED	QUALITY SYMBOLS	GENERAL TOLERANCES (UNLESS SPECIFIED)	DIMENSION STYLE	SCALE	DESIGN UNITS	THIRD ANGLE PROJECTION
	4 PLACES ± --- ± --- 3 PLACES ± --- ± --- 2 PLACES ± 0.10 ± --- 1 PLACE ± 0.2 ± --- ANGULAR ± 5°	MM/IN	S1	METRIC	DRAWN BY TM 1996/05/10 DATE CHECKED BY MW 1996/05/10 DATE APPROVED BY MW 1996/05/10 DATE	BLISTER PACKAGING FOR MOBILE PHONE HANDSET
DRAFT WHERE APPLICABLE MUST REMAIN WITHIN DIMENSIONS		SEE CHART		MOLEX INCORPORATED SDA-90811-9001		SHEET NO. 1 OF 3