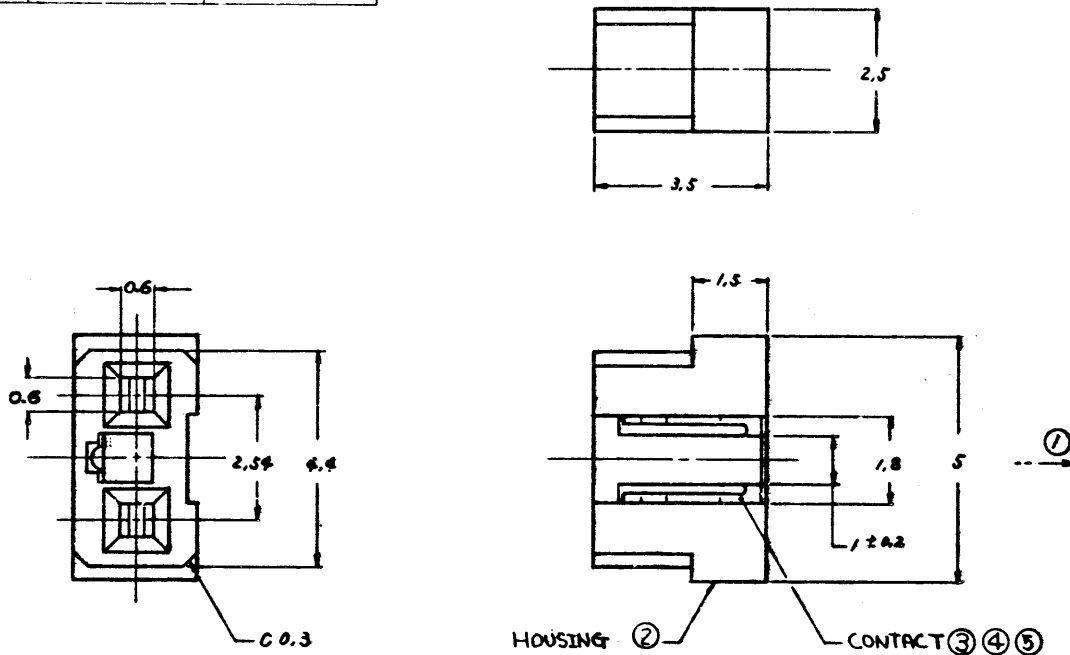


P/N	FINISH	RECOMMENDED HEADER P/N	HOUSING COLOR
68905-001	SEE NOTE ③	68907-010 68908-020	NATURAL
68905-002	SEE NOTE ④	68907-110 68908-120	NATURAL
68905-101	SEE NOTE ③	68907-010 68908-020	BLACK
68905-102	SEE NOTE ④	68907-110 68908-120	BLACK
68905-201	SEE NOTE ③	68907-010 68908-020	RED
68905-301	SEE NOTE ⑤	68908-320	BLACK

REVISIONS			
REV	DESCRIPTION	BY	DATE
A	PREPARED (TJFK R.W.C)	HE	8/21
B	REVISED PER ECR # J8412	HE	8/21
C	REVISED PER ECR # 352	F.K	10/21
D	REVISED PER ECR # J8416	F.K	8/10



- NOTES
- CONTACT RETENTION FORCE AGAINST THIS DIRECTION 0.8 kg MIN.
 - HOUSING MATERIAL: 66 NYLON UL94V-0 COLOR: SEE TABLE.
 - CONTACT MATERIAL: PHOSPHOR BRONZE FINISH: SELECTIVE GOLD PLATING 0.1um THK. MIN UNDER PLATING Ni 1.2um THK. MIN.
 - CONTACT MATERIAL: PHOSPHOR BRONZE (PRE-TIN-LEAD PLATED) FINISH: TIN-LEAD PLATING 1um THK. MIN WITHOUT UNDER PLATING.
 - CONTACT MATERIAL: PHOSPHOR BRONZE FINISH: SELECTIVE GOLD PLATING 0.76um THK. MIN UNDER PLATING Ni 1.2um THK. MIN.

CUSTOMER COPY FOR REFERENCE ONLY

		DO NOT SCALE DRAWING	TOLERANCES UNLESS OTHERWISE NOTED	INCH	MM	DR H. [Signature]	MATL SEE NOTES	DATE 5/24/89
			LINEAR	±0.01	±0.25	CK'D [Signature]	② ③ ④	5/24/89
NEXT ASSY	USED ON	THIRD ANGLE PROJECTION	RADI		±0.25	ENGR [Signature]	FINISH SEE TABLE	5/24/89
APPLICATION			ANGLES		±2°	APP'D [Signature]		5/24/89

DuPont Electronics

TITLE LU JUMP CONNECTOR

SCALE SIZE DWG. NO. B 68905 SHEET / OF /

NOTE: This print is the property of and embodies proprietary designs of Berg Electronics. No part of the design shown on this print may be used in any way without the written consent of Berg Electronics, New Cumberland, Pa.