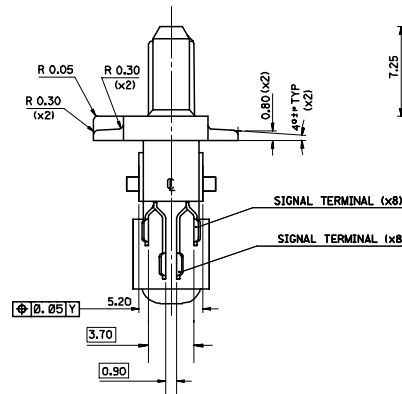
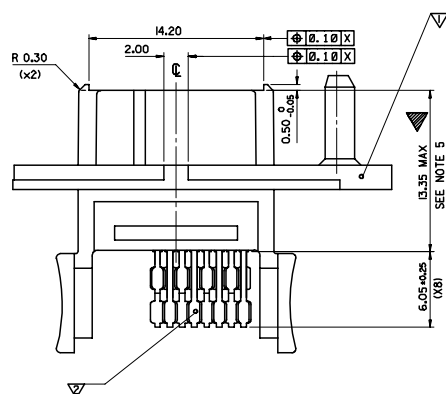
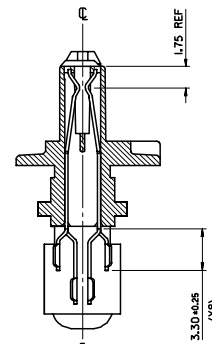
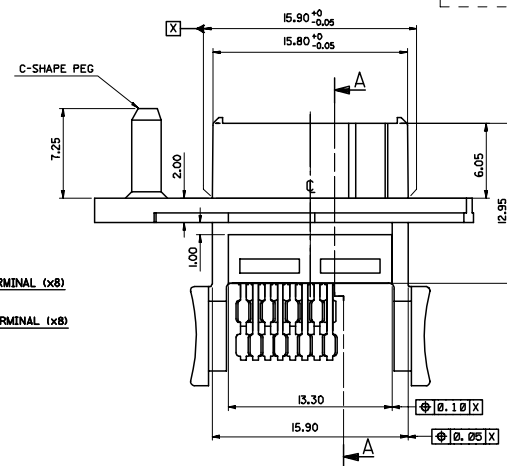


91229-1006
91229-1007



PARTIAL VIEW
FRONT BUTTON OMITTED FOR CLARITY

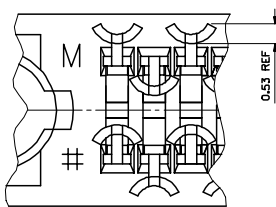
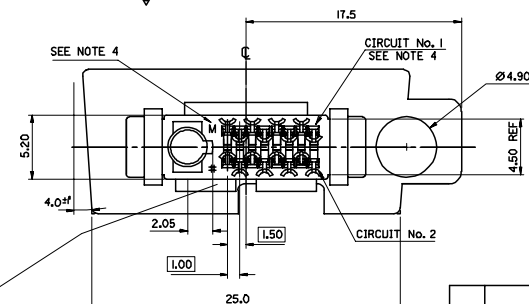


A-A

NOTES:

1. CIRCUIT NUMBERS IDENTIFIED FOR MEASUREMENT PURPOSES
2. 0.25° DRAFT ANGLE ALLOWED ON ALL FACES
UNLESS OTHERWISE STATED
3. UNSPECIFIED RADII TO BE 0.20mm MAX
4. MOLEX I.D. AND CAVITY NO. LO HIGH/RAISED 0.1 WHERE SHOWN
5. SEE PRODUCT SPECIFICATION NO. PS-99020-0086
6. RF KIT NO. 90853-0001. SEE SDA-90853.

ASSEMBLY NO.	HOUSING PART NO.	RF CORING CONFIG	C-SHAPE PEG	INCLUDING RF KIT	
91229-1004	91229-0001	RF	YES	YES	SEE NOTE 6
91229-1005	91229-0002	VOID	YES	NO	
91229-1006	91229-0003	VOID	NO	NO	
91229-1007	91229-0003	RF	NO	YES	SEE NOTE 6



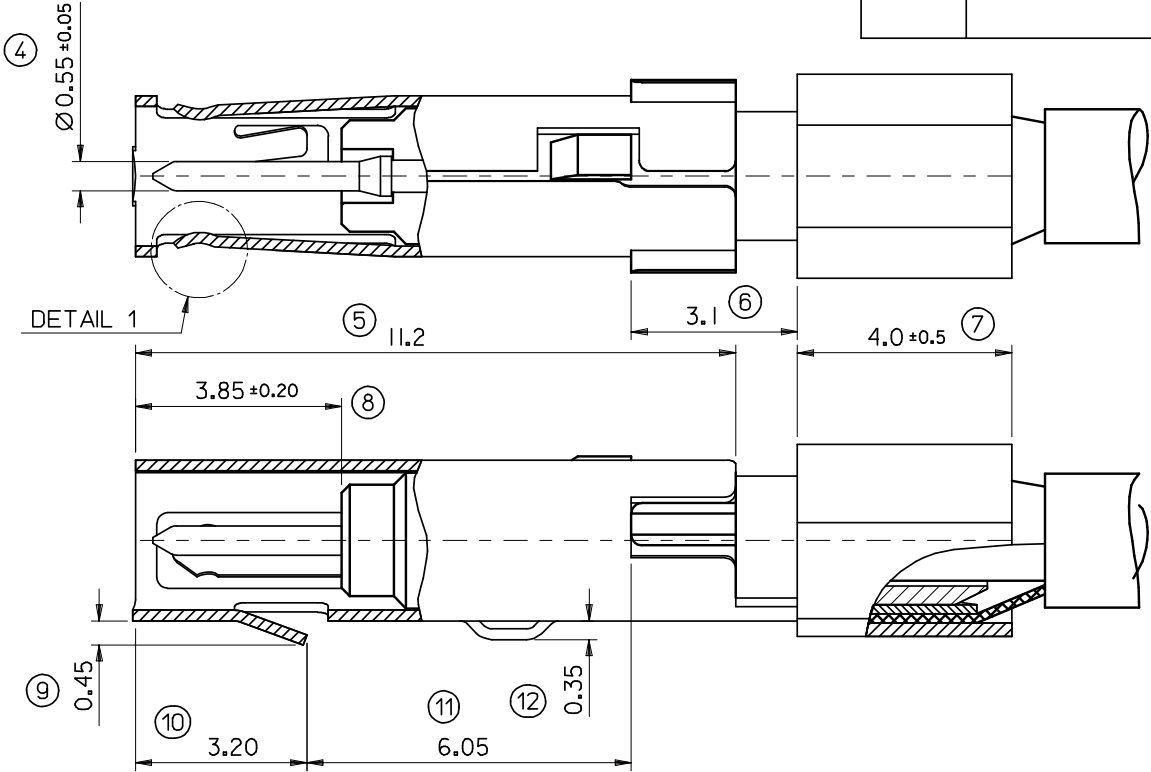
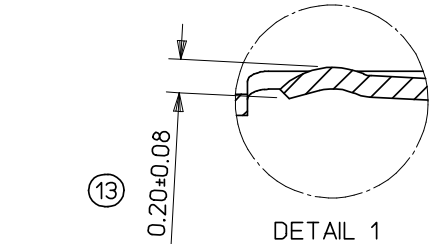
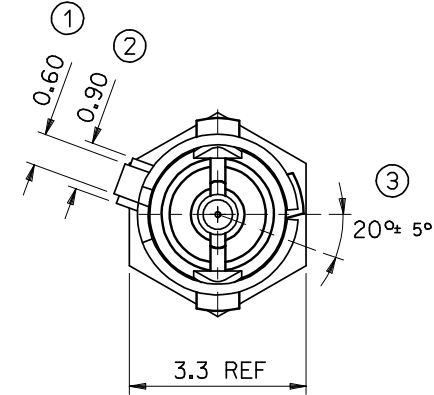
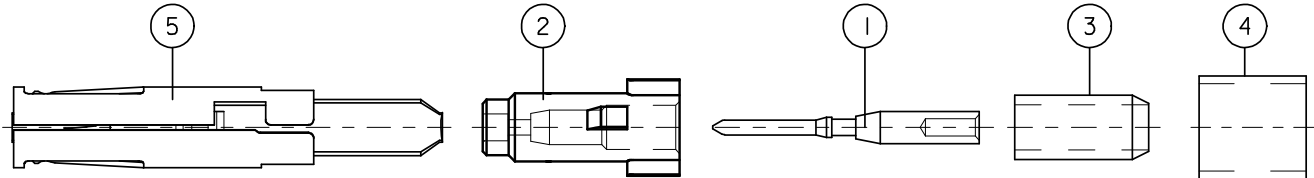
SOLDER CUP DETAIL
SCALE 15:1

COMPONENT		DESCRIPTION
1	HOUSING	POLYAMIDE (PA46) 45% GLASS FILL, UL94
2	SIGNALS	MATERIAL: 0.25mm PHOSPHOR BRONZE PLATING: 0.10um MIN. GOLD FLASH ON 1.0um MIN. PALLADIUM NICKEL, WITH 1.27-2.50um NICKEL UNDERPLATE 3-5um TIN MIN. IN SOLDER CUP AREA
3	RF KIT	BRASS, PLATING: NICKEL ALL OVER PC BRASS, PLATING: Sn OVER NICKEL BRASS, PLATING: Sn OVER NICKEL PHOSPHOR BRONZE, PLATING: NICKEL UNDERPLATE ALLOY, Au FLASH OVER PALLADIUM NICKEL IN THE CONTACT AREA, TIN IN THE CRIMP ZONE

MODIFY MATERIAL EEC NO: E2005-0361 DRWGNO: 2005/08/10 CHKCD: 2005/08/10 APPR: EFO-LAN 2005/08/19	QUALITY SYMBOLS	GENERAL TOLERANCES (UNLESS SPECIFIED)		DIMENSION STYLE IN/MM		SCALE 1:1	DESIGN UNITS INCH	FIRST ANGLE PROJECTION
	▼=Z ▽=D	mm	INCH	DRAWN BY CT08IN	DATE 99/06/09	TITLE SYSTEM CONNECTOR CRADLE HOUSING SUB ASSEMBLY		
		4 PLACES ± .005 ± .005		CHECKED BY DUGGAN	DATE 99/06/09			
		3 PLACES ± .005 ± .005		APPROVED BY	DATE			
		2 PLACES ± .010 ± .010		EFO-LAN	99/06/09			
		ANGULAR ± 2°		MATERIAL NO. SEE CHART		DOCUMENT NO. SD-91229-001		SHEET NO. 1 OF 1
		DRAFT WHERE APPLICABLE MUST REMAIN WITHIN DIMENSIONS		THIS DRAWING CONTAINS INFORMATION THAT IS PROPRIETARY TO MOLEX CORPORATION. IT IS NOT TO BE REPRODUCED OR USED IN ANY MANNER WITHOUT THE EXPRESS WRITTEN PERMISSION OF MOLEX CORPORATION.				

PARTS LIST		
ITEM	DESCRIPTION	MATERIAL/FINISH
1	CENTRE PIN	BRASS, Au OVER Ni
2	DIELECTRIC	PC
3	INNER FERRULE	BRASS, Sn OVER Cu
4	OUTER FERRULE	BRASS, Sn OVER Cu
5	SHIELD	PHOSPHOR BRONZE, Ni UNDERPLATE ALLOVER, Au FLASH OVER PdNi IN THE CONTACT ZONE, Sn IN THE CRIMP ZONE

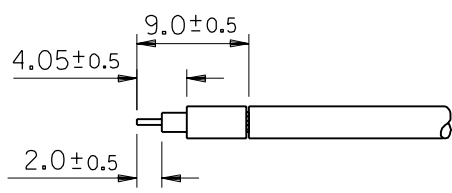
APPLICATION INFORMATION



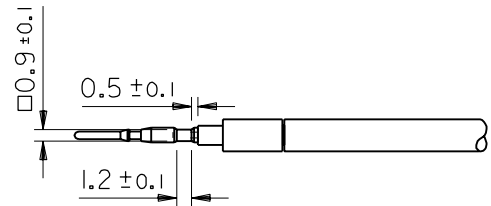
NOTES:
1. PARTS ARE SUPPLIED BULK PACKAGED.
2. SEE SHEET 2 FOR ASSEMBLY INSTRUCTIONS.
LAST INSPECTION No: 13

ADDED DETAIL 1 EC NO: E2008-0262 DRWN:DCARTON CHKD: APPR:BMAGUIRE REV	2008/03/20 2008/03/20 2008/03/20	DESCRIPTION	QUALITY SYMBOLS <div>▽=0</div> <div>▽C=0</div>	GENERAL TOLERANCES (UNLESS SPECIFIED)		DIMENSION STYLE MM ONLY		SCALE 10:1	DESIGN UNITS METRIC	<div>THIRD ANGLE PROJECTION</div>	RF PLUG KIT FOR RG174 CABLE				
					mm	INCH	DRAWN BY FM		DATE 1997/04/09				TITLE MOLEX INCORPORATED		
				4 PLACES	± ---	± ---	CHECKED BY		DATE 1997/04/09						
				3 PLACES	± ---	± ---	APPROVED BY		DATE 1997/04/09						
				2 PLACES	± 0.10	± ---	MATERIAL NO. 90853 0001		DOCUMENT NO. SDA-90853						SHEET NO. 1 OF 2
				1 PLACE	± 0.20	± ---	ANGULAR ± 2 °		THIS DRAWING CONTAINS INFORMATION THAT IS PROPRIETARY TO MOLEX INCORPORATED AND SHOULD NOT BE USED WITHOUT WRITTEN PERMISSION						
				DRAFT WHERE APPLICABLE MUST REMAIN WITHIN DIMENSIONS				SIZE A3							

E



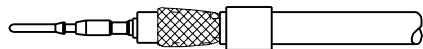
1. STRIP CO-AX CABLE. DO NOT REMOVE JACKET.



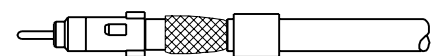
2. ASSEMBLE PIN TO BE FLUSH WITH THE CO-AX DIELECTRIC. CRIMP PIN TO CENTRE CONDUCTOR TO THE 0.9 DIMENSION SHOWN.



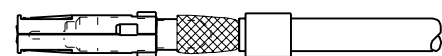
3. SLIDE OUTER FERRULE OVER PIN AND CABLE, THEN REMOVE JACKET.



4. SLIDE INNER FERRULE OVER PIN AND UNDER BRAID.



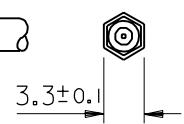
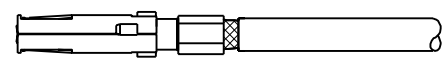
5. SLIDE DIELECTRIC OVER PIN UNTIL IT LATCHES INTO POSITION.



6. SLIDE SHELL OVER DIELECTRIC UNTIL IT LATCHES INTO POSITION.

C

B



7. SLIDE OUTER FERRULE INTO POSITION AND CRIMP ONTO THE CABLE.

A

FOR PREVIOUS DRAWING ISSUES SEE MRI.

A I SEE SHEET 1.

REVISIONS

DIMENSIONS SHOWN (METRIC) INCH			
UNLESS OTHERWISE SPECIFIED TOLERANCES: ANGULAR $\pm \frac{1}{2}$			
		INCH	(METRIC)
3 PLACE	\pm	.	
2 PLACE	\pm	.	\pm
1 PLACE			\pm
DRAFT WHERE APPLICABLE MUST REMAIN WITHIN DIMENSIONS			
DESIGN DIMENSION		<input checked="" type="checkbox"/> (MM)	
(PRIMARY)		<input type="checkbox"/> IN.	
EQUIVALENT DIMENSION		<input type="checkbox"/> (MM)	
(SECONDARY)		<input type="checkbox"/> IN.	

DRWG BY
FM
CHK'D BY
APP'D BY
SCALE
2:1

REVISE ONLY ON CAD SYSTEM		SH.	REV.
CAD/CAM FILENAME S90853X2 DGN	THIS DRAWING CONTAINS INFORMATION THAT IS PROPRIETARY TO MOLEX INC. & SHOULD NOT BE USED WITHOUT WRITTEN PERMISSION		
TITLE RF PLUG KIT TERMINATION INSTRUCTIONS FOR RG174 CABLE			
MOLEX EUROPE		SHEET NO. 20F	DATE 97/04/09
PART NO. 90853-0001	DWG NO. SDA-90853		SIZE A

E

D

C

B

A

7

6

5

4

3

2

1